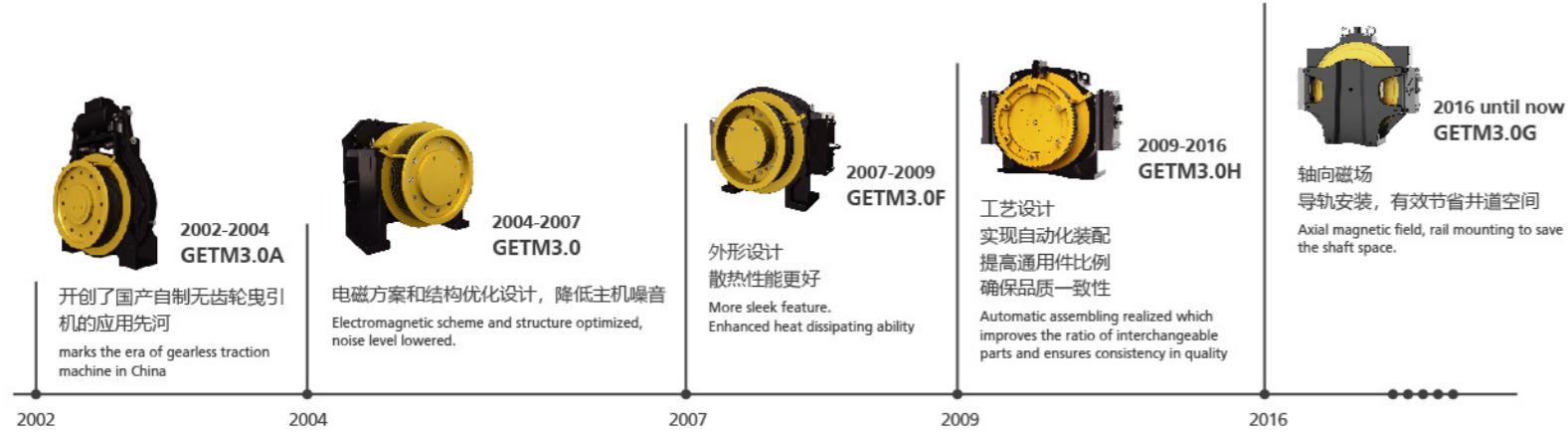
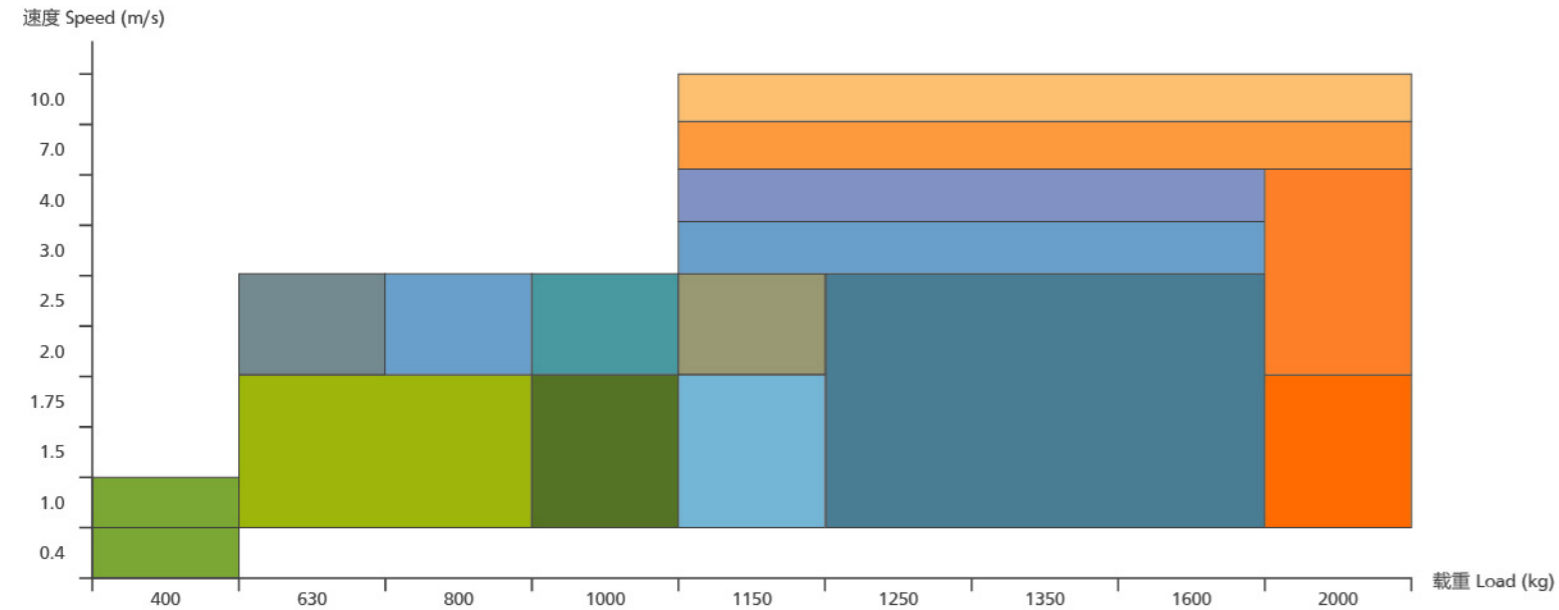


## 曳引机发展史 Development History of Traction Machine



## 产品系列 Products Series



主机左右置定义:

人面对曳引轮, 轮子逆时针旋转, 轿厢上行, 则为右置; 人面对曳引轮, 轮子顺时针旋转, 轿厢上行, 则为左置。

Definition of Machine Position:

Right: Facing the traction sheave, the car ascends when the sheave rotates in counterclockwise direction.

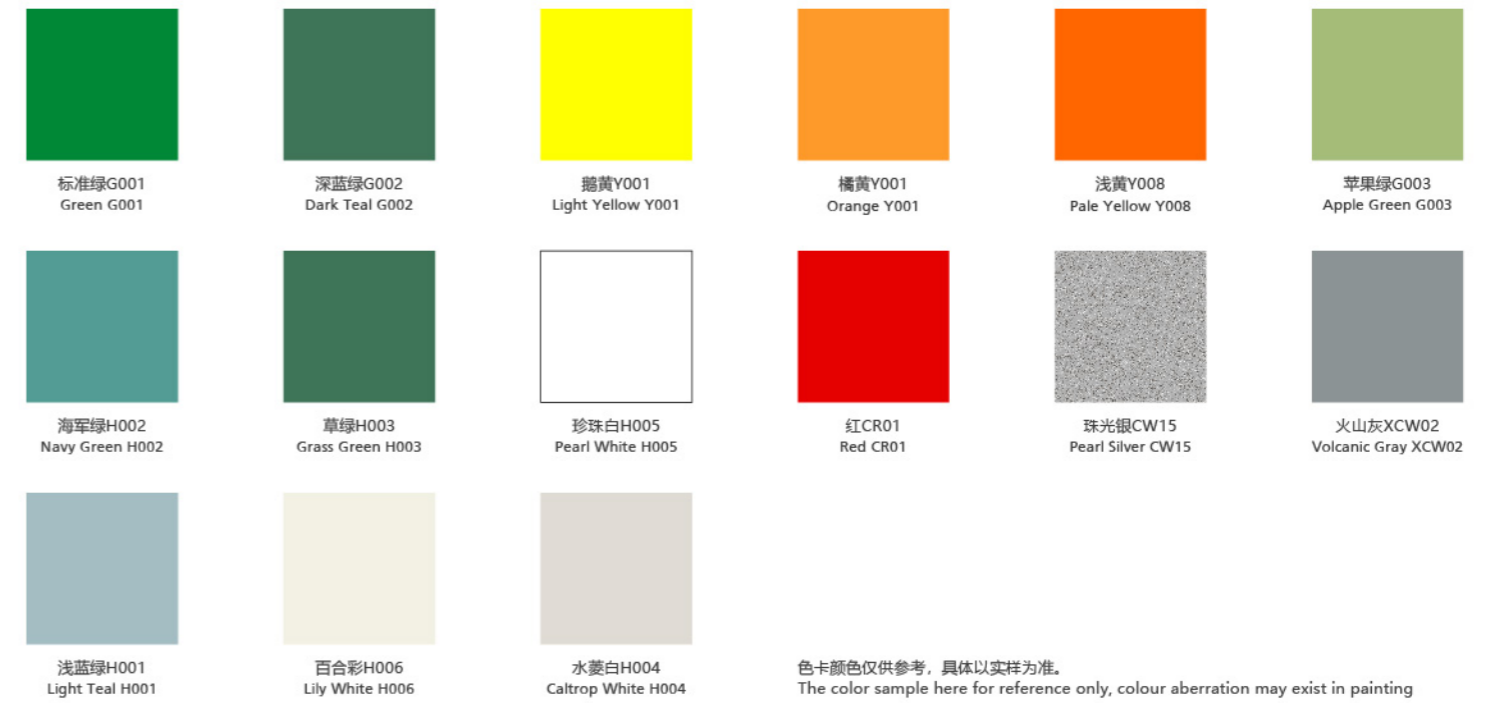
Left: Facing the traction sheave, the car ascends when the sheave rotates in clockwise direction.

## 色卡 Color Code

### 标准颜色 Standard Color



### 常用喷涂色卡 Oft-Used Color



### 备注

机房内的环境空气温度应保持在5°C-40°C; 环境相对湿度最湿月月平均应不大于90%, 同时该月月平均最低温度应不高于25°C; 超出范围请咨询

客户需根据实际情况计算曳引能力和安全系数是否满足标准要求, 曳引轮β、γ角度可非标

在应用前已确认变频器与编码器的匹配性

曳引轮β、γ角度可非标

曳引机的推荐提升高度为电梯在额定速度45秒的运行距离。例如1m/s的曳引机, 推荐提升高度为45m

样本资料仅供参考。本产品在改进的同时, 资料可能有所变化, 恕不另行通知



## 常规客梯主机系列 For General Elevators

该系列主机经过先进的工业和工艺设计，实现了模块化和标准化，可灵活实现制动器与曳引轮间多达三种以上的自由配置组合，通用部件比例得到提高，使用范围广泛，可满足客户不同需求。专业化的技术和标准化的流程完全保证了大批量产品自动化生产和个性化定制的完美结合。

For this series of traction machine, standardization and modularization is realized through advanced industrial and technical design. Interchangeability of parts is greatly improved; there are more than 3 possible combinations by replacing brakes and traction sheave, thus diversified customer needs can be met. Our professionalism and standardized process guarantees the tailor-made production in large scales.



自制稀土材料NdFeB高性能磁钢，用专利配合和先进的制造工艺，确保磁钢性能的一致性和稳定性  
In-house made high-performance NdFeB magnet is adopted.

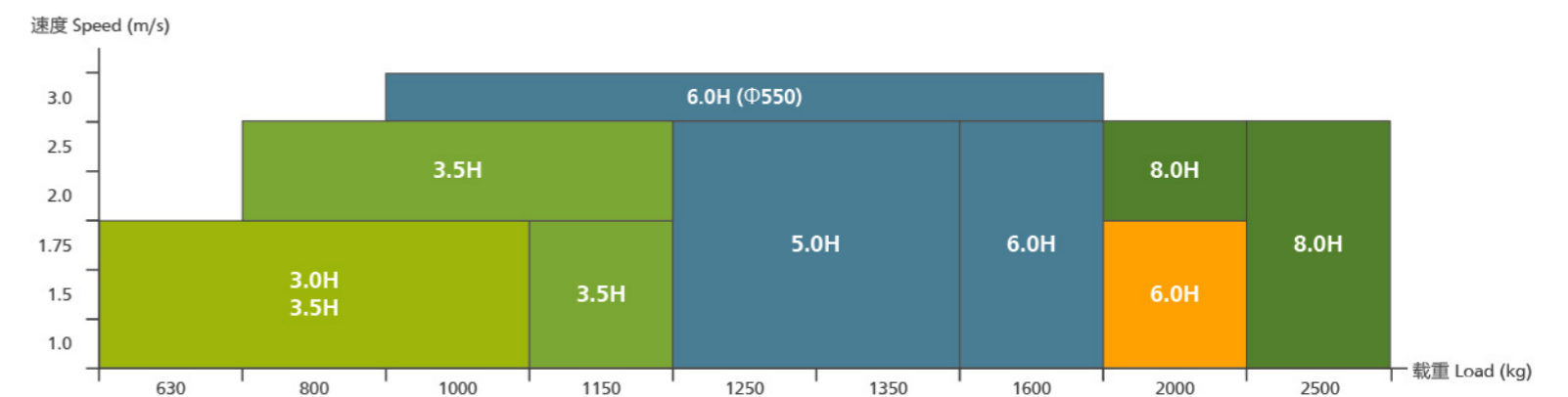


磁钢采用双层固定方式且配有进口电机过热保护装置，保证电机安全可靠的运行  
The magnets are double fixed and imported thermal switches are furnished, all of which ensure the reliability of the machine performance.

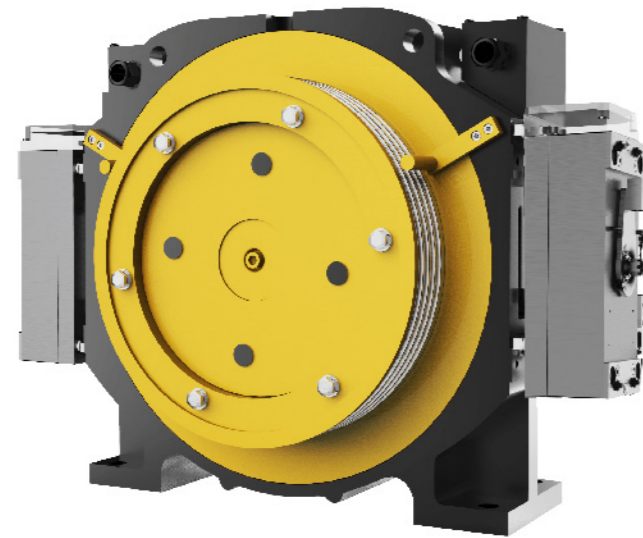


独特转动轴外转子结构，确保主机运行平稳，噪音低  
Unique rotating shaft and external rotor construction brings smooth operation of the machine and low noise level.

### 产品系列 Products Series



# GETM3.0H (630kg)



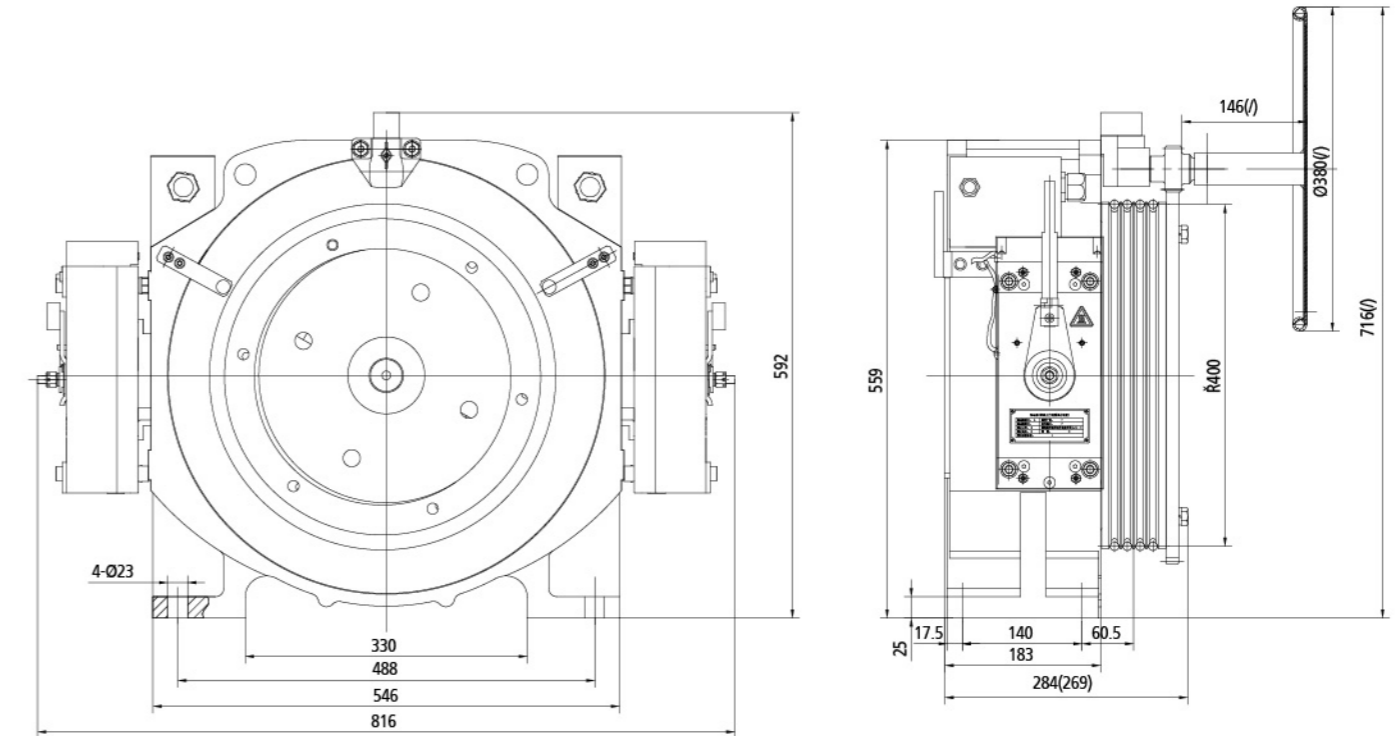
许用径向载荷 Max. axle load	2000kg
曳引机概算重量 Motor weight	308kg
工作制 Working duty	S5-40%ED
绝缘等级 Ins. class	155(F)
制动器型号及数量 Brake type	2只DZD1-500

## 规格表 Specification table

型号 Product type	曳引比 Traction Ratio	额定 载重 Load (kg)	电梯 额定速度 Elevator Speed (m/s)	额定转速 Rated speed (r/min)	额定转矩 Rated torque (N.m)	电机 Motor					制动器 Brake			曳引轮 Sheave				
						功率 Power (kW)	电压 Voltage (V)	电流 Current (A)	极对数 Poles (p)	频率 Frequency (Hz)	电流 Current (A)	电压 Voltage (V)	制动力矩 Brake torque (N.m)	节径 Diameter (mm)	绳槽 Rope rxd	β角 β angle	γ角 γ angle	槽距 Groove pitch (mm)
GETM3.0H-100/0630	2:1	630	1.0	95.5	412	4.1	340	10.0	16	25.4	2x1.2	DC110	2x515	400	4xø10	96°	35°	15
GETM3.0H-150/0630			1.5	143	412	6.2		14.0		38.2					4xø10			15
GETM3.0H-175/0630			1.75	167	412	7.2		16.5		44.5					4xø10			15

注: 1. 以上信息仅供参考, 具体参数请以ODF表为准; 2. 绳槽数量、β角、γ角可根据客户系统进行非标; 3. 极数=2倍极对数。  
Note: 1. Above parameters for information only, final parameters shall be as per ODF. 2. Quantity of rope groove number, β angle and γ angle can be tailor-made according to customer's requests.

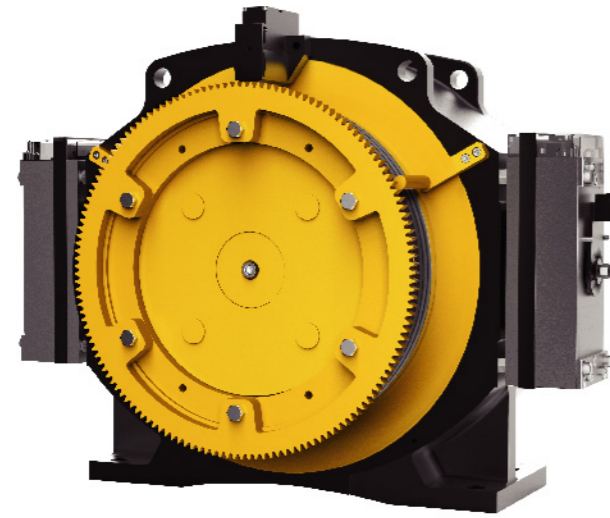
## 外形尺寸图 Overall Dimensions



- 注: 1. 本机分为有盘车和无盘车两种状态;  
2. 括号里数值表示无盘车时尺寸;  
3. 可配备远程松闸装置, 松闸线长4~10米。

- Remarks:  
1. Both hand wind and hand wind-less types are available.  
2. The data in the bracket is for the size of hand wind-less type.  
3. Remote release device is available, the length of releasing wire ranges 4~10m.

# GETM3.0H (800~1000kg)



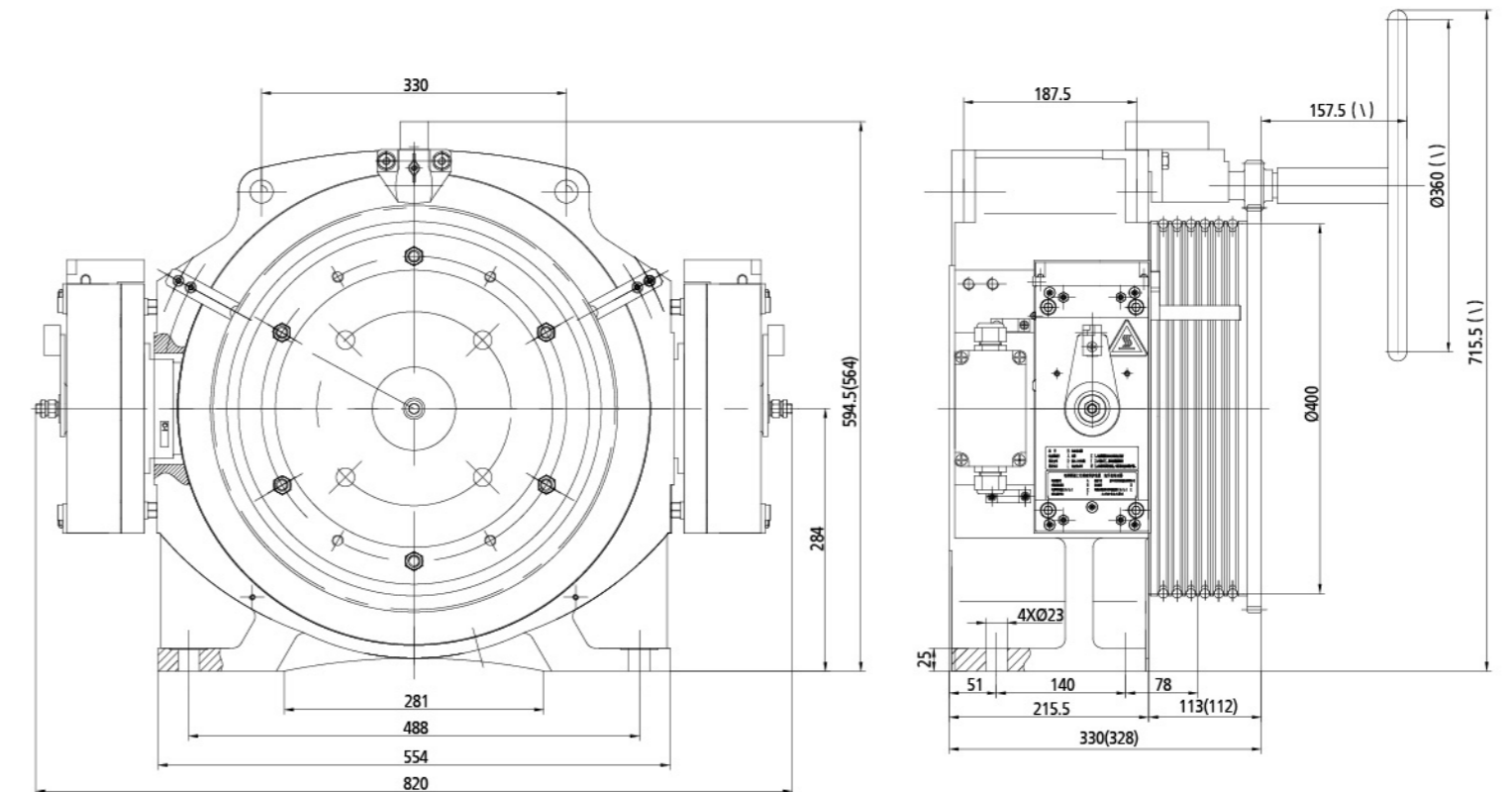
许用径向载荷 Max. axle load	3000kg
曳引机概算重量 Motor weight	373kg
工作制 Working duty	S5-40%ED
绝缘等级 Ins. class	155(F)
制动器型号及数量 Brake type	2只DZD1-500

规格表 Specification table

型号 Product type	曳引比 Traction Ratio	额定载重 Load (kg)	电梯额定速度 Elevator Speed (m/s)	额定转速 Rated speed (r/min)	额定转矩 Rated torque (N.m)	电机 Motor				制动器 Brake			曳引轮 Sheave					
						功率 Power (kW)	电压 Voltage (V)	电流 Current (A)	极对数 Poles (p)	频率 Frequency (Hz)	电流 Current (A)	电压 Voltage (V)	制动力矩 Brake torque (N.m)	节径 Diameter (mm)	绳槽 Rope rtd	β角 β angle	γ角 γ angle	槽距 Groove pitch (mm)
GETM3.0H-100/0800	2:1	800	1.0	95.5	502	5	340	11.5	16	25.4	2x1.34	DC110	2x668	400	5xø10	96°	35°	15
GETM3.0H-150/0800			1.5	143	521	7.8		17		38.2					5xø10			
GETM3.0H-175/0800			1.75	167	514	9		21		44.5					5xø10			
GETM3.0H-100/1000	2:1	1000	1.0	95.5	604	6	340	14	16	25.4	2x1.15	DC110	2x837	400	5xø10	96°	35°	15
GETM3.0H-150/1000			1.5	143	669	10		22.3		38.2					6xø10			
GETM3.0H-175/1000			1.75	167	669	11.7		26		44.5					6xø10			

注: 1. 以上信息仅供参考, 具体参数请以ODF表为准; 2. 绳槽数量、β角、γ角可根据客户系统进行非标; 3. 极数=2倍极对数。  
 Note: 1. Above parameters for information only, final parameters shall be as per ODF. 2. Quantity of rope groove number, β angle and γ angle can be tailor-made according to customer's requests.

外形尺寸图 Overall Dimensions

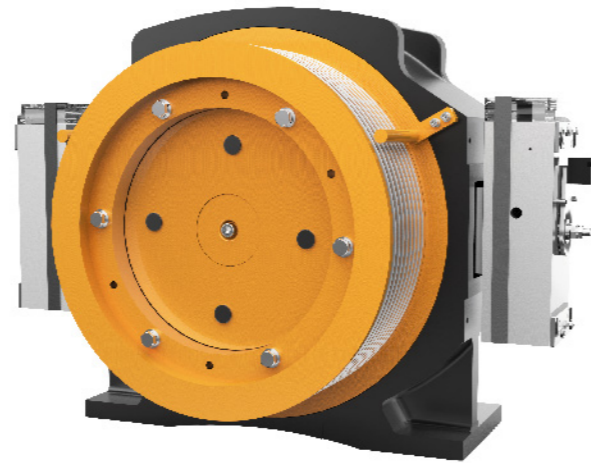


注: 1、本机型分为有盘车和无盘车两种状态;  
 2、括号里数值表示无盘车时尺寸;  
 3、可配备远程松闸装置, 松闸线长4~10米。

Remarks:  
 1. Both hand wind and hand wind-less types are available.  
 2. The data in the bracket is for the size of hand wind-less type.  
 3. Remote release device is available, the length of releasing wire ranges 4~10m.

# GETM3.5H (800~1000kg)

许用径向载荷 Max. axle load	3500kg
曳引机概算重量 Motor weight	385kg
工作制 Working duty	S5-40%ED
绝缘等级 Ins. class	155(F)
制动器型号及数量 Brake type	2只DZD1-500

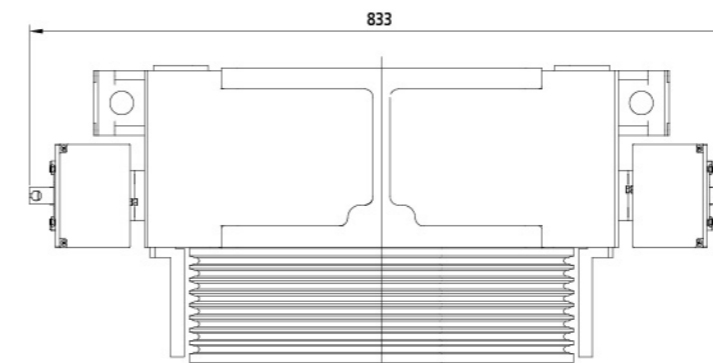
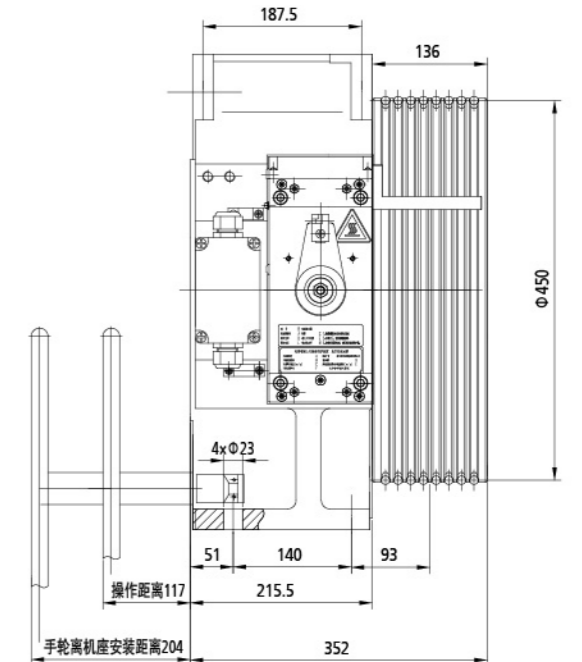
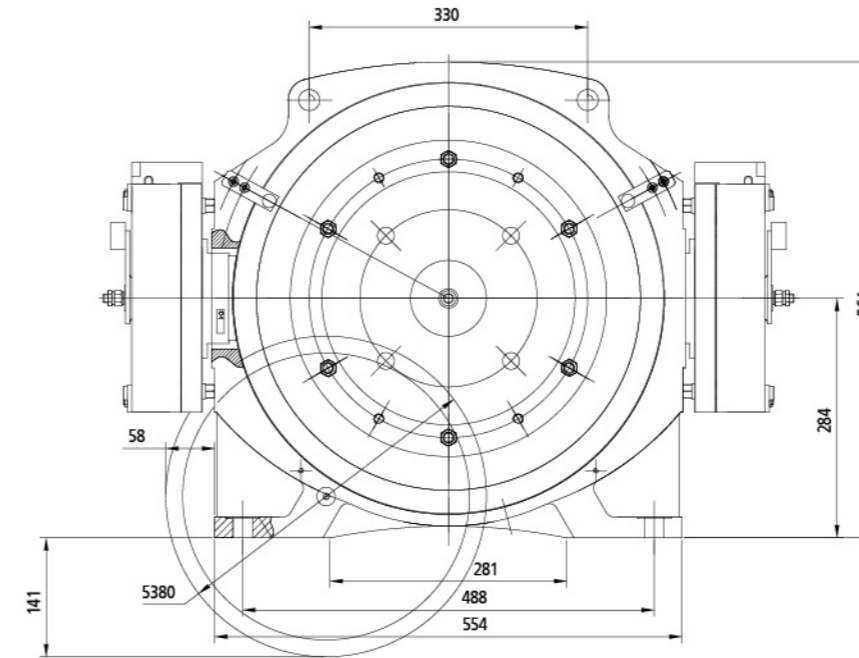


规格表 Specification table

型号 Product type	曳引比 Traction Ratio	额定载重 Load (kg)	电梯额定速度 Elevator Speed (m/s)	额定转速 Rated speed (r/min)	额定转矩 Rated torque (N.m)	电机 Motor					制动器 Brake			曳引轮 Sheave				
						功率 Power (kW)	电压 Voltage (V)	电流 Current (A)	极对数 Poles (p)	频率 Frequency (Hz)	电流 Current (A)	电压 Voltage (V)	制动力矩 Brake torque (N.m)	节径 Diameter (mm)	绳槽 Rope rxd	β角 β angle	γ角 γ angle	槽距 Groove pitch (mm)
GETM3.5H-200/0800	2:1	800	2.0	170	551	9.8	340	20.6	16	45.3	2x1.1	DC110V	2x880	ø450	6xø10	90°	25°	15
GETM3.5H-250/0800			2.5	212		12.3		25.7		56.5								
GETM3.5H-200/1000	2:1	1000	2.0	170	689	12.3	340	26.5	16	45.3	2x1.1	DC110V	2x880	ø450	7xø10	90°	25°	15
GETM3.5H-250/1000			2.5	212		15.3		34.8		56.5								

注: 1、以上信息仅供参考, 具体参数请以ODF表为准; 2、绳槽数量、β角、γ角可根据客户系统进行非标; 3、极数=2倍极对数。  
Note: 1. Above parameters for information only, final parameters shall be as per ODF. 2. Quantity of rope groove number, β angle and γ angle can be tailor-made according to customer's requests.

外形尺寸图 Overall Dimensions



- 注: 1、本机型分为有盘车和无盘车两种状态;  
2、括号里数值表示无盘车时尺寸;  
3、可配备远程松闸装置, 松闸线长4~10米。

Remarks:  
1. Both hand wind and hand wind-less types are available.  
2. The data in the bracket is for the size of hand wind-less type.  
3. Remote release device is available, the length of releasing wire ranges 4~10m.

# GETM3.5H

许用径向载荷 Max. axle load	3500kg
曳引机概算重量 Motor weight	φ450时471kg; φ490时485kg 471kg(sheave dia.φ450); 485kg(sheave dia.φ490)
工作制 Working duty	S5-40%ED
绝缘等级 Ins. class	155(F)
制动器型号及数量 Brake type	2只DZD1-500

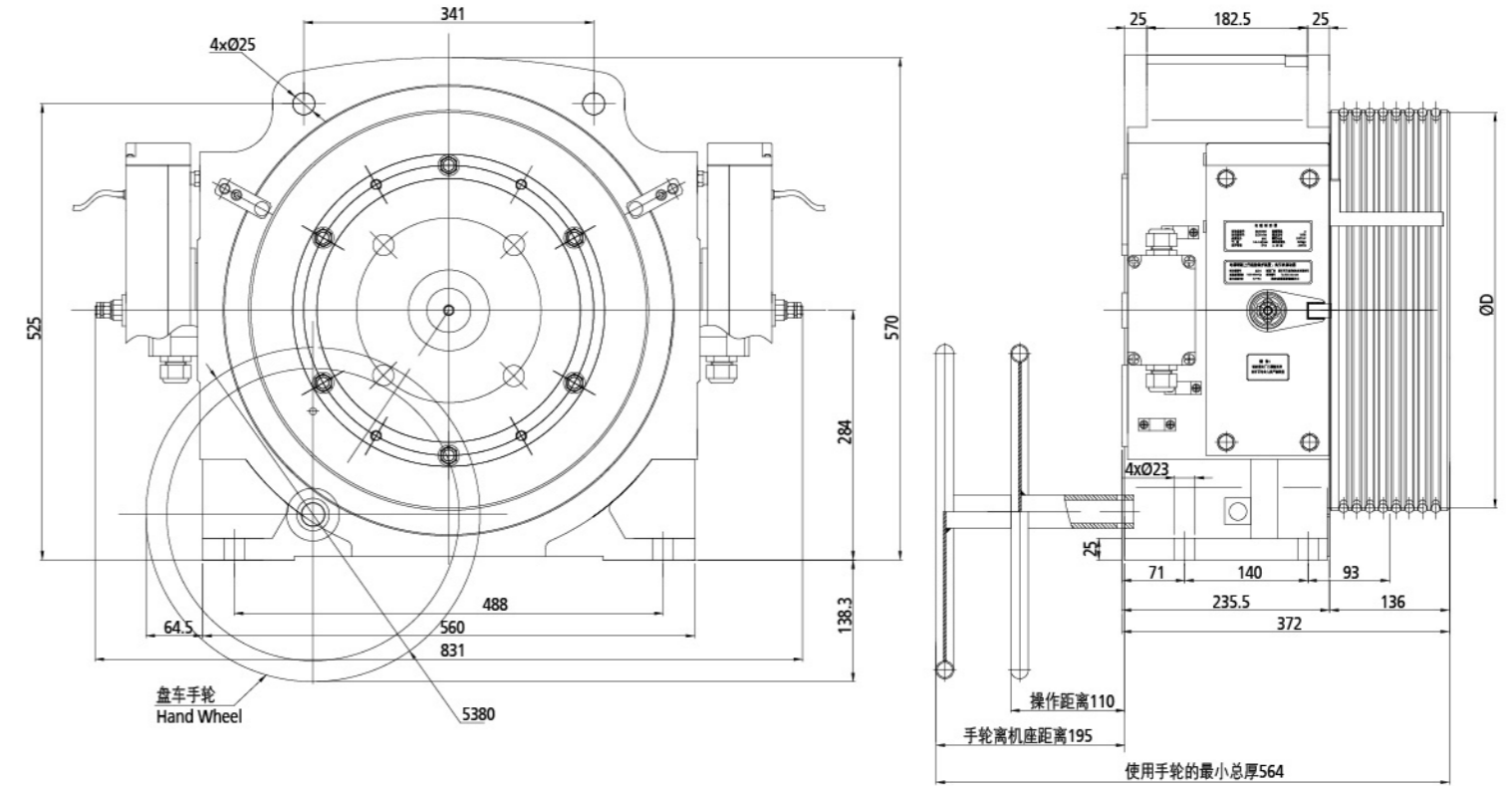


规格表 Specification table

型号 Product type	曳引比 Traction Ratio	额定 载重 Load (kg)	电梯 额定速度 Elevator Speed (m/s)	额定转速 Rated speed (r/min)	额定转矩 Rated torque (N.m)	电机 Motor					制动器 Brake			曳引轮 Sheave					
						功率 Power (kW)	电压 Voltage (V)	电流 Current (A)	极对数 Poles (p)	频率 Frequency (Hz)	电流 Current (A)	电压 Voltage (V)	制动力矩 Brake torque (N.m)	节径 Diameter (mm)	绳槽 Rope nxd	β角 β angle	γ角 γ angle	槽距 Groove pitch (mm)	
GETM3.5H-100/1150	2:1	1150	1.0	85	793	7.0	340	17.3	16	22.7	2x1.1	DC110	2x1000	450	8xφ10	90°	25°	15	
GETM3.5H-150/1150			1.5	127	793	10.6		22.7		33.9					8xφ10				
GETM3.5H-175/1150			1.75	149	793	12.3		28		30.1					45.3				8xφ10
GETM3.5H-200/1150			2.0	170	793	14.1		30.1		45.3					8xφ10				
GETM3.5H-250/1150			2.5	212	793	17.6		40		56.5					8xφ10				
GETM3.5H-175/0800	2:1	800	1.75	136	604	8.6	340	20.4	16	36.3	2x1	DC110	2x940	490	5xφ10	90°	25°	16	
GETM3.5H-200/0800			2.0	156	604	9.8		23.6		41.6					5xφ10				
GETM3.5H-250/0800			2.5	195	604	12.3		29.1		52.0					5xφ10				
GETM3.5H-175/1000	2:1	1000	1.75	136	750	10.7	340	26.3	16	36.3	2x1	DC110	2x940	490	5xφ10	90°	25°	16	
GETM3.5H-175/1000			1.75	136	750	10.7		26.3		36.3					6xφ10				
GETM3.5H-200/1000			2.0	156	750	12.3		29.5		41.6					5xφ10				
GETM3.5H-200/1000			2.0	156	750	12.3		29.5		41.6					6xφ10				
GETM3.5H-250/1000			2.5	195	750	15.3		35.1		52.0					5xφ10				
GETM3.5H-250/1000			2.5	195	750	15.3		35.1		52.0					6xφ10				

注: 1. 以上信息仅供参考, 具体参数请以ODF表为准; 2. 绳槽数量、β角、γ角可根据客户系统进行非标; 3. 极数=2倍极对数。  
Note: 1. Above parameters for information only, final parameters shall be as per ODF. 2. Quantity of rope groove number, β angle and γ angle can be tailor-made according to customer's requests.

外形尺寸图 Overall Dimensions



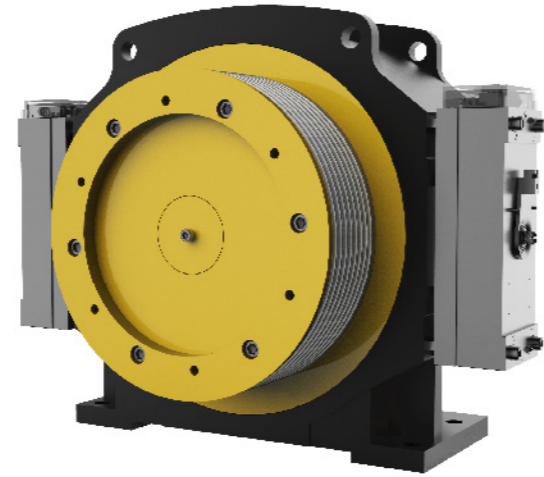
- 注: 1. 本机型分为有盘车和无盘车两种状态;  
2. 括号里数值表示无盘车时尺寸;  
3. 可配备远程松闸装置, 松闸线长4~10米;  
4. 曳引轮节径分为φ450和φ490两种。

- Remarks:  
1. Both hand wind and hand wind-less types are available.  
2. The data in the bracket is for the size of hand wind-less type.  
3. Remote release device is available, the length of releasing wire ranges 4~10m.  
4. The pitch of the traction sheave has two options as 450mm/490 mm.

D
450
490

# GETM5.0H

许用径向载荷 Max. axle load	5000kg
曳引机概算重量 Motor weight	580kg
工作制 Working duty	S5-40%ED
绝缘等级 Ins. class	155(F)
制动器型号及数量 Brake type	2只DZD1-653

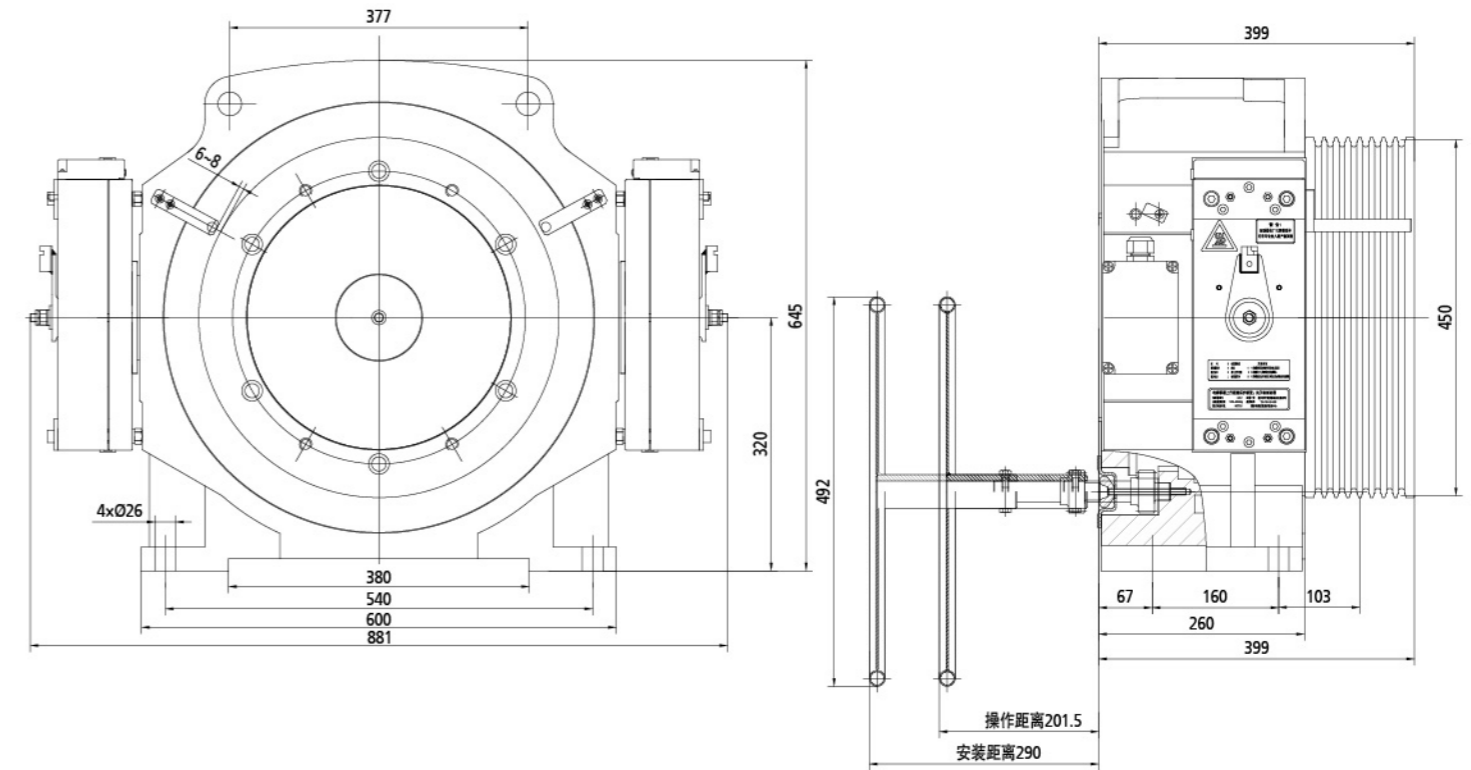


规格表 Specification table

型号 Product type	曳引比 Traction Ratio	额定 载荷 Load (kg)	电梯 额定速度 Rated speed (m/s)	额定转速 Rated speed (r/min)	额定转矩 Rated torque (N.m)	电机 Motor					制动器 Brake			曳引轮 Sheave				
						功率 Power (kW)	电压 Voltage (V)	电流 Current (A)	极对数 Poles (p)	频率 Frequency (Hz)	电流 Current (A)	电压 Voltage (V)	制动力矩 Brake torque (N.m)	节径 Diameter (mm)	绳槽 Rope rxid	β角 β angle	γ角 γ angle	槽距 Groove pitch (mm)
GETM5.0H-250/1350	2:1	1350	2.5	212	1050	22.6	340	50	16	56.6	2x1.15	DC110	2x1270	450	8xø10	96°	35°	15
GETM5.0H-200/1350			2.0	170		18.0		40		45.3								
GETM5.0H-175/1350			1.75	149		15.8		35		39.6								
GETM5.0H-160/1350			1.6	136		14.4		32		36.2								
GETM5.0H-150/1350			1.5	127		13.5		30		34.0								
GETM5.0H-100/1350			1.0	85		9.0		20		22.6								
GETM5.0H-250/1250	2:1	1250	2.5	212	940	20.9	340	47	16	56.6	2x1.15	DC110	2x1270	450	8xø10	96°	35°	15
GETM5.0H-200/1250			2.0	170		16.7		38		45.3								
GETM5.0H-175/1250			1.75	149		14.6		33		39.6								
GETM5.0H-160/1250			1.6	136		13.4		30		36.2								
GETM5.0H-150/1250			1.5	127		12.5		28		34.0								
GETM5.0H-100/1250			1.0	85		8.4		19		22.6								

注: 1. 以上信息仅供参考, 具体参数请以ODF表为准; 2. 绳槽数量、β角、γ角可根据客户系统进行非标; 3. 极数=2倍极对数。  
Note: 1. Above parameters for information only, final parameters shall be as per ODF. 2. Quantity of rope groove number, β angle and γ angle can be tailor-made according to customer's requests.

## 外形尺寸图 Overall Dimensions



注: 1、本机型分为有盘车和无盘车两种状态;  
2、可配备远程松闸装置, 松闸线长4~10米。

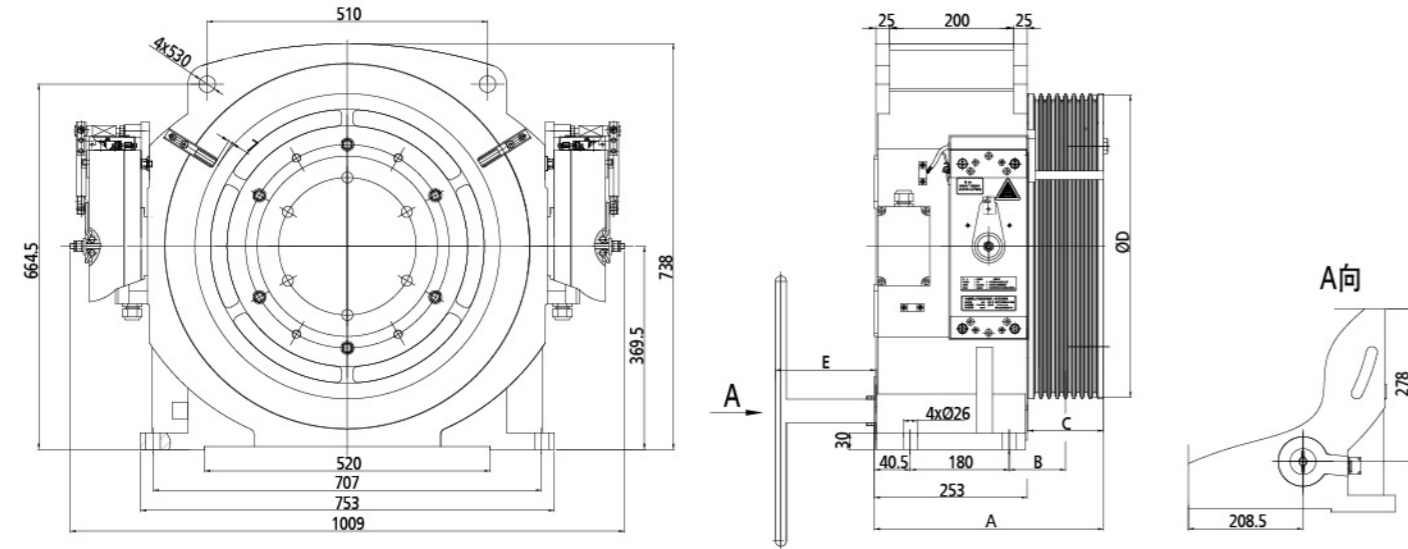
Remarks:  
1. Both hand wind and hand wind-less types are available.  
2. Remote release device is available, the length of releasing wire ranges 4~10m.

# GETM6.0H

许用径向载荷 Max. axle load	6000kg
曳引机概算重量 Motor weight	ø450时682kg; ø550时752~802kg 682kg(sheave dia.ø450); 752~802kg(sheave dia.ø550)
工作制 Working duty	S5-40%ED
绝缘等级 Ins. class	155(F)
制动器型号及数量 Brake type	2只DZD1-653



## 外形尺寸图 Overall Dimensions



	≤1600kg (有盘车 hand-wind)	≤1600kg (无盘车 hand-windless)	2000kg (有盘车 hand-wind)
A	392	392	408
B	102.5	102.5	110.5
C	138	138	154
E	183	/	183

D
450
550

- 注: 1、本机分为有盘车和无盘车两种状态;  
2、1600kg可配备远程松闸装置, 松闸线长4~10米;  
3、2000kg不配远程松闸装置。

Remark:

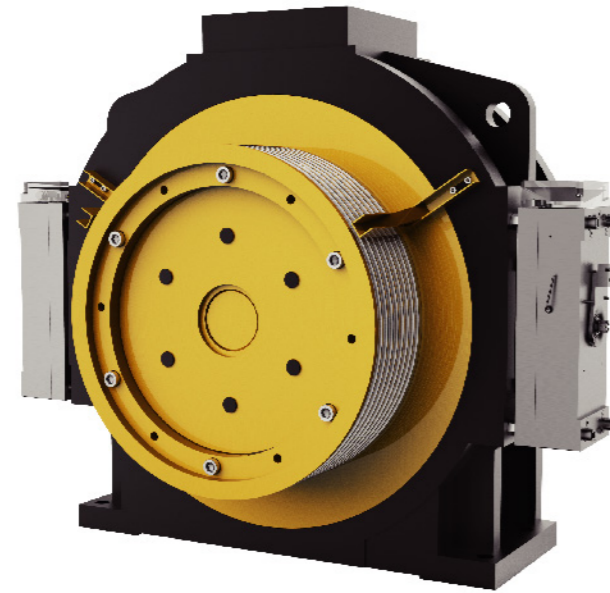
- Both hand-wind and hand-windless is available for this type of machine.
- Remote releasing device is available for 1600kg machine, and the length of brake wire ranges from 4m to 10m.
- Remote releasing device is not available for 2000kg machine

## 规格表 Specification table

型号 Product type	曳引比 Traction Ratio	额定 载重 Load (kg)	电梯 额定速度 Elevator Speed (m/s)	额定转速 Rated speed (r/min)	额定转矩 Rated torque (N.m)	电机 Motor				制动器 Brake			曳引轮 Sheave					
						功率 Power (kW)	电压 Voltage (V)	电流 Current (A)	极对数 Poles (p)	频率 Frequency (Hz)	电流 Current (A)	电压 Voltage (V)	制动力矩 Brake torque (N.m)	直径 Diameter (mm)	绳槽 Rope rxd	β角 β angle	γ角 γ angle	槽距 Groove pitch (mm)
GETM6.0H-100/1600	2:1	1600	1	85	1176	10.5	340	23	16	22.7	2x1.15	DC 110	2x1470	450	8xø10	96°	35°	15
GETM6.0H-150/1600			1.5	127		15.7		34.5		33.9								
GETM6.0H-160/1600			1.6	136		16.7		39		36.3								
GETM6.0H-175/1600			1.75	149		18.3		39		39.7								
GETM6.0H-200/1600			2	170		20.9		44		45.3								
GETM6.0H-250/1600	2.5	212	26.1	55	56.5													
GETM6.0H-175/2000	2:1	2000	1.75	149	1470	22.9	340	48.5	16	39.7	2x1.15	DC 110	2x1838	450	9xø10	90°	25°	15
GETM6.0H-100/2000			1	85		13.1		29.5		22.7								
GETM6.0H-063/2000			0.63	53.5		8.2		20.5		14.3								
GETM6.0H-050/2000			0.5	42.5		6.5		16		11.3								
GETM6.0H-100/1150	2:1	1150	1	69	1033	7.5	340	18.1	16	18.4	2x1.15	DC 110	2x1470	550	6xø10	96°	35°	16
GETM6.0H-175/1150			1.75	122		13.2		28.9		32.5								
GETM6.0H-200/1150			2	139		15		33.9		37.1								
GETM6.0H-100/1250	2:1	1250	1	69	1123	8.2	340	18.6	16	18.4	2x1.15	DC 110	2x1550	550	7xø10	96°	35°	16
GETM6.0H-175/1250			1.75	122		14.3		30.5		32.5								
GETM6.0H-200/1250			2	139		16.3		39.8		37.1								
GETM6.0H-250/1250			2.5	174		20.4		42.5		46.4								
GETM6.0H-100/1350	2:1	1350	1	69	1213	8.8	340	20.4	16	18.4	2x1.15	DC 110	2x1550	550	7xø10	96°	35°	16
GETM6.0H-175/1350			1.75	122		15.4		33		32.5								
GETM6.0H-200/1350			2	139		17.6		39.8		37.1								
GETM6.0H-250/1350			2.5	174		22.1		46.2		46.4								
GETM6.0H-100/1600	2:1	1600	1	69	1437	10.5	340	23.1	16	18.4	2x1.15	DC 110	2x1838	550	8xø10	96°	35°	16
GETM6.0H-150/1600			1.5	104		15.7		34.4		27.7								
GETM6.0H-175/1600			1.75	122		18.3		39.6		32.5								
GETM6.0H-200/1600			2	139		20.9		46		37.1								
GETM6.0H-250/1600			2.5	174		26.1		55.9		46.4								
GETM6.0H-300/1000	2:1	1000	3	208	898	19.6	340	41.5	16	55.5	2x1.15	DC 110	2x1470	550	5xø10	96°	35°	16
GETM6.0H-300/1150	2:1	1150	3	208	1033	22.5	340	48	16	55.5	2x1.15	DC 110	2x1470	550	6xø10	96°	35°	16
GETM6.0H-300/1250	2:1	1250	3	208	1123	24.5	340	52.5	16	55.5	2x1.15	DC 110	2x1550	550	7xø10	96°	35°	16
GETM6.0H-300/1350	2:1	1350	3	208	1213	26.5	340	56.8	16	55.5	2x1.15	DC 110	2x1550	550	7xø10	96°	35°	16
GETM6.0H-300/1600	2:1	1600	3	208	1470	32.1	340	69.5	16	55.5	2x1.15	DC 110	2x1838	550	8xø10	96°	35°	16

注: 1、以上信息仅供参考, 具体参数请以ODF表为准; 2、绳槽数量、β角、γ角可根据客户系统进行非标; 3、极数=2倍极对数。  
Note: 1. Above parameters for information only, final parameters shall be as per ODF. 2. Quantity of rope groove number, β angle and γ angle can be tailor-made according to customer's requests.

# GETM8.0H



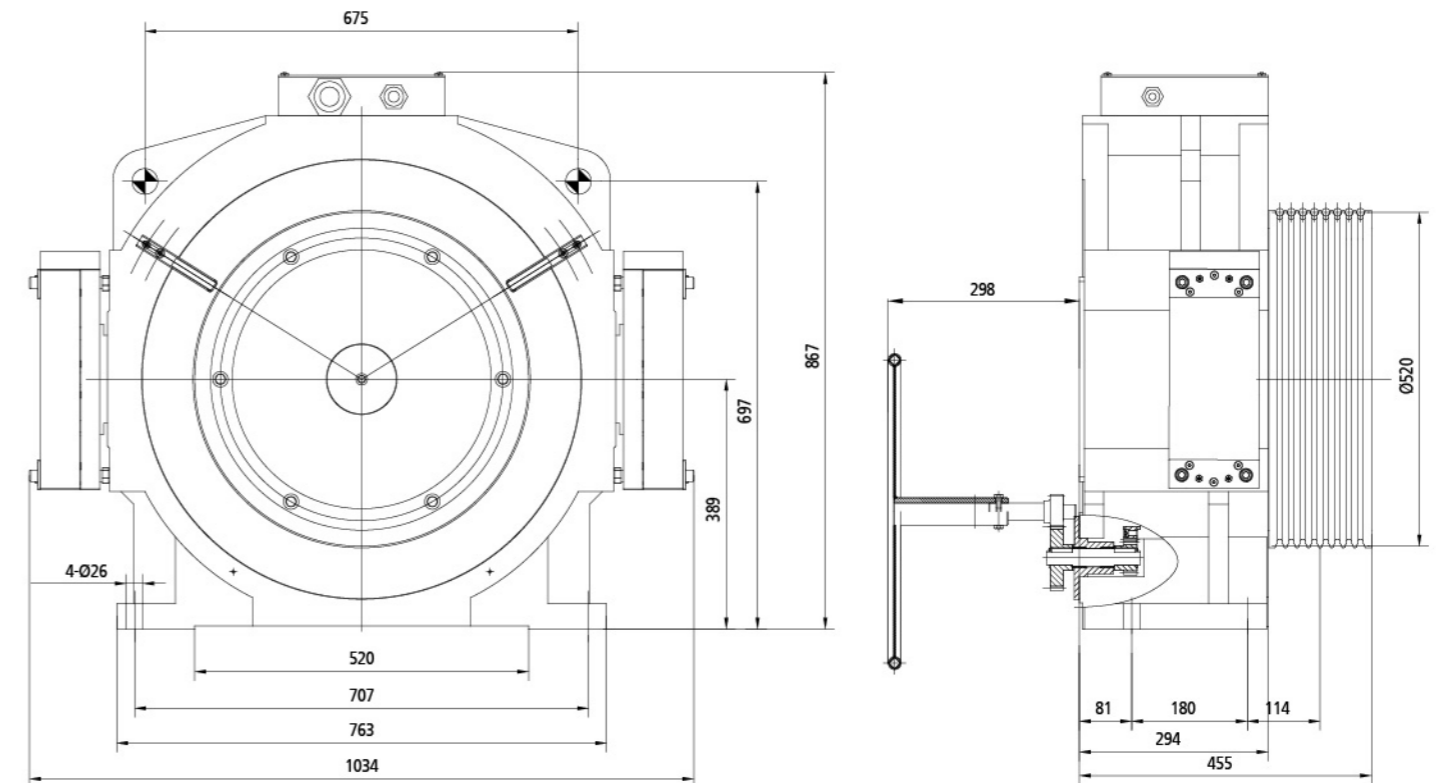
许用径向载荷 Max. axle load	8000kg
曳引机概算重量 Motor weight	1010kg
工作制 Working duty	S5-40%ED
绝缘等级 Ins. class	155(F)
制动器型号及数量 Brake type	2只DZD1-21800

规格表 Specification table

型号 Product type	曳引比 Traction Ratio	额定载重 Load (kg)	电梯额定速度 Elevator Speed (m/s)	额定转速 Rated speed (r/min)	额定转矩 Rated torque (N.m)	电机 Motor					制动器 Brake			曳引轮 Sheave				
						功率 Power (kW)	电压 Voltage (V)	电流 Current (A)	极对数 Poles (p)	频率 Frequency (Hz)	电流 Current (A)	电压 Voltage (V)	制动力矩 Brake torque (N.m)	节径 Diameter (mm)	绳槽 Rope nxd	β角 β angle	γ角 γ angle	槽距 Groove pitch (mm)
GETM8.0H-250/2500	2:1	2500	2.5	184	2123	40.8	340	85.5	16	49.1	2x1.6	DC110	2x2654	520	7xφ13	85°	35°	20
GETM8.0H-200/2500			2.0	147		32.7		68.5		39.2								
GETM8.0H-175/2500			1.75	129		28.6		60		34.4								
GETM8.0H-100/2500			1.0	73		16.3		32.3		19.5								

注: 1. 以上信息仅供参考, 具体参数请以ODF表为准; 2. 绳槽数量、β角、γ角可根据客户系统进行非标; 3. 极数=2倍极对数。  
 Note: 1. Above parameters for information only, final parameters shall be as per ODF. 2. Quantity of rope groove number, β angle and γ angle can be tailor-made according to customer's requests.

外形尺寸图 Overall Dimensions





## 超薄主机系列 Flat Machine



使用磁环编码器后置，安装维护简单，所需空间小  
Meg-loop encoder, which permits narrow access space, is adopted which brings convenience in installation and maintenance.



定轴形式，利于轴承布置，延长寿命  
Arbor is adopted in order to ensure long lift-span of bearings and optimized bearing lay-out.



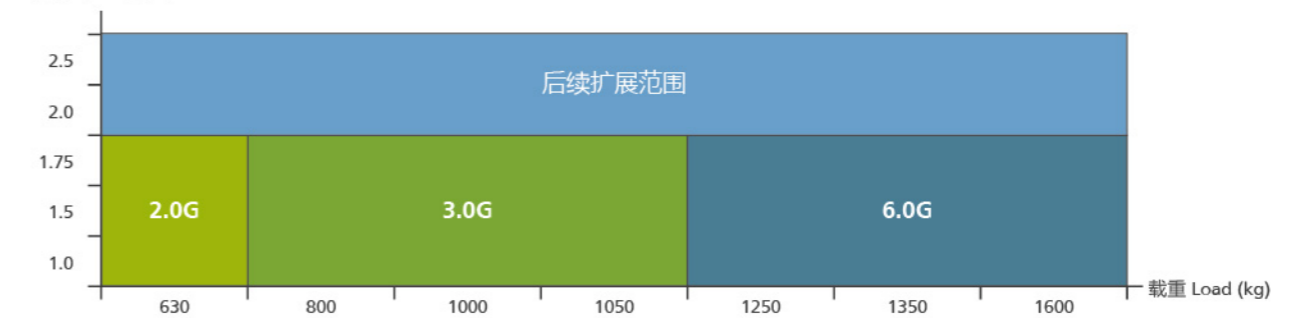
选用静音、快调制动器，工地调节维护简便  
Super-quiet & easily-adjustable brakes used, make the work-site maintenance and adjustment an easy job.



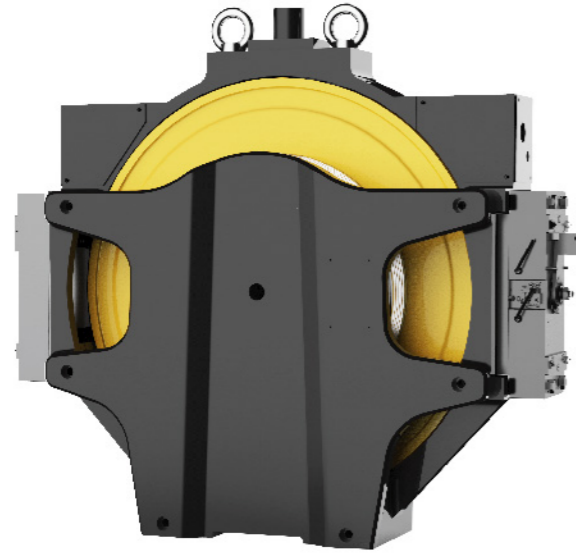
可用于导轨安装  
Applicable for rail mounting.

### 产品系列 Products Series

速度 Speed (m/s)



# GETM3.0G



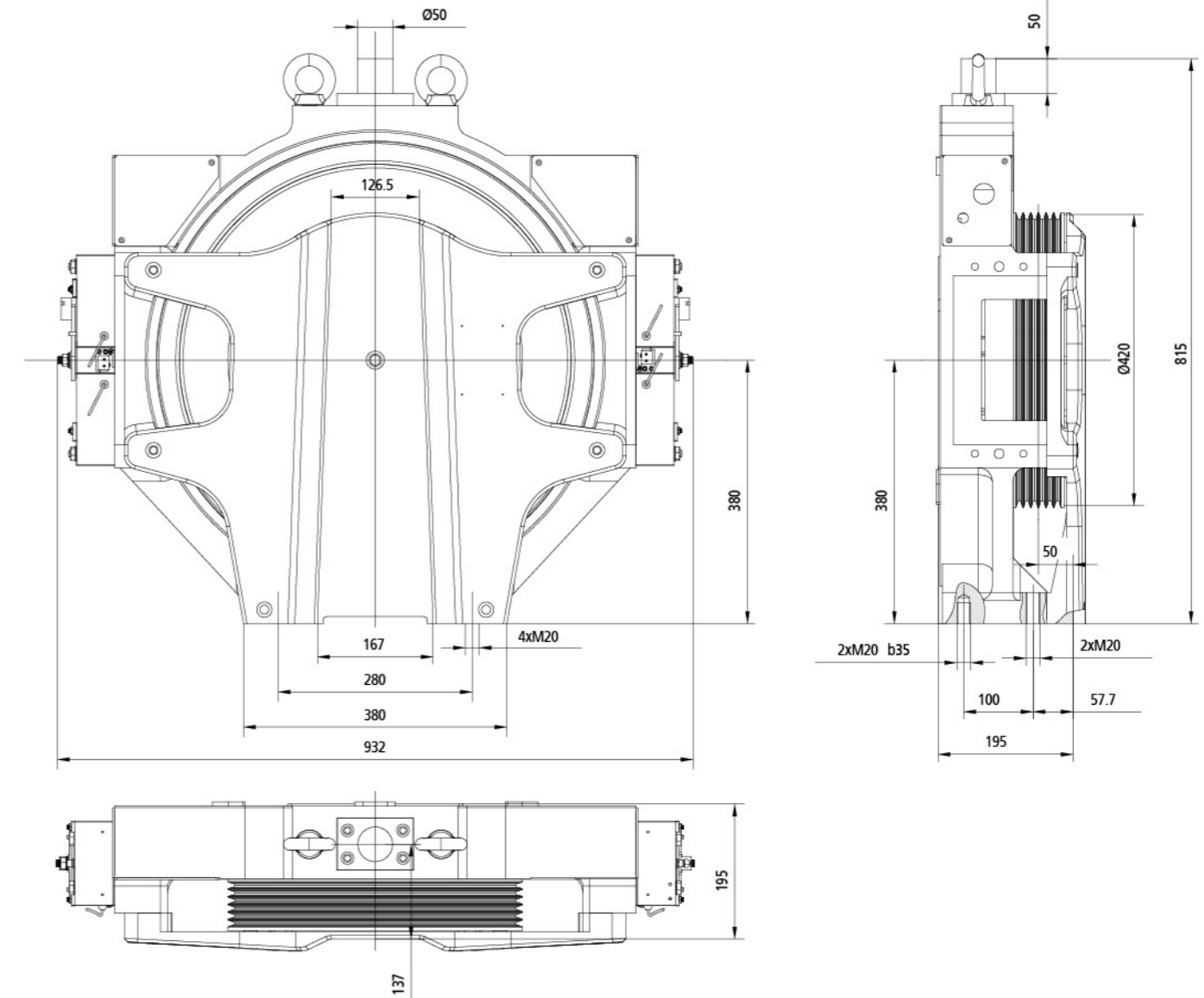
许用径向载荷 Max. axle load	3000kg
曳引机概算重量 Motor weight	400kg
工作制 Working duty	S5-40%ED
绝缘等级 Ins. class	155(F)
制动器型号及数量 Brake type	2只DZD2
平衡系数要求 Balance factor	≥0.47

规格表 Specification table

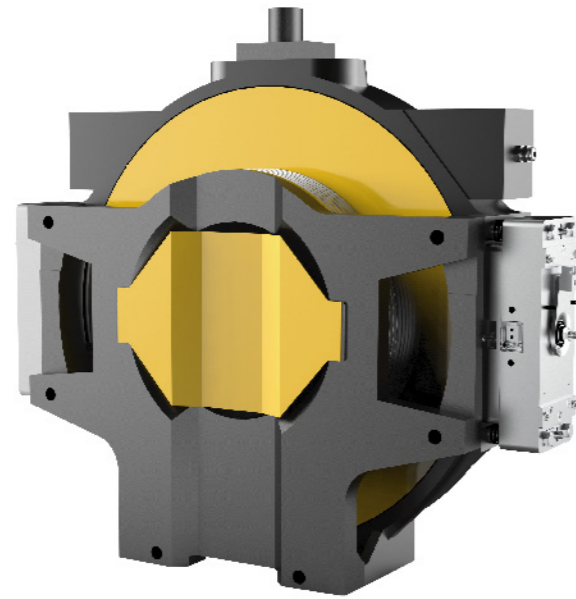
型号 Product type	曳引比 Traction Ratio	额定 载重 Load (kg)	电梯 额定速度 Rated speed (m/s)	额定转速 Rated speed (r/min)	额定转矩 Rated torque (N.m)	电机 Motor				制动器 Brake			曳引轮 Sheave					
						功率 Power (kW)	电压 Voltage (V)	电流 Current (A)	极对数 Poles (p)	频率 Frequency (Hz)	电流 Current (A)	电压 Voltage (V)	制动力矩 Brake torque (N.m)	节径 Diameter (mm)	绳槽 Rope rxd	β角 β angle	γ角 γ angle	槽距 Groove pitch (mm)
GETM3.0G-100/0800	2:1	800	1.0	91	510	4.8	340	13	10	15.2	2x1.15	DC110	2x832	420	6xø8	96°	35°	11
GETM3.0G-150/0800			1.5	136		7.3		21		22.7								
GETM3.0G-175/0800			1.75	159		8.5		21.5		26.5								
GETM3.0G-100/1000	2:1	1000	1.0	91	630	6.0	340	16	10	15.2	2x1.15	DC110	2x832	420	6xø8	96°	35°	11
GETM3.0G-150/1000			1.5	136		9.0		26		22.7								
GETM3.0G-175/1000			1.75	159		10.6		27.5		26.5								
GETM3.0G-100/1050	2:1	1050	1.0	91	665	6.3	340	17	10	15.2	2x1.15	DC110	2x832	420	6xø8	96°	35°	11
GETM3.0G-150/1050			1.5	136		9.5		27		22.7								
GETM3.0G-175/1050			1.75	159		11.1		28		26.5								

注: 1. 以上信息仅供参考, 具体参数请以ODF表为准; 2. 绳槽数量、β角、γ角可根据客户系统进行非标; 3. 极数=2倍极对数。  
 Note: 1. Above parameters for information only, final parameters shall be as per ODF. 2. Quantity of rope groove number, β angle and γ angle can be tailor-made according to customer's requests.

# 外形尺寸图 Overall Dimensions



# GETM3.0G



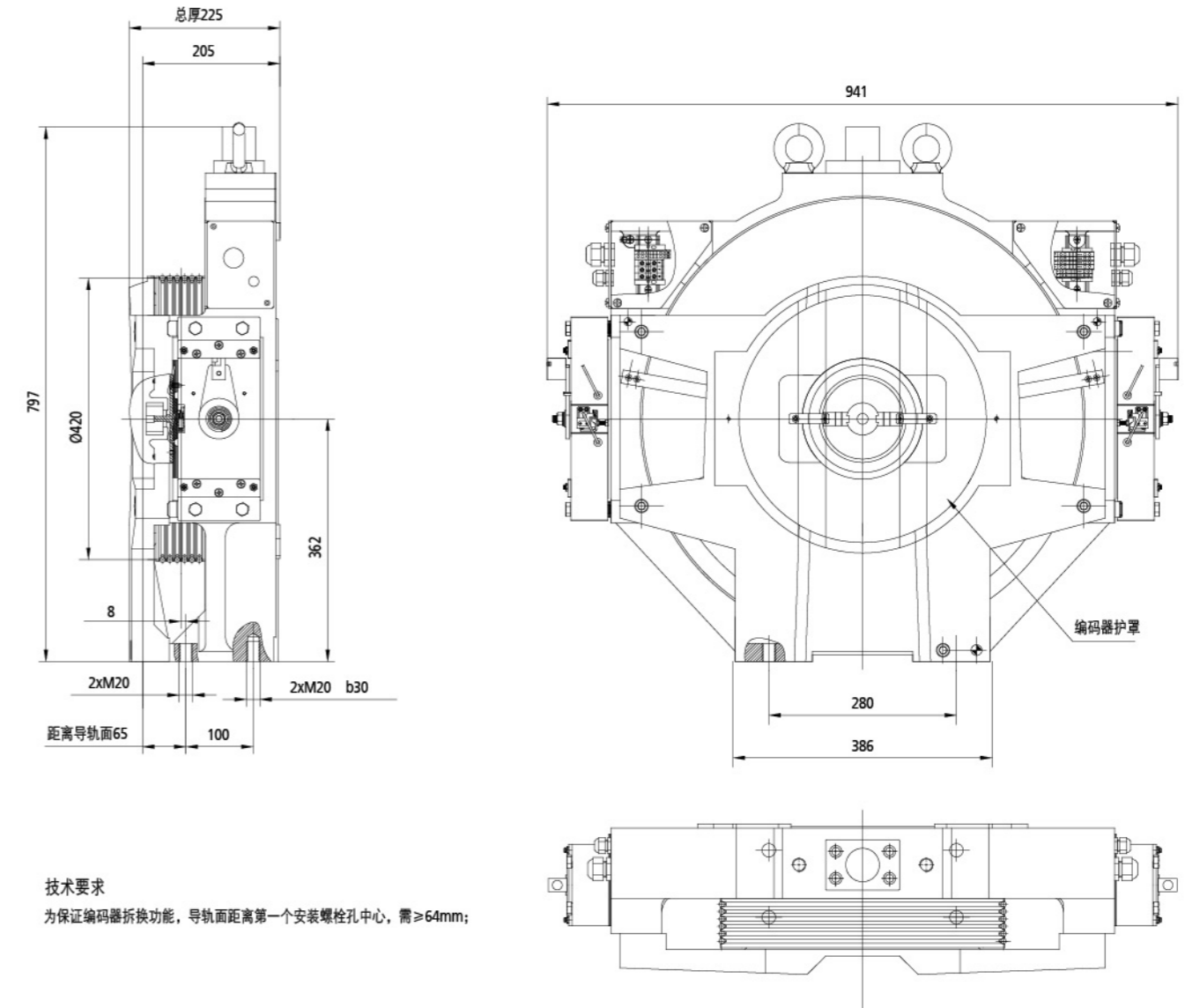
许用径向载荷 Max. axle load	3000kg
曳引机概算重量 Motor weight	400kg
工作制 Working duty	S5-40%ED
绝缘等级 Ins. class	155(F)
制动器型号及数量 Brake type	2只DZD2
平衡系数要求 Balance factor	≥0.47

规格表 Specification table

型号 Product type	曳引比 Traction Ratio	额定 载荷 Load (kg)	电梯 额定速度 Elevator Speed (m/s)	额定转速 Rated speed (r/min)	额定转矩 Rated torque (N.m)	电机 Motor					制动器 Brake			曳引轮 Sheave				
						功率 Power (kW)	电压 Voltage (V)	电流 Current (A)	极对数 Poles (p)	频率 Frequency (Hz)	电流 Current (A)	电压 Voltage (V)	制动力矩 Brake torque (N.m)	节径 Diameter (mm)	绳槽 Rope rxd	β角 β angle	γ角 γ angle	槽距 Groove pitch (mm)
GETM3.0G-100/0800	2:1	800	1.0	91	510	4.8	340	13	10	15.2	2x1.15	DC110	2x832	420	6xø8	96°	35°	11
GETM3.0G-150/0800			1.5	136		7.3		21		22.7								
GETM3.0G-175/0800			1.75	159		8.5		21.5		26.5								
GETM3.0G-100/1000	2:1	1000	1.0	91	630	6.0	340	16	10	15.2	2x1.15	DC110	2x832	420	6xø8	96°	35°	11
GETM3.0G-150/1000			1.5	136		9.0		26		22.7								
GETM3.0G-175/1000			1.75	159		10.6		27.5		26.5								
GETM3.0G-100/1050	2:1	1050	1.0	91	665	6.3	340	17	10	15.2	2x1.15	DC110	2x832	420	6xø8	96°	35°	11
GETM3.0G-150/1050			1.5	136		9.5		27		22.7								
GETM3.0G-175/1050			1.75	159		11.1		28		26.5								

注: 1. 以上信息仅供参考, 具体参数请以ODF表为准; 2. 绳槽数量、β角、γ角可根据客户系统进行非标; 3. 极数=2倍极对数。  
Note: 1. Above parameters for information only, final parameters shall be as per ODF. 2. Quantity of rope groove number, β angle and γ angle can be tailor-made according to customer's requests.

## 外形尺寸图 Overall Dimensions





## 条形机系列 Bar-Shaped Machine

该系列主机采用自主研发耐高温稀土材料磁钢，精选国际知名配件，如海德汉编码器等，并运用内转子结构，使产品各项技术指标远远优于行业标准。该系列主机采用长条形结构，使整体结构紧凑，体积小，同时噪音低于58dB(A)（行业标准68dB(A)）。卓越品质和优异性能使其适用于无机房、小机房客梯等。

High-performance heat-resisting NdFeB magnet is adopted, key parts are sourced from world famous suppliers such as Encoder from Heidenhain, and external rotor construction is adopted, all of which makes the performance exceeds the requirements in relevant industrial standards. This series of machine is of flat or bar shape, which makes the machine compact in structure and small in size. The noise level is lower than 58dB(A). The remarkable quality and outstanding performance makes this series an ideal choice for MRL elevator and MMR elevator.



低温升、低噪音、高效平稳  
Low temperature rise, low noise level, high efficient and smooth.

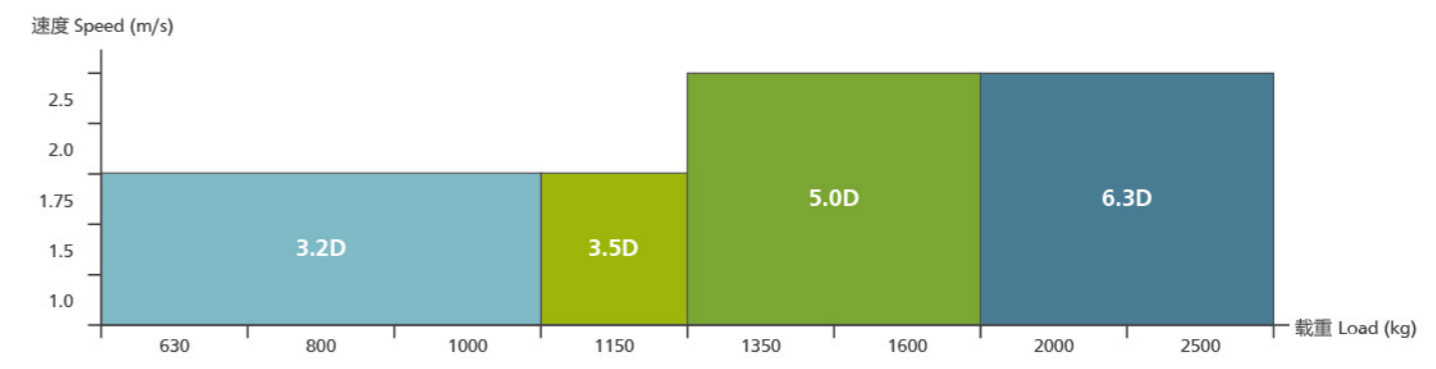


采用自制耐高温稀土材料磁钢，稳定可靠，并设置电机过热保护装置，确保电机永不退磁  
In-house made heat-resisting NdFeB magnet is adopted to insure the reliability and stability. Thermal switch is furnished to make sure that the demagnetization will never occur.

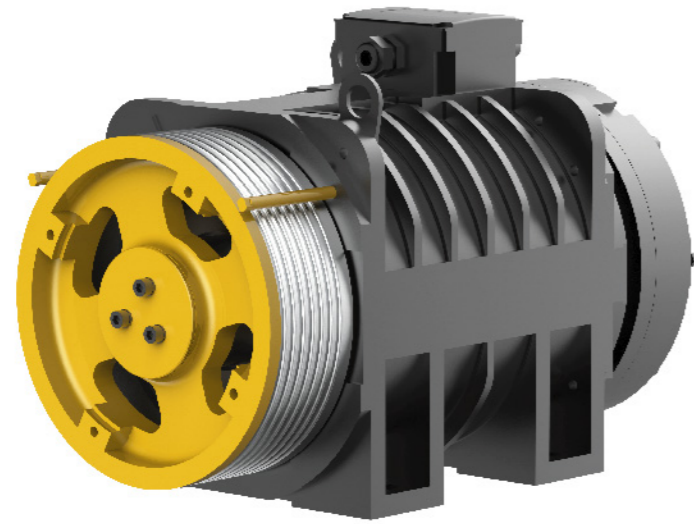


ZZD制动器，反应灵敏，制动可靠。通过CE认证，确保产品完美品质  
ZZD Brakes adopted, swift in response and reliable in braking. CE approved, excellent quality is ensured.

### 产品系列 Products Series



# GETM3.2D



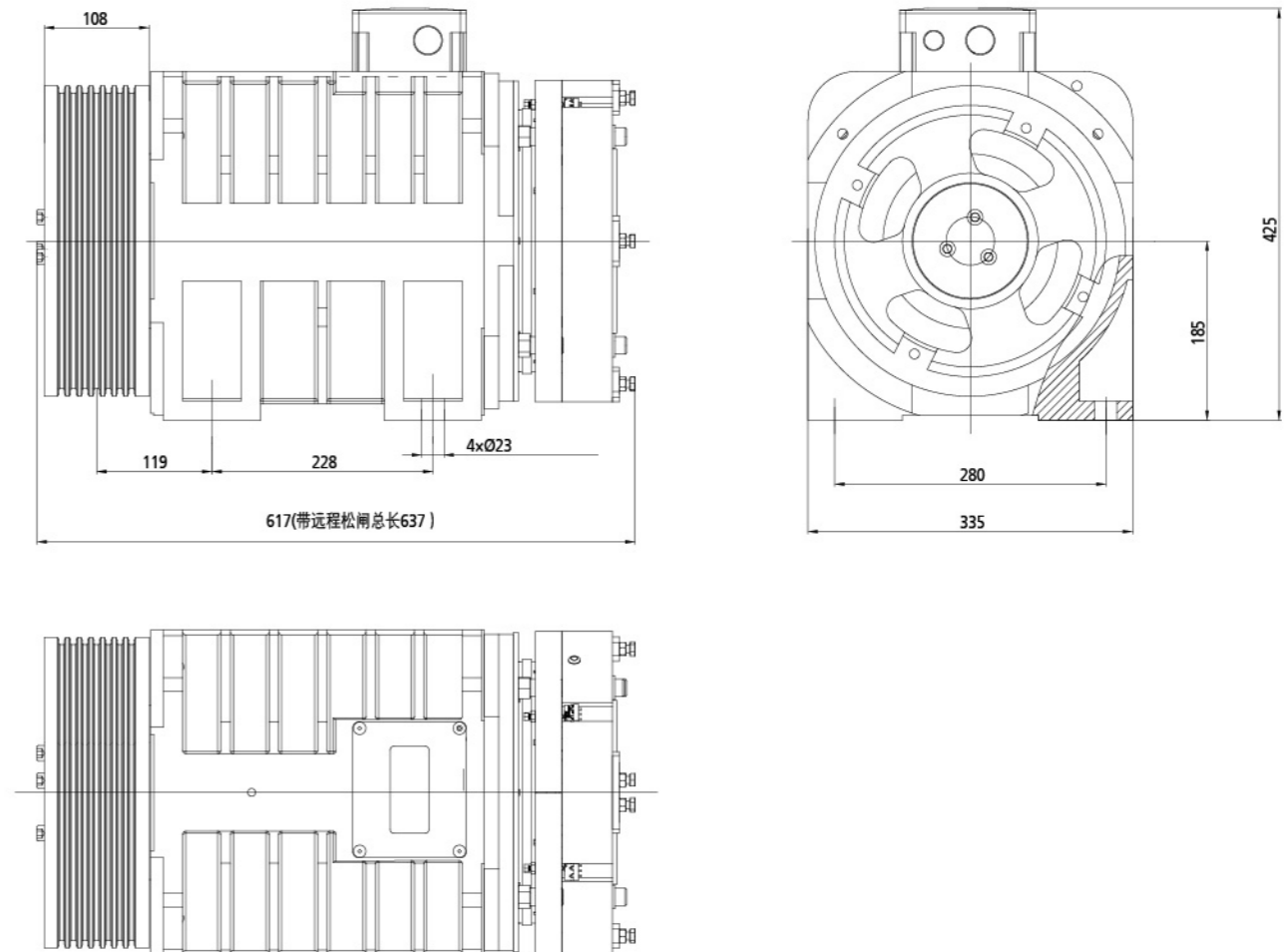
许用径向载荷 Max. axle load	3200kg
曳引机概算重量 Motor weight	266kg
工作制 Working duty	S5-40%ED
绝缘等级 Ins. class	155(F)
制动器型号及数量 Brake type	1只ZZD2-480

规格表 Specification table

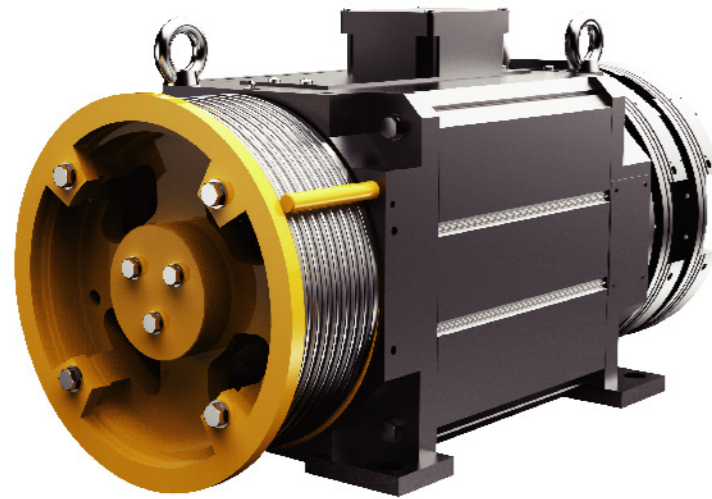
型号 Product type	曳引比 Traction Ratio	额定载重 Load (kg)	电梯额定速度 Elevator Speed (m/s)	额定转速 Rated speed (r/min)	额定转矩 Rated torque (N.m)	电机 Motor				制动器 Brake			曳引轮 Sheave					
						功率 Power (kW)	电压 Voltage (V)	电流 Current (A)	极对数 Poles (p)	频率 Frequency (Hz)	电流 Current (A)	电压 Voltage (V)	制动力矩 Brake torque (N.m)	节径 Diameter (mm)	绳槽 Rope rwd	β角 β angle	γ角 γ angle	槽距 Groove pitch (mm)
GETM3.2D-175/1050	2:1	1050	1.75	209	561	12.3	340	29.6	10	34.8	1.45	DC110V	2x480	ø320	7xø8	90°	30°	12
GETM3.2D-160/1050			1.6	191	561	11.2		29.6		31.8								
GETM3.2D-100/1050			1.0	119	515	6.4		15.5		19.9								
GETM3.2D-175/0800	2:1	800	1.75	209	428	9.4	340	21.9	10	34.8	1.45	DC110V	2x480	ø320	6xø8	90°	30°	12
GETM3.2D-160/0800			1.6	191	428	7.8		18.4		31.8								
GETM3.2D-100/0800			1.0	119	383	4.9		11.8		19.9								

注: 1. 以上信息仅供参考, 具体参数请以ODF表为准; 2. 绳槽数量、β角、γ角可根据客户系统进行非标; 3. 极数=2倍极对数。  
 Note: 1. Above parameters for information only, final parameters shall be as per ODF. 2. Quantity of rope groove number, β angle and γ angle can be tailor-made according to customer's requests.

外形尺寸图 Overall Dimensions



# GETM3.5D



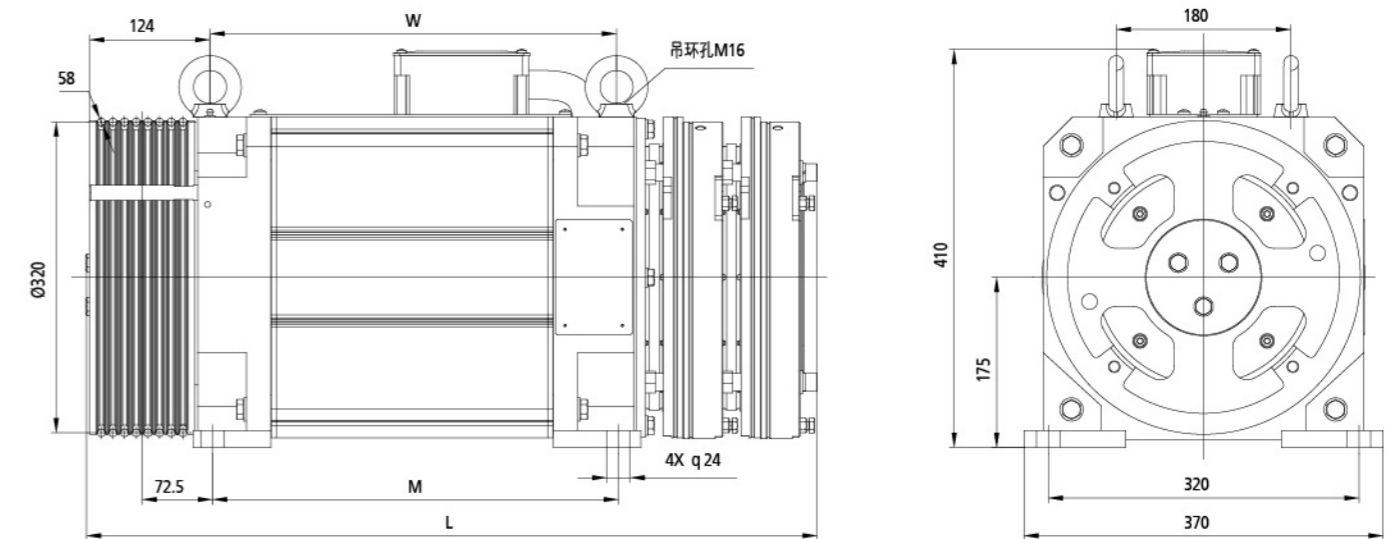
许用径向载荷 Max. axle load	3500kg
曳引机概算重量 Motor weight	365kg
工作制 Working duty	S5-40%ED
绝缘等级 Ins. class	155(F)
制动器型号及数量 Brake type	2只ZZD1-550

规格表 Specification table

型号 Product type	曳引比 Traction Ratio	额定载重 Load (kg)	电梯 额定速度 Elevator Speed (m/s)	额定转速 Rated speed (r/min)	额定转矩 Rated torque (N.m)	电机 Motor					制动器 Brake			曳引轮 Sheave				
						功率 Power (kW)	电压 Voltage (V)	电流 Current (A)	极对数 Poles (p)	频率 Frequency (Hz)	电流 Current (A)	电压 Voltage (V)	制动力矩 Brake torque (N.m)	节径 Diameter (mm)	绳槽 Rope rxid	β角 β angle	γ角 γ angle	槽距 Groove pitch (mm)
GETM3.5D-100/0630	2:1	630	1.0	119	311	3.9	340	10.2	10	19.83	2x0.88	DC110V	2x780	ø320	4xø8	85°	28°	12
GETM3.5D-175/0630			1.75	209		6.8		15.6		34.83								
GETM3.5D-100/0800	2:1	800	1.0	119	393	4.9	340	11.8	10	19.83	2x0.88	DC110V	2x780	ø320	5xø8	85°	28°	12
GETM3.5D-175/0800			1.75	209		8.6		18.9		34.83								
GETM3.5D-100/1000	2:1	1000	1.0	119	482	6	340	14.3	10	19.83	2x0.88	DC110V	2x780	ø320	6xø8	85°	28°	12
GETM3.5D-175/1000			1.75	209		10.7		24		34.83								
GETM3.5D-100/1150	2:1	1150	1.0	119	562	7	340	16.9	10	19.83	2x0.88	DC110V	2x780	ø320	8xø8	85°	28°	12
GETM3.5D-175/1150			1.75	209		12.3		26		34.83								

注: 1. 以上信息仅供参考, 具体参数请以ODF表为准; 2. 绳槽数量、β角、γ角可根据客户系统进行非标; 3. 极数=2倍极对数。  
Note: 1. Above parameters for information only, final parameters shall be as per ODF. 2. Quantity of rope groove number, β angle and γ angle can be tailor-made according to customer's requests.

# 外形尺寸图 Overall Dimensions



额定载重 Load (kg)	L	M	W
1150	722	391	388.5
1000	692	361	358.5
630-800	652	321	318.5

# GETM5.0D



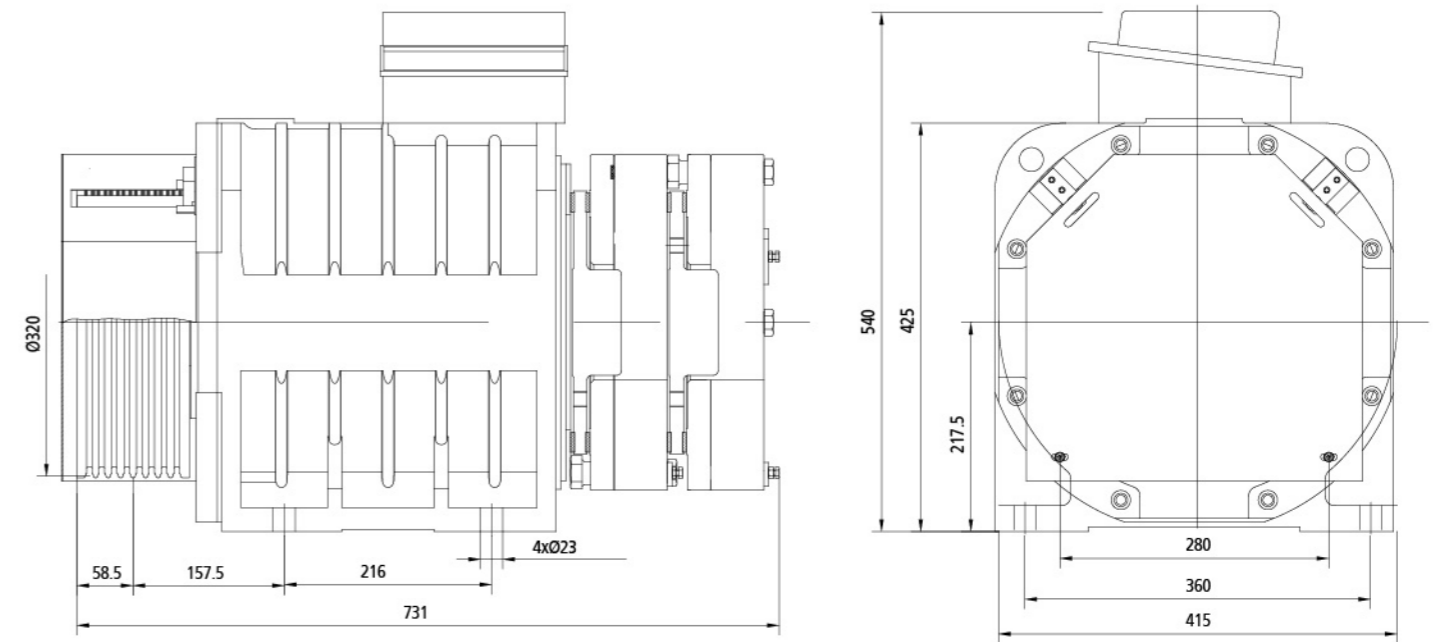
许用径向载荷 Max. axle load	5000kg
曳引机概算重量 Motor weight	695kg
工作制 Working duty	S5-40%ED
绝缘等级 Ins. class	155(F)
制动器型号及数量 Brake type	2只ZZD1-1100

规格表 Specification table

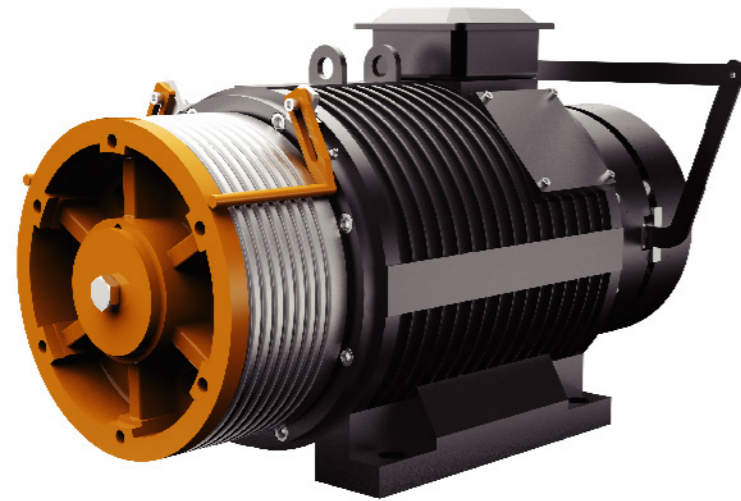
型号 Product type	曳引比 Traction Ratio	额定载重 Load (kg)	电梯额定速度 Elevator Speed (m/s)	额定转速 Rated speed (r/min)	额定转矩 Rated torque (N.m)	电机 Motor					制动器 Brake		曳引轮 Sheave					
						功率 Power (kW)	电压 Voltage (V)	电流 Current (A)	极对数 Poles (p)	频率 Frequency (Hz)	电流 Current (A)	电压 Voltage (V)	制动力矩 Brake torque (N.m)	节径 Diameter (mm)	绳槽 Rope rxd	β角 β angle	γ角 γ angle	槽距 Groove pitch (mm)
GETM5.0D-100/1350	2:1	1350	1.0	119	706	8.8	340	20.3	12	23.8	2x1.51	DC110V	2x1050	ø320	8xø8	90°	25°	13
GETM5.0D-150/1350			1.5	179		13.2		30.3		35.8								
GETM5.0D-175/1350			1.75	209		15.4		35.4		41.8								
GETM5.0D-100/1600	2:1	1600	1.0	119	837	10.5	340	24	12	23.8	2x1.51	DC110V	2x1050	ø320	8xø8	90°	25°	13
GETM5.0D-150/1600			1.5	179		15.7		36		35.8								
GETM5.0D-175/1600			1.75	209		18.3		42		41.8								

注: 1. 以上信息仅供参考, 具体参数请以ODF表为准; 2. 绳槽数量、β角、γ角可根据客户系统进行非标; 3. 极数=2倍极对数。  
 Note: 1. Above parameters for information only, final parameters shall be as per ODF. 2. Quantity of rope groove number, β angle and γ angle can be tailor-made according to customer's requests.

# 外形尺寸图 Overall Dimensions



# GETM6.3D



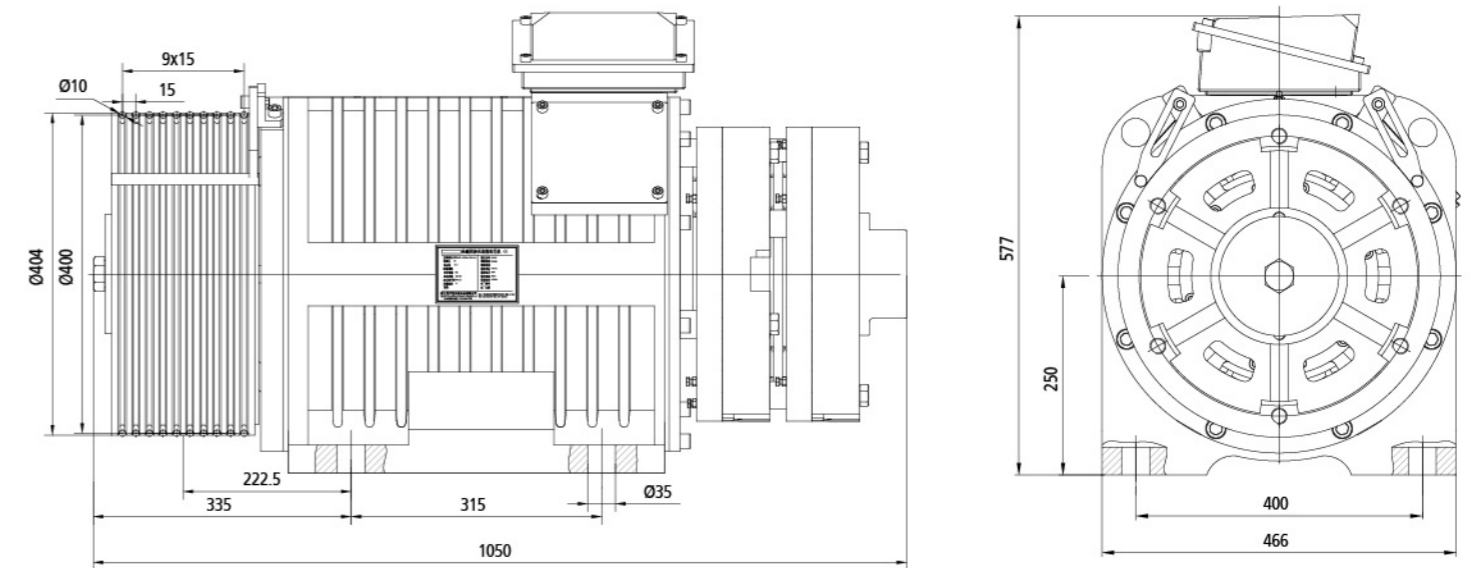
许用径向载荷 Max. axle load	6300kg
曳引机概算重量 Motor weight	730kg
工作制 Working duty	S5-40%ED
绝缘等级 Ins. class	155(F)
制动器型号及数量 Brake type	2只ZZD1-2000

规格表 Specification table

型号 Product type	曳引比 Traction Ratio	额定 载重 Load (kg)	电梯 额定速度 Elevator Speed (m/s)	额定转速 Rated speed (r/min)	额定转矩 Rated torque (N.m)	电机 Motor					制动器 Brake			曳引轮 Sheave				
						功率 Power (kW)	电压 Voltage (V)	电流 Current (A)	极对数 Poles (p)	频率 Frequency (Hz)	电流 Current (A)	电压 Voltage (V)	制动力矩 Brake torque (N.m)	节径 Diameter (mm)	绳槽 Rope rxd	β角 β angle	γ角 γ angle	槽距 Groove pitch (mm)
GETM6.3D-100/2000	2:1	2000	1.0	95	1487	13.4	340	27.5	10	15.83	2x2.87	DC200/100	2x2000	ø400	10xø10	100°	35°	15
GETM6.3D-150/2000			1.5	143		20		40.5		23.83								
GETM6.3D-175/2000			1.75	167		23.4		46.5		27.83								
GETM6.3D-200/2000			2.0	191		26.8		63.1		31.83								
GETM6.3D-250/2000			2.5	239		33.5		75.9		39.83								
GETM6.3D-100/2500	2:1	2500	1.0	95	1671	16.7	340	37	10	15.83	2x2.87	DC200/100	2x2000	ø400	10xø10	100°	35°	15
GETM6.3D-150/2500			1.5	143		25.1		54.1		23.83								
GETM6.3D-175/2500			1.75	167		29		62.1		27.83								
GETM6.3D-200/2500			2.0	191		33.4		75.3		31.83								
GETM6.3D-250/2500			2.5	239		41.8		92		39.83								

注: 1. 以上信息仅供参考, 具体参数请以ODF表为准; 2. 绳槽数量、β角、γ角可根据客户系统进行非标; 3. 极数=2倍极对数。  
 Note: 1. Above parameters for information only, final parameters shall be as per ODF. 2. Quantity of rope groove number, β angle and γ angle can be tailor-made according to customer's requests.

外形尺寸图 Overall Dimensions

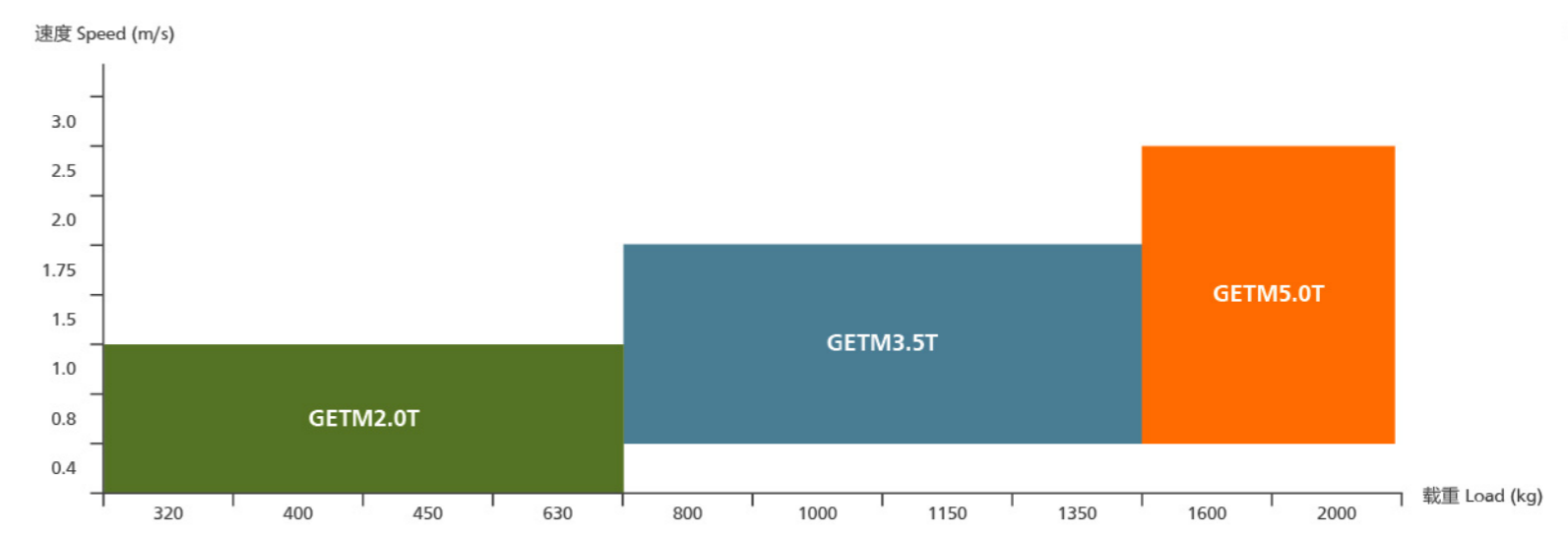




## 钢带主机系列 Belt Machine



Professional components supplier



注：详细规格咨询公司人员

# GETM2.0T

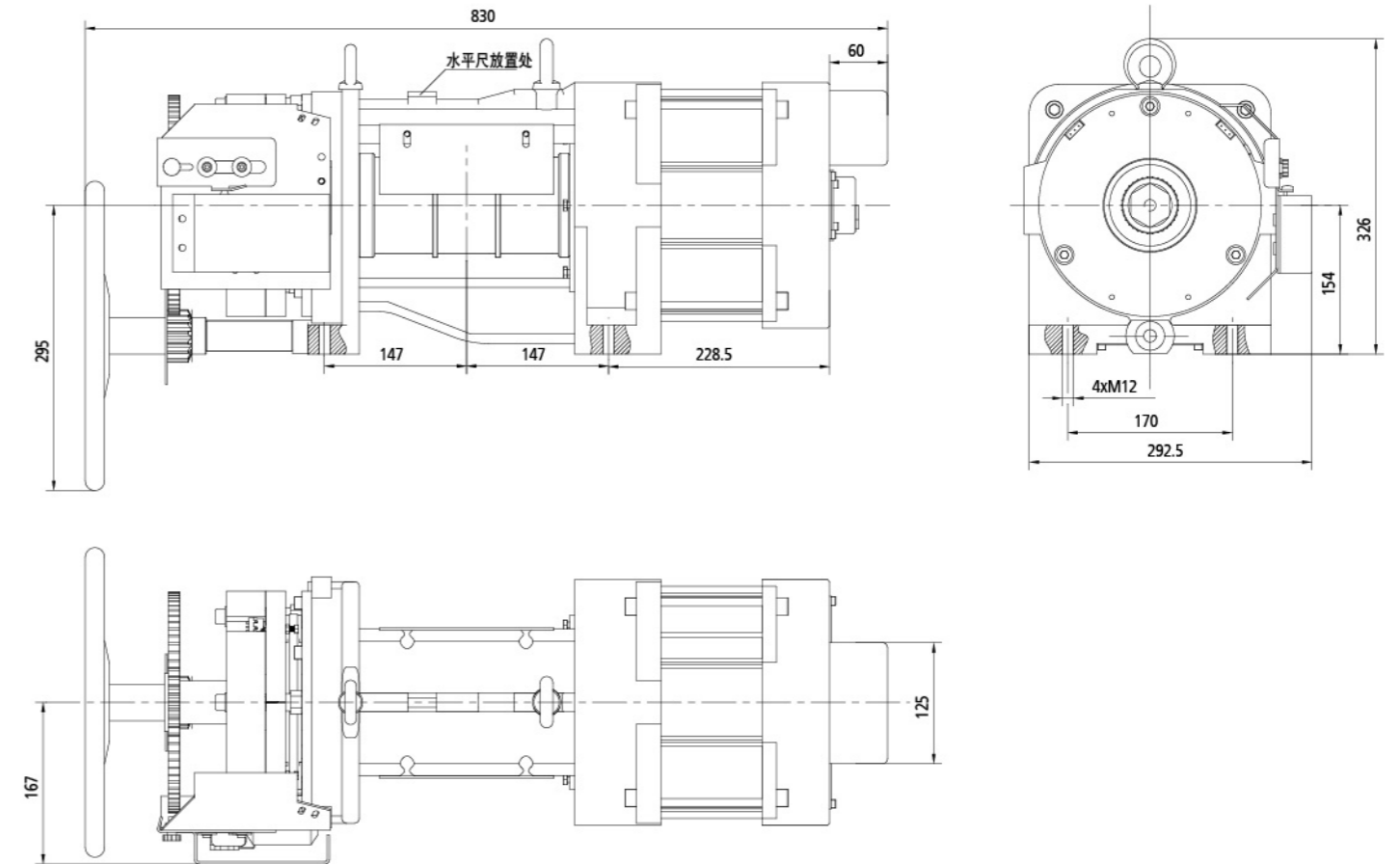


许用径向载荷 Max. axle load	2000kg
曳引机概算重量 Motor weight	130kg
工作制 Working duty	S5-40%ED
绝缘等级 Ins. class	155(F)
制动器型号及数量 Brake type	1只ZZD2-130

型号 Product type	曳引比 Traction Ratio	额定 载重 Load (kg)	电梯 额定速度 Elevator Speed (m/s)	额定转速 Rated speed (r/min)	额定转矩 Rated torque (N.m)	电机 Motor					制动器 Brake			曳引轮 Sheave	
						功率 Power (kW)	电压 Voltage (V)	电流 Current (A)	极对数 Poles (p)	频率 Frequency (Hz)	电流 Current (A)	电压 Voltage (V)	制动力矩 Brake torque (N.m)	节径 Diameter (mm)	槽型参数 Groove parameters
GETM2.0T-040/0450	2:1	450	0.4	153	75	1.2	220	4.9	5	12.8	0.95	DC 110	2x130	100	5+60+5+60+5+60+5 3槽
GETM2.0T-100/0450			1.0	382		2.9		11.2		31.8					
GETM2.0T-100/0630	2:1	630	1.0	382	105	4.0	220	15.4	5	31.8	0.95	DC 110	2x130	100	

注: 1、以上信息仅供参考, 具体参数请以ODF表为准; 2、曳引轮轴可根据客户系统进行非标; 3、极数=2倍极对数。  
Note: 1. Above parameters for information only, final parameters shall be as per ODF. 2. The sheave axle can be tailor-according to customer's requirement.

## 外形尺寸图 Overall Dimensions



注: 1、本机分为有机房及无机房主机两种状态;  
2、以上图纸为右置, 左置与上图对称布置。

Remarks:  
1. This machine is suitable for MR and MRL.  
2. The above drawing is for left-side layout, Left-side layout and above drawing in symmetric distribution.

# GETM3.5T

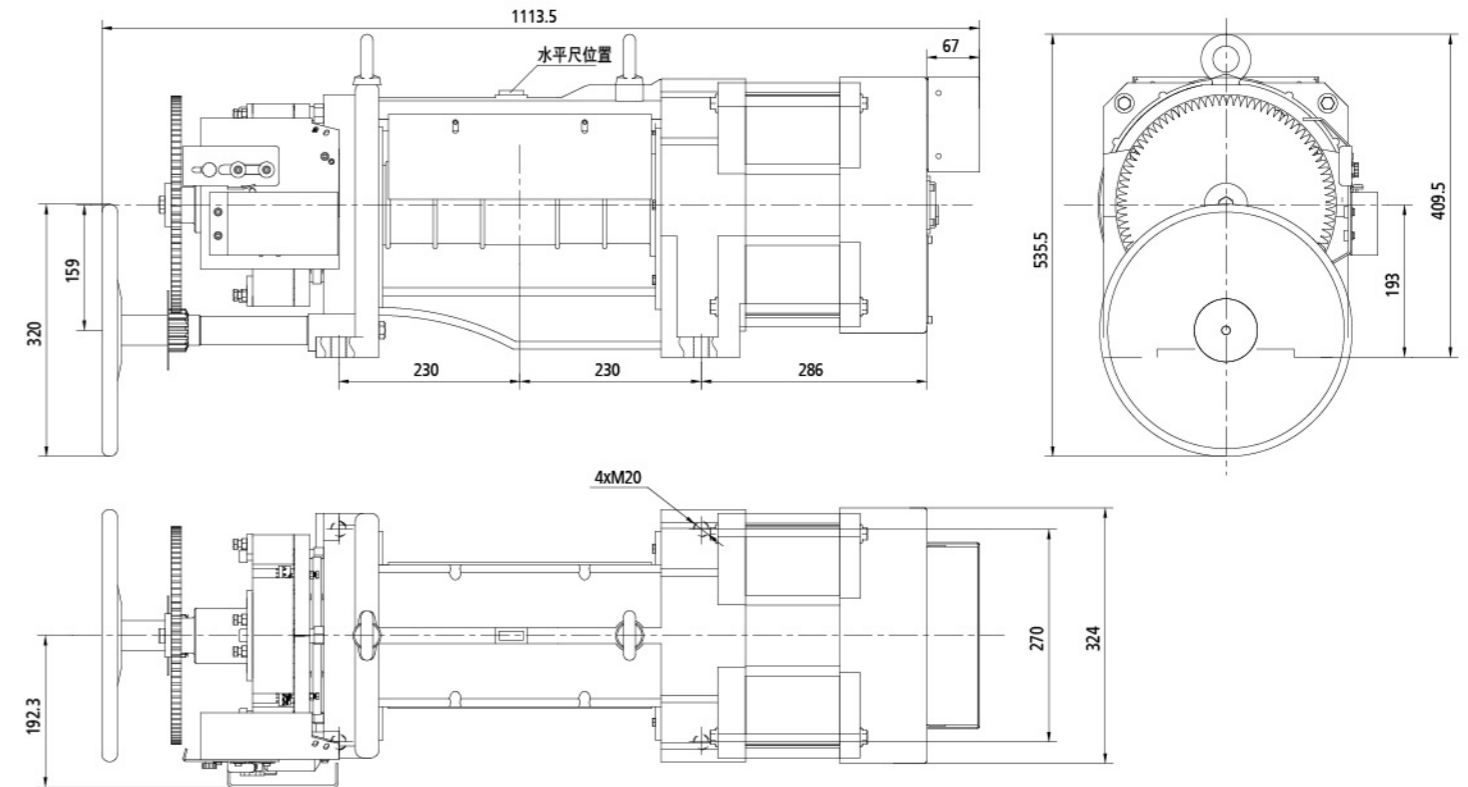


许用径向载荷 Max. axle load	3500kg
曳引机概算重量 Motor weight	310kg
工作制 Working duty	S5-40%ED
绝缘等级 Ins. class	155(F)
制动器型号及数量 Brake type	1只ZZD2-340

型号 Product type	曳引比 Traction Ratio	额定 载重 Load (kg)	电梯 额定速度 Elevator Speed (m/s)	额定转速 Rated speed (r/min)	额定转矩 Rated torque (N.m)	电机 Motor					制动器 Brake			曳引轮 Sheave	
						功率 Power (kW)	电压 Voltage (V)	电流 Current (A)	极对数 Poles (p)	频率 Frequency (Hz)	电流 Current (A)	电压 Voltage (V)	制动力矩 Brake torque (N.m)	节径 Diameter (mm)	槽型参数 Groove parameters
GETM3.5T-100/0800	2:1	800	1.0	382	134	5.3	340	14.0	6	38.2	1.2	DC 110	2x330	100	5+55+5+55+5+90+55+5+55+5 5槽
GETM3.5T-150/0800			1.5	573		8		18.9		57.3					
GETM3.5T-175/0800			1.75	669		9		20.3		66.9					
GETM3.5T-100/1000	2:1	1000	1.0	382	167	6.7	340	16.0	6	38.2	1.2	DC 110	2x330	100	
GETM3.5T-150/1000			1.5	573		10		23.2		57.3					
GETM3.5T-175/1000			1.75	669		11.7		27.8		66.9					
GETM3.5T-100/1050	2:1	1050	1.0	382	175	7	340	16.5	6	38.2	1.2	DC 110	2x330	100	
GETM3.5T-150/1050			1.5	573		10.5		24.2		57.3					
GETM3.5T-175/1050			1.75	669		12.3		28.7		66.9					

注: 1. 以上信息仅供参考, 具体参数请以ODF表为准; 2. 曳引轮轴可根据客户系统进行非标; 3. 极数=2倍极对数。  
 Note: 1. Above parameters for information only, final parameters shall be as per ODF. 2. The sheave axle can be tailor-according to customer's requirement.

## 外形尺寸图 Overall Dimensions



注: 1. 本机型分为有机房及无机房主机两种状态;  
 2. 以上图纸为右置, 左置与上图对称布置。

Remarks:  
 1. This machine is suitable for MR and MRL.  
 2. The above drawing is for left-side layout, Left-side layout and above drawing in symmetric distribution.

# GETM5.0T

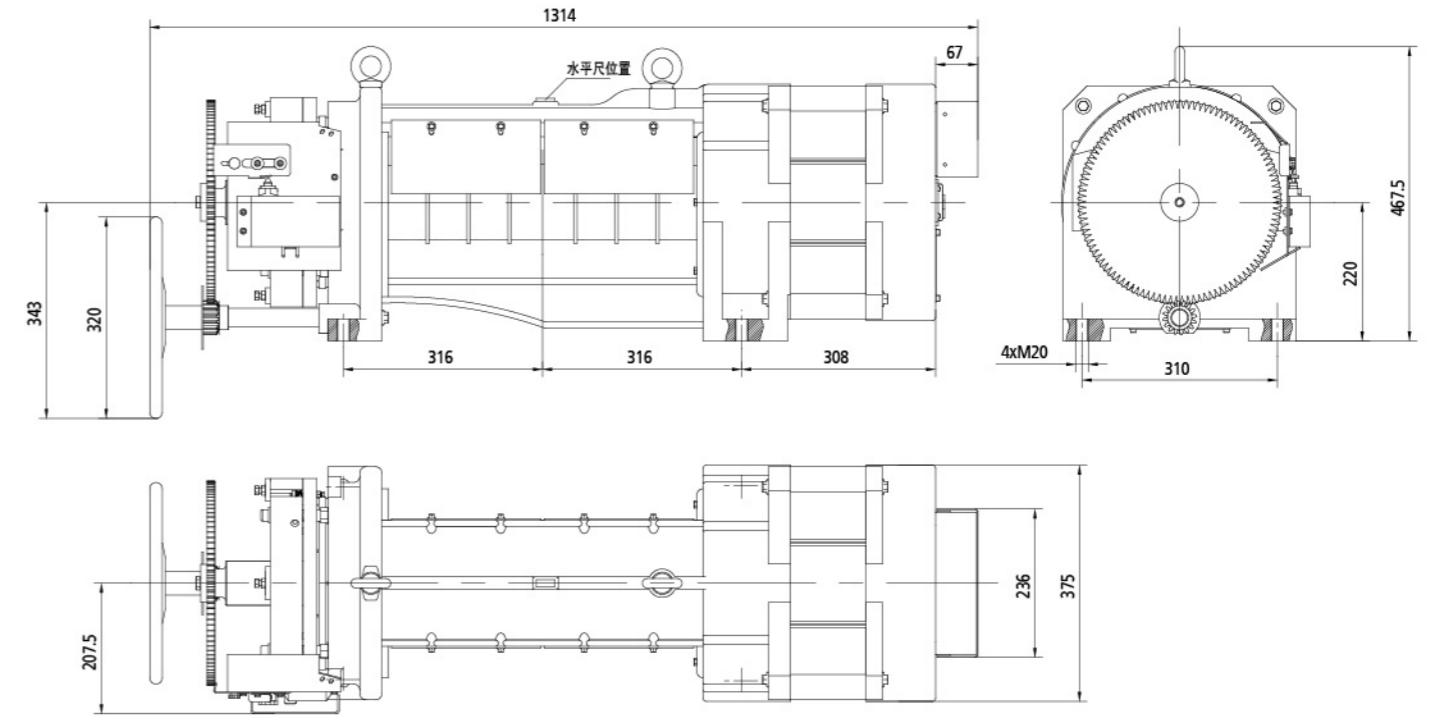


许用径向载荷 Max. axle load	5000kg
曳引机概算重量 Motor weight	载重1600kg时为450kg, 其余410kg
工作制 Working duty	S5-40%ED
绝缘等级 Ins. class	155(F)
制动器型号及数量 Brake type	1只ZZD2-480

型号 Product type	曳引比 Traction Ratio	额定 载重 Load (kg)	电梯 额定速度 Elevator Speed (m/s)	额定转速 Rated speed (r/min)	额定转矩 Rated torque (N.m)	电机 Motor					制动器 Brake			曳引轮 Sheave	
						功率 Power (kW)	电压 Voltage (V)	电流 Current (A)	极对数 Poles (p)	频率 Frequency (Hz)	电流 Current (A)	电压 Voltage (V)	制动力矩 Brake torque (N.m)	节径 Diameter (mm)	槽型参数 Groove parameters
GETM5.0T-100/1150	2:1	1150	1.0	318	230	7.7	340	17.5	6	31.8	1.45	DC 110	2x480	120	5+60+5+60+5+60+5+100+5 +60+5+60+5+60+5 7槽
GETM5.0T-150/1150			1.5	478		11.6		26.8		47.8					
GETM5.0T-175/1150			1.75	557		13.5		30.5		55.7					
GETM5.0T-100/1350	2:1	1350	1.0	318	270	9	340	20.4	6	31.8	1.45	DC 110	2x480	120	
GETM5.0T-150/1350			1.5	478		13.5		30.1		47.8					
GETM5.0T-175/1350			1.75	557		15.8		37.6		55.7					
GETM5.0T-100/1600	2:1	1600	1.0	318	321	10.7	340	24.9	6	31.8	1.45	DC 110	2x480	120	
GETM5.0T-150/1600			1.5	478		16		34.6		47.8					
GETM5.0T-175/1600			1.75	557		18.7		39.0		55.7					

注: 1. 以上信息仅供参考, 具体参数请以ODF表为准; 2. 曳引轮轴可根据客户系统进行非标; 3. 极数=2倍极对数。  
 Note: 1. Above parameters for information only, final parameters shall be as per ODF. 2. The sheave axle can be tailor-according to customer's requirement.

## 外形尺寸图 Overall Dimensions



注: 1. 本机分为有机房及无机房主机两种状态;  
 2. 以上图纸为右置, 左置与上图对称布置。

Remarks:  
 1. This machine is suitable for MR and MRL.  
 2. The above drawing is for left-side layout, Left-side layout and above drawing in symmetric distribution.



## 家用梯/小载重主机系列 For Home Lifts & Small Lifts

该系列主机运用先进的电磁方案设计和结构设计，使主机精致小巧，结构紧凑，性能更为优异，有效节省建筑空间。产品运行时噪音低，为用户创造静谧舒适的环境，广泛应用于家用梯、别墅梯和无机房客梯等。

Advanced electromagnetic design and structural design is applied to this series of machine. Its mini-size, compact structure and even-better performance can effectively reduce construction's size. Its quietness creates comfortable riding experience. This series of machine is widely used for home lift, villa lift and small MRL passenger elevator.

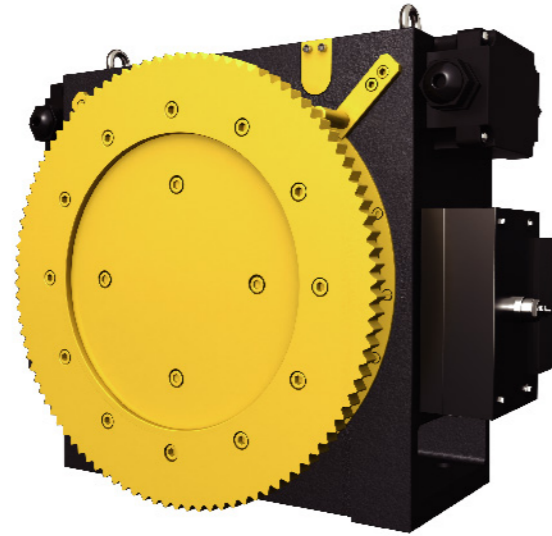


采用自主研发的高性能磁钢材料，并设置过热安全保护装置，延长电机使用寿命  
In-house made high-performance NdFeB magnet brings longer life for the motor.



噪音低，保持精巧的同时不失优异的性能  
Low noise level, good balance between reduced size and excellent performance.

# GETM1.5



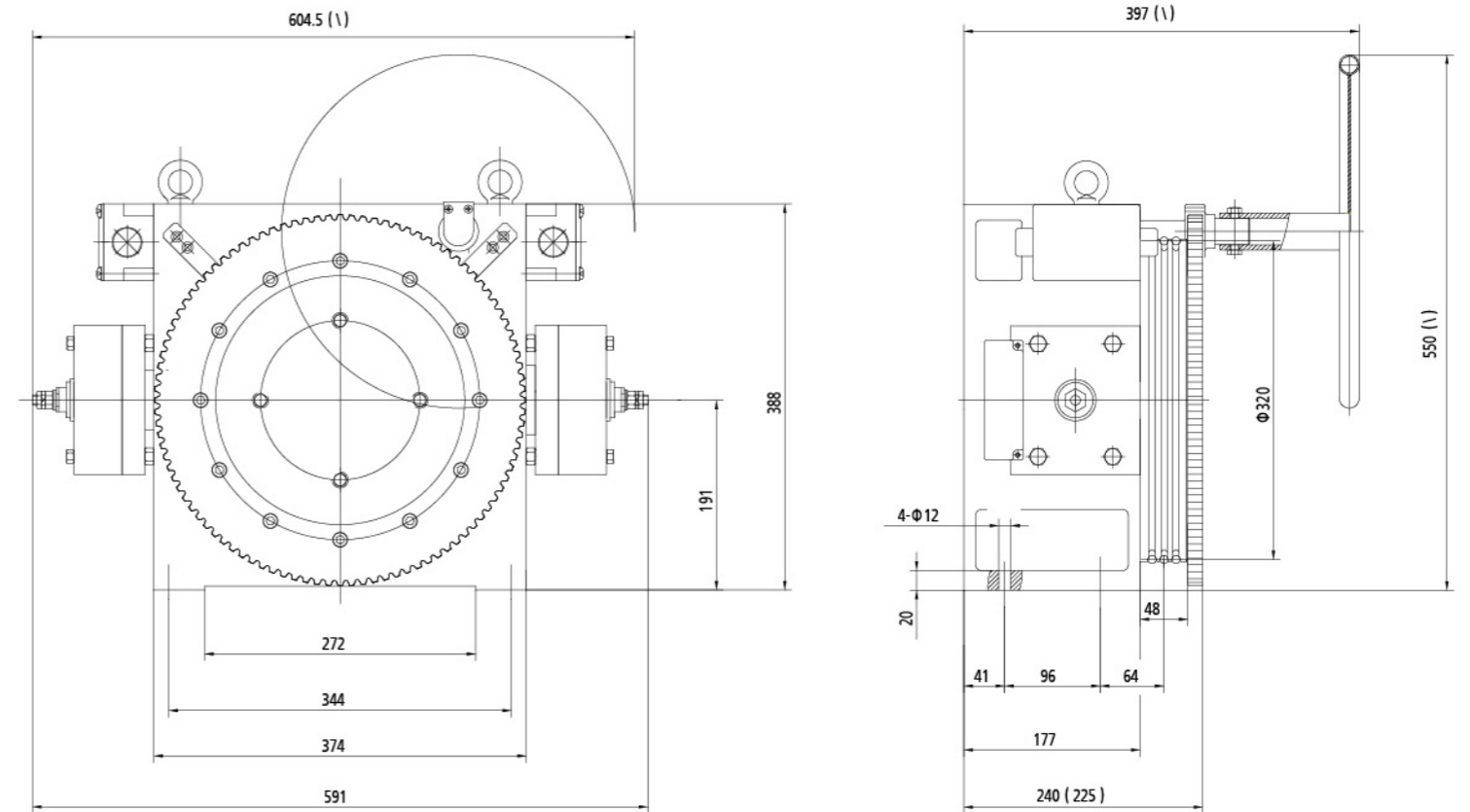
许用径向载荷 Max. axle load	1500kg
曳引机概算重量 Motor weight	180kg
工作制 Working duty	S5-40%ED
绝缘等级 Ins. class	155(F)
制动器型号及数量 Brake type	2只DZD1-351

规格表 Specification table

型号 Product type	曳引比 Traction Ratio	额定载重 Load (kg)	电梯额定速度 Elevator Speed (m/s)	额定转速 Rated speed (r/min)	额定转矩 Rated torque (N.m)	电机 Motor					制动器 Brake			曳引轮 Sheave				
						功率 Power (kW)	电压 Voltage (V)	电流 Current (A)	极对数 Poles (p)	频率 Frequency (Hz)	电流 Current (A)	电压 Voltage (V)	制动力矩 Brake torque (N.m)	绳径 Diameter (mm)	绳槽 Rope rxd	β角 β angle	γ角 γ angle	槽距 Groove pitch (mm)
GETM1.5-100/0400	2:1	400	1.0	119	233	2.9	340	6.8	12	23.8	2x0.9	DC110	2x270	320	3xø8	96°	35°	12

注: 1. 以上信息仅供参考, 具体参数请以ODF表为准; 2. 绳槽数量、β角、γ角可根据客户系统进行非标; 3. 极数=2倍极对数。  
Note: 1. Above parameters for information only, final parameters shall be as per ODF. 2. Quantity of rope groove number, β angle and γ angle can be tailor-made according to customer's requests.

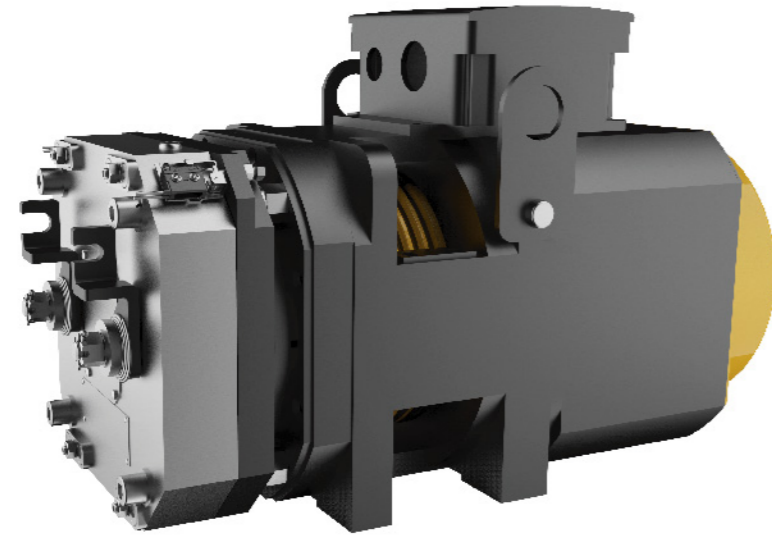
## 外形尺寸图 Overall Dimensions



- 注: 1. 本机型分为有盘车和无盘车两种状态;  
2. 括号里数值表示无盘车时尺寸;  
3. 可配备远程松闸装置, 松闸线长4~10米。

- Remarks:  
1. Both hand wind and hand wind-less types are available.  
2. The data in the bracket is for the size of hand wind-less type.  
3. Remote release device is available, the length of releasing wire ranges 4~10m.

# GETM1.5D

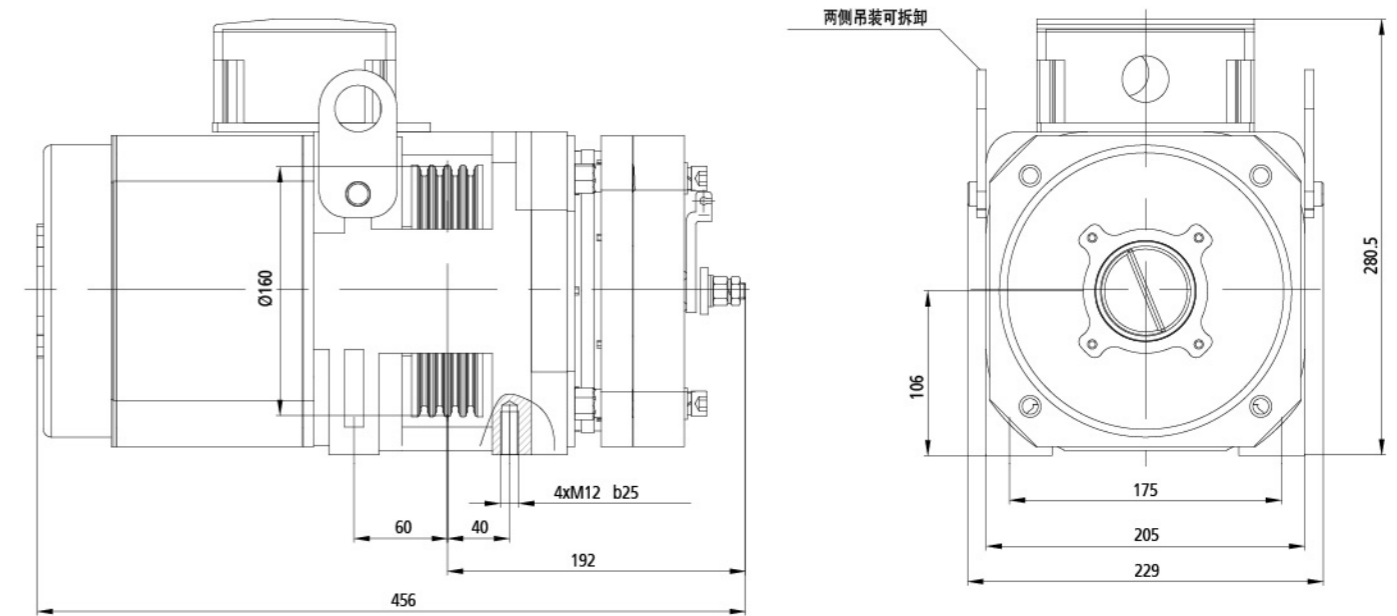


许用径向载荷 Max. axle load	1500kg
曳引机概算重量 Motor weight	80kg
工作制 Working duty	S5-40%ED
绝缘等级 Ins. class	155(F)
制动器型号及数量 Brake type	1只ZZD2-135

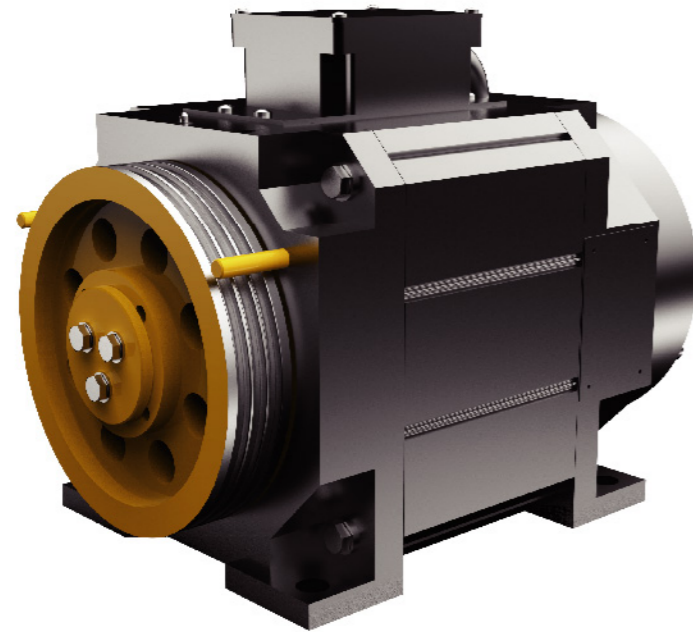
型号 Product type	曳引比 Traction Ratio	额定 载重 Load (kg)	电梯 额定速度 Elevator Speed (m/s)	额定转速 Rated speed (r/min)	额定转矩 Rated torque (N.m)	电机 Motor					制动器 Brake		曳引轮 Sheave					
						功率 Power (kW)	电压 Voltage (V)	电流 Current (A)	极对数 Poles (p)	频率 Frequency (Hz)	电流 Current (A)	电压 Voltage (V)	制动力矩 Brake torque (N.m)	节径 Diameter (mm)	绳槽 Rope rxd	β角 β angle	γ角 γ angle	槽距 Groove pitch (mm)
GETM1.5D	2:1	400	0.4	96	104.5	1.0	220	7	5	8.0	1.3	DC 110	2x135	160	4xø6	90°	30°	10

注: 1. 以上信息仅供参考, 具体参数请以ODF表为准; 2. 绳槽数量、β角、γ角可根据客户系统进行非标; 3. 极数=2倍极对数。  
 Note: 1. Above parameters for information only, final parameters shall be as per ODF. 2. Quantity of rope groove number, β angle and γ angle can be tailor-made according to customer's requests.

## 外形尺寸图 Overall Dimensions

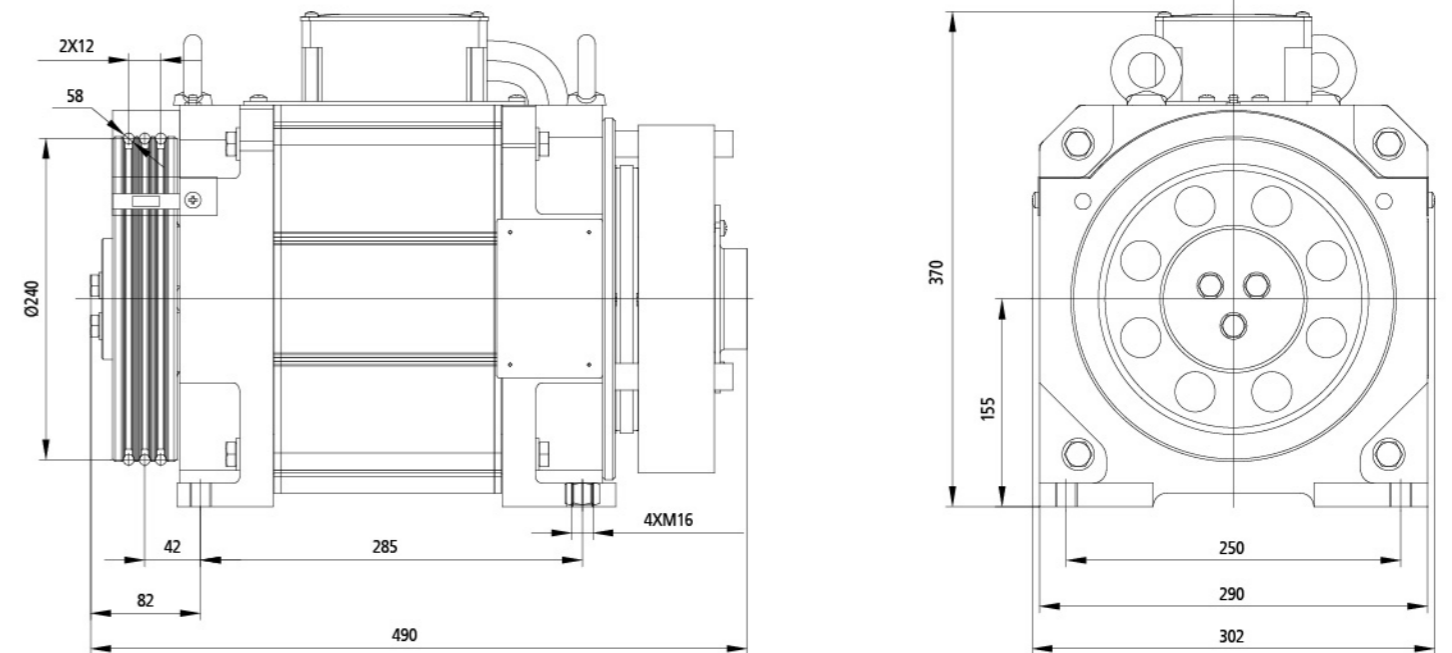


# GETM2.0D



许用径向载荷 Max. axle load	2000kg
曳引机概算重量 Motor weight	200kg
工作制 Working duty	S5-40%ED
绝缘等级 Ins. class	155(F)
制动器型号及数量 Brake type	1只ZZD2-210

## 外形尺寸图 Overall Dimensions



型号 Product type	曳引比 Traction Ratio	额定 载重 Load (kg)	电梯 额定速度 Elevator Speed (m/s)	额定转速 Rated speed (r/min)	额定转矩 Rated torque (N.m)	电机 Motor					制动器 Brake			曳引轮 Sheave				
						功率 Power (kW)	电压 Voltage (V)	电流 Current (A)	极对数 Poles (p)	频率 Frequency (Hz)	电流 Current (A)	电压 Voltage (V)	制动力矩 Brake torque (N.m)	节径 Diameter (mm)	绳槽 Rope nxd	β角 β angle	γ角 γ angle	槽距 Groove pitch (mm)
GETM2.0D	2:1	400	0.4	64	164	1.1	220	5.6	10	10.67	1.65	DC 110	2x210	240	3xø8	90°	35°	12

注: 1. 以上信息仅供参考, 具体参数请以ODF表为准; 2. 绳槽数量、β角、γ角可根据客户系统进行非标; 3. 极数=2倍极对数。  
 Note: 1. Above parameters for information only, final parameters shall be as per ODF. 2. Quantity of rope groove number, β angle and γ angle can be tailor-made according to customer's requests.

# GETM1.9D

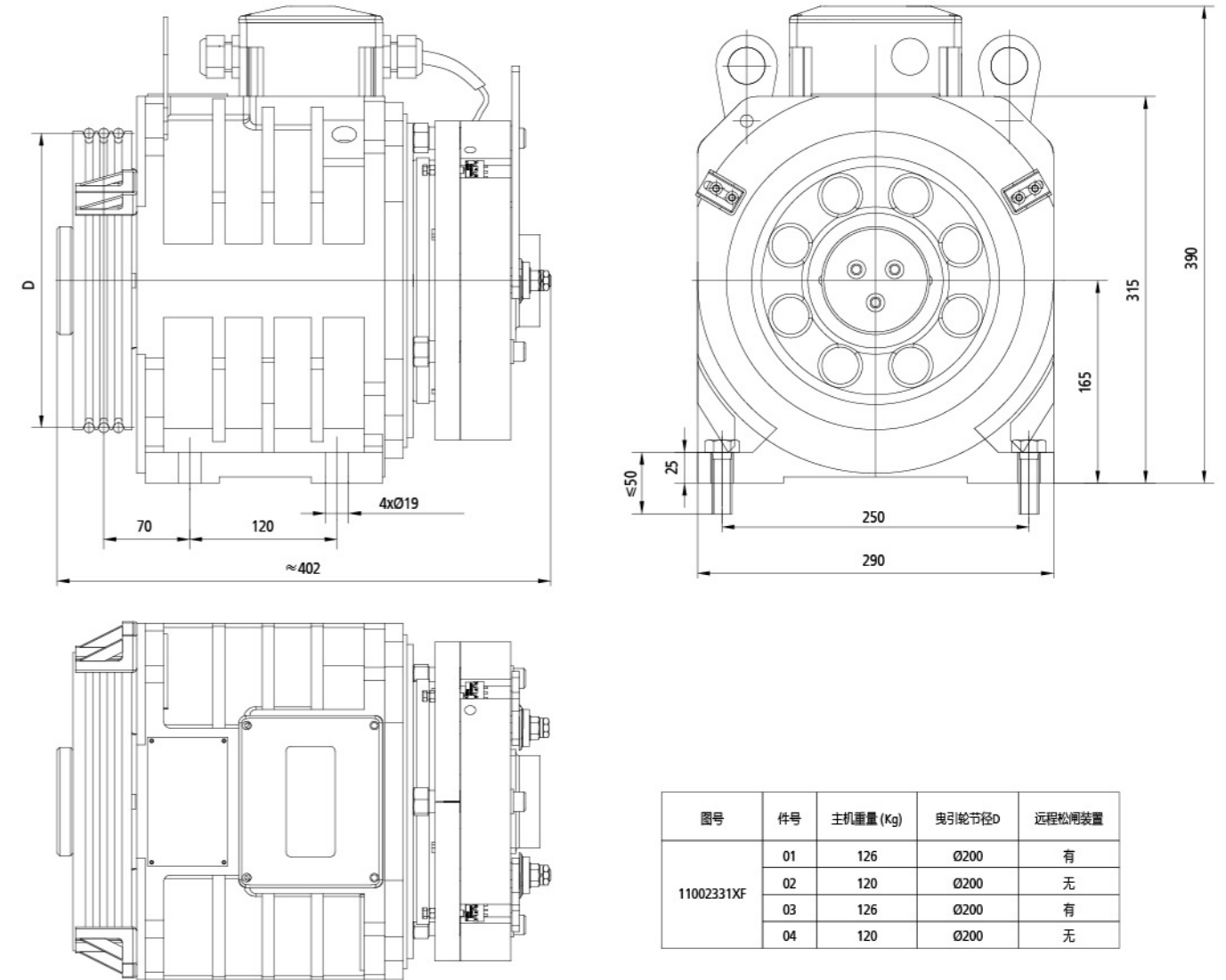


许用径向载荷 Max. axle load	1900kg
曳引机概算重量 Motor weight	126kg
工作制 Working duty	S5-40%ED
绝缘等级 Ins. class	155(F)
制动器型号及数量 Brake type	1只ZZD2-210

型号 Product type	曳引比 Traction Ratio	额定载重 Load (kg)	电梯额定速度 Elevator Speed (m/s)	额定转速 Rated speed (r/min)	额定转矩 Rated torque (N.m)	电机 Motor					制动器 Brake			曳引轮 Sheave				
						功率 Power (kW)	电压 Voltage (V)	电流 Current (A)	极对数 Poles (p)	频率 Frequency (Hz)	电流 Current (A)	电压 Voltage (V)	制动力矩 Brake torque (N.m)	节径 Diameter (mm)	绳槽 Rope rxd	β角 β angle	γ角 γ angle	槽距 Groove pitch (mm)
GETM1.9D	2:1	400	0.4	76.5	134	1.1	220	6.9	16	20.4	1.65	DC 110	2x210	200	4xø8	90°	35°	12
	2:1	400	0.4	64	160	1.1	220	8.3	16	17.0	1.65	DC 110	2x210	240	3xø8	90°	35°	12

注: 1. 以上信息仅供参考, 具体参数请以ODF表为准; 2. 绳槽数量、β角、γ角可根据客户系统进行非标; 3. 极数=2倍极对数。  
 Note: 1. Above parameters for information only, final parameters shall be as per ODF. 2. Quantity of rope groove number, β angle and γ angle can be tailor-made according to customer's requests.

## 外形尺寸图 Overall Dimensions





## 高速主机系列 For High-Speed Elevators

此系列主机拥有超高载重量和10m/s的最大额定速度，可广泛适用于高速、大载重电梯的高层建筑，单绕和复绕的结构均适用。该系列主机运用内转子双支撑结构，先进技术保证了产品运行的高效平稳。产品采用进口制动器，自制高性能磁钢和国际知名配件，其温升和噪音都远远低于行业标准。

This series of traction machine is applicable for elevators with large rated load and Max. rated speed at 10m/s which is installed in ultra high-rise buildings. Both single wrap and double wrap is available. Advanced technologies is such as internal rotor & dual supporting structure is adopted to ensure high efficiency and smooth operation. The adoption of imported brakes, in-house made high-performance magnets and other famous-brand parts guarantees its temperature rising and noise level much lower than the level required by relevant standards.



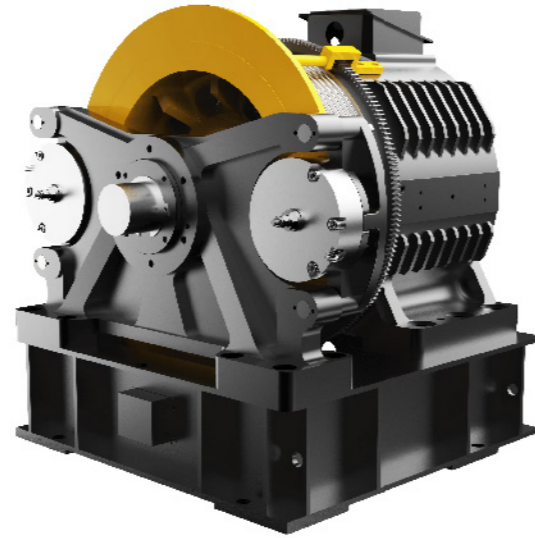
钳式制动器，动作灵敏，运行快速平稳，特殊的工艺保证制动可靠、制动力矩稳定  
Imported brake, swift and sensitive in response, smooth in operation, reliable braking guaranteed by unique fabrication techniques, stable braking torque.



超高载重量和高速运行，更适合高端用户的需求  
Ultra large rated load and high rated speed, ideal choice for high-end customers.

# GETM10C

许用径向载荷 Max. axle load	10000kg
曳引机概算重量 Motor weight	960kg
工作制 Working duty	S5-40%ED
绝缘等级 Ins. class	155(F)
制动器型号及数量 Brake type	2只QZD1-A-B0

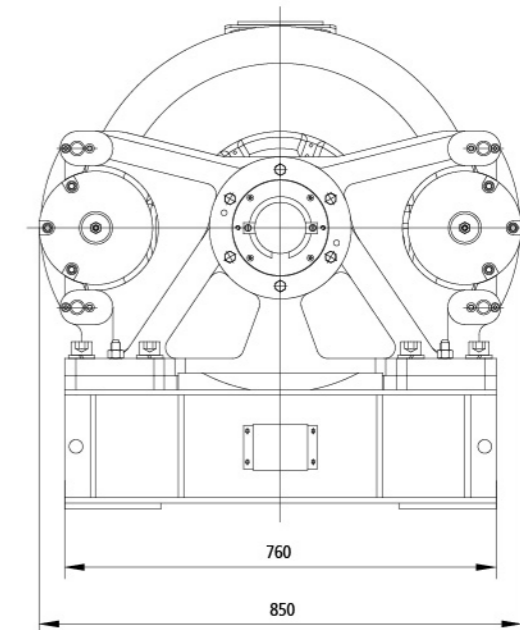
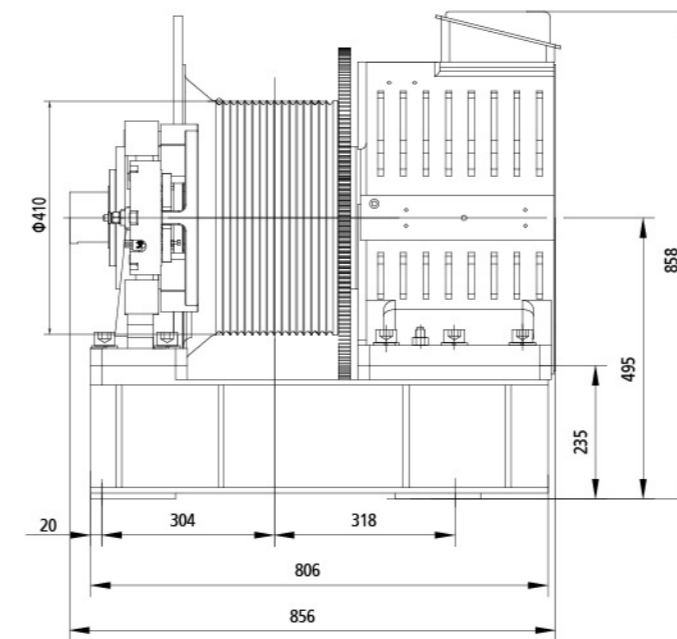
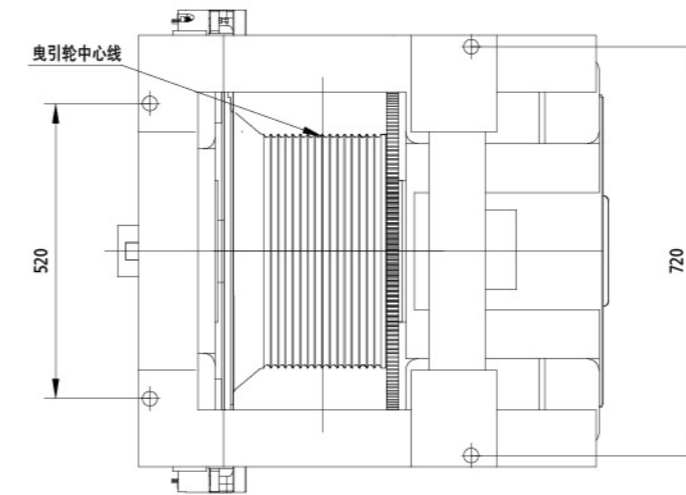


规格表 Specification table

型号 Product type	曳引比 Traction Ratio	额定 载重 Load (kg)	电梯 额定速度 Elevator Speed (m/s)	额定转速 Rated speed (r/min)	额定转矩 Rated torque (N.m)	电机 Motor				制动器 Brake			曳引轮 Sheave				
						功率 Power (kW)	电压 Voltage (V)	电流 Current (A)	极对数 Poles (p)	频率 Frequency (Hz)	电流 Current (A)	电压 Voltage (V)	制动力矩 Brake torque (N.m)	节径 Diameter (mm)	绳槽 Rope rxd	β角 β angle	γ角 γ angle
GETM10C-250/1600	2:1	1600	2.5	233	1004	24.5	340	58	12	46.6	2x1.55	DC90/40V	1570	410	14xø10	半圆槽 Semi-Circular Groove	12.7
GETM10C-200/1600			2.0	186		19.6		45		37.2							
GETM10C-175/1600			1.75	163		17.2		38		32.6							
GETM10C-100/1600			1.0	93		9.8		22		18.6							
GETM10C-250/1350	2:1	1350	2.5	233	848	20.7	340	46	12	46.6	2x1.55	DC90/40V	1570	410	14xø10	半圆槽 Semi-Circular Groove	12.7
GETM10C-200/1350			2.0	186		16.5		34		37.2							
GETM10C-175/1350			1.75	163		14.5		30		32.6							
GETM10C-100/1350			1.0	93		8.3		17		18.6							
GETM10C-300/1150	2:1	1150	3.0	280	722	21.1	340	48	12	56.0	2x1.55	DC90/40V	1570	410	14xø10	半圆槽 Semi-Circular Groove	12.7
GETM10C-250/1150			2.5	233		17.6		37		46.6							
GETM10C-200/1150			2.0	186		14.1		29		37.2							
GETM10C-175/1150			1.75	163		12.3		26		32.6							
GETM10C-100/1150			1.0	93		7.0		15		18.6							

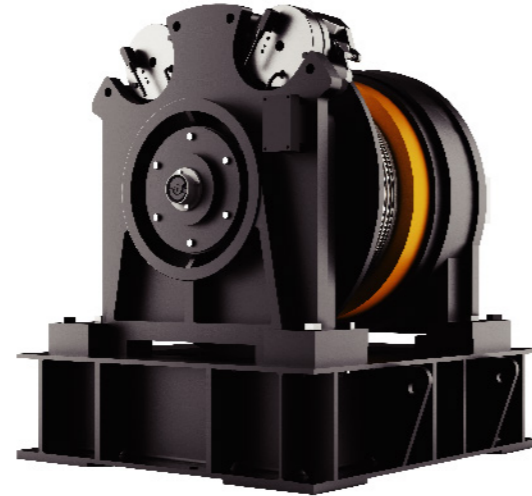
注: 1. 以上信息仅供参考, 具体参数请以ODF表为准; 2. 绳槽数量、β角、γ角可根据客户系统进行非标; 3. 极数=2倍极对数。  
Note: 1. Above parameters for information only, final parameters shall be as per ODF. 2. Quantity of rope groove number, β angle and γ angle can be tailor-made according to customer's requests.

外形尺寸图 Overall Dimensions



# GETM12C (复绕 Double Wrapping)

许用径向载荷 Max. axle load	12000kg
曳引机概算重量 Motor weight	1460kg
工作制 Working duty	S5-40%ED
绝缘等级 Ins. class	155(F)
制动器型号及数量 Brake type	2只EC-5415SM-C

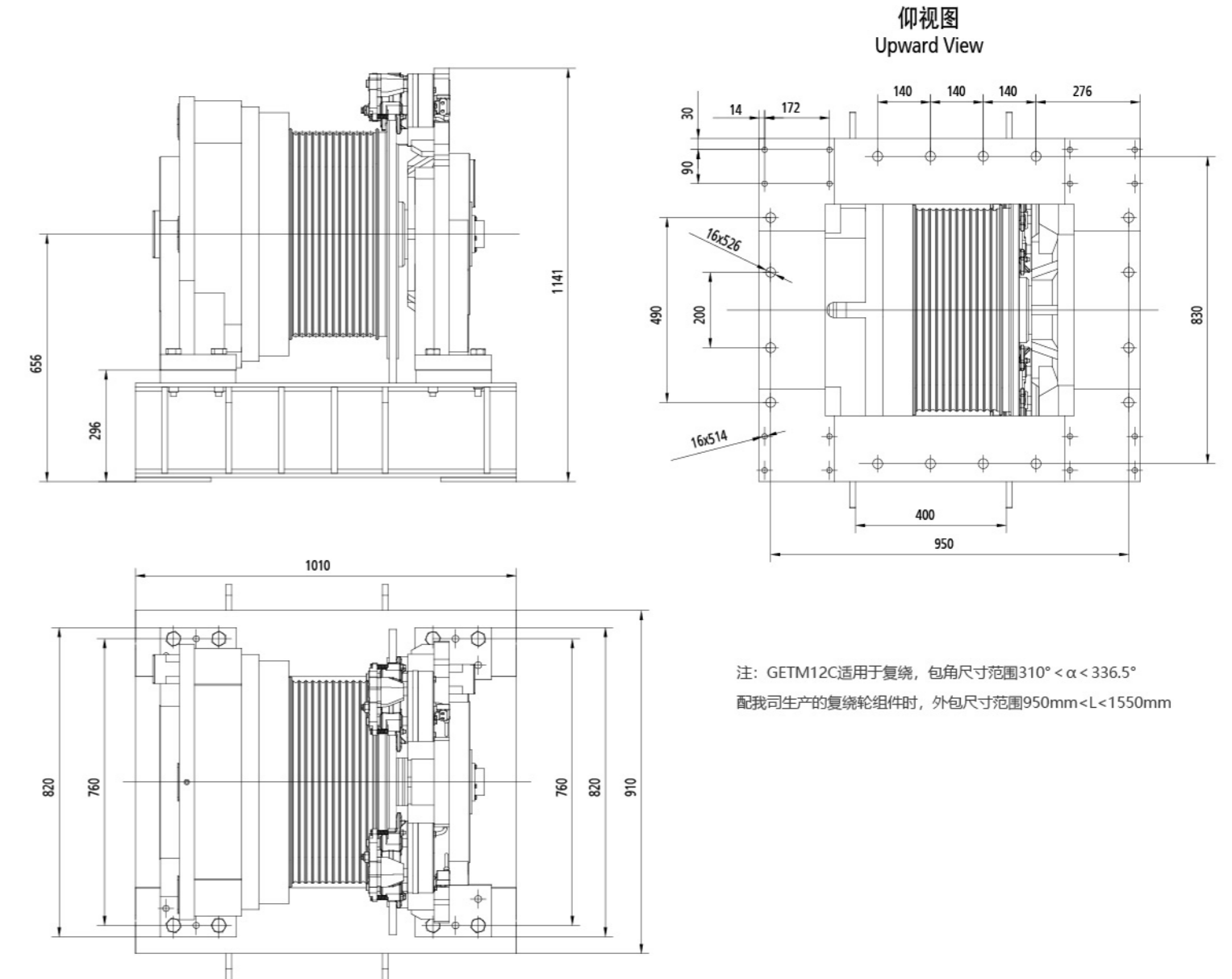


规格表 Specification table

型号 Product type	曳引比 Traction Ratio	额定载重 Load (kg)	电梯额定速度 Elevator Speed (m/s)	额定转速 Rated speed (r/min)	额定转矩 Rated torque (N.m)	电机 Motor				制动器 Brake			曳引轮 Sheave				
						功率 Power (kW)	电压 Voltage (V)	电流 Current (A)	极对数 Poles (p)	频率 Frequency (Hz)	电流 Current (A)	电压 Voltage (V)	制动力矩 Brake torque (N.m)	节径 Diameter (mm)	绳槽 Rope rxd	β角 β angle	γ角 γ angle
GETM12C-400/1600	2:1 复绕 Double Wrapping	1600	4.0	283	1505	44	513	65	16	75.5	2x3	DC 90	2x1856	540	12xø13	半圆槽 Semi-Circular Groove	18
340			91	66													
340			80	56.5													
GETM12C-350/1600	2:1 复绕 Double Wrapping	1600	3.5	248	1505	39	513	55	16	66	2x3	DC 90	2x1856	540	12xø13	半圆槽 Semi-Circular Groove	18
340			80	56.5													
340			71	56.5													
GETM12C-300/1600	2:1 复绕 Double Wrapping	1600	3.0	212	1505	33	513	48	16	56.5	2x3	DC 90	2x1856	540	12xø13	半圆槽 Semi-Circular Groove	18
340			71	56.5													
340			57	56.5													
GETM12C-400/1350	2:1 复绕 Double Wrapping	1350	4.0	283	1272	37	513	53	16	75.5	2x3	DC 90	2x1856	540	12xø13	半圆槽 Semi-Circular Groove	18
340			77	66													
340			70	56.5													
GETM12C-350/1350	2:1 复绕 Double Wrapping	1350	3.5	248	1272	33	513	47	16	66	2x3	DC 90	2x1856	540	12xø13	半圆槽 Semi-Circular Groove	18
340			70	56.5													
340			57	56.5													
GETM12C-300/1350	2:1 复绕 Double Wrapping	1350	3.0	212	1272	28	513	40	16	56.5	2x3	DC 90	2x1856	540	12xø13	半圆槽 Semi-Circular Groove	18
340			57	56.5													
340			49	56.5													
GETM12C-400/1150	2:1 复绕 Double Wrapping	1150	4.0	283	1080	32	513	46	16	75.5	2x3	DC 90	2x1856	540	12xø13	半圆槽 Semi-Circular Groove	18
340			65	66													
340			57	56.5													
GETM12C-350/1150	2:1 复绕 Double Wrapping	1150	3.5	248	1080	28	513	40	16	66	2x3	DC 90	2x1856	540	12xø13	半圆槽 Semi-Circular Groove	18
340			57	56.5													
340			49	56.5													
GETM12C-300/1150	2:1 复绕 Double Wrapping	1150	3.0	212	1080	24	513	34	16	56.5	2x3	DC 90	2x1856	540	12xø13	半圆槽 Semi-Circular Groove	18
340			49	56.5													
340			49	56.5													

注: 1. 以上信息仅供参考, 具体参数请以ODF表为准; 2. 绳槽数量、β角、γ角可根据客户系统进行非标; 3. 极数=2倍极对数。  
 Note: 1. Above parameters for information only, final parameters shall be as per ODF. 2. Quantity of rope groove number, β angle and γ angle can be tailor-made according to customer's requests.

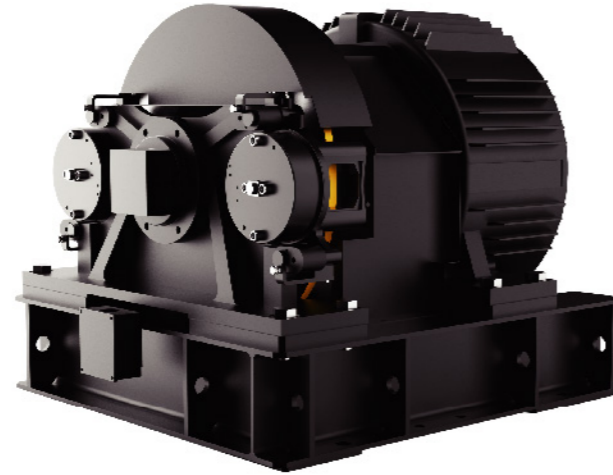
# 外形尺寸图 Overall Dimensions



注: GETM12C适用于复绕, 包角尺寸范围 $310^\circ < \alpha < 336.5^\circ$   
 配我司生产的复绕轮组件时, 外包尺寸范围 $950\text{mm} < L < 1550\text{mm}$

# GETM15C (单/复绕 Single / Double Wrapping)

许用径向载荷 Max. axle load	15000kg
曳引机概算重量 Motor weight	1500kg
工作制 Working duty	S5-40%ED
绝缘等级 Ins. class	155(F)
制动器型号及数量 Brake type	2只EC-4023EF-100R

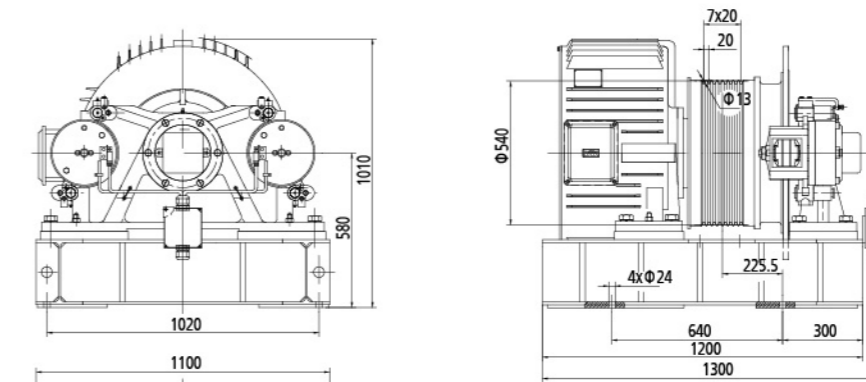


规格表 Specification table

型号 Product type	曳引比 Traction Ratio	额定载重 Load (kg)	电梯额定速度 Elevator Speed (m/s)	额定转速 Rated speed (r/min)	额定转矩 Rated torque (N.m)	电机 Motor					制动器 Brake			曳引轮 Sheave					
						功率 Power (kW)	电压 Voltage (V)	电流 Current (A)	极对数 Poles (p)	频率 Frequency (Hz)	电流 Current (A)	电压 Voltage (V)	制动力矩 Brake torque (N.m)	节径 Diameter (mm)	绳槽 Rope rxd	β角 β angle	γ角 γ angle	槽距 Groove pitch (mm)	
GETM15C-300/1350	2:1 复绕 Double Wrapping	1350	3.0	212	1220	27	340	58	12	42.4	2x2	DC125	2x2800	540	12xø13	半圆槽 Semi-Circular Groove	18		
GETM15C-350/1350			3.5	248		32									68		49.6	12xø13	18
GETM15C-400/1350			4	283		36									77		56.6	12xø13	18
GETM15C-300/1600		1600	3.0	212	32	68	42.4	12xø13	18										
GETM15C-350/1600			3.5	248	38	79	49.6	12xø13	18										
GETM15C-400/1600			4	283	43	90	56.6	12xø13	18										
GETM15C-300/2000	2000	3.0	212	40	84	42.4	12xø13	18											
GETM15C-350/2000		3.5	248	47	98	49.6	12xø13	18											
GETM15C-400/2000		4	283	54	113	56.6	12xø13	18											
GETM15C-100/4000	4:1 单绕 Single Wrapping	4000	1	142	1880	28	58	72	28	50	2x2	DC125	2x2800	540	8xø13	切口槽 V Groove	20		
GETM15C-175/4000			1.75	249		49									102		50	8xø13	20
GETM15C-100/5000			1	142		33									72		28	8xø13	20
GETM15C-175/5000			1.75	249		58									118		50	8xø13	20

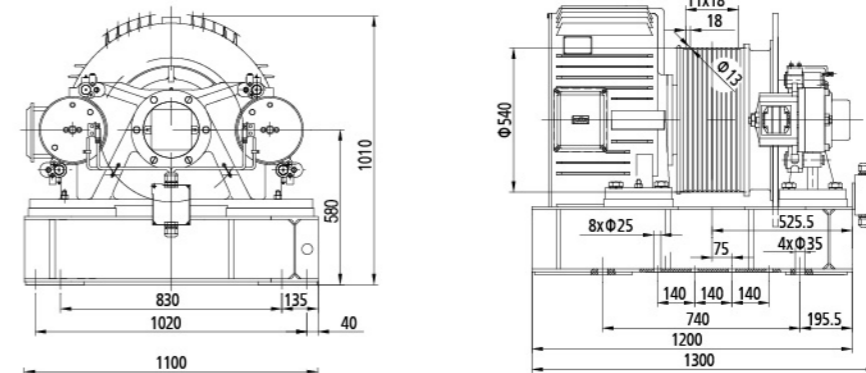
注: 1. 以上信息仅供参考, 具体参数请以ODF表为准; 2. 绳槽数量、β角、γ角可根据客户系统进行非标; 3. 极数=2倍极对数。  
 Note: 1. Above parameters for information only, final parameters shall be as per ODF. 2. Quantity of rope groove number, β angle and γ angle can be tailor-made according to customer's requests.

# 外形尺寸图 Overall Dimensions



单绕 Single Wrapping

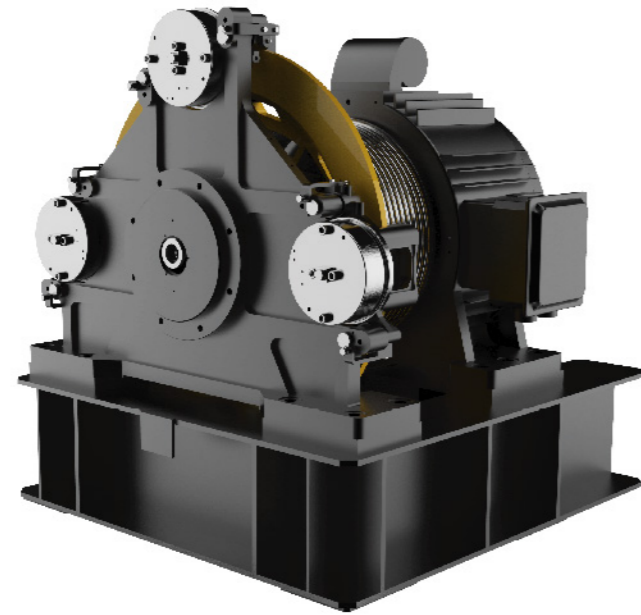
注: 外包尺寸范围: 540~700mm  
 Note: Overall Size Range: 540~700mm



复绕 Double Wrapping

注: 外包尺寸范围: 1000~1300mm  
 Note: Overall Size Range: 1000~1300mm

# GETM30C



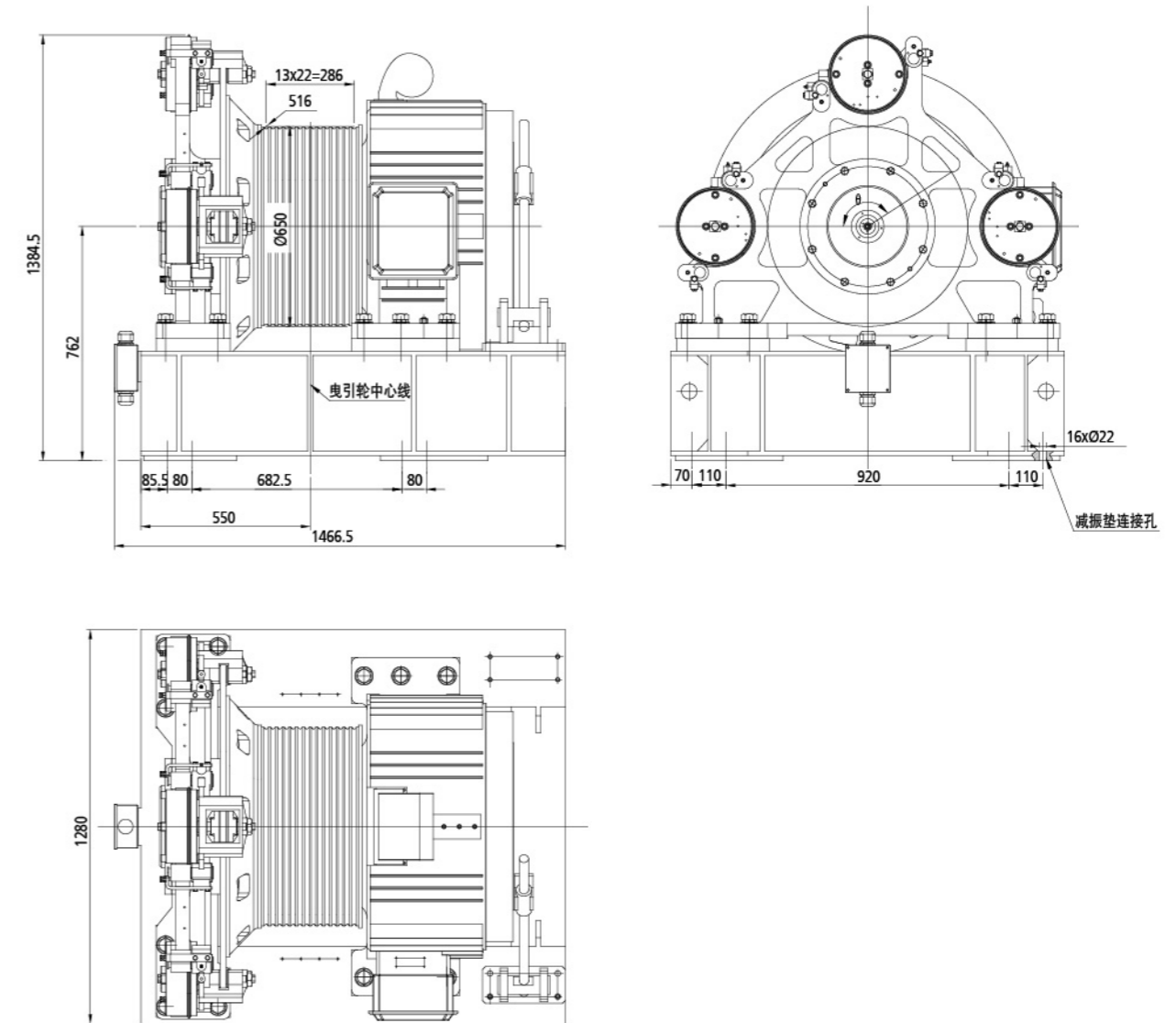
许用径向载荷 Max. axle load	30000kg
曳引机概算重量 Motor weight	3000kg
工作制 Working duty	S5-40%ED
绝缘等级 Ins. class	155(F)
制动器型号及数量 Brake type	3只EC-4023EF

规格表 Specification table

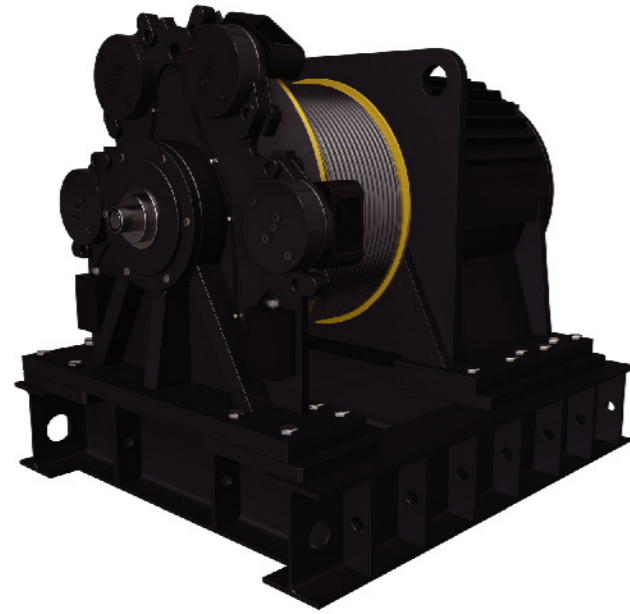
型号 Product type	曳引比 Traction Ratio	额定 载重 Load (kg)	电梯 额定速度 Elevator Speed (m/s)	额定转速 Rated speed (r/min)	额定转矩 Rated torque (N.m)	电机 Motor					制动器 Brake			曳引轮 Sheave			
						功率 Power (kW)	电压 Voltage (V)	电流 Current (A)	极对数 Poles (p)	频率 Frequency (Hz)	电流 Current (A)	电压 Voltage (V)	制动力矩 Brake torque (N.m)	节径 Diameter (mm)	绳槽 Rope nxd	β角 β angle	γ角 γ angle
GETM30C-500/2000	1:1	2000	5	147	4247	65.3	340	147	12	29.4	3x2	DC125	3x3700	650	7xø16	半圆槽 Semi-Circular Groove	22
GETM30C-600/2000			6	176		78.4		175		35.4							
GETM30C-700/2000			7	206		91.5		202		41.2							
GETM30C-500/1600	1:1	1600	5	147	3397	52.3	340	119	12	29.4	3x2	DC125	3x3700	650	7xø16	半圆槽 Semi-Circular Groove	22
GETM30C-600/1600			6	176		62.7		149		35.4							
GETM30C-700/1600			7	206		73.2		170		41.2							
GETM30C-500/1350	1:1	1350	5	147	2867	44.1	340	103	12	29.4	3x2	DC125	3x3700	650	7xø16	半圆槽 Semi-Circular Groove	22
GETM30C-600/1350			6	176		52.9		124		35.4							
GETM30C-700/1350			7	206		61.7		146		41.2							

注: 1. 以上信息仅供参考, 具体参数请以ODF表为准; 2. 绳槽数量、β角、γ角可根据客户系统进行非标; 3. 极数=2倍极对数。  
 Note: 1. Above parameters for information only, final parameters shall be as per ODF. 2. Quantity of rope groove number, β angle and γ angle can be tailor-made according to customer's requests.

# 外形尺寸图 Overall Dimensions



# GETM40C (复绕 Double Wrapping)



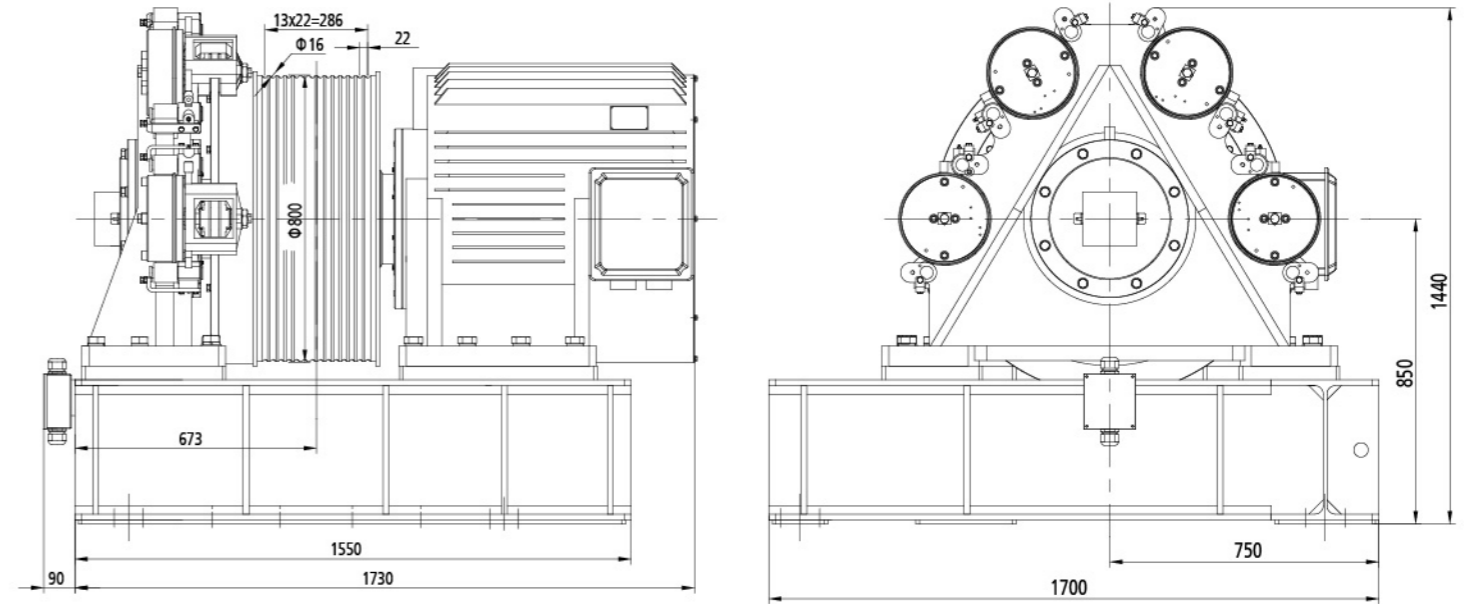
许用径向载荷 Max. axle load	40000kg
曳引机概算重量 Motor weight	4760kg
工作制 Working duty	S5-40%ED
绝缘等级 Ins. class	155(F)
制动器型号及数量 Brake type	4只4023-EF

规格表 Specification table

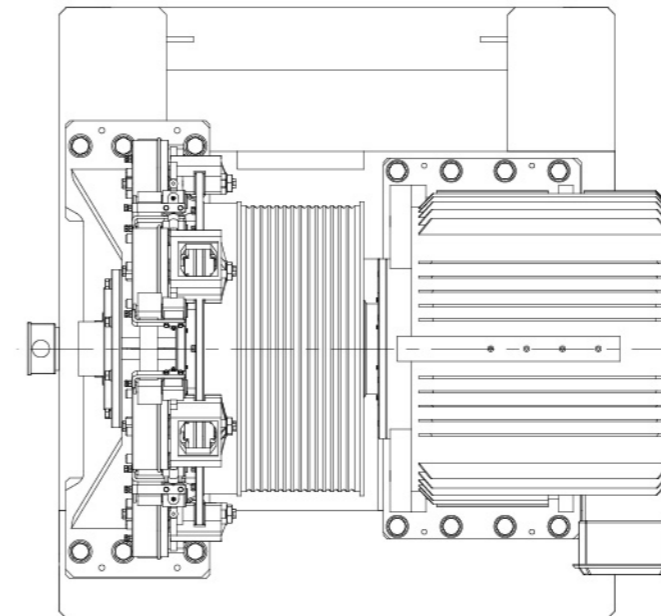
型号 Product type	曳引比 Traction Ratio	额定载重 Load (kg)	电梯 额定速度 Elevator Speed (m/s)	额定转速 Rated speed (r/min)	额定转矩 Rated torque (N.m)	电机 Motor				制动器 Brake			曳引轮 Sheave						
						功率 Power (kW)	电压 Voltage (V)	电流 Current (A)	极对数 Poles (p)	频率 Frequency (Hz)	电流 Current (A)	电压 Voltage (V)	制动力矩 Brake torque (N.m)	节径 Diameter (mm)	绳槽 Rope rxd	β角 β angle	γ角 γ angle	槽距 Groove pitch (mm)	
GETM40C-500/1600	1:1 复绕 Double Wrapping	1600	5	119	4275	54	340	117	12	23.8	4x2	DC125	4x3350	800	7xø16	半圆槽 Semi-Circular Groove	22		
GETM40C-600/1600			6	143		64												137	28.6
GETM40C-700/1600			7	167		72												160	33.4
GETM40C-800/1600			8	191		86												174	38.2
GETM40C-500/2000		2000	5342	5	119	67	153	23.8											
GETM40C-600/2000				6	143	80	174	28.6											
GETM40C-700/2000				7	167	94	215	33.4											
GETM40C-800/2000				8	191	107	233	38.2											

注: 1. 以上信息仅供参考, 具体参数请以ODF表为准; 2. 绳槽数量、β角、γ角可根据客户系统进行非标; 3. 极数=2倍极对数。  
 Note: 1. Above parameters for information only, final parameters shall be as per ODF. 2. Quantity of rope groove number, β angle and γ angle can be tailor-made according to customer's requests.

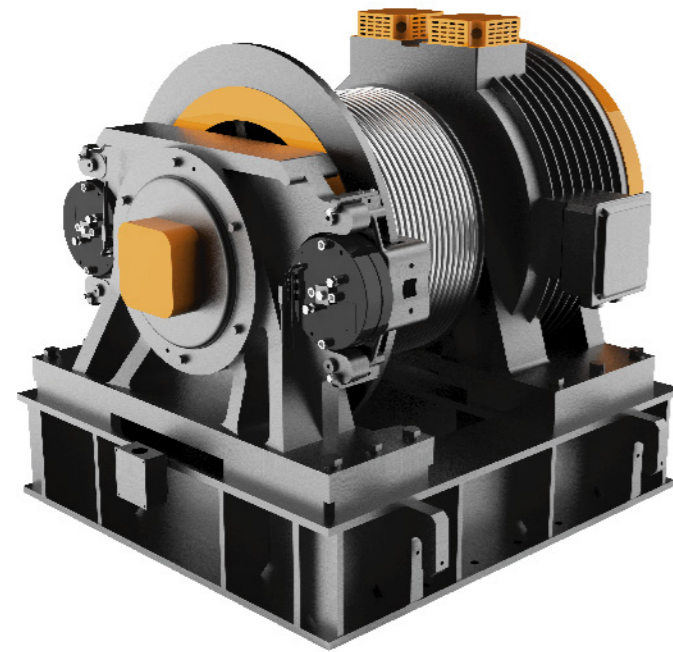
外形尺寸图 Overall Dimensions



适用于外包尺寸范围1200-1300mm  
 Applicable for Overall Size Range 1200-1300mm



# GETM70C



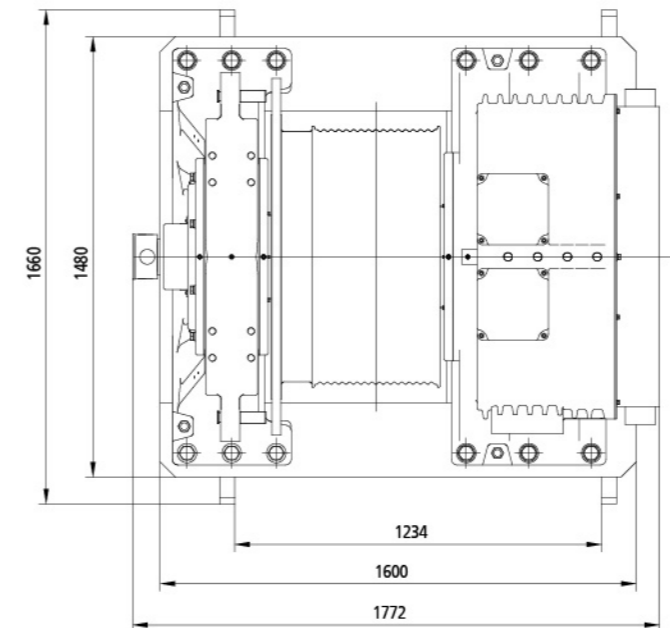
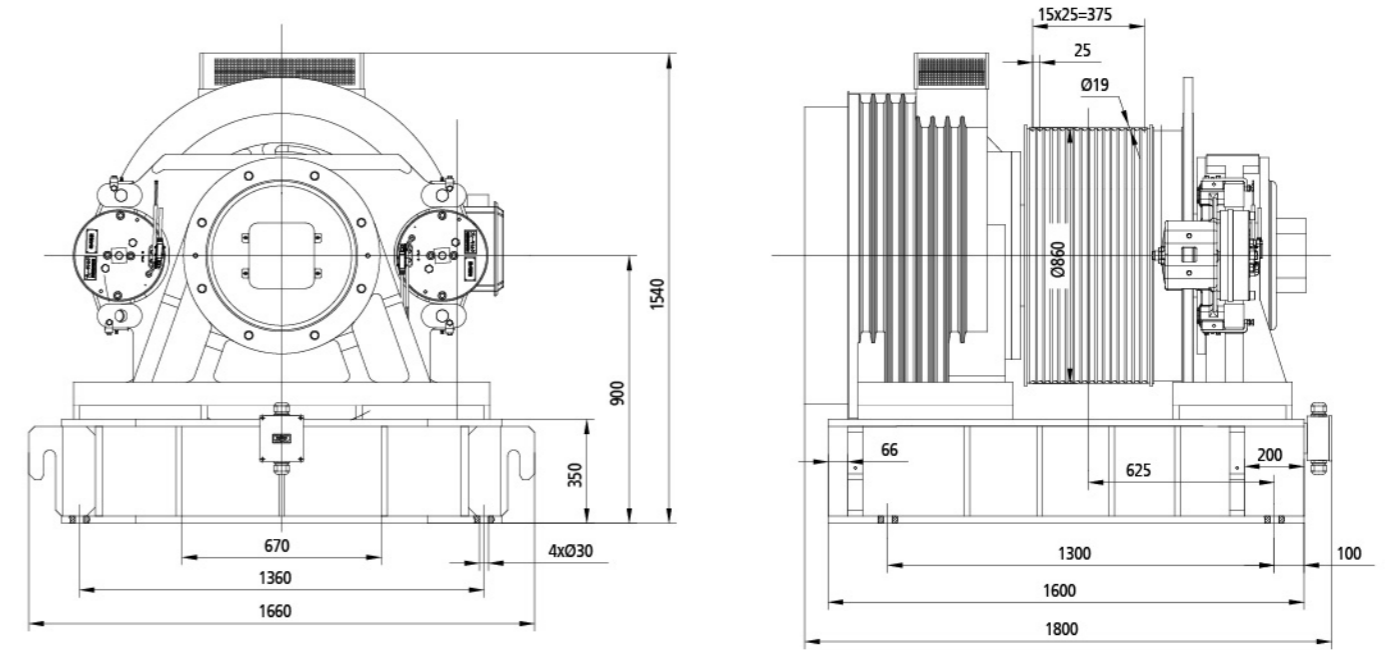
许用径向载荷 Max. axle load	70000kg
曳引机概算重量 Motor weight	8300kg
工作制 Working duty	S5-40%ED
绝缘等级 Ins. class	155(F)
制动器型号及数量 Brake type	2只EC-4035

规格表 Specification table

型号 Product type	曳引比 Traction Ratio	额定 载重 Load (kg)	电梯 额定速度 Elevator Speed (m/s)	额定转速 Rated speed (r/min)	额定转矩 Rated torque (N.m)	电机 Motor				制动器 Brake			曳引轮 Sheave				
						功率 Power (kW)	电压 Voltage (V)	电流 Current (A)	极对数 Poles (p)	频率 Frequency (Hz)	电流 Current (A)	电压 Voltage (V)	制动力矩 Brake torque (N.m)	节径 Diameter (mm)	绳槽 Rope nxd	β角 β angle	γ角 γ angle
GETM70C-1000/2000	1:1	2000	10	222	5635	131	340	290	10	37.0	2x6	DC125	2x7200	860	8xø19	半圆槽 Semi-Circular Groove	25
GETM70C-800/2000			8	178		105		246		29.7							

注: 1. 以上信息仅供参考, 具体参数请以ODF表为准; 2. 绳槽数量、β角、γ角可根据客户系统进行非标; 3. 极数=2倍极对数。  
Note: 1. Above parameters for information only, final parameters shall be as per ODF. 2. Quantity of rope groove number, β angle and γ angle can be tailor-made according to customer's requests.

外形尺寸图 Overall Dimensions





## 货梯主机系列 For Cargo Lifts

此蜗轮蜗杆异步曳引机是蜗轮蜗杆减速箱与三相异步电机用联轴器联接组成，采用蜗杆下置，使用双推制动器，其曳引轮采用“双支撑”布置，异步机变频控制，并通过光电编码器检测、反馈和控制。  
This worm geared asynchronous traction machine is combined by coupling to integrate worm reduction gearbox and 3 phase synchronous motor, with underlying worm, double push brake, dual support-structured traction sheave, VVVF controlled asynchronous motor and photoelectric encoder for operation status detecting and feedback.



噪音低，震动小，性能可靠，互换性强  
low noise, little vibration, stable performance, comprehensive interchangeability



借鉴国外先进装配工艺；优化电机、减速箱等结构  
Worldwide advanced assembly technology, optimized motor and reduction gearbox



蜗轮材料：离心铸造铜和锌基合金可选。合理的传动比选择使效率更高，合理的中心距设计，使蜗轮蜗杆使用寿命更长  
Worm gear material: centrifugal casted bronze or zinc-base alloy as options, higher efficiency resulted from more rational reduction ratio, and more rational center distance

# HYW6.0

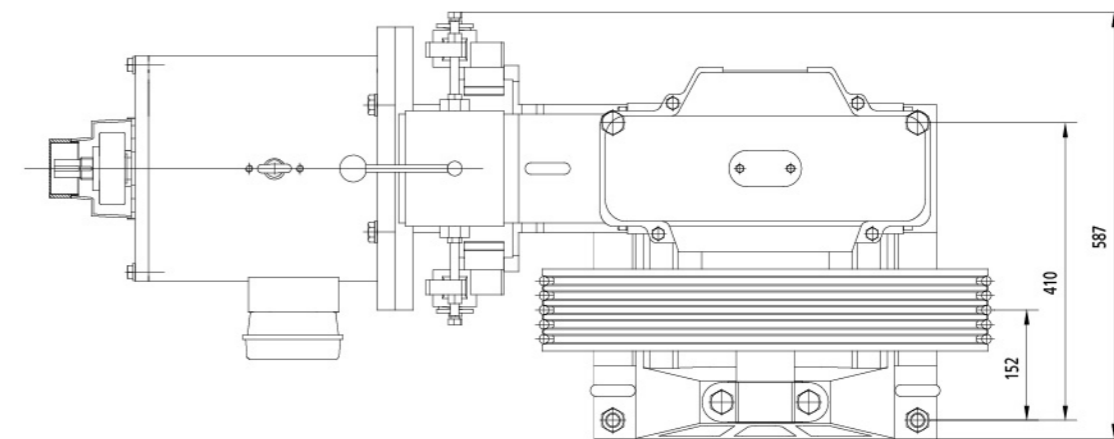
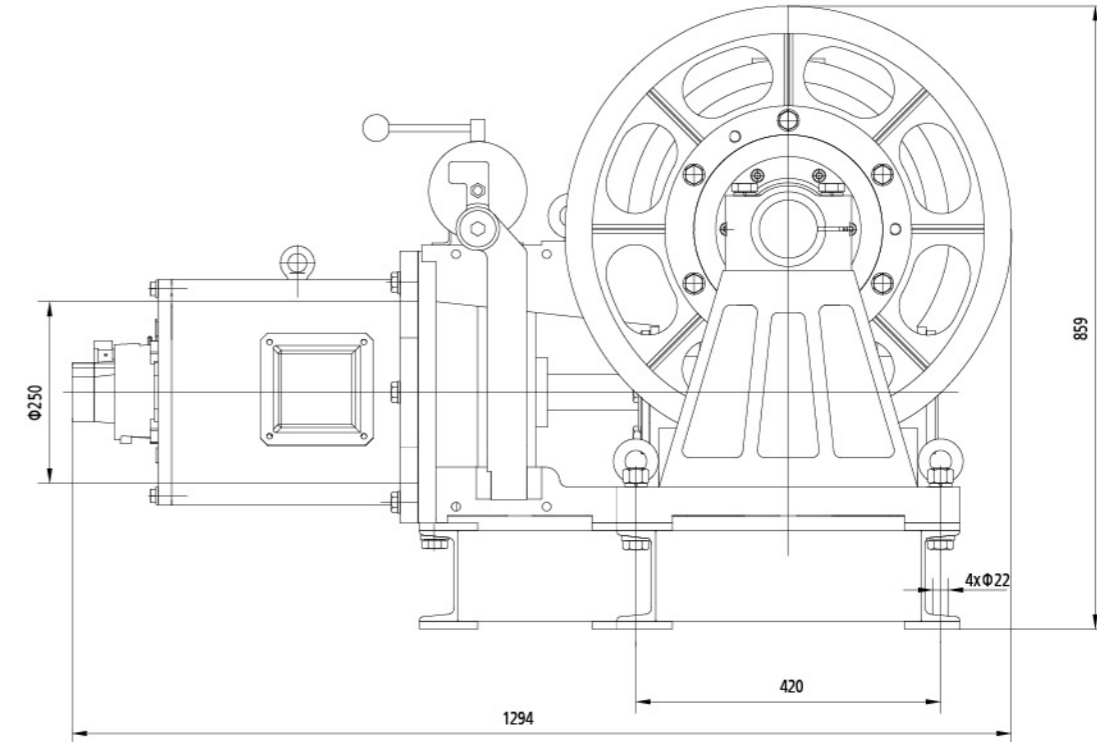


规格表 Specification table

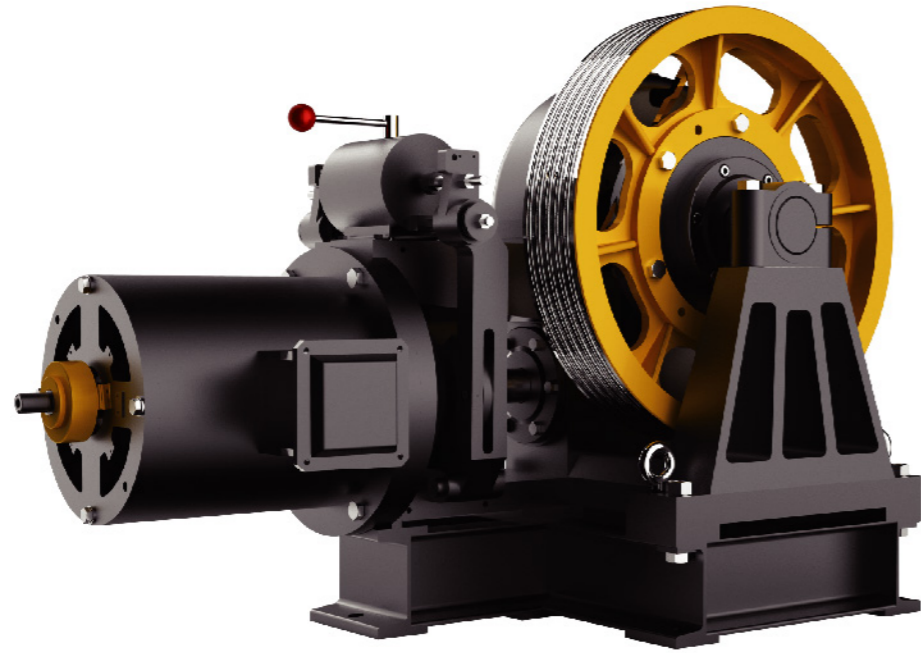
型号 Product type	曳引比 Traction Ratio	额定载重 Load (kg)	额定速度 Elevator Speed (m/s)	传动比 Gear Ratio	额定转速 Rated speed (r/min)	最大轴负荷 Max. Axle Load (kg)	主机重量 Weight (kg)	三相异步电机 Three-Phase Asynchronous Motor					启动次数 (次/小时) Start Frequency (per hour)	制动器 Brake			曳引轮 Sheave					编码器 Encoder	
								功率 Power (kW)	电压 Voltage (V)	电流 Current (A)	转速 Rated speed (r/min)	极对数 Poles (p)		频率 frequency (Hz)	型号 Product type	电压 Voltage (V)	制动力矩 Brake torque (N.m)	节径 Diameter (mm)	绳槽 Rope rxd	β角 β angle	γ角 γ angle		槽距 Groove pitch (mm)
HYW6.0-100/1000	1:1	1000	1	61:2	2300	6000	620	11	380	25	960	6	50	120	ZTW245-2x100	DC110	2x95	610	5xø13	96.5°	35°	20	HTB-30L24G8-24R1024B-510 (HOUE)
HYW6.0-050/2000	2:1	2000	0.5	61:2	2300	6000	620	11	380	25	960	6	50	120	ZTW245-2x100	DC110	2x95	610	5xø13	96.5°	35°	20	HTB-30L24G8-24R1024B-510 (HOUE)

注: 1. 制动器型号规格采用五龙制定对应的规格。 2. 左、右置可选用——以站在电机端面对曳引机, 曳引轮在左为左置, 在右为右置。 3. 极数=2倍极对数。  
 Note: 1. The specification of brake shall be as that from Wulong. 2. Definition of machine position: viewed from the motor end facing the traction machine, it is left-hand type when the sheave is at left side, and right-hand type when the sheave is at right side. Both left-hand type and right-hand type is available. 3. Poles=2xPoles.

外形尺寸图 Overall Dimensions



# HYW11



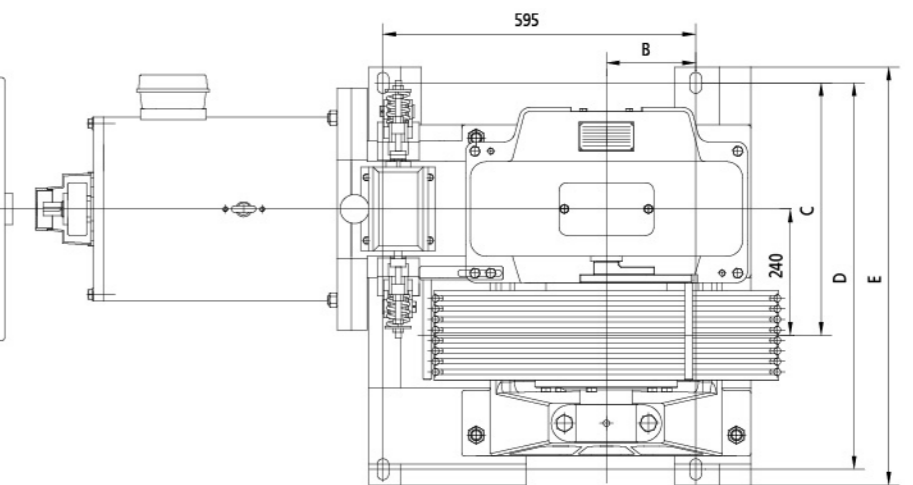
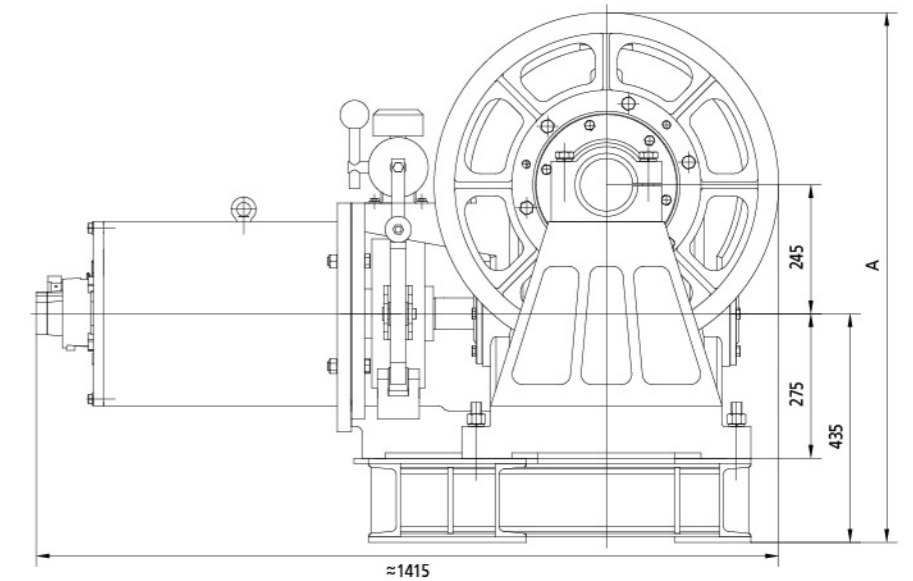
规格表 Specification table

型号 Product type	曳引比 Traction Ratio	额定载重 Load (kg)	额定速度 Elevator Speed (m/s)	传动比 Gear Ratio	额定转速 Rated speed (r/min)	最大轴负荷 Max. Axle Load (kg)	主机重量 Weight (kg)	三相异步电机 Three-Phase Asynchronous Motor					启动次数 (次/小时)		制动器 Brake		曳引轮 Sheave					编码器 Encoder			
								功率 Power (kW)	电压 Voltage (V)	电流 Current (A)	转速 Rated speed (r/min)	极对数 Poles (p)	频率 Frequency (Hz)	型号 Product type	电压 Voltage (V)	制动力矩 Brake torque (N.m)	节径 Diameter (mm)	绳槽 Rope rxd	β角 β angle	γ角 γ angle	槽距 Groove pitch (mm)				
HYW11-100/2000	2:1	2000	1	49:2	2600	11000	900	22	380	41	1460	4	50	120	ZTW284-2x150	DC110	2x115	5xø13	105°	25°	20	HTB-30L24G8-24R1024B-S10 (HOUDE)			
HYW11-050/4000	4:1	4000	0.5		2600			30	380	59	1450							650	8xø13	105°	25°		20		
HYW11-100/3000	2:1	3000	1		3300			26	380	50	1450								2x115	8xø13	96.5°		30°	20	
HYW11-050/5000	4:1	5000	0.5		3000			950	380	50	1450							8xø13		105°	25°		20		
HYW11-100/1600	1:1	1600	1	61:2	3300	850	15	380	32	960	6	50	120	ZTW284-2x150	DC110	2x130	8xø13	96.5°	30°	20					
HYW11-050/3000	2:1	3000	0.5		3300					960							380	32	960	610	8xø13		96.5°	30°	20
HYW11-025/4000	4:1	4000	0.25		2600					950							380	32	950		650		8xø13	105°	25°
HYW11-025/5000	4:1	5000	0.25		3000					950							380	32	950	8xø13			105°	25°	20

注: 1. 制动器型号规格采用五龙制定对应的规格。 2. 左、右置可选用——以站在电机端面对曳引机, 曳引轮在左为左置, 在右为右置。 3. 极数=2倍极对数。  
 Note: 1. The specification of brake shall be as that from Wulong. 2. Definition of machine position: viewed from the motor end facing the traction machine, it is left-hand type when the sheave is at left side, and right-hand type when the sheave is at right side. Both left-hand type and right-hand type is available. 3. Pole number = 2 x pole pair number.

外形尺寸图 Overall Dimensions

额定载重 Load (kg)	额定速度 Elevator Speed (m/s)	曳引比 Traction Ratio	传动比 Gear Ratio	A	B	C	D	E	F
2000	1	2:1	49:2	1007.5	162	450	665	725	115
4000	0.5	4:1			150				
3000	1	2:1							
5000	0.5	4:1							
1600	1	1:1	61:2	987.5	170	480	735	795	130
3000	0.5	2:1							
1600	1	1:1							
3000	0.5	2:1							
4000	0.25	4:1	1007.5						
5000									
4000									
5000									



# HYW15

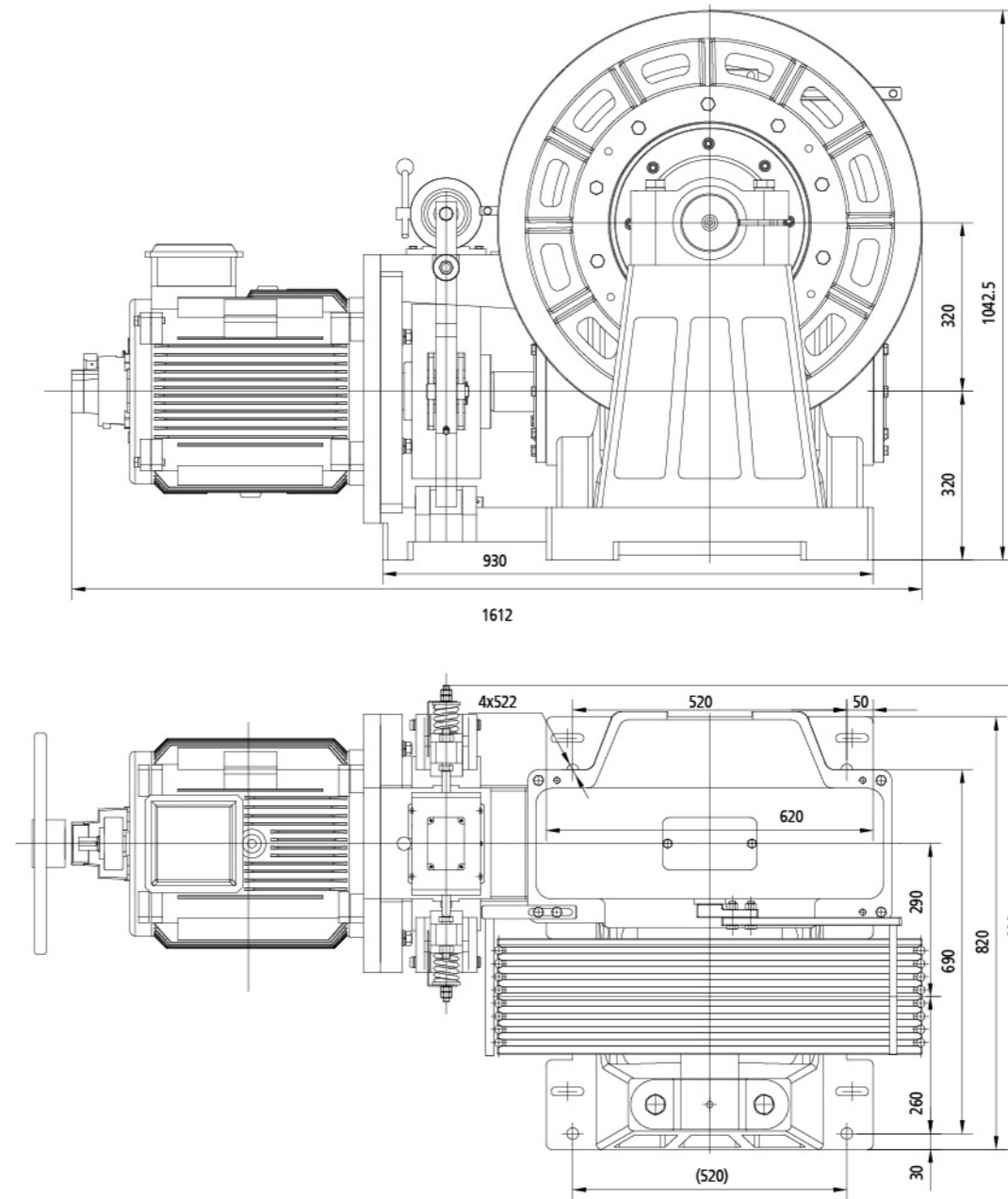


规格表 Specification table

型号 Product type	曳引比 Traction Ratio	额定载重 Load (kg)	额定速度 Elevator Speed (m/s)	传动比 Gear Ratio	额定转速 Rated speed (r/min)	最大轴负荷 Max. Axle Load (kg)	主机重量 Weight (kg)	三相异步电机 Three-Phase Asynchronous Motor					制动器 Brake		曳引轮 Sheave					编码器 Encoder			
								功率 Power (kW)	电压 Voltage (V)	电流 Current (A)	转速 Rated speed (r/min)	极对数 Poles (p)	频率 Frequency (Hz)	启动次数 Start Frequency (per hour)	型号 Product type	电压 Voltage (V)	制动力矩 Brake torque (N.m)	节径 Diameter (mm)	绳槽 Rope rxd		β角 β angle	γ角 γ angle	槽距 Groove pitch (mm)
HYW15-200/2500	1:1	2500	2	61:2	7150	15000	1780	45	380	87	1470	4	50	120	ZTW330-2x290	DC110	2x290	800	8xø16	100°	25°	25	HTB-30L24G8-24R1024B-S10 (HOUDE)
HYW15-100/5000	2:1	5000	1																				
HYW15-050/10000	4:1	10000	0.5																				

注: 1. 制动器型号规格采用五龙制定对应的规格。 2. 左、右置可选用——以站在电机端面对曳引机, 曳引轮在左为左置, 在右为右置。 3. 极数=2倍极对数。  
 Note: 1. The specification of brake shall be as that from Wulong. 2. Definition of machine position: viewed from the motor end facing the traction machine, it is left-hand type when the sheave is at left side, and right-hand type when the sheave is at right side. Both left-hand type and right-hand type is available.

外形尺寸图 Overall Dimensions





## 扶梯主机系列 For Escalator

此蜗轮蜗杆异步曳引机是蜗轮蜗杆减速箱与三相异步电机用联轴器联接组成，采用蜗杆下置，使用双推制动器，其曳引轮采用“双支撑”布置，异步机变频控制，并通过光电编码器检测、反馈和控制。整体布置取消传动链条，避免链条断裂风险，维护方便。  
This worm geared asynchronous traction machine is combined by coupling to integrate worm reduction gearbox and 3 phase synchronous motor, with underlying worm, double push brake, dual support-structured traction sheave, VVVF controlled asynchronous motor and photoelectric encoder for operation status detecting and feedback. Driving chain is cancelled in order to prevent from risks of chain breaking risks and facilitate maintenance.



驱动力强劲、平稳  
Powerful and stable driving force

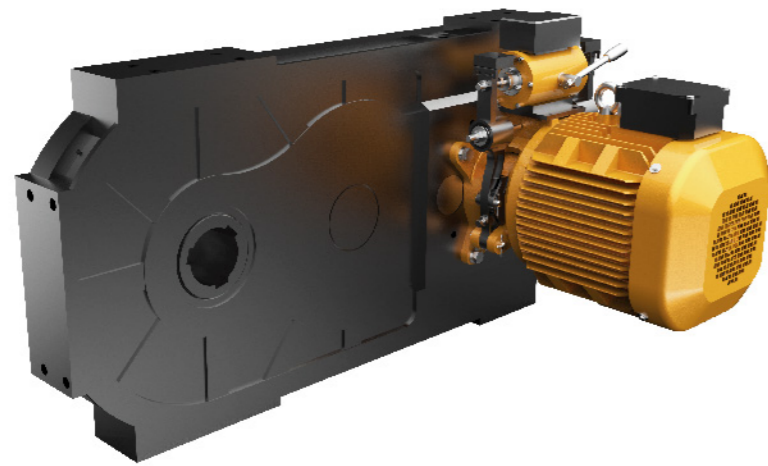


制动及时、可靠  
Timely and reliable braking



低噪音减速机  
Low noise speed reducer

# FYD06

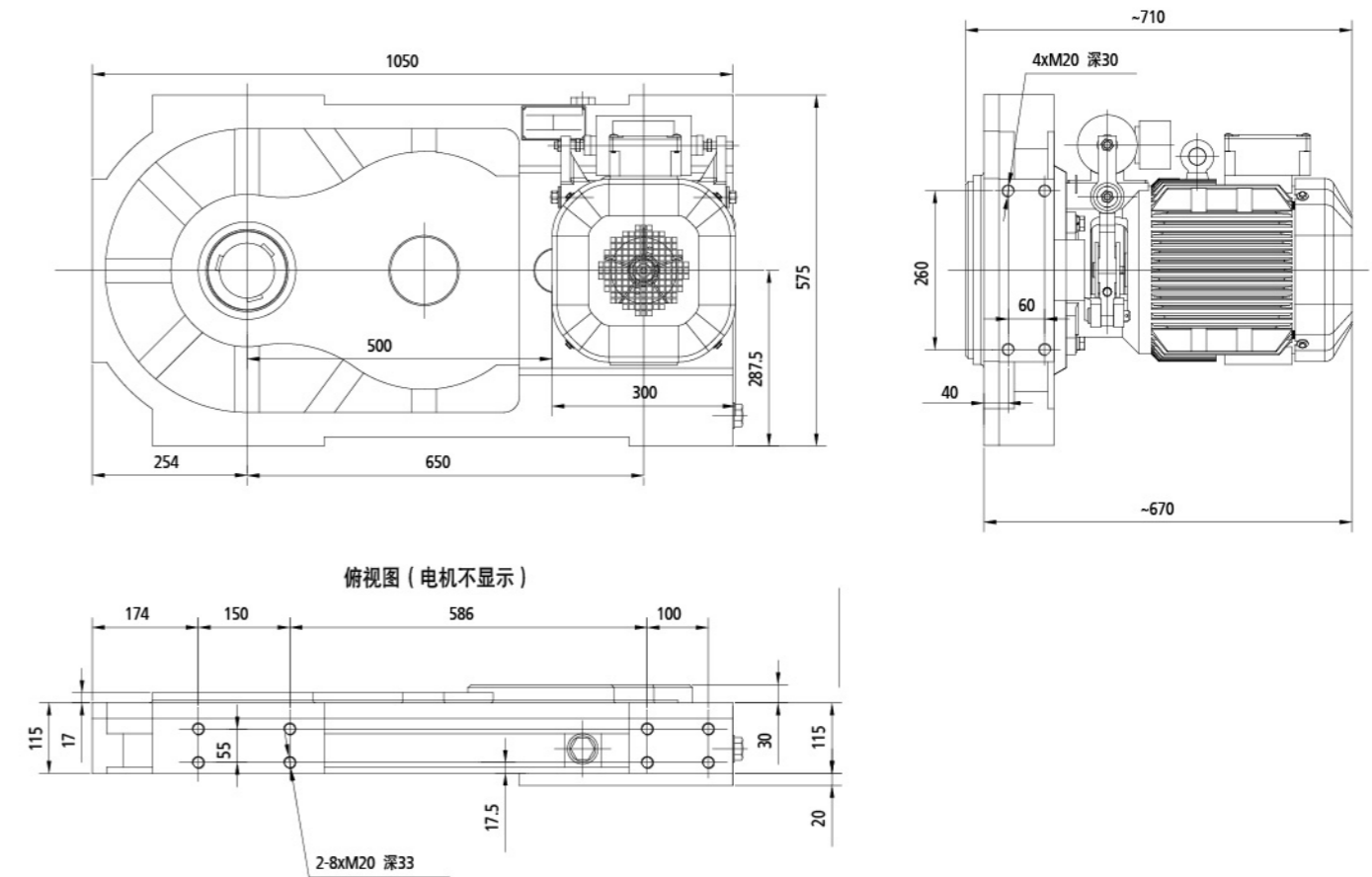


提升高度 Rise height	6m
曳引机概算重量 Motor weight	480kg
工作制 Working duty	S5-40%ED

型号 Product type	电梯 额定速度 Elevator Speed (m/s)	传动比 Rated speed	额定转矩 Rated torque (N.m)	输出转速 Output Speed (r/min)	三相异步电机 Motor					制动器 Brake		
					功率 Power (kW)	电压 Voltage (V)	电流 Current (A)	极对数 Poles (p)	频率 Frequency (Hz)	型号 Type	电压 Voltage (V)	制动力矩 Brake torque (N.m)
FYD06	0.5	69.56:1	5500	13.9	8.5	380	18.3	3	50	ST-180	AC 220	2x40

注: 1. 左、右置可选用——以站在整机扶梯下端, 面朝扶梯, 主机在左侧为左置, 反之则为右置; 2. 极数=2倍极对数。  
 Note: Left-side or Right-side can be option—Left side means the person stands the bottom of escalator when facing the escalator, Vice versa.

## 外形尺寸图 Overall Dimensions



图示主机为左置扶梯主机。  
 The machine is left-side one for escalator.