

净开门宽度 (OP): 700mm ~ 1200mm

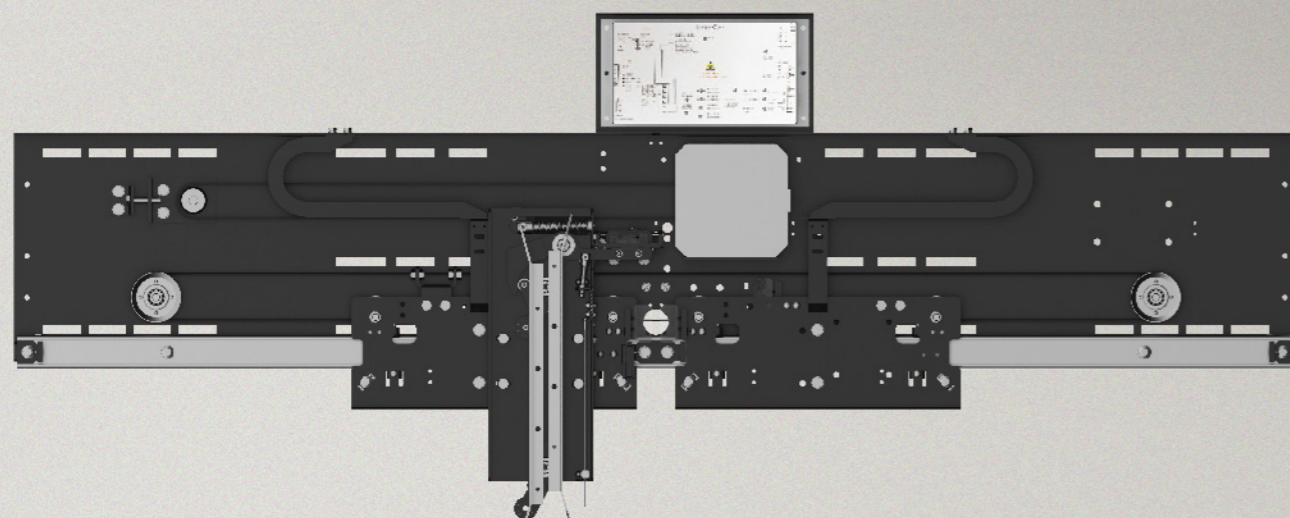
Net opening width (OP): 700mm ~ 1200mm

门刀结构: 集成同步门刀

Structure of door vane: Integrated Synchronous Door Cam

安装方式: 直梁安装/轿顶安装

Installation mode: straight beam installation/ car top installation



JC-2C60E2A



LLD-O



LLD3-O

Jarless-Con中分门系统 Jarless-Con Center Open Door System

公司主力产品Jarless-con中分交流永磁门机, 是一种采用最新永磁同步电机驱动和最新无极调速变频控制的成熟门系统。可达到最佳的开关门速度曲线, 且运行节能、高效、可靠, 操作简单, 大大满足了现代人对产品高效节能且使用便捷的需求, 机械结构紧凑, 可使用多种安装方式, 广泛运用于住宅楼、商务楼、宾馆等不同要求的场所。同时可适用于75mm和60mm宽度的轿门地坎。

The main product center opening AC permanent-magnetic door operator is a mature system subject to the latest permanent-magnetic synchronous motor driving and stepless speed regulation VF control. It can bring optimal opening/closing speed curve, and operates in an energy-saving, high-efficiency and reliable way. Easy for operation, the product largely meets current demands for high efficiency, energy saving and operability. Depending on compact mechanical structure, it can be installed in different modes, widely used in residential building, business building and hotel. Besides, it can be used for door sill of 75mm or 60mm wide.

自主知识产权: 变频器和电机独立知识产权, 自主设计制造。

控制精确: 采用最新无级调速变频控制的门驱动系统控制, 闭环矢量控制, 实时速度反馈, 调速精确度达到0.1%。

可靠设计: 主要机械部件采用标准化设计, 严格的三维建模、有限元分析等设计验证, 机械结构和控制系统均通过部件的可靠性测试、异常状态测试、功能测试等部件验证; 整机更是通过严酷的异常状态测试、功能测试以及300万次运行的可靠性测试验证, 确保了产品的可靠性。同时产品具有运行平稳、舒适度高等特点。

适应性高: 输入宽电压带设计, 输入电压 $220V \pm 20\%$; 抗工地各种复杂环境。

调试简单: 服务器调试或旋钮调试, 3分钟可完成正常调试。

成熟可靠: 2009年至今已有35万多台在工地正常运行使用, 故障率极低。

其他功能: 独特的障碍点记忆保护功能; 门刀打开/闭合曲线可调功能; 停电慢关门功能; 编码器故障保护功能; 夹入检出力矩可选功能等。

Intellectual property rights: own the intellectual property rights of frequency converter and motor, which are designed and manufactured by ourselves.

Accurate control: adopts the latest stepless speed regulation frequency control door driving system, loop vector control and real time speed feedback. Speed regulating accuracy can reach to 0.1%.

Reliable design: Main mechanical components are subject to standardized design and strict design verification (3D modeling, finite element analysis, etc.). Both mechanical structure and control system are subject to component verification (reliability test, abnormality test, functional test, etc.). Even more, the whole unit is subject to rigorous abnormality test, functional test and 3-million operations test. These guarantee product reliability. Besides, the product features stable operation, good comfort and low noise.

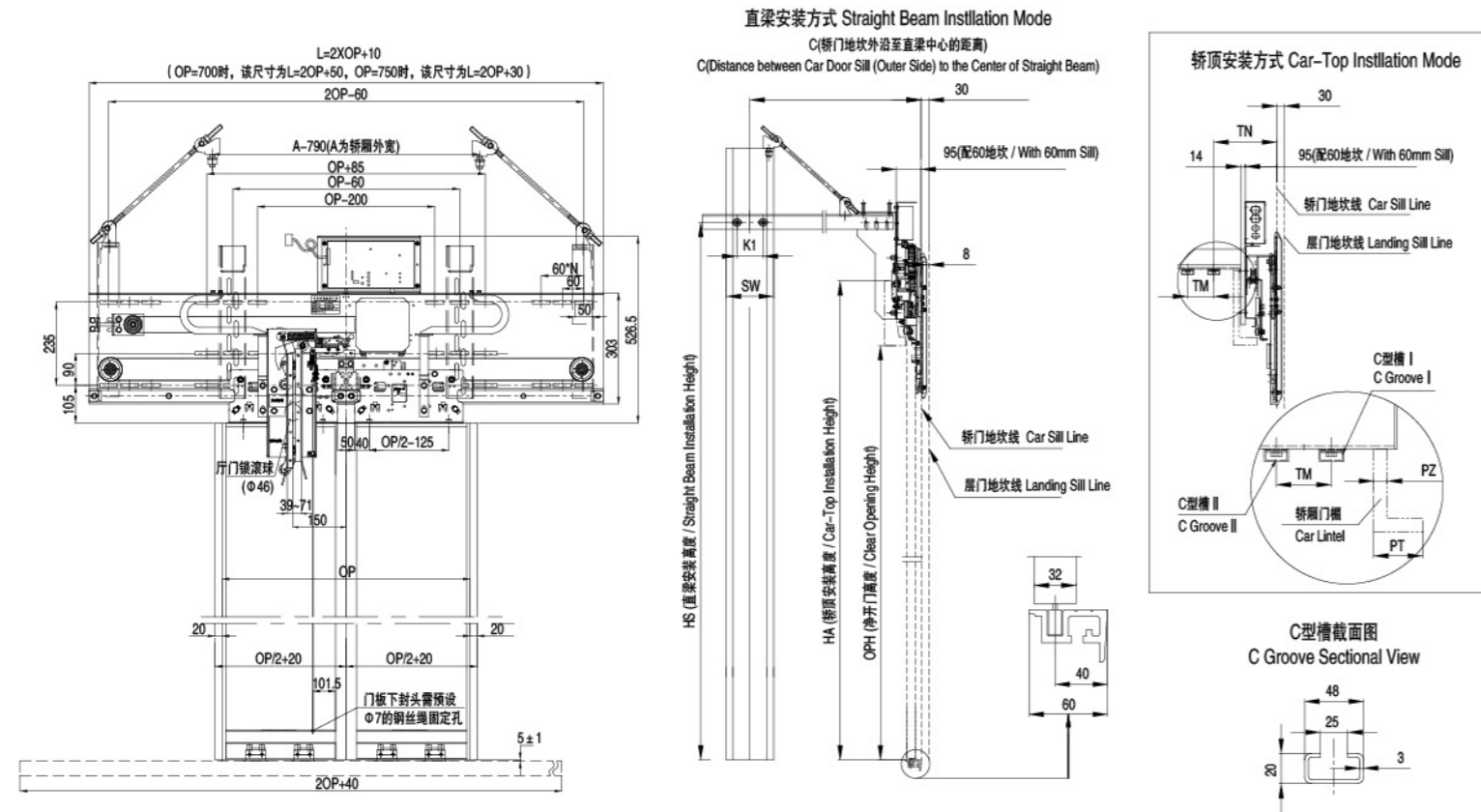
Good adaptability: The design of wide voltage input tape supports input voltage of $220V \pm 20\%$, suitable for synchronous door vane, asynchronous door vane and anti-pull asynchronous door vane as well as various complex environments in construction site.

Easy debugging: Normal debugging can be finished within 3 min, through server or knob.

Maturity and reliability: Since 2009, more than 350,000 sets have been put into normal operation, with few faults.

Other functions: fault memory protection, adjustable door vane opening/closing curve, synchronous/asynchronous door vane selection, slow closing under outage, encoder fault protection, adjustable optional torque

JC-2C60E2A中分门系统 / JC-2C60E2A Center Open Door System

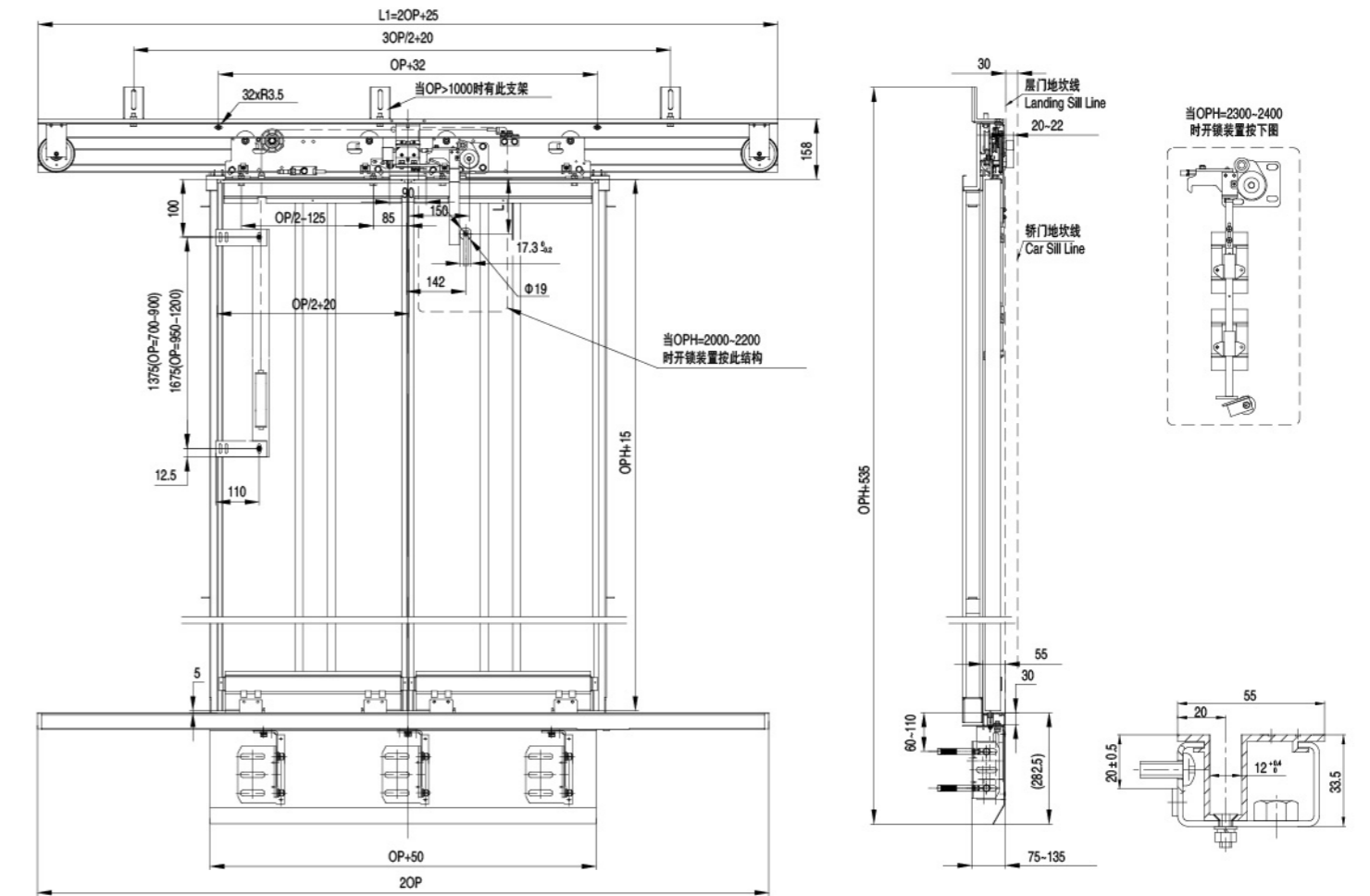


参考尺寸表 / Data Sheet

OP (净开门宽度 / Clear Opening Width)	700	750	700	750	800	850	900	950	1000	1050	1100	1150	1200
A (轿厢外宽度 / Car External Width)	950≤A≤1050	950≤A≤1050	1150≤A≤1420	1200≤A≤1520	1250≤A≤1620	1300≤A≤1720	1350≤A≤1820	1400≤A≤1920	1450≤A≤2020	1500≤A≤2120	1550≤A≤2220	1600≤A≤2320	1650≤A≤2420
L	1450	1530	1450	1530	1610	1710	1810	1910	2010	2110	2210	2310	2410
AS	根据要求确定 / As per Request												
HS	默认值 / Default Value: OPH+405/OPH+505												
A	根据要求确定 / As per Request												
SW	默认值为180, 也可根据要求确定 / Default Value: 180, or As per Request												
HA	根据要求确定 / As per Request												
K1	默认值为100, 也可根据要求确定 / Default Value: 100, or As per Request												
TM	轿顶C型槽之间的间距, 默认值: 100mm / Distance between C Grooves on Car Top, Default Value: 100mm												
TN	C型槽II的中心距离轿门地坎外沿的距离 / Distance between C Groove II Center and Car Door Sill outer Line												
门刀结构 / Door Vane Structure	集成轿门锁同步门刀, 门刀有效长度320mm / Integrated Door Lock Synchronous Door Cam, Effective length of door cam 320mm												
安装方式 / Installation Mode	轿顶安装 / Car Top Installation Mode 直梁安装 Straight Beam Installation Mode / 轿顶安装 Car Top Installation Mode												

单位 / Unit: mm

LLD3-O中分层门系统 / LLD3-O Center Open Landing Door System

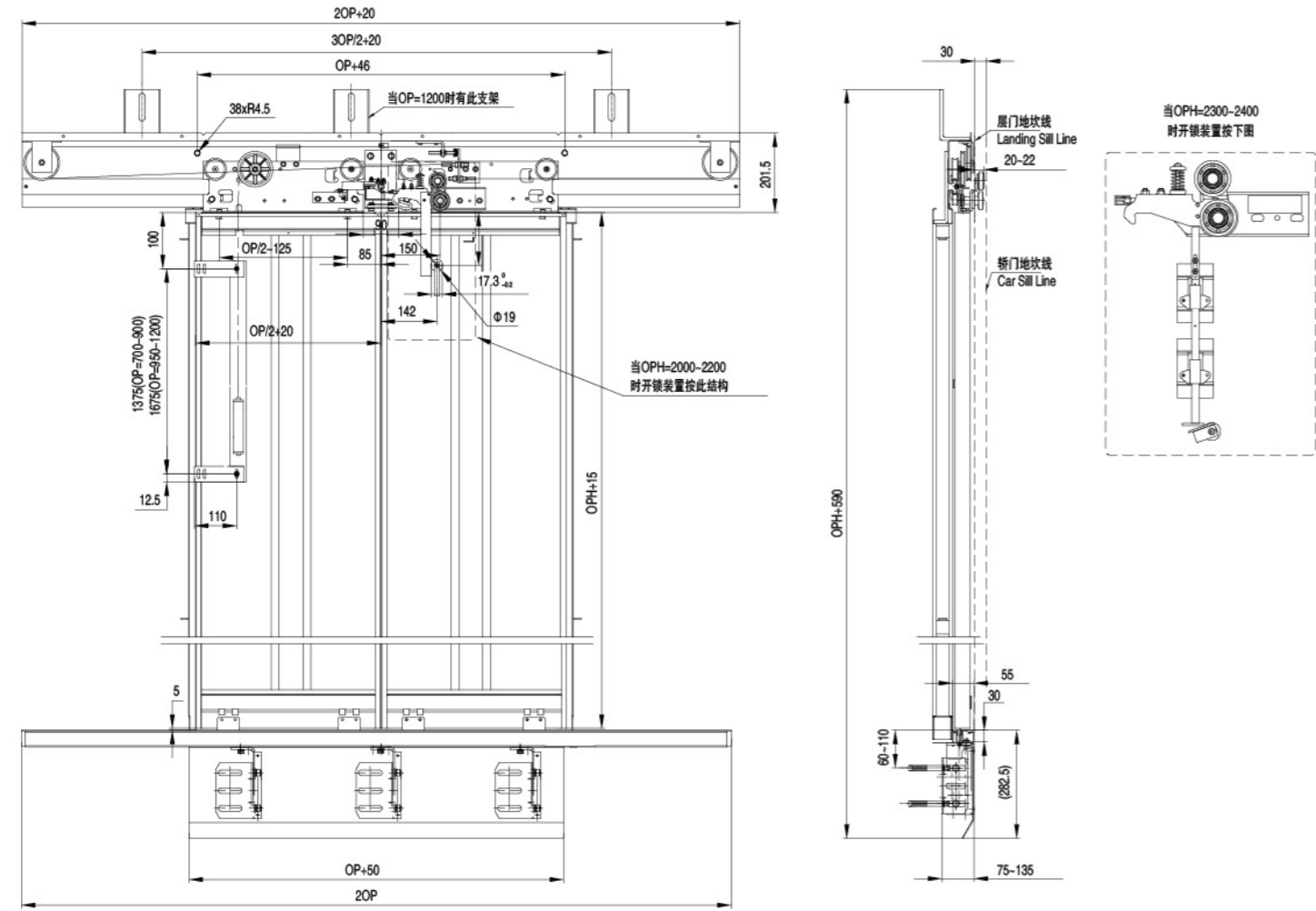


参考尺寸表 / Data Sheet

OP (净开门宽度 / Clear Opening Width)	700	750	800	850	900	950	1000	1050	1100	1150	1200
L1=2OP+25	1425	1525	1625	1725	1825	1925	2025	2125	2225	2325	2425
OPH	2000~2400										

单位 / Unit: mm

LLD-O中分层门系统 / LLD-O Center Open Landing Door System



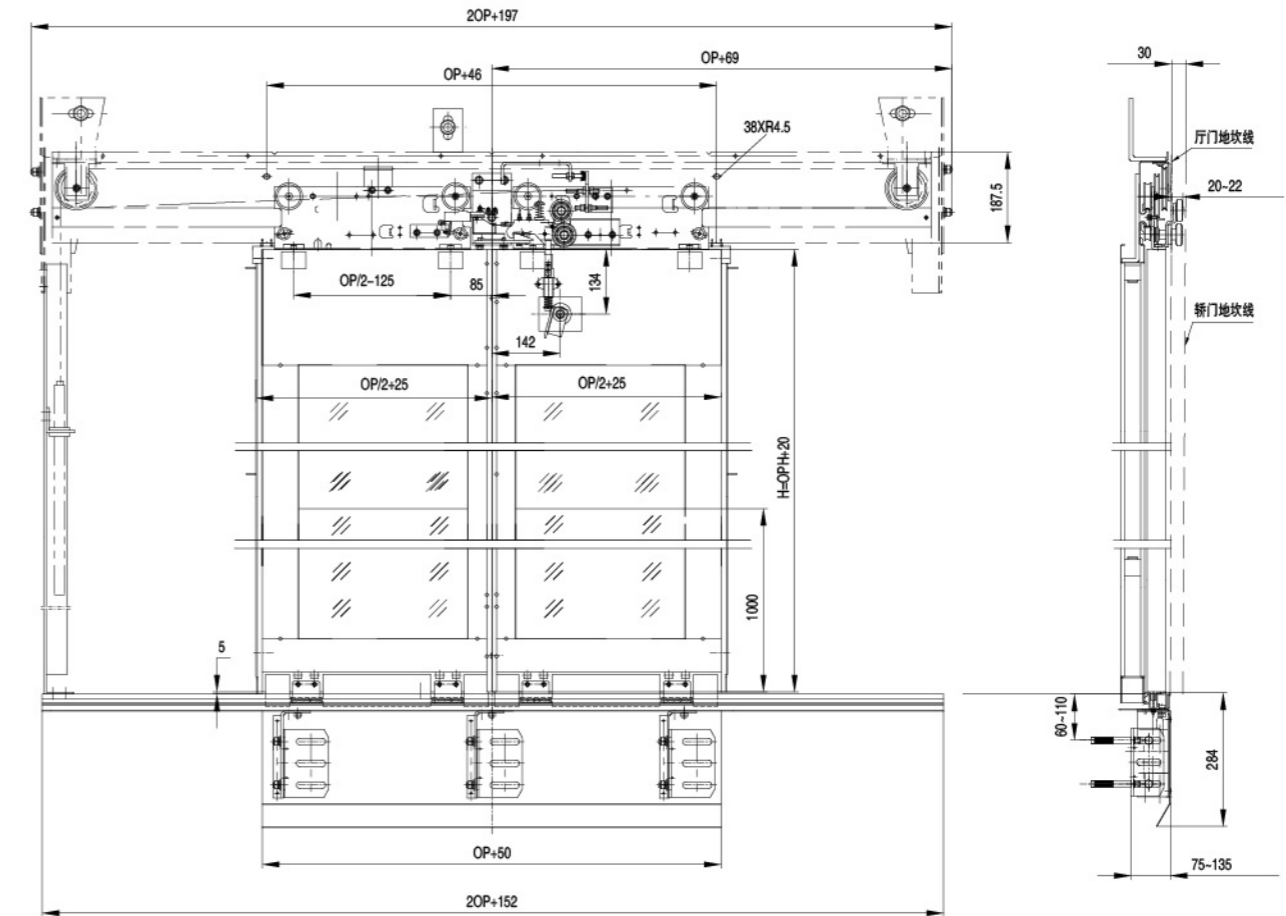
OP	700-1200				
OPH	2000	2100	2200	2300	2400
L	134	134	334	434	434

参考尺寸表 / Data Sheet

单位 / Unit: mm

OP (净开门宽度 / Clear Opening Width)	700	750	800	850	900	950	1000	1050	1100	1150	1200
L1=2OP+20	1420	1520	1620	1720	1820	1920	2020	2120	2220	2320	2420
OPH	2000~2400										

GLD厅门系统 / Glass Landing Door system



备注:

- 1: 本图为观光梯重锤左置, 右置与图对称, 需提供土建图。
- 2: 适用钢板门OP700-1200, OPH2000-2400。
有框玻璃门OP700-1200, OPH2000-2400。
无框玻璃门OP700-1200, OPH2000-2300。

净开门宽度 (OP): 700mm ~ 1800mm

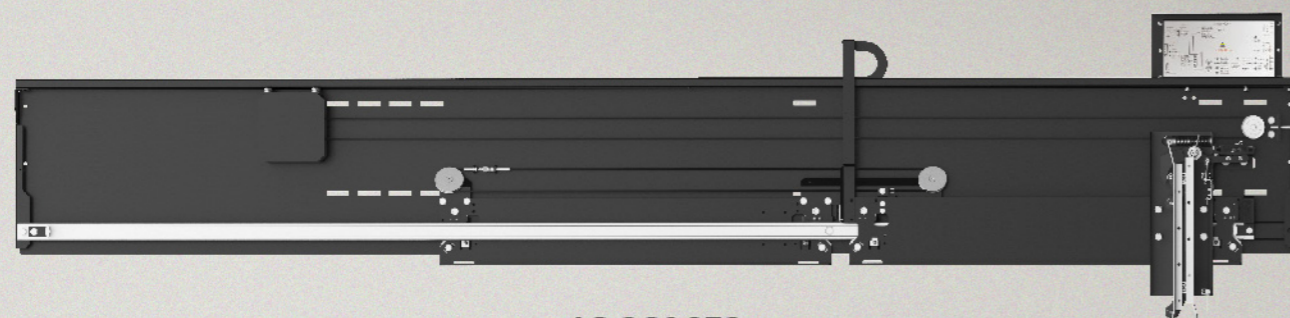
New opening width (OP): 700mm ~ 1800mm

门刀结构: 集成同步门刀

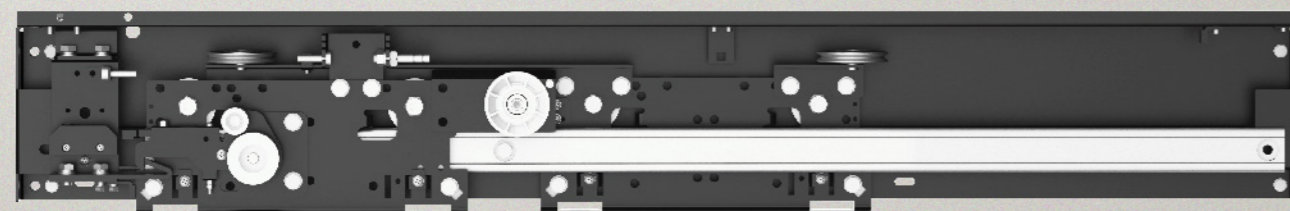
Structure of door vane: Integrated Synchronous Door Cam

安装方式: 直梁安装/轿顶安装

Installation modes: straight beam installation/car top installation



JC-2S96E2



LD-2S96A-O

Jarless-Con旁开双折门系统 (96地坎)

Jarless-Con Side Open Two Panel Door System (with 96 sill)

该产品为我司研发的Jarless-Con双折交流永磁门机, 它是一种采用永磁同步电机驱动和无级调速变频控制的门驱动系统, 安装方便, 调试简单, 运行可靠, 其最大的优势在于结构非常紧凑, 井道的利用率高, 广泛应用于家用梯及别墅梯中。

Jarless-Con two panel AC permanent-magnetic door operator is a door driving system subject to permanent-magnetic synchronous motor driving and stepless speed regulation VF control, easy for installation and debugging and reliable in operation. Its most important advantage is very compact structure, which brings high use ratio of hoistway. The product is widely used in home elevator and villa elevator.

自主知识产权: 变频器和电机独立知识产权, 自主设计制造。

控制精确: 采用最新无级调速度变频控制的门驱动系统控制, 闭环矢量控制, 实时速度反馈, 调速精确度达到0.1%。

可靠设计: 主要机械部件采用标准化设计, 严格的三维建模、有限元分析等设计验证, 机械结构和控制系统均通过部件的可靠性测试、异常状态测试、功能测试等部件验证; 整机更是通过严酷的异常状态测试、功能测试以及300万次运行的可靠性测试验证, 确保了产品的可靠性。同时产品具有运行平稳、舒适度、低噪音等特点。

适应性高: 输入宽电压带设计, 输入电压 $220V \pm 20\%$; 抗工地各种复杂环境。

调试简单: 服务器调试或旋钮调试, 3分钟可完成正常调试。

成熟可靠: 2009年至今已有200000多台在工地正常运行使用, 故障率极低。

其他功能: 独特的障碍点记忆保护功能; 门刀打开/闭合曲线可调功能; 停电慢关门功能; 编码器故障保护功能; 夹入检出力矩可选功能等。

Intellectual property rights: own the intellectual property rights of frequency converter and motor, which are designed and manufactured by ourselves.

Accurate control: adopts the latest stepless speed regulation frequency control door driving system, loop vector control and real time speed feedback. Speed regulating accuracy can reach to 0.1%.

Reliable design: Main mechanical components are subject to standardized design and strict design verification (3D modeling, finite element analysis, etc.). Both mechanical structure and control system are subject to component verification (reliability test, abnormality test, functional test, etc.). Even more, the whole unit is subject to rigorous abnormality test, functional test and 3-million operations test. These guarantee product reliability. Besides, the product features stable operation, good comfort and low noise.

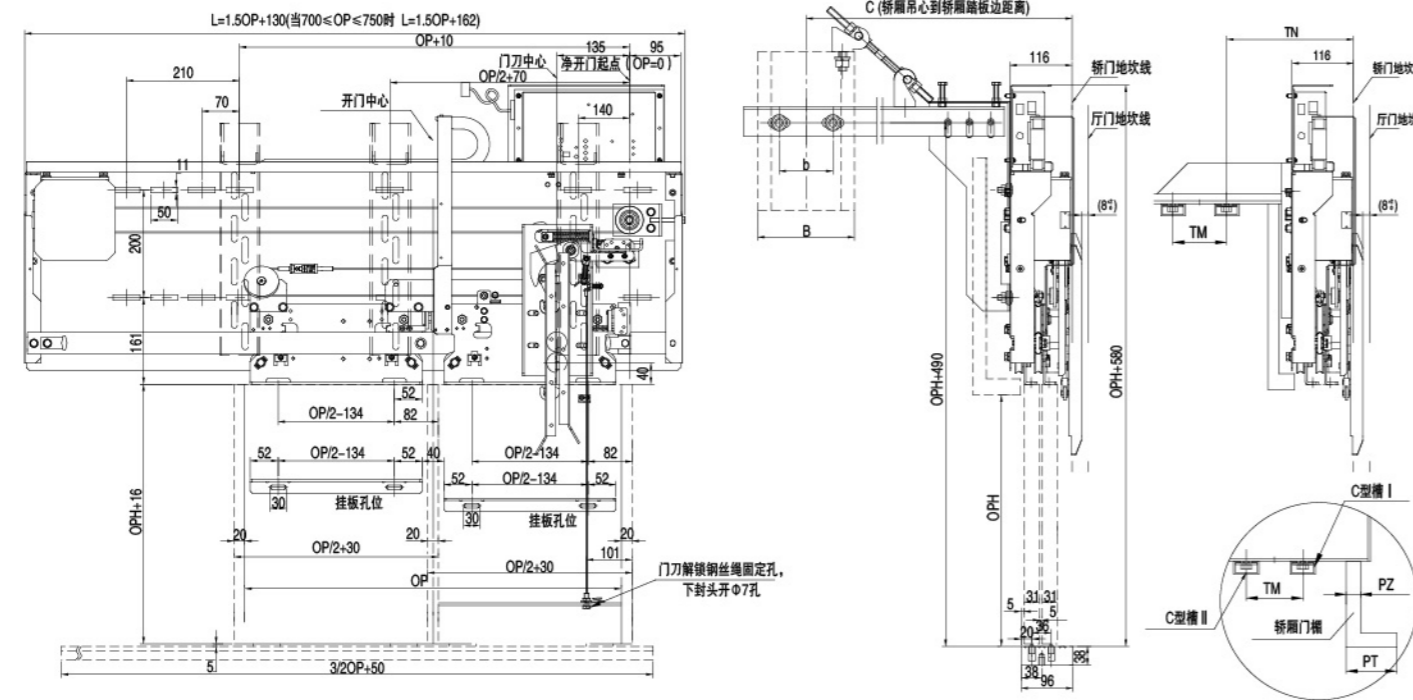
Good adaptability: The design of wide voltage input tape supports input voltage of $220V \pm 20\%$, suitable for synchronous door vane, asynchronous door vane and anti-pull asynchronous door vane as well as various complex environments in construction site.

Easy debugging: Normal debugging can be finished within 3 min, through server or knob.

Maturity and reliability: Since 2009, more than 200,000 sets have been put into normal operation, with few faults.

Other functions: fault memory protection, adjustable door vane opening/closing curve, synchronous/asynchronous door vane selection, slow closing under outage, encoder fault protection, adjustable optional torque

JC-2S96E2旁开双折门系统 / JC-2S96E2 Side Open Two Panel Door System

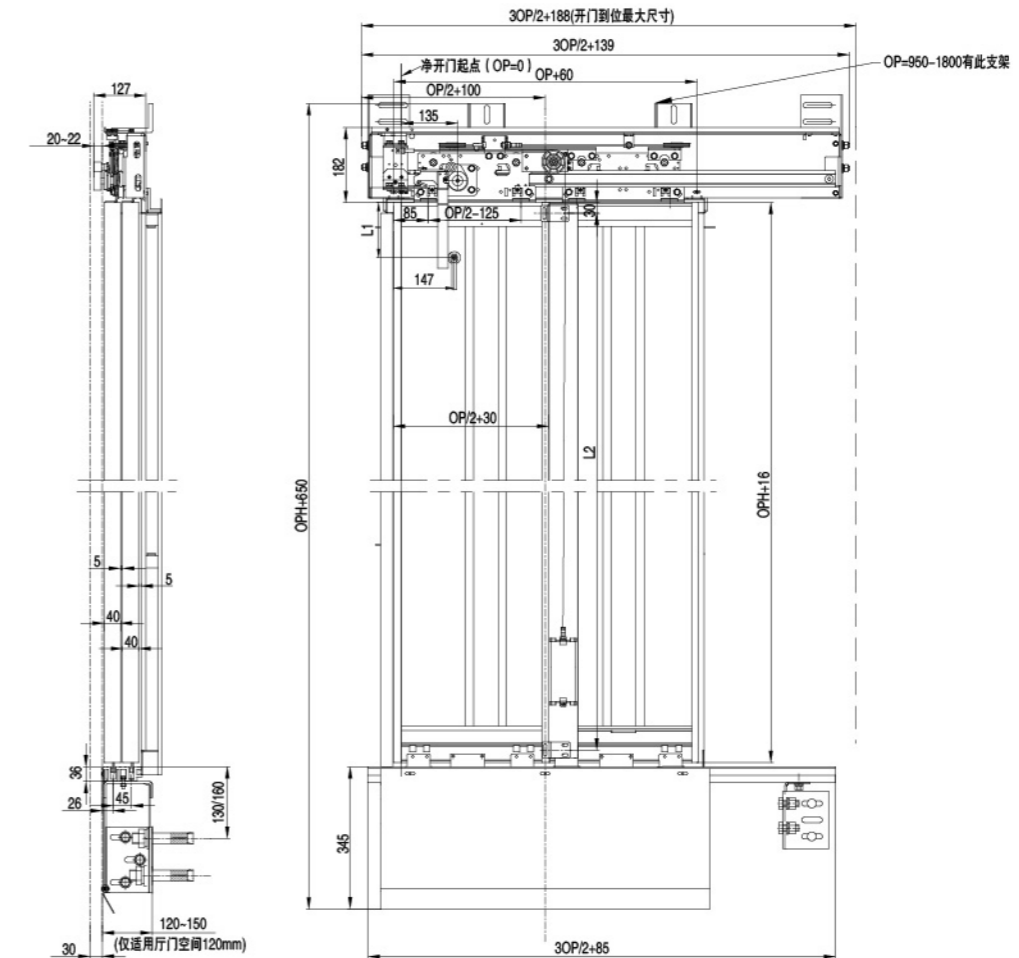


参考尺寸表 / Data Sheet

单位 / Unit: mm

OP (净开门宽度 / Clear Opening Width)	700	750	800	850	900	950	1000	1050	1100	1150	1200	1250	1300	1350	1400	1450	1500	1550	1600	1650	1700	1750	1800
L	1206	1281	1324	1399	1474	1549	1624	1699	1774	1849	1924	1999	2074	2149	2224	2299	2374	2449	2524	2599	2674	2749	2824
C	根据要求确定 / As per Request																						
K1	默认值为100, 也可根据要求确定 / Default Value: 100, or As per Request																						
SW	默认值为180, 也可根据要求确定 / Default Value: 180, or As per Request																						
HS	默认值 / Default Value: OPH+490																						
门刀结构 / Door Vane Structure	集成轿门锁同步门刀, 门刀有效长度320mm / Integrated Door Lock Synchronous Door Cam, Effective length of door cam 320mm																						
安装方式 / Installation Mode	直梁安装 Straight Beam Installation Mode / 轿顶安装 Car Top Installation Mode																						

LD-2S96A-O旁开层门系统 / LD-2S96A-O Side Open Landing Door System



OPH	2000	2100	2200	2300	2400	2500	2600	OP	700-900	950-1500	1550-1800
L1	134	134	320	434	434	634	634	L2	1560	1960	2060

备注: 当OPH=2000, 且OP=1550-1800时, 此图不做参考, 需非标处理。

参考尺寸表 / Data Sheet (备注: OPH覆盖范围可覆盖到3000)

单位 / Unit: mm

OP (净开门宽度 / Clear Opening Width)	700	750	800	850	900	950	1000	1050	1100	1150	1200	1250	1300	1350	1400	1450	1500	1550	1600	1650	1700	1750	1800
L=3OP/2+188	1238	1313	1388	1463	1538	1613	1688	1763	1838	1913	1988	2063	2138	2213	2288	2363	2438	2513	2588	2663	2738	2813	2888
OPH	2000-2600																						

净开门宽度 (OP): 1200mm ~ 3000mm

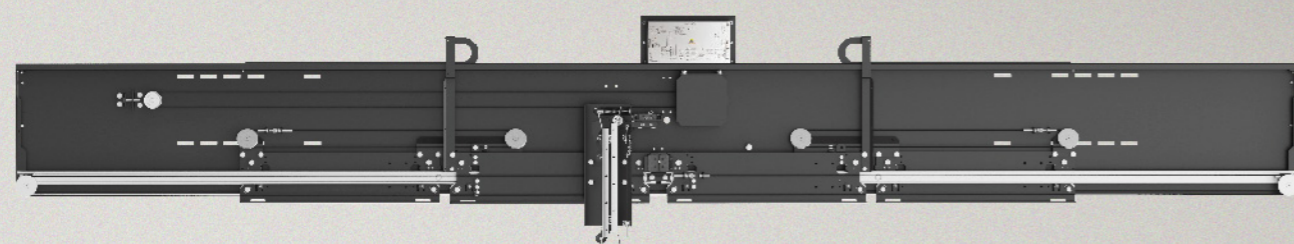
Net opening width (OP): 1200mm ~ 3000mm

门刀结构: 集成同步门刀

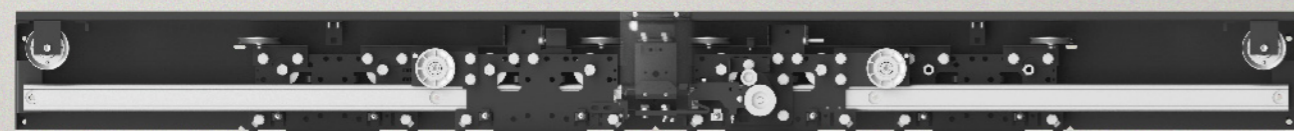
Structure of door vane: Integrated Synchronous Door Cam

安装方式: 直梁安装/轿顶安装

Installation modes: straight beam installation/car top installation



JC-4C96E2



LD-4C96A-O

Jarless-Con中分双折门系统

Jarless-Con Center Open Four Panel Door System

该门机采用我公司自主研发的永磁同步电机驱动, 使用闭环控制; 具有节能高效、结构紧凑、井道利用率高、安装方便等优点。

The door is independently developed by our company, subject to permanent-magnetic synchronous motor driving and closed loop control. It has advantages of energy saving, high efficiency, compact structure, high use ratio of hoistway and easy installation.

自主知识产权: 变频器和电机独立知识产权, 自主设计制造。

控制精确: 采用最新无级调速度变频控制的门驱动系统控制, 闭环矢量控制, 实时速度反馈, 调速精确度达到0.1%。

可靠设计: 主要机械部件采用标准化设计, 严格的三维建模、有限元分析等设计验证, 机械结构和控制系统均通过部件的可靠性测试、异常状态测试、功能测试等部件验证; 整机更是通过严酷的异常状态测试、功能测试以及300万次运行的可靠性测试验证, 确保了产品的可靠性。同时产品具有运行平稳、舒适度高、低噪音等特点。

适应性高: 输入宽电压带设计, 输入电压 $220V \pm 20\%$; 抗工地各种复杂环境。

调试简单: 服务器调试或旋钮调试, 5分钟可完成正常调试。

成熟可靠: 2009年至今已有200000多台在工地正常运行使用, 故障率极低。

其他功能: 独特的障碍点记忆保护功能; 门刀打开/闭合曲线可调功能; 停电慢关门功能; 编码器故障保护功能; 夹入检出力矩可选功能等。

Intellectual property rights: own the intellectual property rights of frequency converter and motor, which are designed and manufactured by ourselves.

Accurate control: adopts the latest stepless speed regulation frequency control door driving system, loop vector control and real time speed feedback. Speed regulating accuracy can reach to 0.1%.

Reliable design: Main mechanical components are subject to standardized design and strict design verification (3D modeling, finite element analysis, etc.). Both mechanical structure and control system are subject to component verification (reliability test, abnormality test, functional test, etc.). Even more, the whole unit is subject to rigorous abnormality test, functional test and 3-million operations test. These guarantee product reliability. Besides, the product features stable operation, good comfort and low noise.

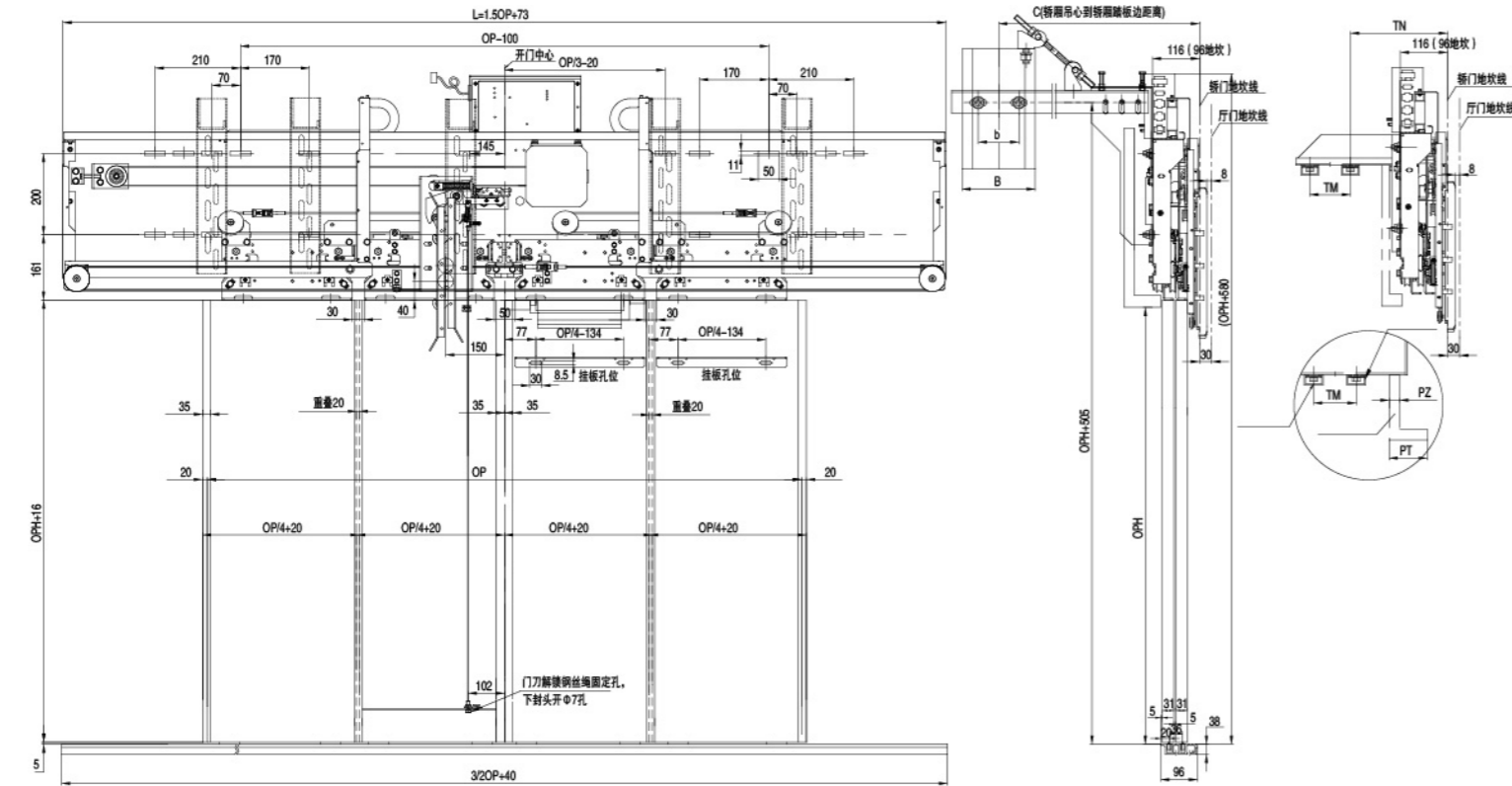
Good adaptability: The design of wide voltage input tape supports input voltage of $220V \pm 20\%$, suitable for synchronous door vane, asynchronous door vane and anti-pull asynchronous door vane as well as various complex environments in construction site.

Easy debugging: Normal debugging can be finished within 5 min, through server or knob.

Maturity and reliability: Since 2009, more than 200,000 sets have been put into normal operation, with few faults.

Other functions: fault memory protection, adjustable door vane opening/closing curve, synchronous/asynchronous door vane selection, slow closing under outage, encoder fault protection, adjustable optional torque

JC-4C96E2中分双折门系统 / JC-4C96E2 Center Open Four Panel Door System

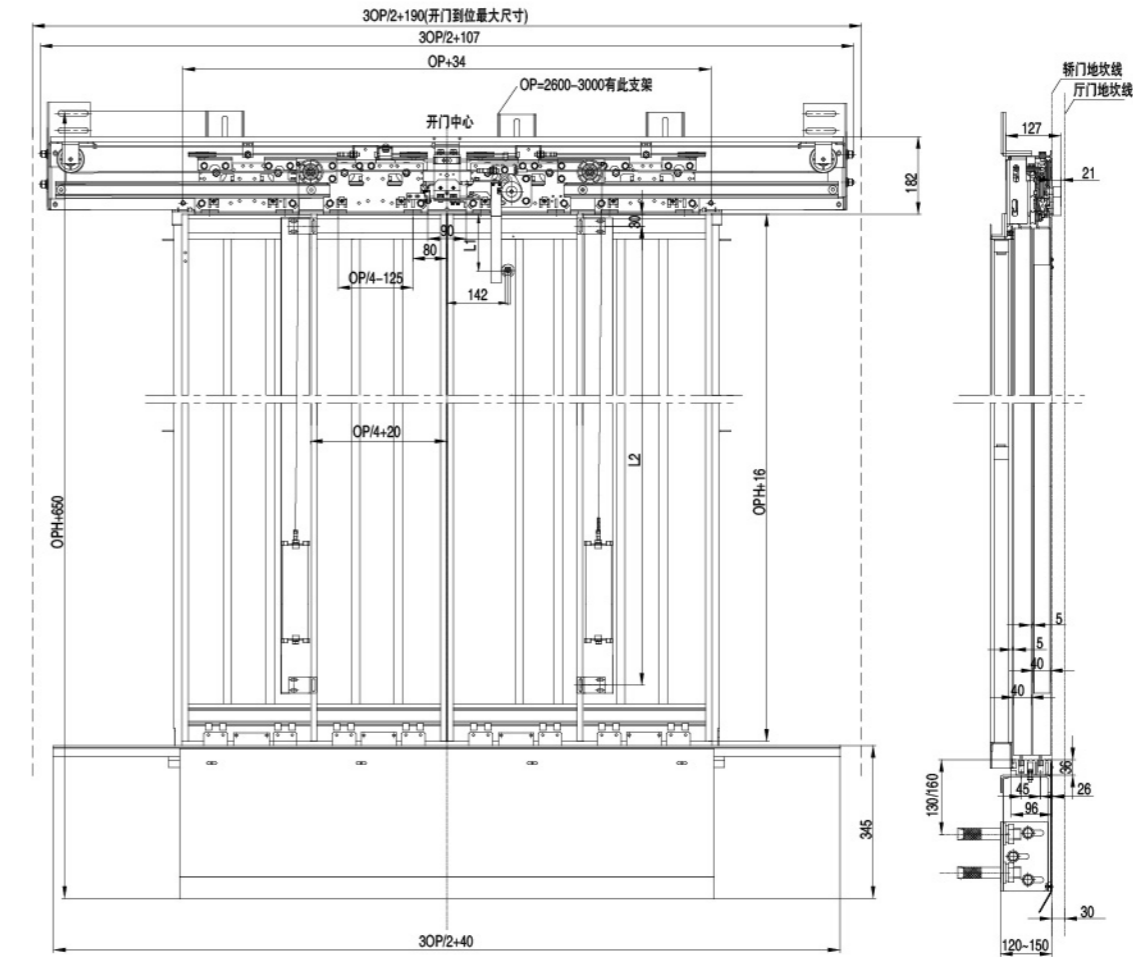


参考尺寸表 / Data Sheet

单位 / Unit: mm

OP (净开门宽度 / Clear Opening Width)	1200	1300	1400	1500	1600	1700	1800	1900	2000	2100	2200	2300	2400	2500	2600	2700	2800	2900	3000
L	1873	2023	2173	2323	2473	2623	2773	2923	3073	3223	3373	3523	3673	3823	3973	4123	4273	4423	4573
C	根据要求确定 / As per Request																		
K1	默认值为100, 也可根据要求确定 / Default Value: 100, or As per Request																		
SW	默认值为180, 也可根据要求确定 / Default Value: 180, or As per Request																		
HS	默认值 / Default Value: OPH+505																		
门刀结构 / Door Vane Structure	集成轿门锁同步门刀, 门刀有效长度320mm / Integrated Door Lock Synchronous Door Cam, Effective length of door cam 320mm																		
安装方式 / Installation Mode	直梁安装(标配) Straight Beam Installation Mode(Standard) / 轿顶安装(选配) Car Top Installation Mode(Optional)																		

LD-4C96A-O中分层门系统 / LD-4C96A-O Center Open Landing Door System



OPH	2000	2100	2200	2300	2400	2500	2600	OP	1200-1800	1900-3000
L1	134	134	320	434	434	634	634	L2	1560	1960

参考尺寸表 / Data Sheet (备注: OPH覆盖范围可覆盖到3000)

单位 / Unit: mm

OP (净开门宽度 / Clear Opening Width)	1200	1300	1400	1500	1600	1700	1800	1900	2000	2100	2200	2300	2400	2500	2600	2700	2800	2900	3000
L	1890	2140	2290	2440	2590	2740	2890	3040	3190	3340	3490	3640	3790	3940	4090	4240	4390	4540	4690
OPH	2000-2600																		

净开门宽: ≤1400mm

Net opening width (OP): ≤1400mm

净开门高度: 2000-2600mm

Net opening height: 2000-2600mm

开门类型: 中分2扇开门

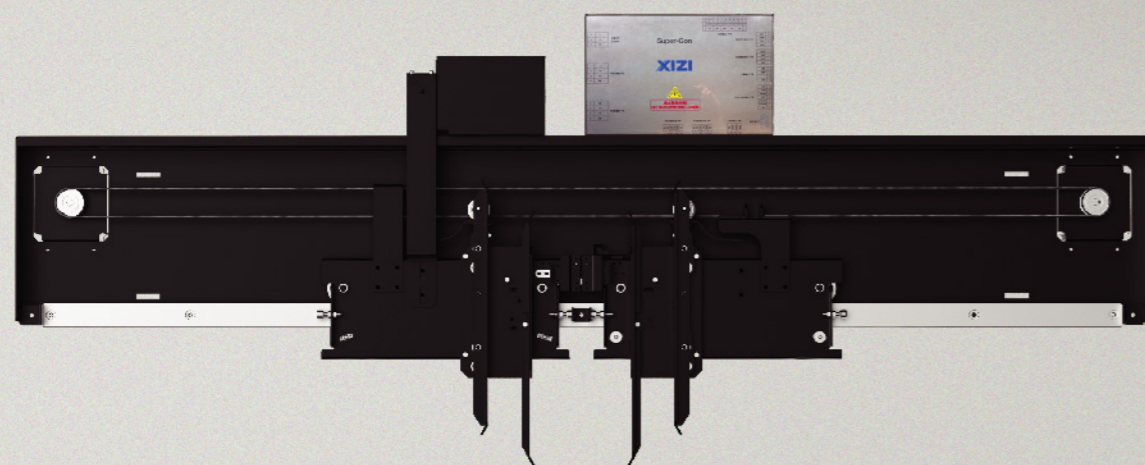
Opening type: center opening two-panel

最短开门时间: 2S (开门宽度为1400mm时)

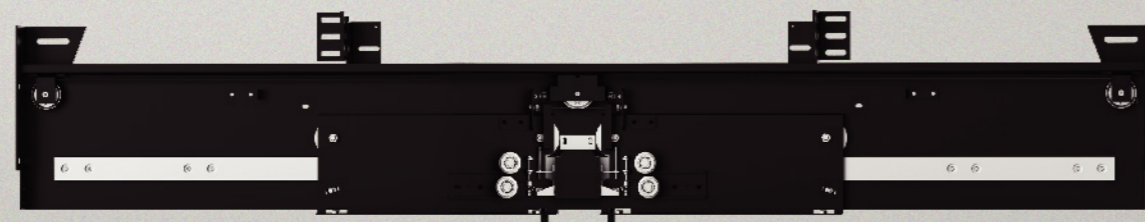
Minimum opening time: 2s (under opening width of 1400mm)

开门过程平均噪声≤50dB(A)

Average noise during opening≤50dB(A)



SC-2C75E



SLD

Super-Con中分高端门系统

Super-Con Center Open High-End Door System

该门系统是经过西子对高速梯的潜心研究,最新开发的一款新型高端产品,为客户提供了在高速电梯门系统上的解决方案。同时,此款产品采用了先进的技术、优质的材料及精湛的工艺,力求卓越的品质及性能。适用于4-10m/s高速电梯和对性能要求高的高端电梯。

The door system is a new-type upper-end product developed by Xizi based on concentrated research on high-speed elevator, providing a solution of high-speed elevator door system for customers. To bring excellent quality and performance, the product adopts advanced technology, high-quality material and consummate process, suitable for elevator in the range 4~10m/s and upper-end elevator intended for high performance.

自主产权: 产品拥有独立知识产权,为我司自主设计制造,经电梯专家委员会鉴定达到国际先进水平。

低音高效: 噪音仅50dB(A);最短开门时间2s,国内开门效率最高的门机之一,适应高效的流量管理。

安全性高: 采用电子轿门锁,有效防止非平层区扒开门,确保乘客安全(选配)。

冗余设计: 采用双电机工作及双门刀驱动,采用冗余设计,即使其中一个电机失效会自动降速运行,驱动时可拖动400kg负载。

调试便捷: 采用“无线调试”功能,即调试人员不需站在轿顶工作,既安全,又可缩短调试时间。

节能防水: 采用永磁同步电机,节能效果显著,与变频电机相比,节能超过50%,还特别采用独特的防水设计,确保产品安全可靠,防护等级IP54。

适配性强: 采用适应高楼层的土建误差设计,有效适应高速电梯的水平晃动。

其它特性: 具备故障预警功能;可匹配防火门和防火隔热门板。

Proprietary intellectual property right: The product is independently designed and manufactured by our company, with independent intellectual property right. As identified by Committee of Elevator Experts, the product reaches international advanced level.

Low noise, high efficiency: The product is 50 dB (A) in noise and 2s in minimum opening time, which makes it one of the domestic door operators with the highest opening efficiency. On the basis, it is suitable for high-efficiency flow management.

High safety: Electronic car door lock (optional) can effectively prevent door pull out of leveling zone thus guarantee passenger safety.

Redundancy design: Depending on the redundancy design (dual-motor work, dual-door vane driving), speed-down operation will be automatically entered if one motor fails. A load of 400kg can be dragged at driving.

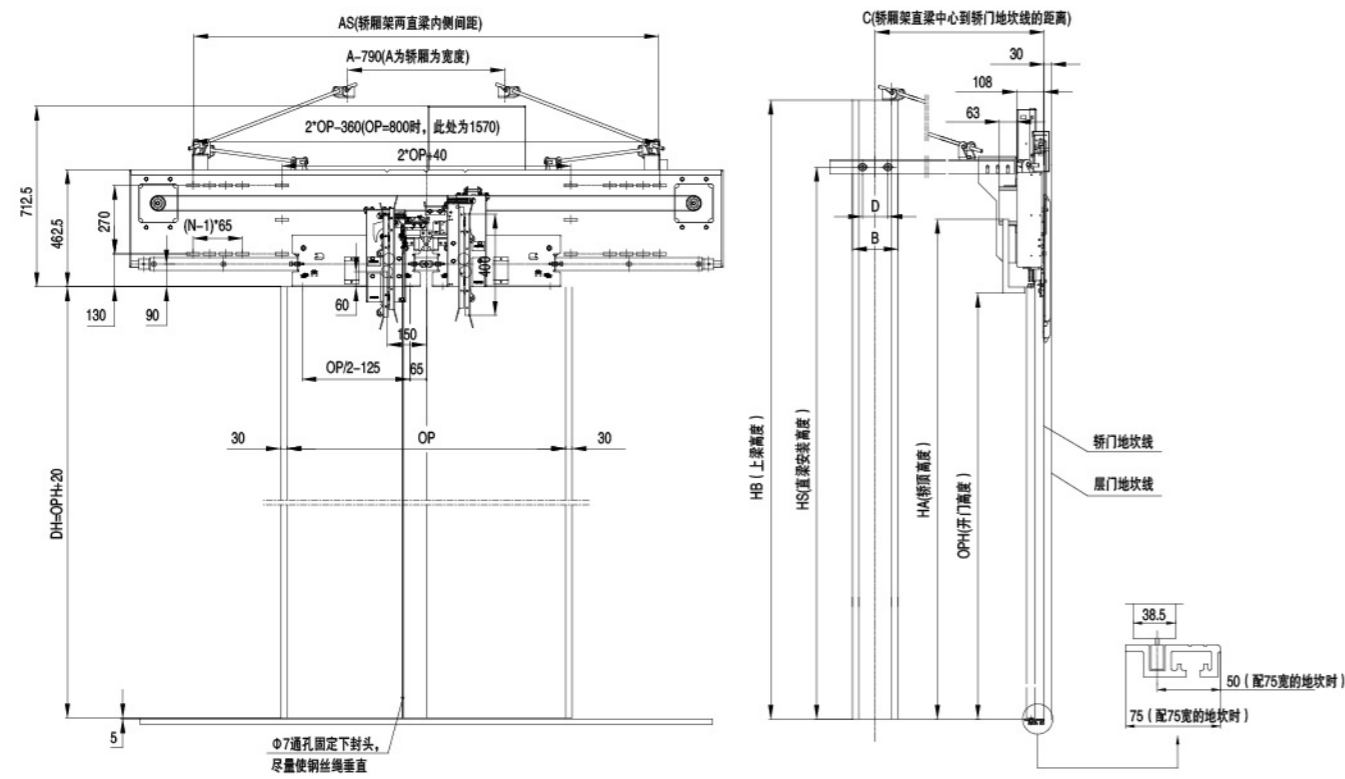
Easy debugging: Depending on the function “wireless debugging”, debugging staffs do not have to stand on car. This guarantees safety and saves time.

Energy saving, waterproofing: Permanent-magnetic synchronous motor has significant energy-saving effect compared to VF motor, saving energy by more than 50%. Moreover, its unique waterproof design guarantees safety and reliability, and brings protection class up to IP54.

Strong adaptability: The design suitable for high rise civil work error allows horizontal swing of high-speed elevator.

Other characteristics: fault warning; matching with fire door panel and insulated fire door panel.

SC-2C75E中分门系统 / SC-2C75E Center Open Door System

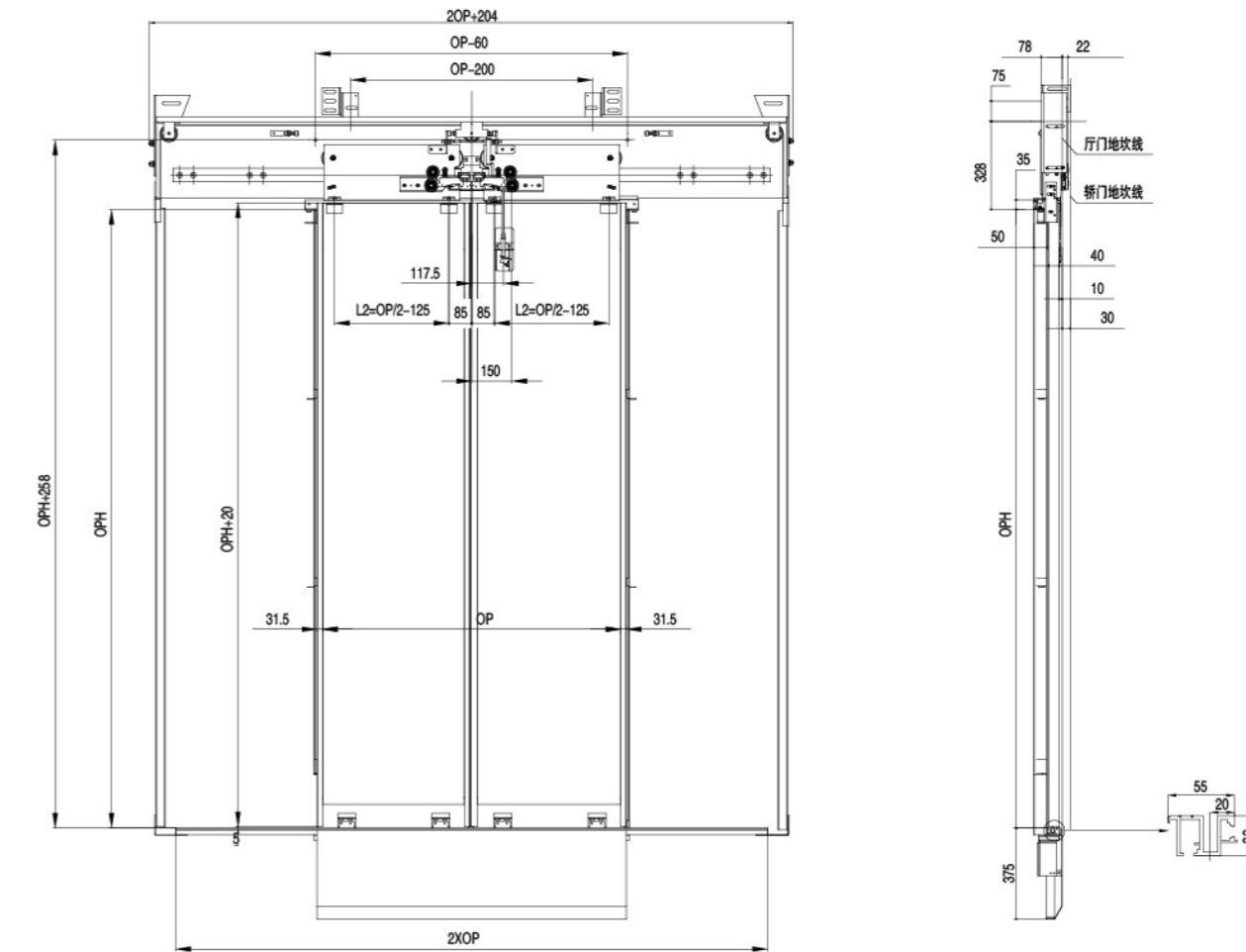


参考尺寸表 / Data Sheet

单位 / Unit: mm

OP (净开门宽度 / Clear Opening Width)	800	900	1000	1100	1200	1300	1400
A (轿厢外宽度 / Car External Width)	A≤1550	A≤1550	1250≤A≤1620	1250≤A≤1620	1250≤A≤1620	1250≤A≤1620	1250≤A≤1620
L	1930	1930	2130	2330	2530	2730	2930
AS	根据要求确定 / as per Request						
A	根据要求确定 / as per Request						
B	默认值为180, 也可根据要求确定 / Default Value: 180, or as per Request						
C	根据要求确定 / as per Request						
D	默认值为100, 也可根据要求确定 / Default Value: 100, or as per Request						
N	4	5	6	6	7		
门刀结构 / Door Vane Structure	集成轿门锁同步门刀, 门刀有效长度320mm / Integrated Door Lock Synchronous Door Cam, Effective length of door cam 320mm						
安装方式 / Installation Mode	直梁安装 Straight Beam Installation Mode / 轿顶安装 Car Top Installation Mode / 前壁安装 Lintel Installation						

SLD中分层门系统 / SLD Center Open Landing Door System



参考尺寸表 / Data Sheet

单位 / Unit: mm

OP (净开门宽度 / Clear Opening Width)	800	900	1000	1100	1200	1300	1400
L1=2OP+204	1804	2004	2204	2404	2604	2804	3004
L2	275	325	375	425	475	525	575

净开门宽: 700~1200mm

Net opening width (OP): 700~1200mm

净开门高度: 2000~2400mm

Net opening height: 2000~2400mm

开门类型: 中分2扇开门

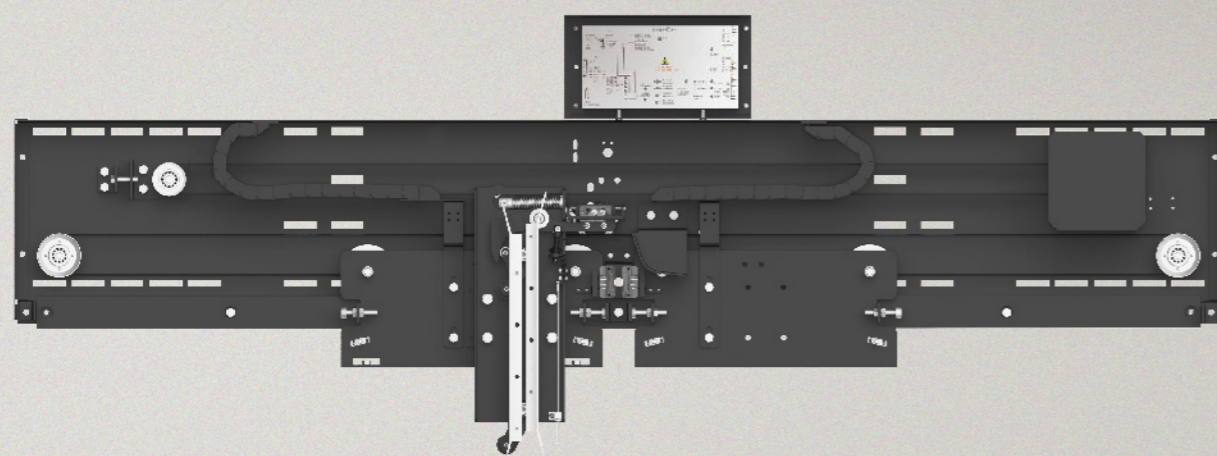
Opening type: center opening two-panel

最短开门时间: 2.2s (开门宽度为1200mm时)

Minimum opening time: 2.2s (under opening width of 1200mm)

开门过程平均噪声 $\leq 52\text{dB(A)}$

Average noise during opening $\leq 52\text{dB(A)}$



Super-II



SLD2

Super-II 中分高端门系统

Super-II Center Open High-End Door System

该门系统是经过对西子中高速梯的潜心研究, 最新开发的一款新型中高端门系统, 为客户提供了中速梯的解决方案。同时, 次款产品采用先进的技术, 优质的材料及精湛的工艺, 力求卓越的品质及性能。

The door system is a new-type high-end product developed by Xizi via concentrated research on high-speed elevator, providing a solution of high-speed elevator door system for customers. To bring excellent quality and performance, the product adopts advanced technology, high-quality material and exquisite techniques, suitable for elevator intended for superior performance.

自主产权: 产品拥有独立知识产权, 为我司自主设计制造。

低音高效: 噪音仅52dB(A);最短开门时间2.2s, 开关门效率较高, 适应高效的流量管理。

节能防水: 采用永磁同步电机, 节能效果显著, 与变频电机相比, 节能超过50%, 还特别采用独特的防水设计, 确保产品安全可靠, 防护等级IP54。

适配性强: 采用适应高楼层的土建误差设计。

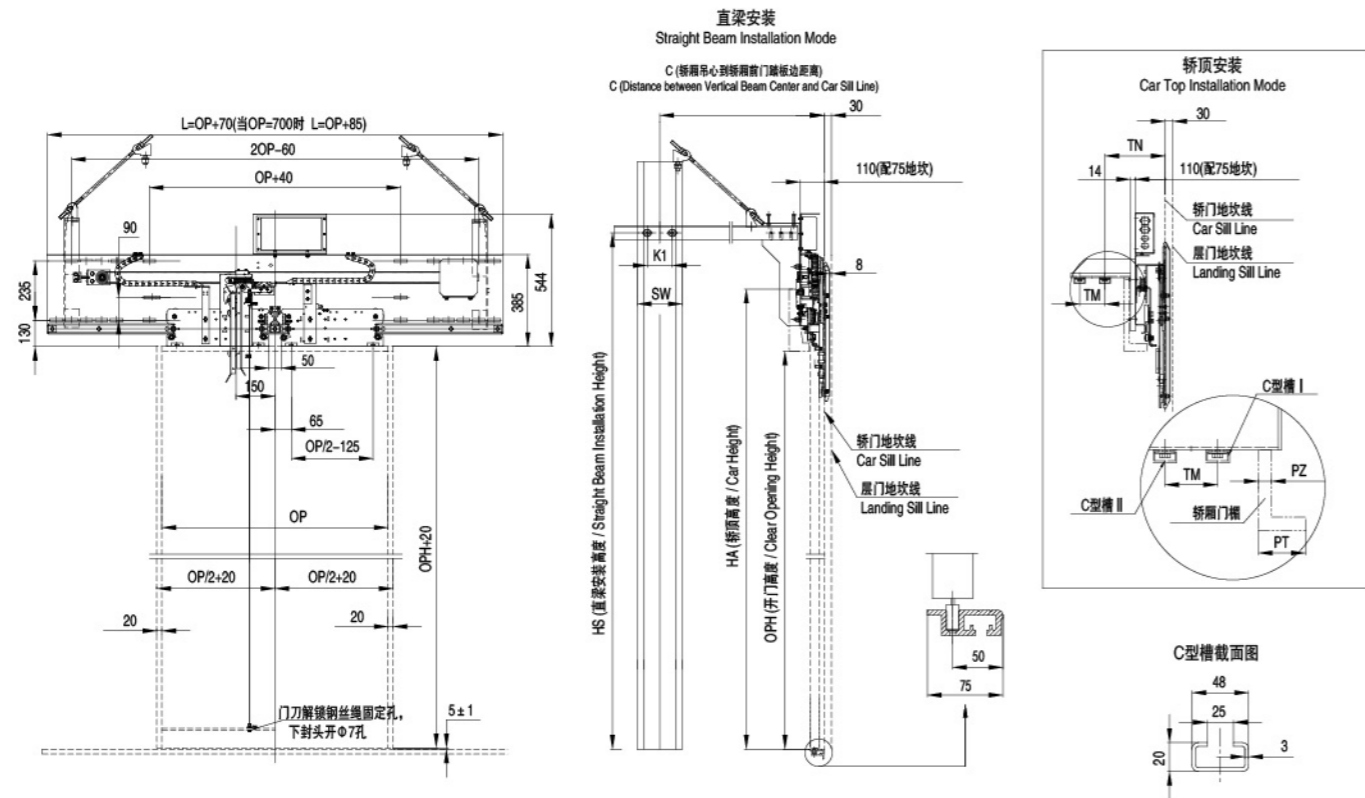
Proprietary intellectual property right: The product is independently designed and manufactured by our company, with independent intellectual property right. As identified by Committee of Elevator Experts, the product reaches international advanced level.

Low noise, high efficiency: The product is of 52 dB (A) in noise and 2.2s in minimum opening time, which makes it one of the domestic door operators with the highest opening efficiency. Thus it is suitable for high-efficiency flow management.

Energy saving, waterproofing: Permanent-magnetic synchronous motor has significant energy-saving effect compared to VF motor, saving energy by more than 50%. Moreover, its unique waterproof design guarantees safety and reliability, and brings protection class up to IP54.

Strong adaptability: The design suitable for high rise civil work error allows horizontal swing of high-speed elevator.

Super-II中分门系统 / Super-II Center Open Door System

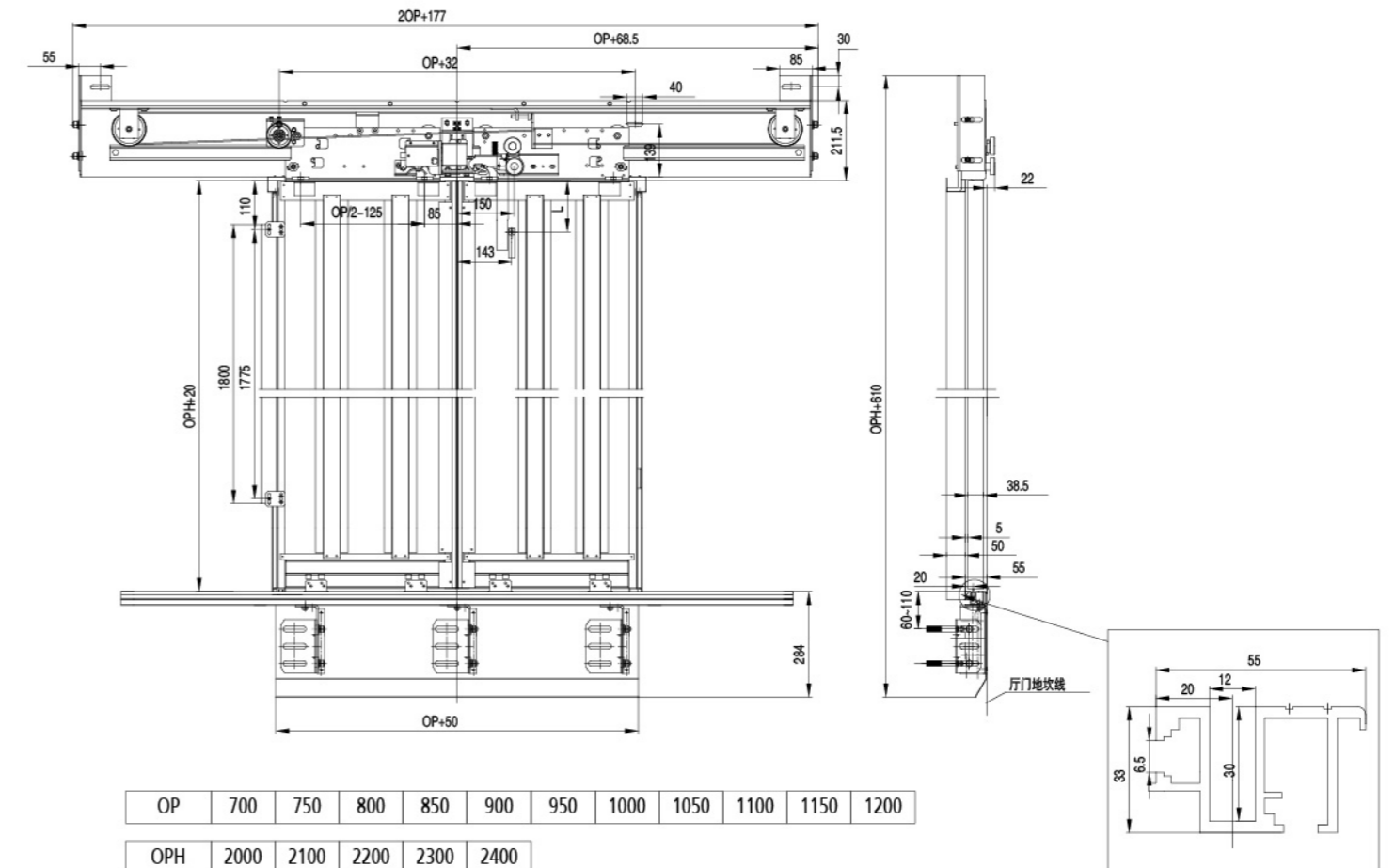


参考尺寸表 / Data Sheet

单位 / Unit: mm

OP (净开门宽度 / Clear Opening Width)	700	750	800	850	900	950	1000	1050	1100	1150	1200
L	1485	1570	1670	1770	1870	1970	2070	2170	2270	2370	2470
AS	根据要求确定 / as per Request										
HS	默认值: OPH+405/OPH+505 / Default Value: OPH+405/OPH+505										
A	根据要求确定 / as per Request										
SW	默认值为180, 也可根据要求确定 / Default Value: 180, or as per Request										
HA	根据要求确定 / as per Request										
K1	默认值为100, 也可根据要求确定 / Default Value: 100, or as per Request										
TM	轿顶C型槽之间的间距, 默认值: 100mm / Distance between C Grooves on Car Top, Default Value: 100mm										
TN	C型槽II的中心距离轿门地坎外沿的距离 / Distance between C Groove II Center and Car Door Sill outer Line										
门刀结构 / Door Vane Structure	集成轿门锁同步门刀, 门刀有效长度320mm / Integrated Door Lock Synchronous Door Cam, Effective length of door cam 320mm										
安装方式 / Installation Mode	直梁安装 Straight Beam Installation Mode / 轿顶安装 Car Top Installation Mode										

SLD2中分层门系统 / SLD2 Center Open Landing Door System



OP	700	750	800	850	900	950	1000	1050	1100	1150	1200
OPH	2000	2100	2200	2300	2400						
L		134		334							

防火层门系统 Fire Door System

我司已获得如下种类和地区的防火门证书

中国防火门GB/T24480-2009标准：中分（E120），旁开双折（E120），中分双折（E120）。

新西兰防火门BRANZ认证：中分（E120）。

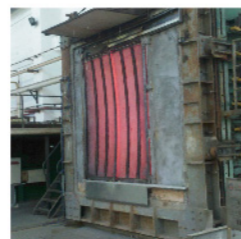
备注：E代表完整性；数字代表测试时间（单位分钟）。

We have already acquired following approvals for our fire door.

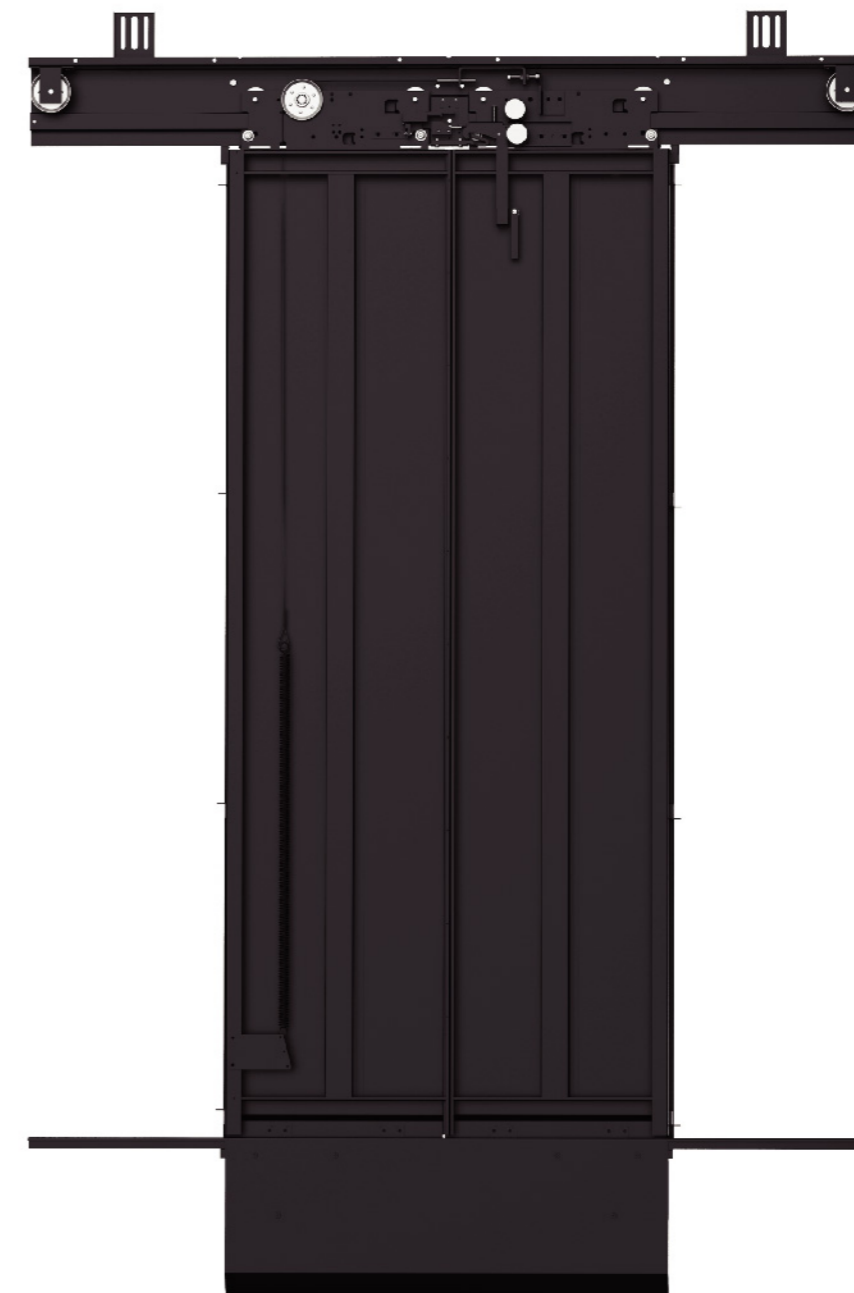
Approved against Chinese GB/T24480-2009 Standard: Center Open (E120), Side Open (E120), Center Open Four Panel (E120).

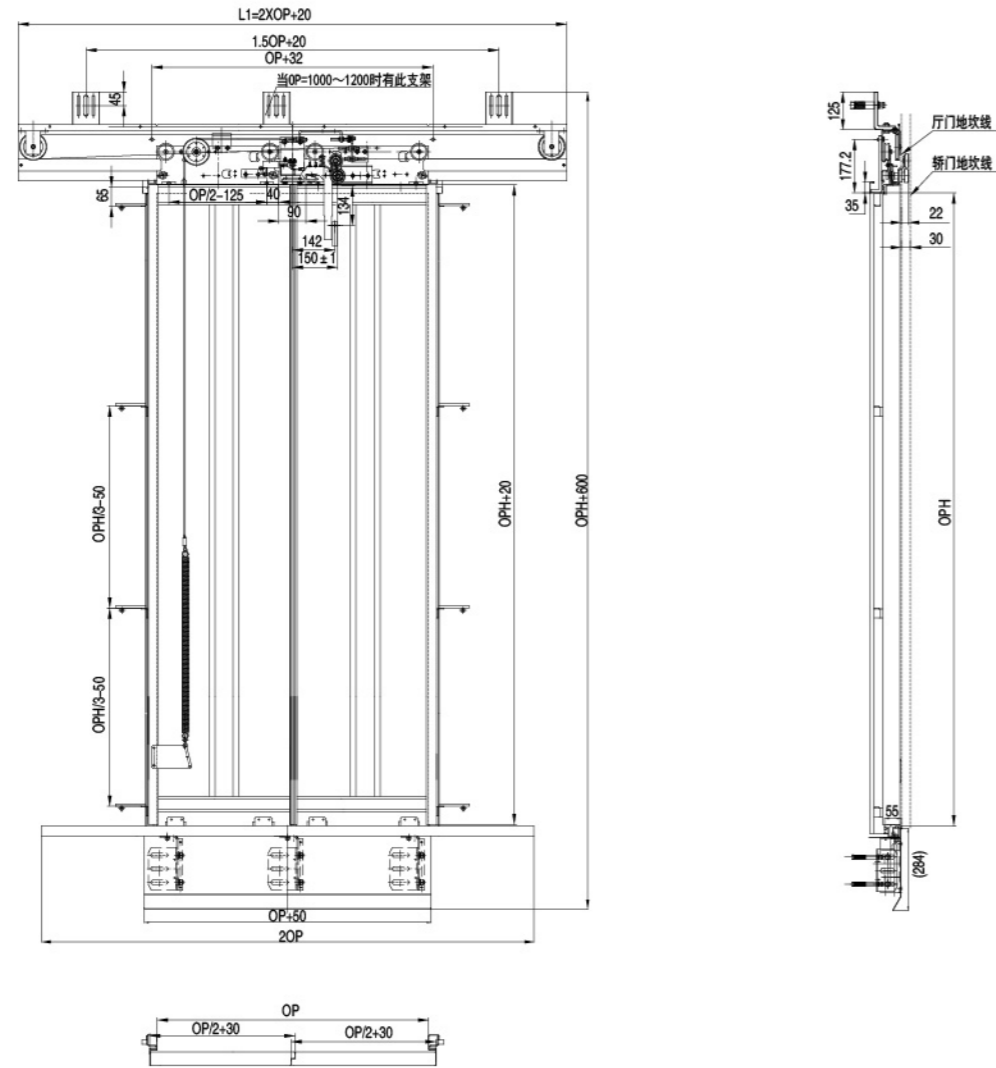
Approved against New Zealand BRANZ Standard: Center Open (E120).

Remarks: E stands for Integrity; and the digits stands for the duration in Minutes.



中分防火层门系统 / Center Open Fire Door System





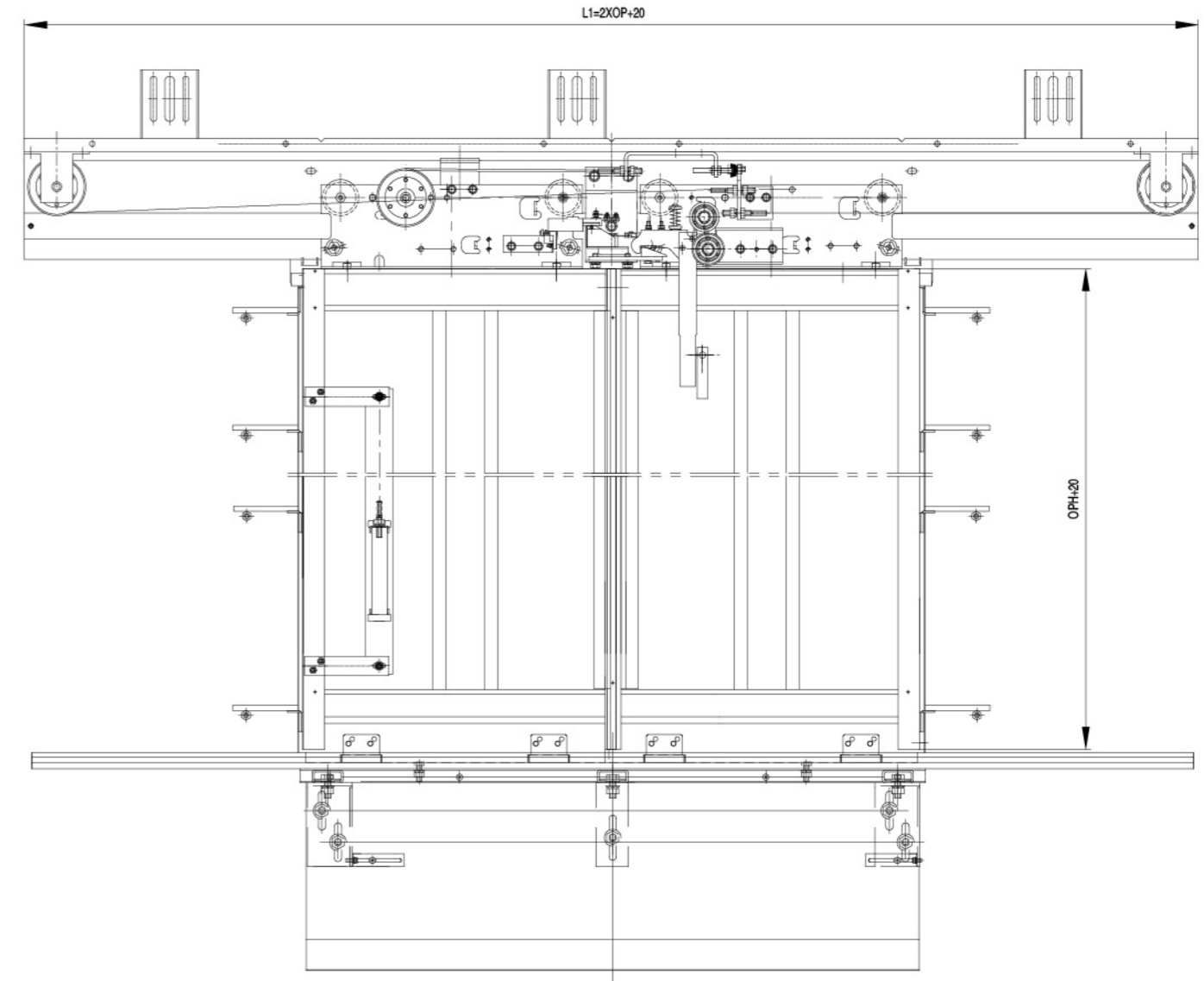
参考尺寸表 / Data Sheet

中国NETEL认证 / Chinese NETEL Approval

单位 / Unit: mm

OP (净开门宽度 / Clear Opening Width)	700	800	900	1000	1100	1200
OPH	2000~2400					
L1=2OP+20	1420	1620	1820	2020	2220	2420

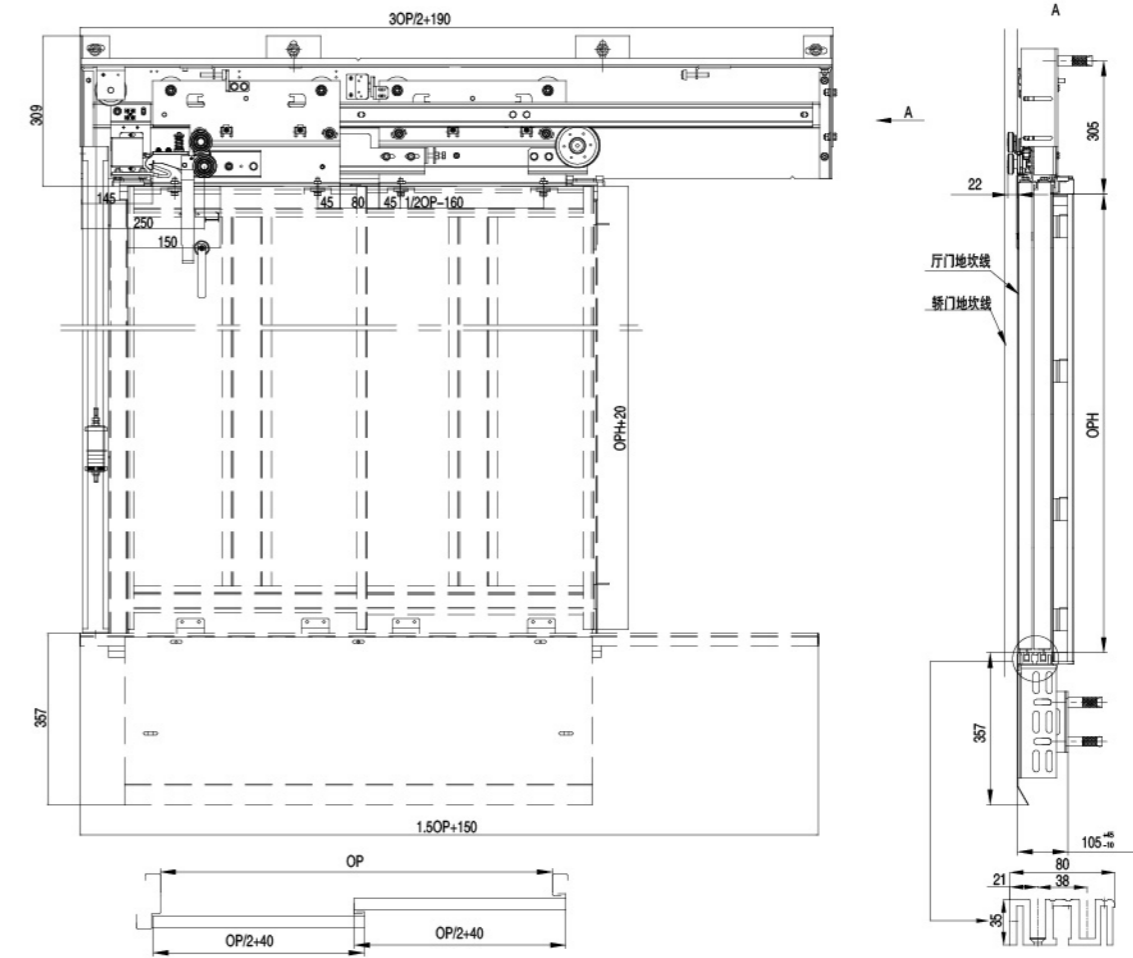
当OP=1200时, 选用该图
When OP=1200, Following Drawing is Applicable



旁开防火层门系统 / Side Open Landing Fire Door System



土建图 (中国NETEC认证) / Construction Drawing (NETEC Approval)



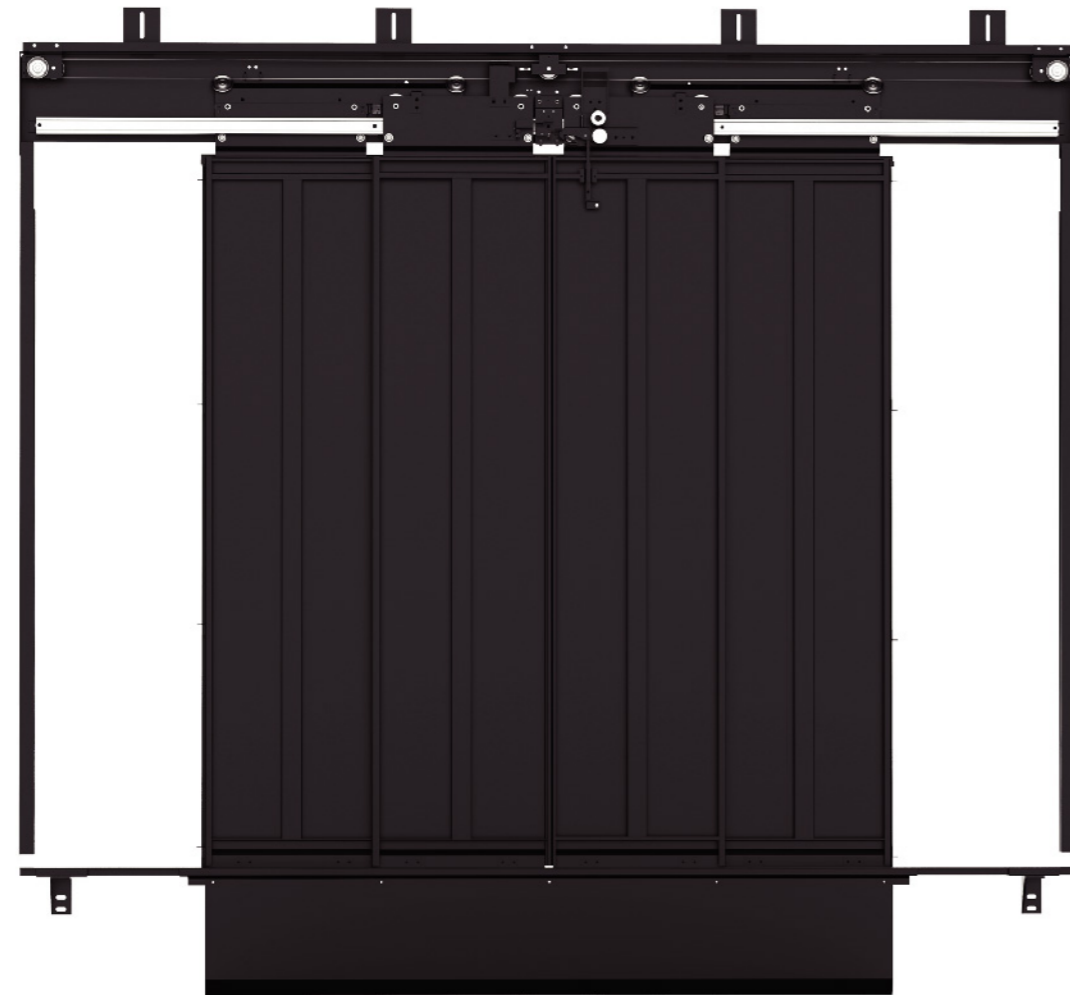
参考尺寸表 / Data Sheet

中国NETEL认证 / Chinese NETEL Approval

单位 / Unit: mm

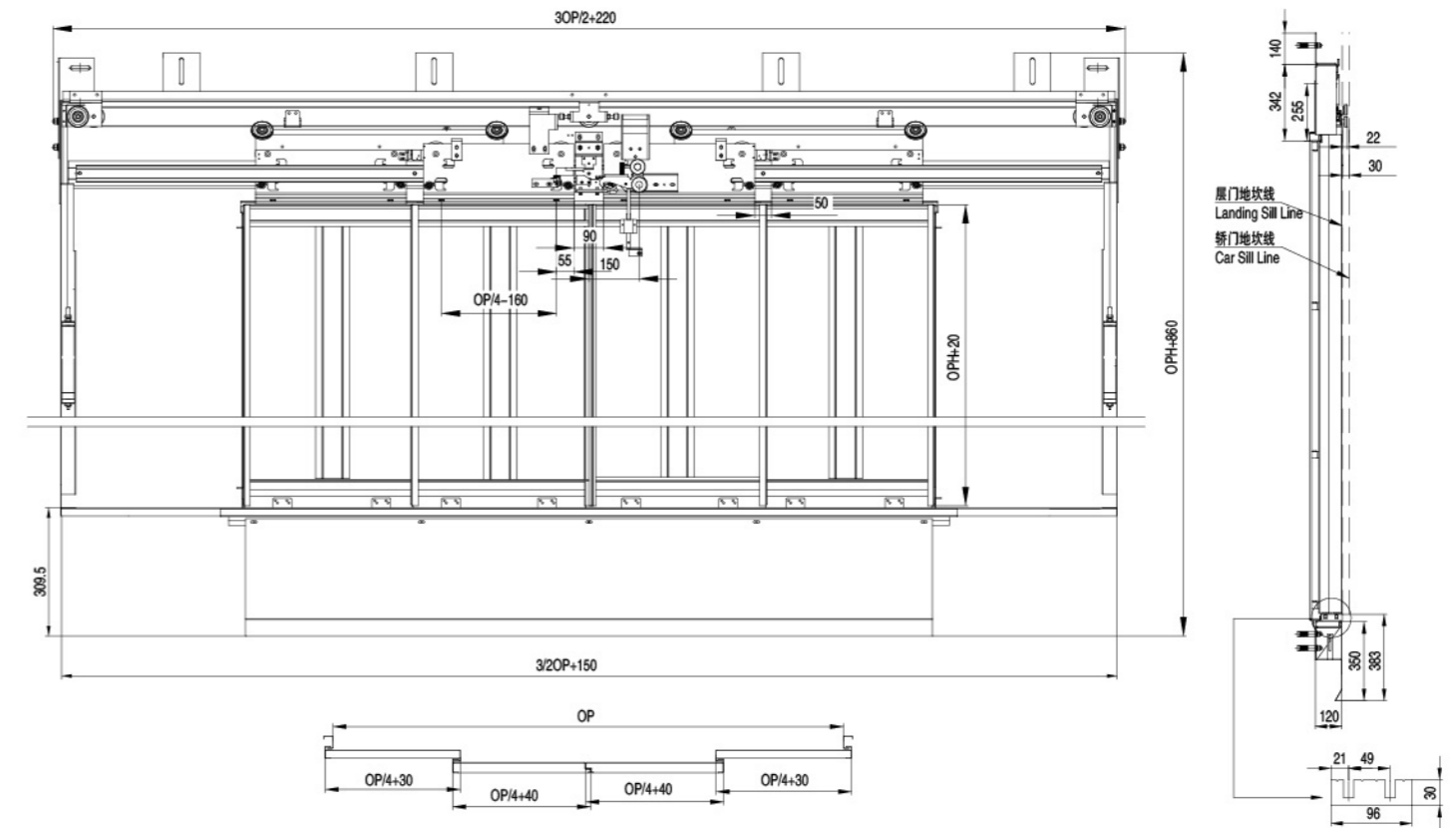
OP (净开门宽度 / Clear Opening Width)	700	750	800	850	900	950	1000	1050	1100	1150	1200	1250	1300	1350	1400	1450	1500	1550	1600	1650	1700	1750	1800
OPH	2000~2400																						
30P/2+190	1240	1315	1390	1465	1540	1615	1690	1765	1840	1915	1990	2065	2140	2215	2290	2365	2440	2515	2590	2665	2740	2815	2890

中分双折防火层门系统 / Center Open Four Panel Fire Door System



Professional components supplier

土建图 / Construction Drawing



适用材质如下: 门板材质: 钢板, 不锈钢; 门套材质: 钢板
 Applicable for: Door Panel made from: Steel Sheet, Stainless Steel Sheet. Jamb made from: Steel Sheet.

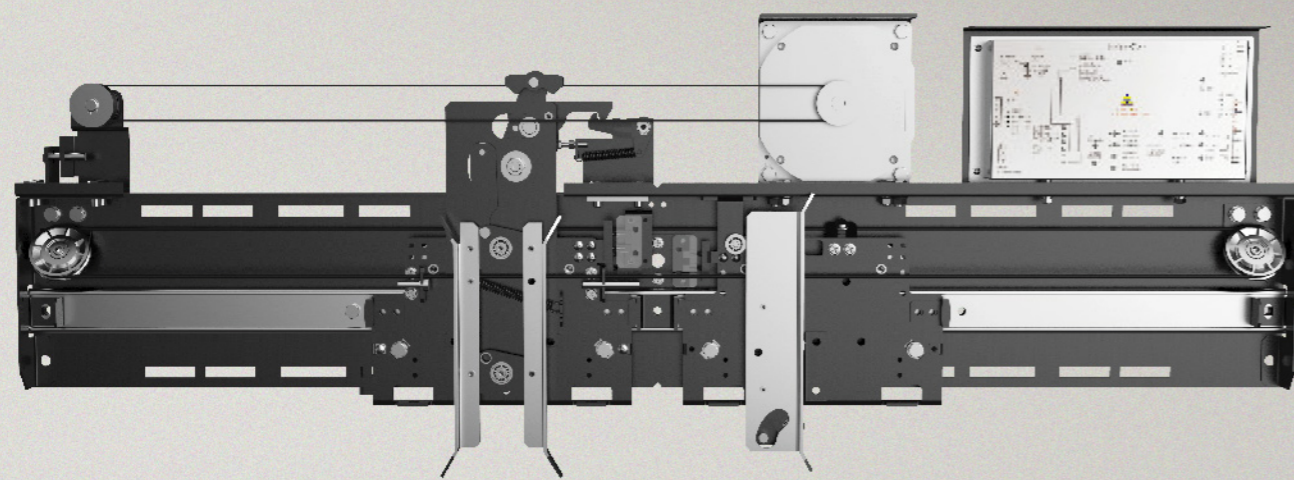
Professional components supplier

参考尺寸表 / Data Sheet

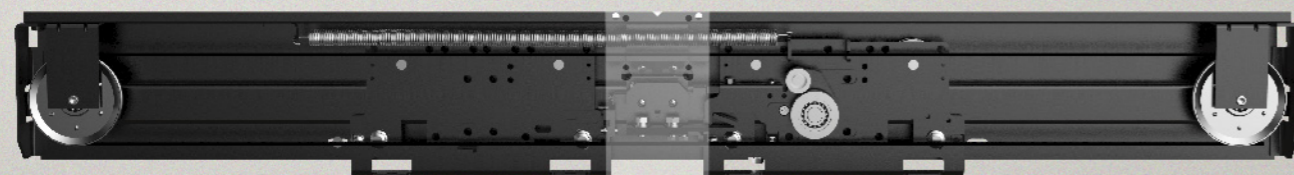
单位 / Unit: mm

OP (净开门宽度 / Clear Opening Width)	1200	1300	1400	1500	1600	1700	1800	1900	2000	2100	2200	2300	2400	2500
OPH	2000~2400													
3OP/2+220	2020	2170	2320	2470	2620	2770	2920	3070	3220	3370	3520	3670	3820	3970

净开门宽: 600~800mm
Net opening width (OP): 600~800mm
净开门高度: 1900~2200mm
Net opening height: 1900~2200mm
开门类型: 中分2扇开门
Opening type: center opening two-panel



JC-2C50D-H



LD-2C50-H

Jarless-Con中分家用梯门系统 Jarless-con Center Open Household Door System

该门机采用我公司自主研发的永磁同步电机驱动,使用闭环控制,具有节能高效、结构紧凑、井道利用率高、安装方便等优点。

The door is independently developed by our company, subject to permanent-magnetic synchronous motor driving and closed loop control. It has advantages of energy saving, high efficiency, compact structure, high use ratio of hoistway and easy installation.

自主知识产权: 变频器和电机独立知识产权, 自主设计制造。

控制精确: 采用最新无级调速度变频控制的门驱动系统控制, 闭环矢量控制, 实时速度反馈, 调速精确度达到0.1%。

可靠设计: 主要机械部件采用标准化设计, 严格的三维建模、有限元分析等设计验证, 机械结构和控制系统均通过部件的可靠性测试、异常状态测试、功能测试等部件验证; 整机更是通过严酷的异常状态测试、功能测试以及50万次运行的可靠性测试验证, 确保了产品的可靠性。同时产品具有运行平稳、舒适度高、低噪音等特点。

适应性高: 输入宽电压带设计, 输入电压 $220V \pm 20\%$; 抗工地各种复杂环境。

调试简单: 服务器调试或旋钮调试, 5分钟可完成正常调试。

其他功能: 独特的障碍点记忆保护功能; 门刀打开/闭合曲线可调功能; 停电慢关门功能; 编码器故障保护功能; 夹入检出力矩可选功能等。

Intellectual property rights: own the intellectual property rights of frequency converter and motor, which are designed and manufactured by ourselves.

Accurate control: adopts the latest stepless speed regulation frequency control door driving system, loop vector control and real time speed feedback. Speed regulating accuracy can reach to 0.1%.

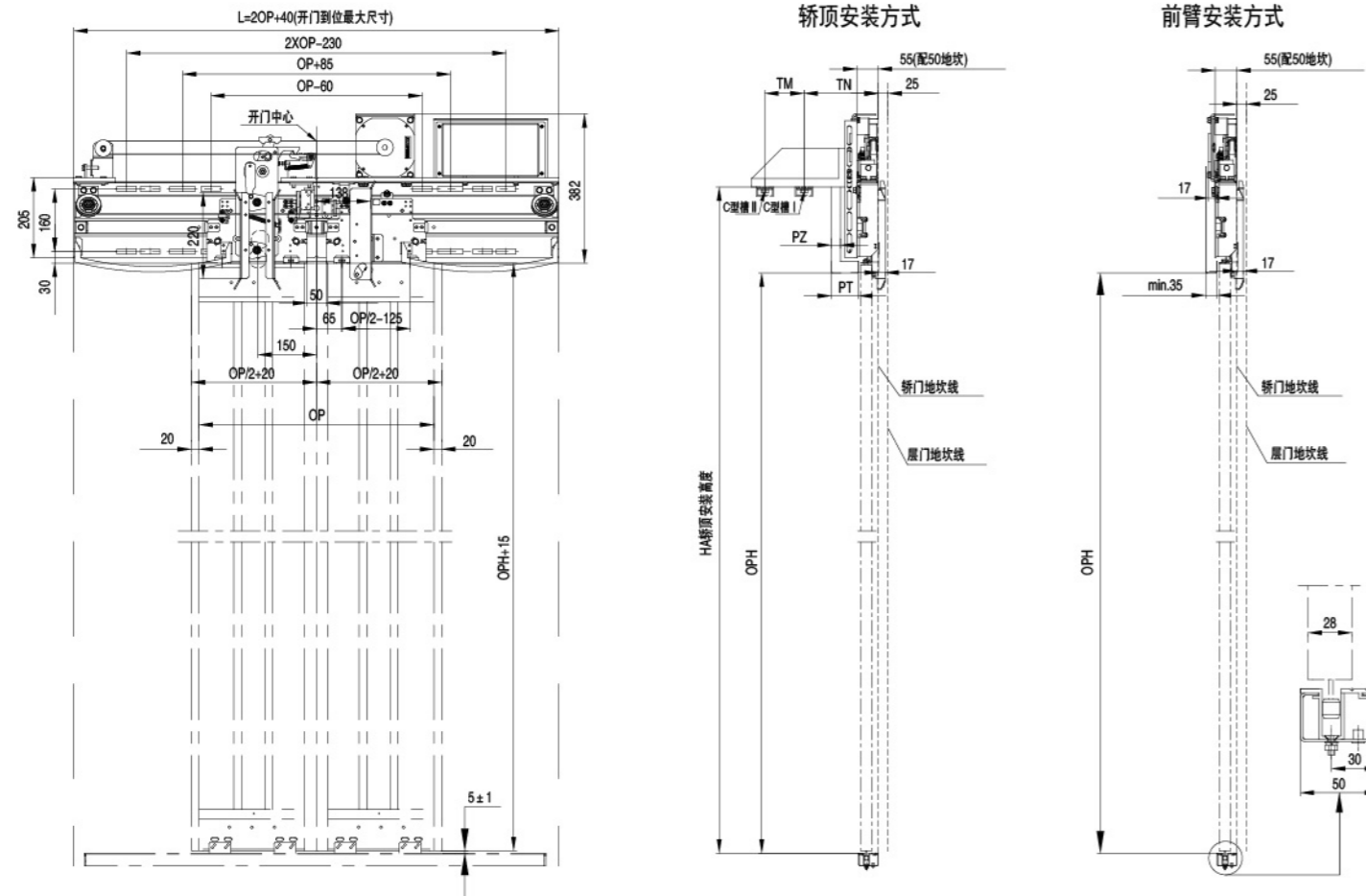
Reliable design: Main mechanical components are subject to standardized design and strict design verification (3D modeling, finite element analysis, etc.). Both mechanical structure and control system are subject to component verification (reliability test, abnormality test, functional test, etc.). Even more, the whole unit is subject to rigorous abnormality test, functional test and 500 thousand operations test. These guarantee product reliability. Besides, the product features stable operation, good comfort and low noise.

Good adaptability: The design of wide voltage input tape supports input voltage of $220V \pm 20\%$, suitable for synchronous door vane, asynchronous door vane and anti-pull asynchronous door vane as well as various complex environments in construction site.

Easy debugging: Normal debugging can be finished within 5 min, through server or knob.

Other functions: fault memory protection, adjustable door vane opening/closing curve, synchronous/asynchronous door vane selection, slow closing under outage, encoder fault protection, adjustable optional torque

JC-2C50D-H中分家用梯门系统 / JC-2C50D-H Center Open Household Door System

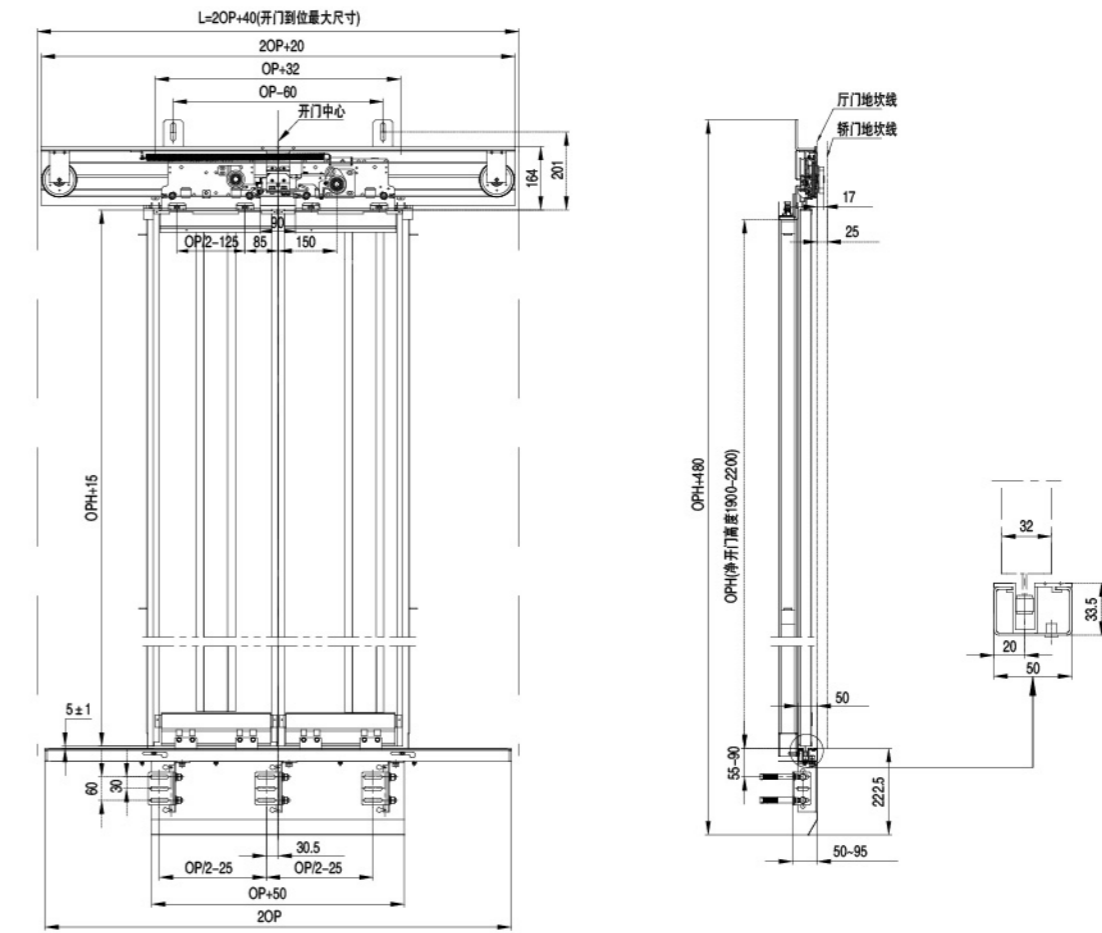


参考尺寸表 / Data Sheet

OP (净开门宽度 / Clear Opening Width)	600	650	700	750	800
L	1240	1340	1440	1540	1640
门刀结构 / Door Vane Structure	同步门刀 / Synchronous Door Cam				
安装方式 / Installation Mode	轿顶安装 / Car Top Installation Mode		前壁安装 / Lintel Installation		

单位 / Unit: mm

LD-2C50-H中分家用梯层门系统 / LD-2C50-H Center Open Household Landing Door System



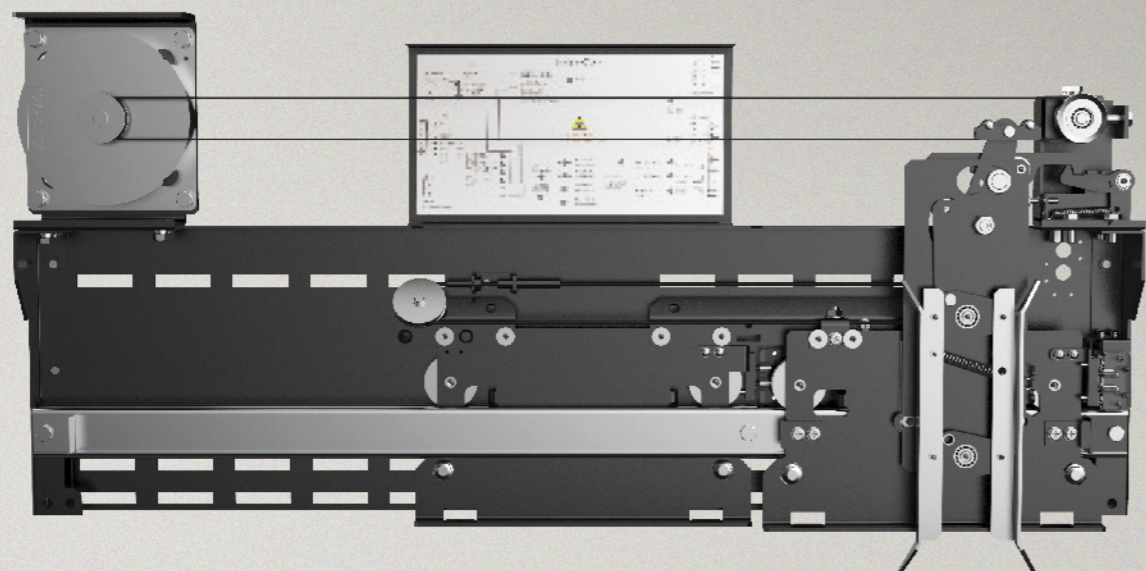
参考尺寸表 / Data Sheet

OP (净开门宽度 / Clear Opening Width)	600	650	700	750	800
L	1240	1340	1440	1540	1640

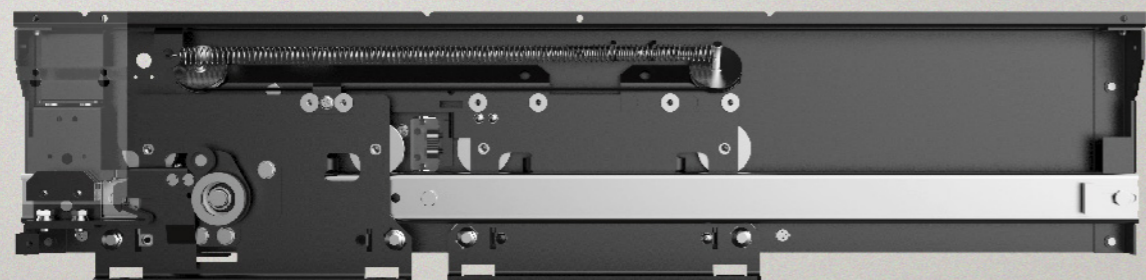
单位 / Unit: mm

备注: 适用门板类型, 钢板门OPH 1900-2200mm, 玻璃门OPH 1900-2100mm

净开门宽: 600~800mm
Net opening width (OP): 600~800mm
净开门高度: 1900-2200mm
Net opening height: 1900-2200mm
开门类型: 旁开2扇开门
Opening type: side opening two-panel



JC-2S70D-H



LD-2S70-H

Jarless-Con旁开家用梯门系统 Jarless-con Side Open Household Door System

该门机采用我公司自主研发的永磁同步电机驱动,使用闭环控制,具有节能高效、结构紧凑、井道利用率高、安装方便等优点。

The door is independently developed by our company, subject to permanent-magnetic synchronous motor driving and closed loop control. It has advantages of energy saving, high efficiency, compact structure, high use ratio of hoistway and easy installation.

自主知识产权: 变频器和电机独立知识产权, 自主设计制造。

控制精确: 采用最新无级调速度变频控制的门驱动系统控制, 闭环矢量控制, 实时速度反馈, 调速精确度达到0.1%。

可靠设计: 主要机械部件采用标准化设计, 严格的三维建模、有限元分析等设计验证, 机械结构和控制系统均通过部件的可靠性测试、异常状态测试、功能测试等部件验证; 整机更是通过严酷的异常状态测试、功能测试以及50万次运行的可靠性测试验证, 确保了产品的可靠性。同时产品具有运行平稳、舒适度高、低噪音等特点。

适应性高: 输入宽电压带设计, 输入电压 $220V \pm 20\%$; 抗工地各种复杂环境。

调试简单: 服务器调试或旋钮调试, 5分钟可完成正常调试。

其他功能: 独特的障碍点记忆保护功能; 门刀打开/闭合曲线可调功能; 停电慢关门功能; 编码器故障保护功能; 夹入检出力矩可选功能等。

Intellectual property rights: own the intellectual property rights of frequency converter and motor, which are designed and manufactured by ourselves.

Accurate control: adopts the latest stepless speed regulation frequency control door driving system, loop vector control and real time speed feedback. Speed regulating accuracy can reach to 0.1%.

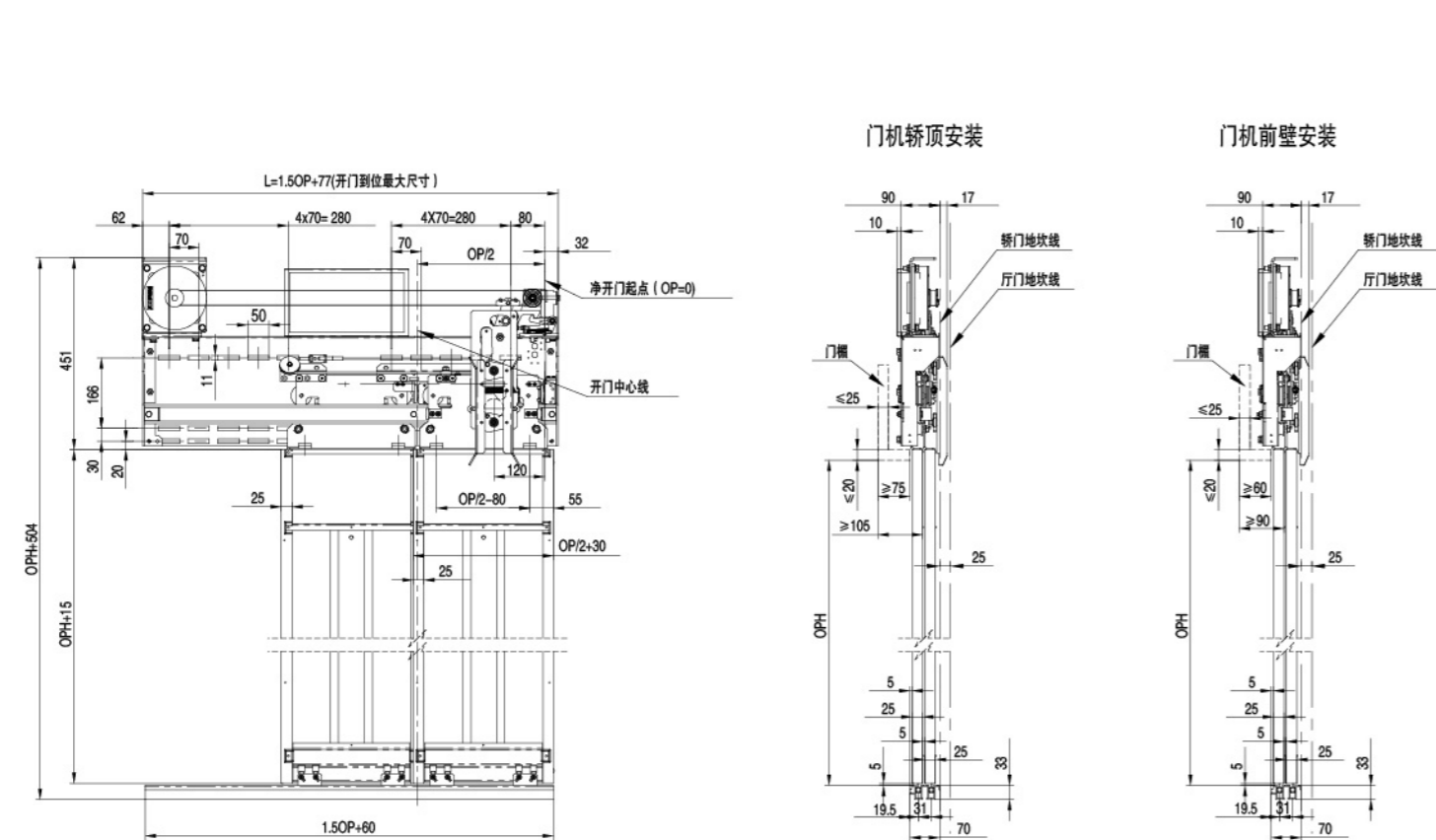
Reliable design: Main mechanical components are subject to standardized design and strict design verification (3D modeling, finite element analysis, etc.). Both mechanical structure and control system are subject to component verification (reliability test, abnormality test, functional test, etc.). Even more, the whole unit is subject to rigorous abnormality test, functional test and 500 thousand operations test. These guarantee product reliability. Besides, the product features stable operation, good comfort and low noise.

Good adaptability: The design of wide voltage input tape supports input voltage of $220V \pm 20\%$, suitable for synchronous door vane, asynchronous door vane and anti-pull asynchronous door vane as well as various complex environments in construction site.

Easy debugging: Normal debugging can be finished within 5 min, through server or knob.

Other functions: fault memory protection, adjustable door vane opening/closing curve, synchronous/asynchronous door vane selection, slow closing under outage, encoder fault protection, adjustable optional torque

JC-2S70D-H旁开家用梯门系统 / JC-2S70D-H Side Open Household Door System

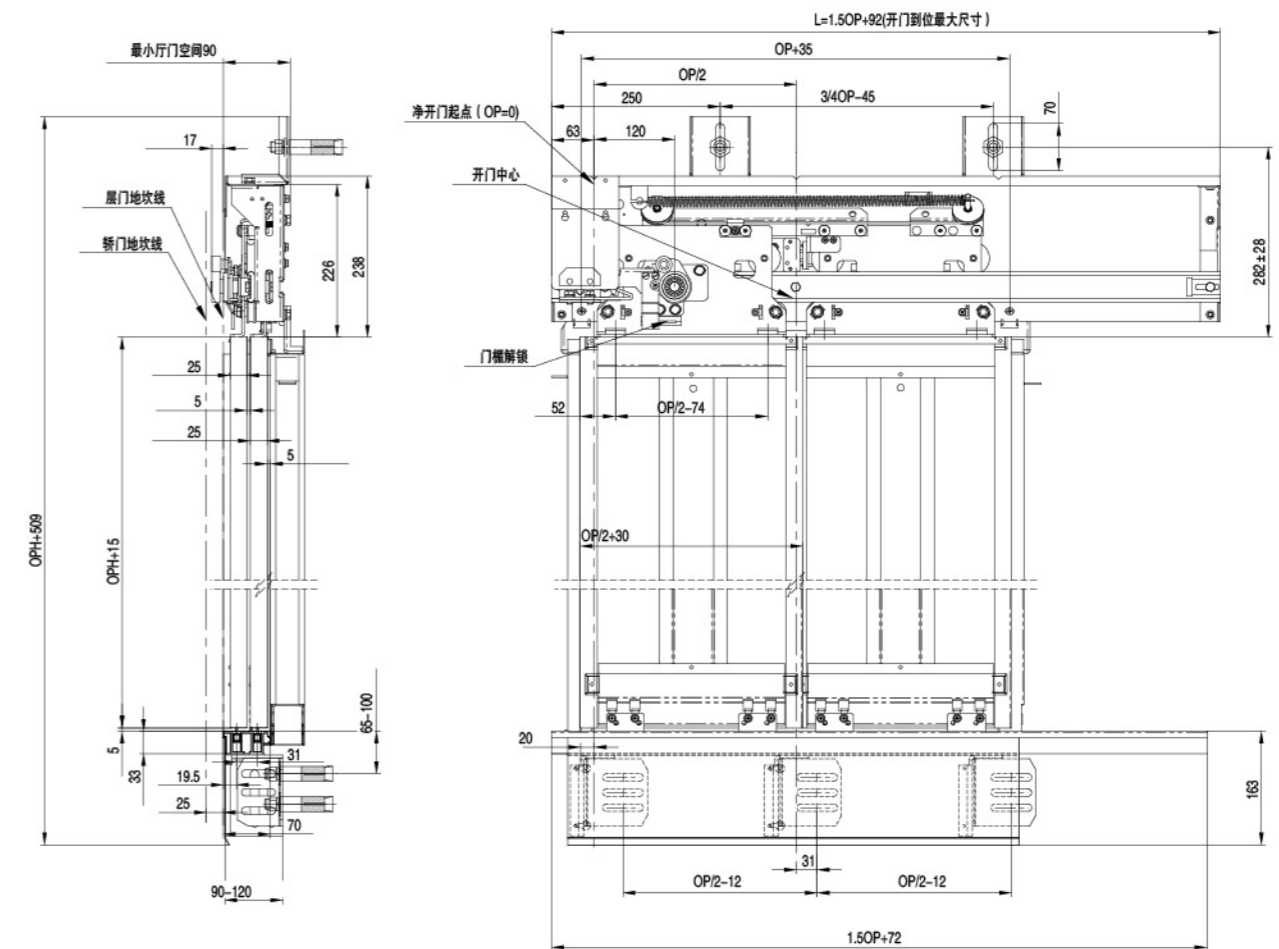


参考尺寸表 / Data Sheet

单位 / Unit: mm

OP (净开门宽度 / Clear Opening Width)	600	650	700	750	800
L	977	1052	1127	1202	1277
门刀结构 / Door Vane Structure	同步门刀 / Synchronous Door Cam				
安装方式 / Installation Mode	轿顶安装 / Car Top Installation Mode		前壁安装 / Lintel Installation		

LD-2S70-H旁开家用梯厅门系统 / LD-2S70-H Side Open Household Landing Door System



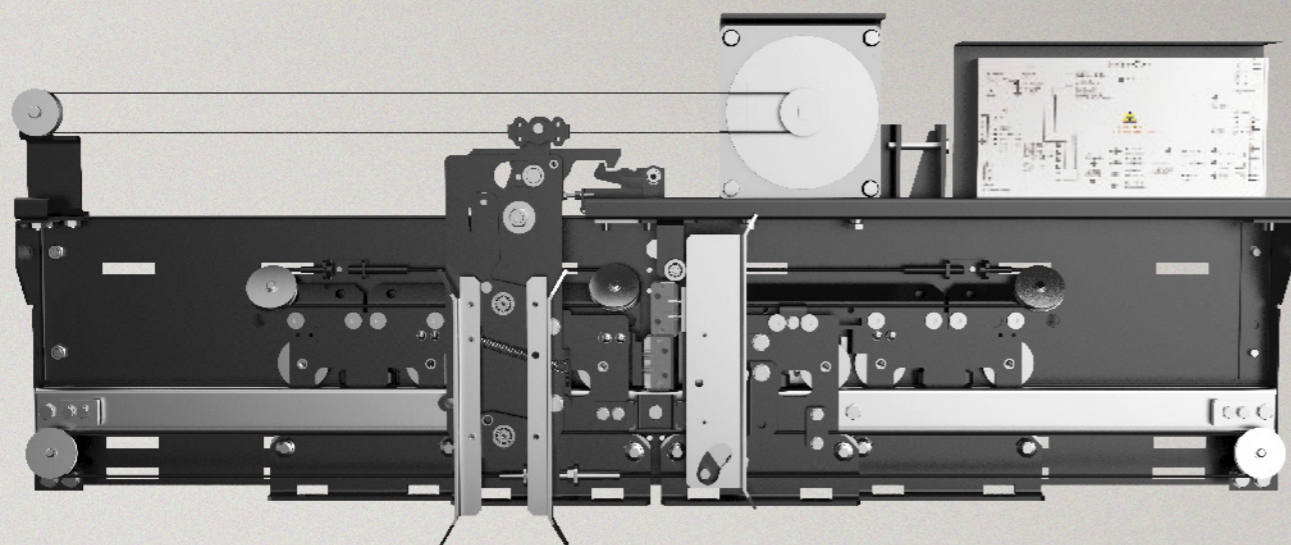
参考尺寸表 / Data Sheet

单位 / Unit: mm

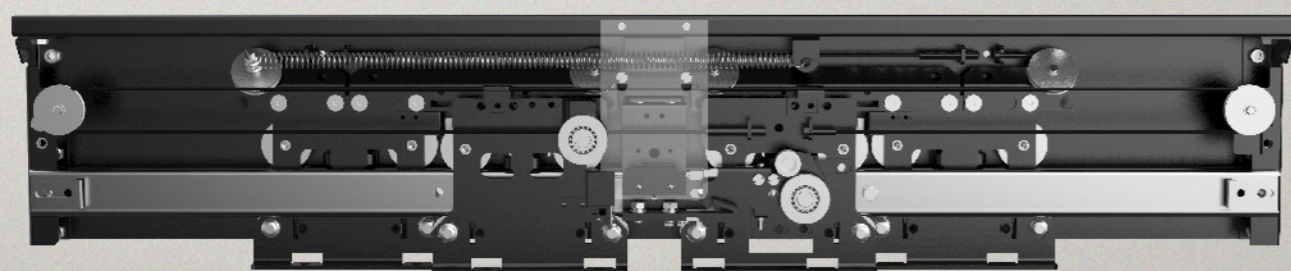
OP (净开门宽度 / Clear Opening Width)	600	650	700	750	800
L	992	1067	1142	1217	1292

备注: 适用门板类型, 钢板门OPH 1900-2200mm, 玻璃门OPH 1900-2100mm

净开门宽: 700~900mm
Net opening width (OP): 700~900mm
净开门高度: 1900~2200mm
Net opening height: 1900~2200mm
开门类型: 中分4扇开门
Opening type: center opening four-panel



JC-4C70D-H



LD-4C70-H

Jarless-Con中分双折家用梯门系统

Jarless-con Center Open Four Panel Household Door System

该门机采用我公司自主研发的永磁同步电机驱动,使用闭环控制,具有节能高效、结构紧凑、井道利用率高、安装方便等优点。

The door is independently developed by our company, subject to permanent-magnetic synchronous motor driving and closed loop control. It has advantages of energy saving, high efficiency, compact structure, high use ratio of hoistway and easy installation.

自主知识产权: 变频器和电机独立知识产权, 自主设计制造。

控制精确: 采用最新无级调速度变频控制的门驱动系统控制, 闭环矢量控制, 实时速度反馈, 调速精确度达到0.1%。

可靠设计: 主要机械部件采用标准化设计, 严格的三维建模、有限元分析等设计验证, 机械结构和控制系统均通过部件的可靠性测试、异常状态测试、功能测试等部件验证; 整机更是通过严酷的异常状态测试、功能测试以及50万次运行的可靠性测试验证, 确保了产品的可靠性。同时产品具有运行平稳、舒适度高、低噪音等特点。

适应性高: 输入宽电压带设计, 输入电压 $220V \pm 20\%$; 抗工地各种复杂环境。

调试简单: 服务器调试或旋钮调试, 5分钟可完成正常调试。

其他功能: 独特的障碍点记忆保护功能; 门刀打开/闭合曲线可调功能; 停电慢关门功能; 编码器故障保护功能; 夹入检出力矩可选功能等。

Intellectual property rights: own the intellectual property rights of frequency converter and motor, which are designed and manufactured by ourselves.

Accurate control: adopts the latest stepless speed regulation frequency control door driving system, loop vector control and real time speed feedback. Speed regulating accuracy can reach to 0.1%.

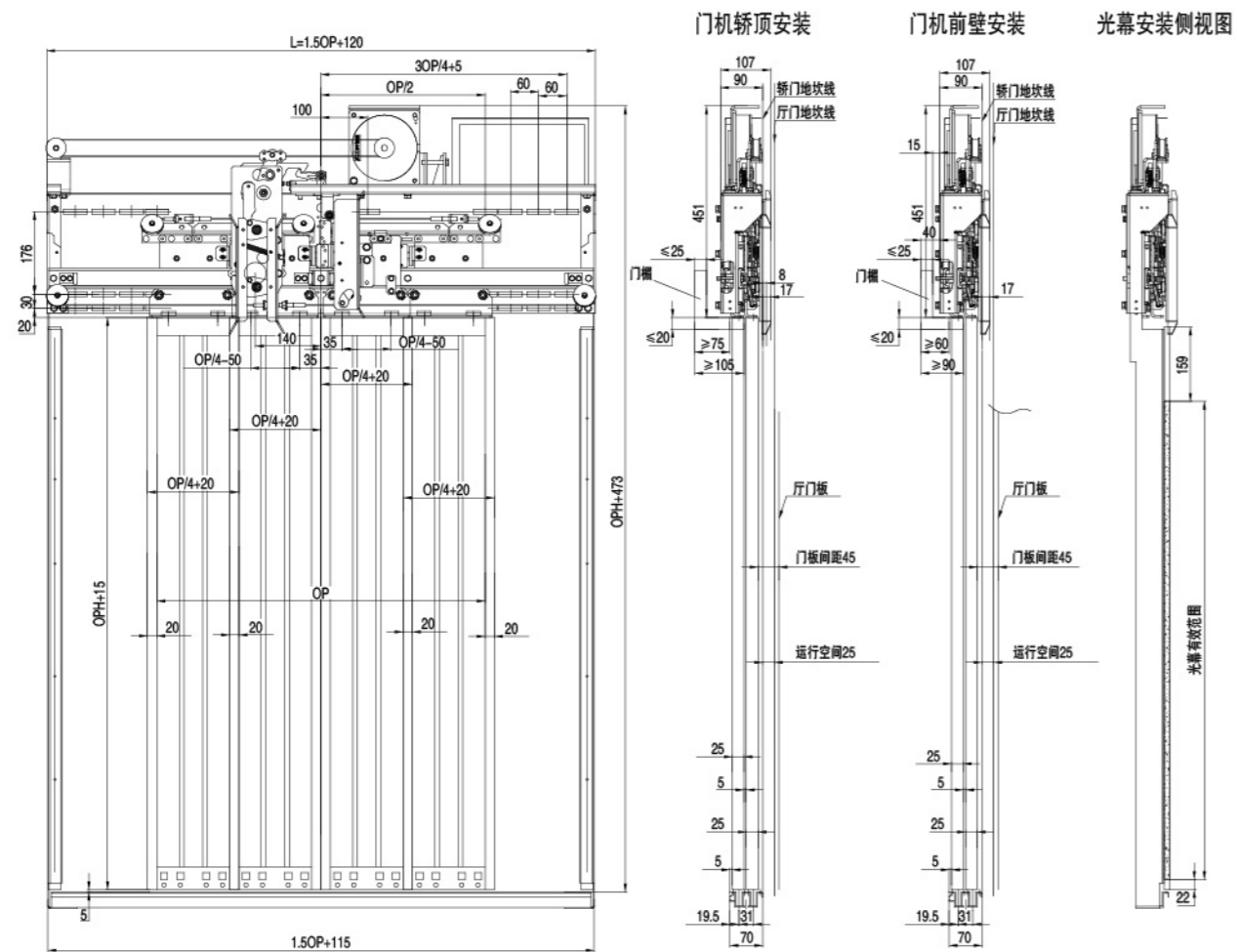
Reliable design: Main mechanical components are subject to standardized design and strict design verification (3D modeling, finite element analysis, etc.). Both mechanical structure and control system are subject to component verification (reliability test, abnormality test, functional test, etc.). Even more, the whole unit is subject to rigorous abnormality test, functional test and 500 thousand operations test. These guarantee product reliability. Besides, the product features stable operation, good comfort and low noise.

Good adaptability: The design of wide voltage input tape supports input voltage of $220V \pm 20\%$, suitable for synchronous door vane, asynchronous door vane and anti-pull asynchronous door vane as well as various complex environments in construction site.

Easy debugging: Normal debugging can be finished within 5 min, through server or knob.

Other functions: fault memory protection, adjustable door vane opening/closing curve, synchronous/asynchronous door vane selection, slow closing under outage, encoder fault protection, adjustable optional torque

JC-4C70D-H中分双折家用梯门系统 / JC-4C70D-H Center Open Four Panel Household Door System

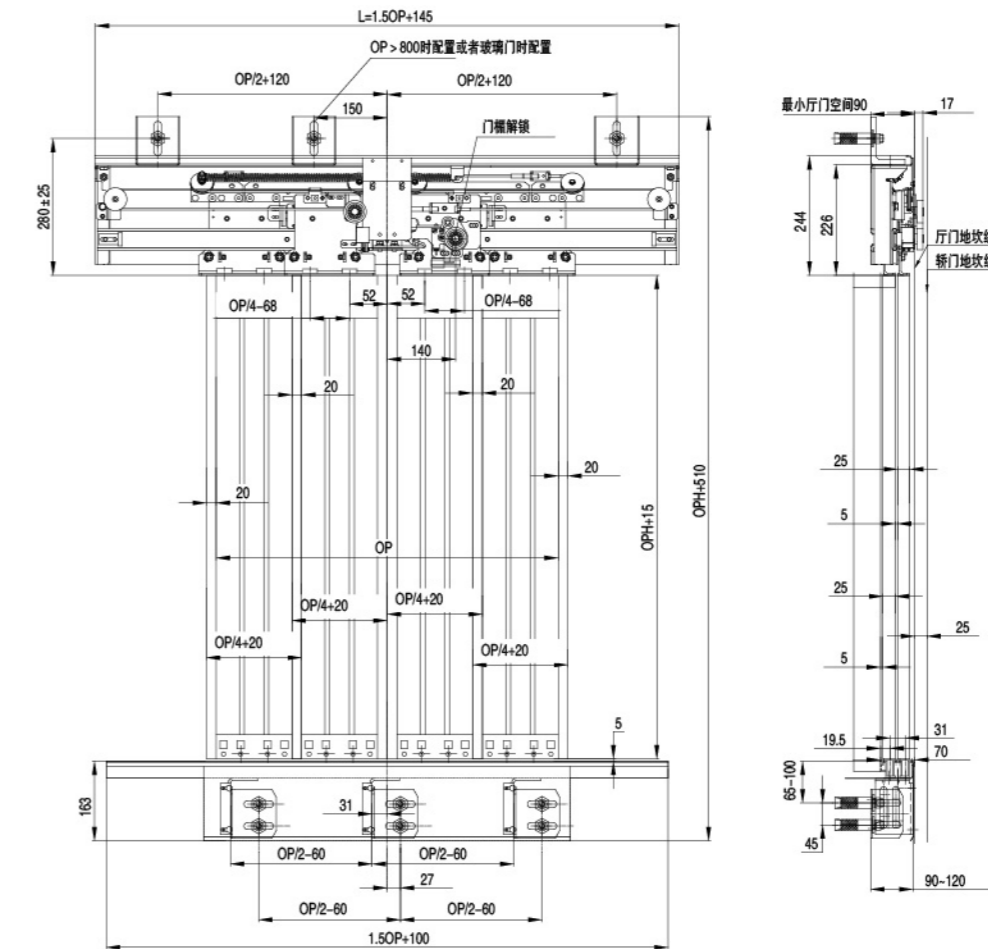


参考尺寸表 / Data Sheet

OP (净开门宽度 / Clear Opening Width)	700	750	800	850	900
L	1170	1245	1320	1395	1470
门刀结构 / Door Vane Structure	同步门刀 / Synchronous Door Cam				
安装方式 / Installation Mode	轿顶安装 / Car Top Installation Mode		前壁安装 / Lintel Installation		

单位 / Unit: mm

LD-4C70-H旁开家用梯厅门系统 / LD-4C70-H Center Open Four Panel Household Landing Door System



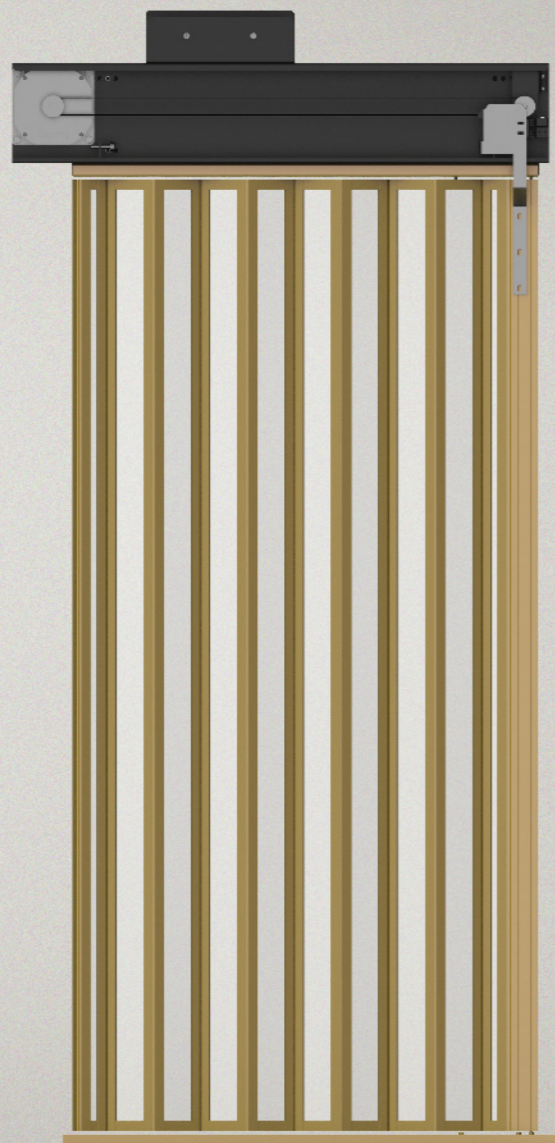
参考尺寸表 / Data Sheet

OP (净开门宽度 / Clear Opening Width)	700	750	800	850	900
L	1195	1270	1345	1420	1492

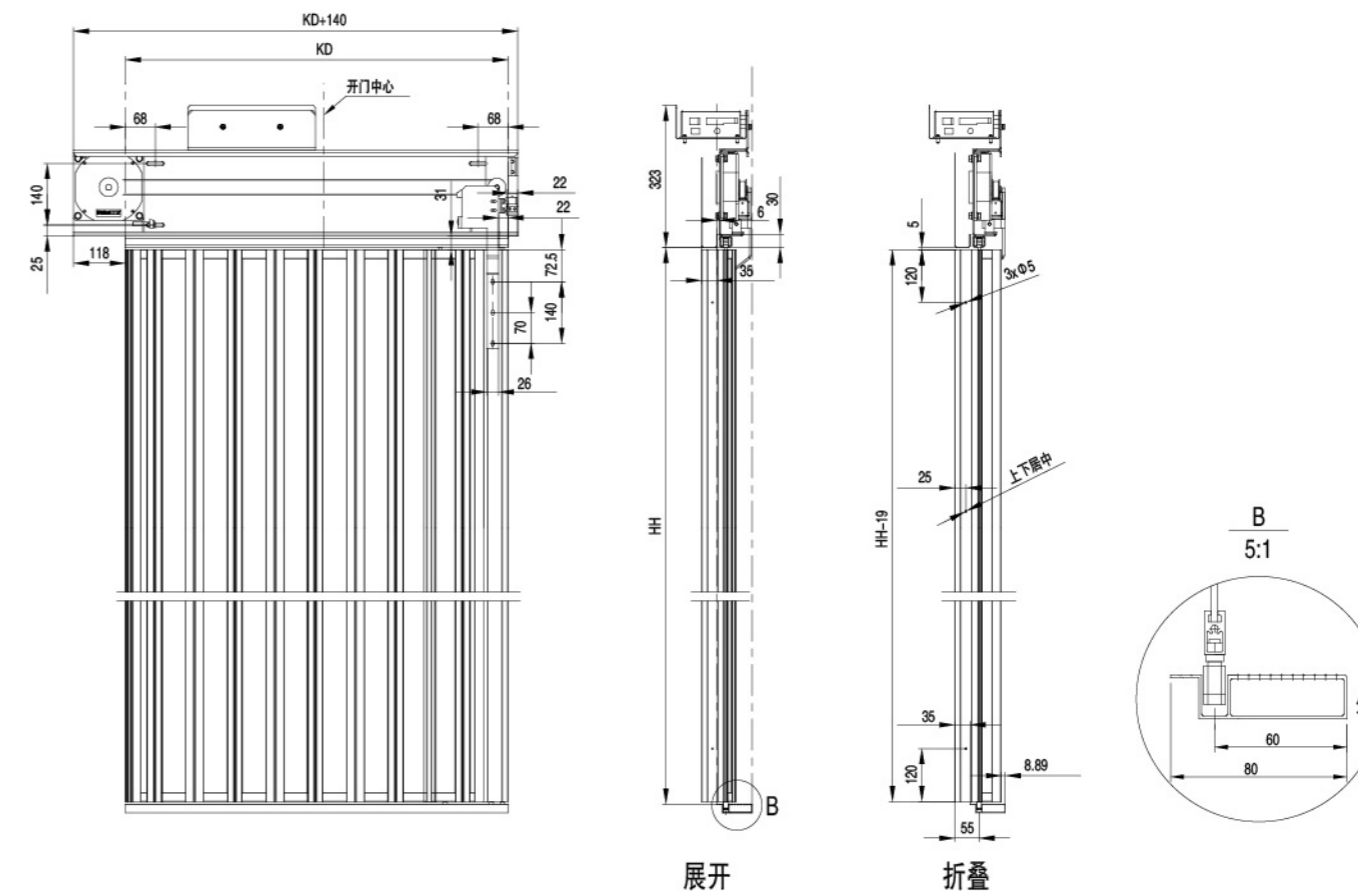
单位 / Unit: mm

备注: 适用门板类型, 钢板门OPH 1900-2200mm, 玻璃门OPH 1900-2100mm

净开门宽: 600~800mm
 Net opening width (OP): 600~800mm
 净开门高度: 2000~2100mm
 Net opening height: 2000~2100mm
 开门类型: 折叠门
 Opening type: folding door



折叠门系统 / Folding Door System



参考尺寸表 / Data Sheet

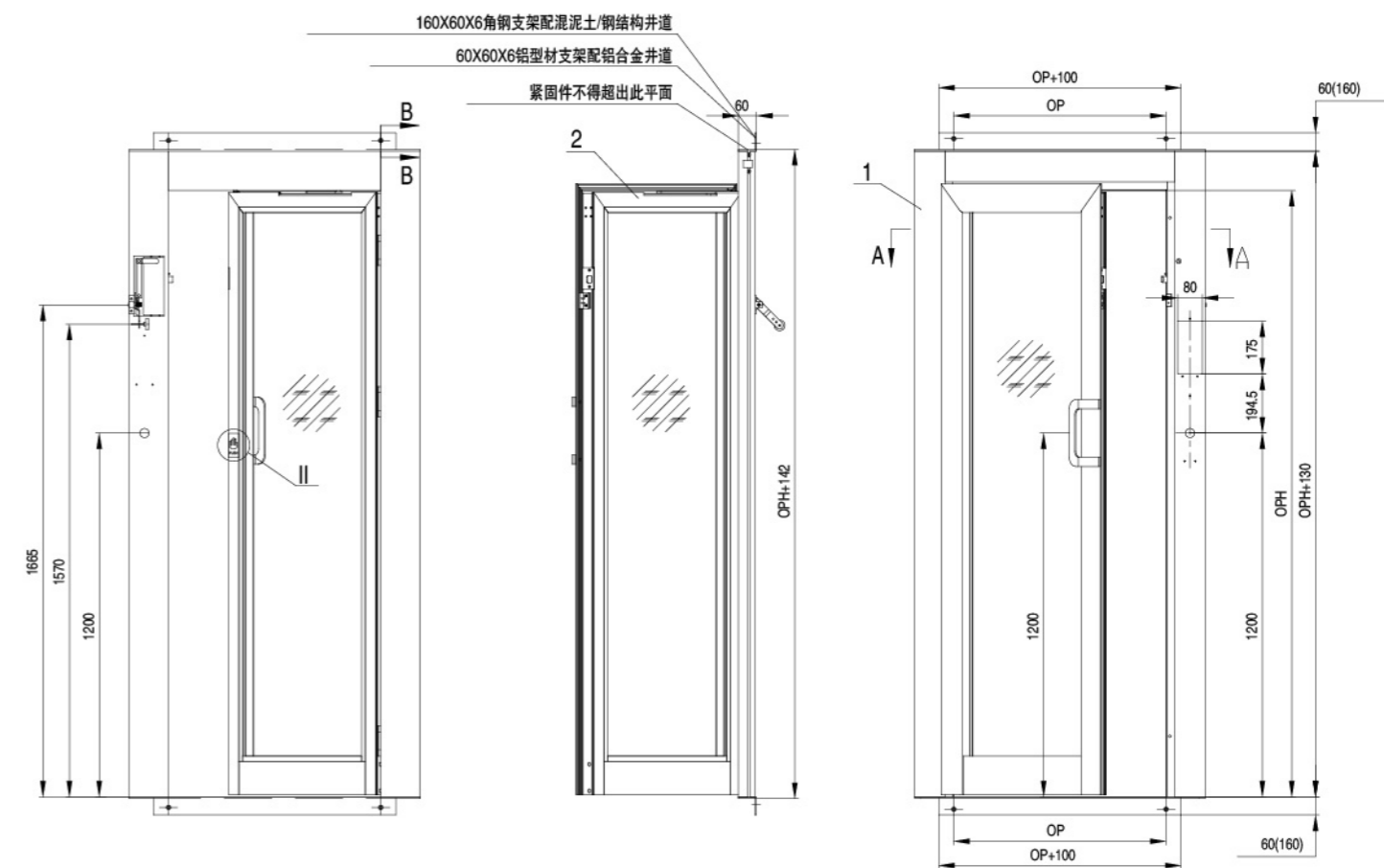
单位 / Unit: mm

轿厢净尺寸宽度KD	800	850	900	950	1000
折叠门收拢后轿厢净宽度JK	600	650	700	750	800
净开门高度HH	2000-2100				

净开门宽: 600~800mm
 Net opening width (OP): 600~800mm
 净开门高度: 2000~2100mm
 Net opening height: 2000~2100mm
 开门类型: 手拉门
 Opening type: sliding door



手拉门厅门系统 / Sliding Landing Door System

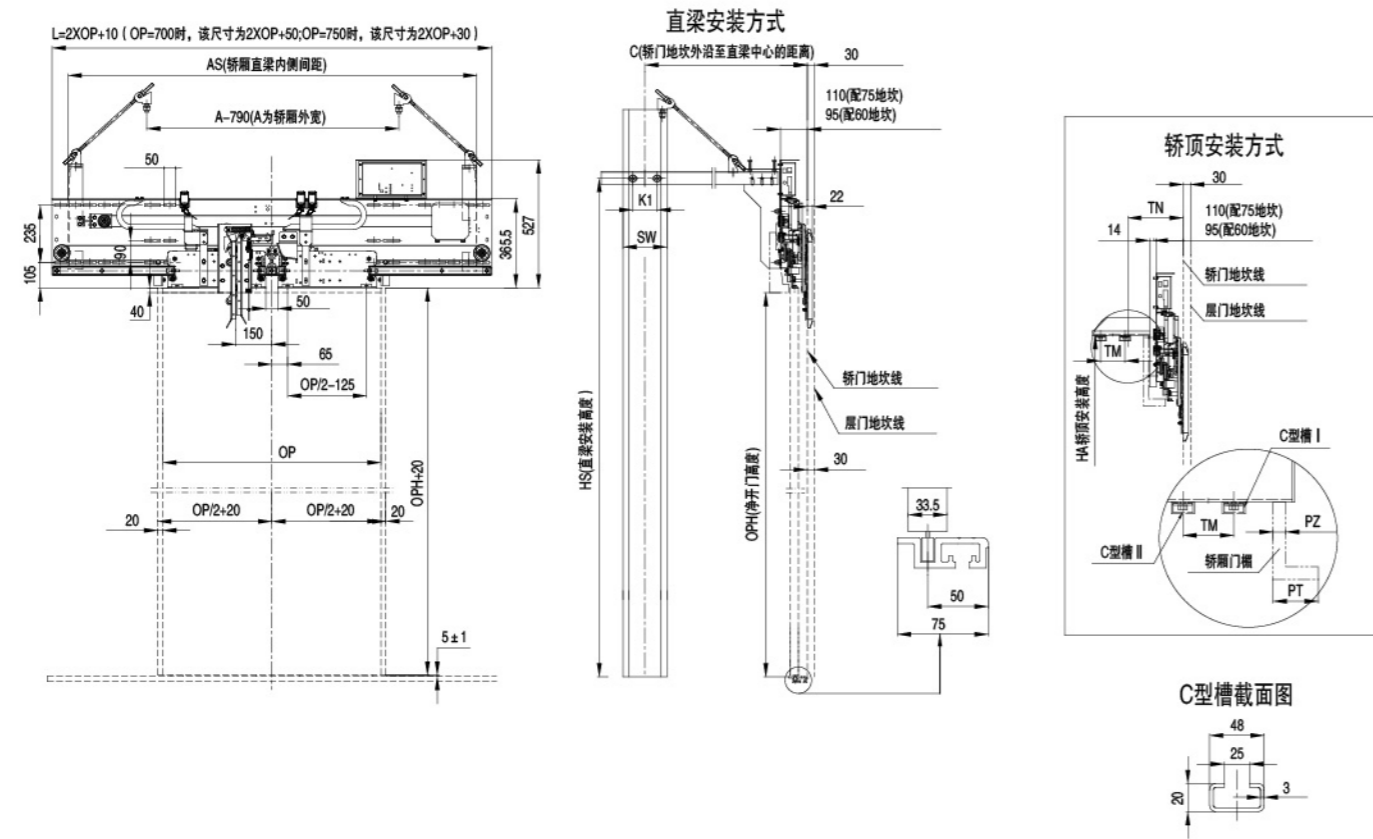


参考尺寸表 / Data Sheet

单位 / Unit: mm

净开门宽度OP	600	650	700	750	800
净开门高度HH	2000-2100				

FC-2C60E中分防水门系统 / FC-2C60E Center Open Waterproof Door System

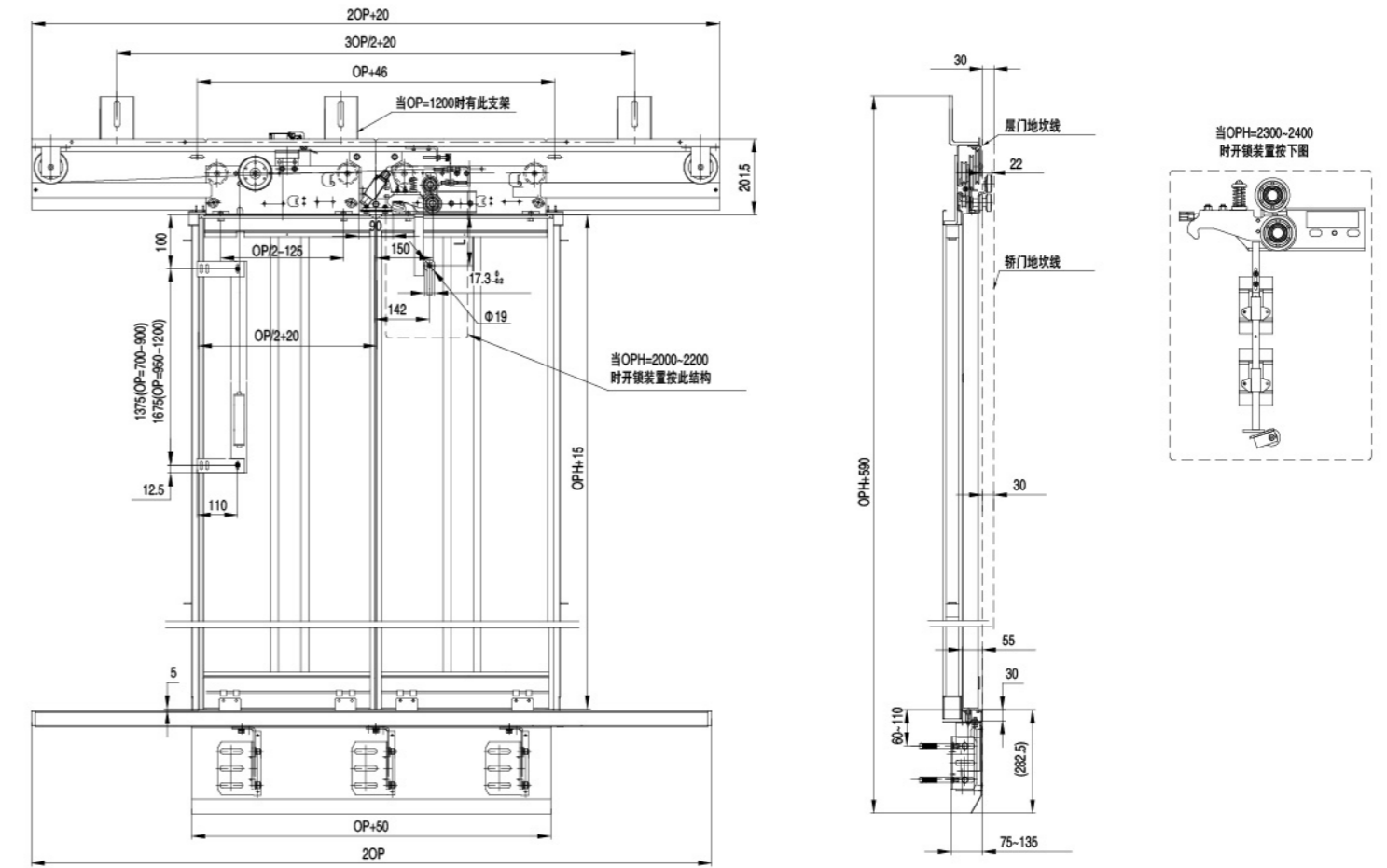


参考尺寸表 / Data Sheet

OP (净开门宽度 / Clear Opening Width)	700	750	700	750	800	850	900	950	1000	1050	1100	1150	1200
L	1450	1530	1410	1510	1610	1710	1810	1910	2010	2110	2210	2310	2410
AS	根据要求确定 / as per Request												
HS	默认值 (Default Value) : $OPH+405$ / $OPH+505$												
A	根据要求确定 / as per Request												
SW	默认值为180, 也可根据要求确定 / Default Value: 180, or as per Request												
HA	根据要求确定 / as per Request												
K1	默认值为100, 也可根据要求确定 / Default Value: 100, or as per Request												
TM	轿顶C型槽之间的间距, 默认值: 100mm												
TN	C型槽II的中心距离轿门地坎外沿的距离												
门刀结构 / Door Vane Structure	同步门刀 / Synchronous Door Cam												
安装方式 / Installation Mode	轿顶安装 Car Top Installation Mode	直梁安装 Straight Beam Installation Mode / 轿顶安装 Car Top Installation Mode / 立柱安装 Colum Installation Mode											
厅、轿门防水等级	IPX3												

单位 / Unit: mm

FLD-O中分防水厅门系统 / FLD-O Center Open Waterproof Landing Door System

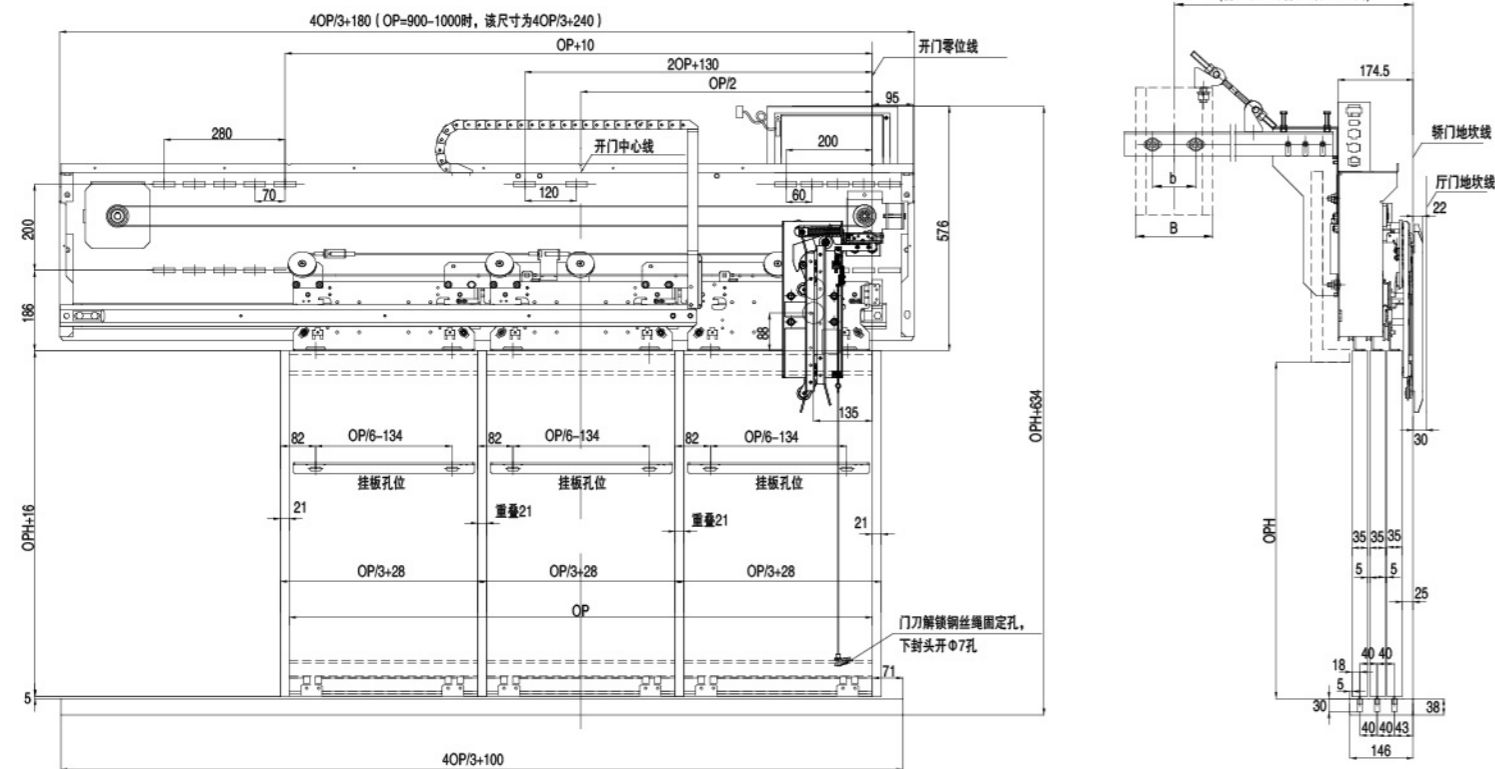


参考尺寸表 / Data Sheet

OP (净开门宽度 / Clear Opening Width)	700-1200				
OPH	2000	2100	2200	2300	2400
L	134	134	334	434	434

单位 / Unit: mm

JC-3S146EA旁开三折门系统 / JC-3S146EA Side Open Three Panel Door System

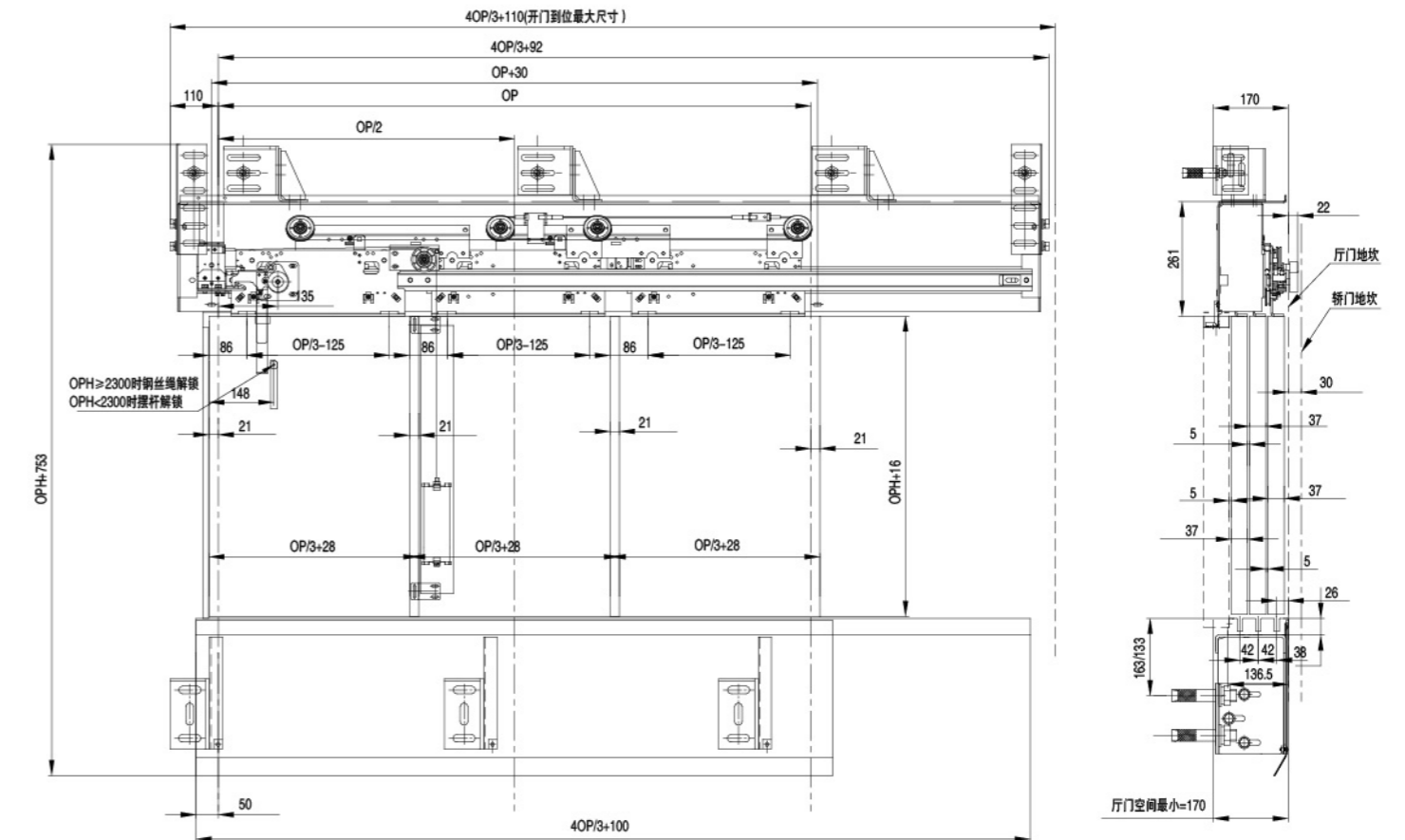


参考尺寸表 / Data Sheet

单位 / Unit: mm

OP (净开门宽度 / Clear Opening Width)	900	950	1000	1050	1100	1150	1200	1250	1300	1350	1400	1450	1500	1550	1600	1650	1700	1750	1800	1850	1900	1950	2000
L	1440	1507	1573	1580	1647	1713	1780	1847	1913	1980	2047	2113	2180	2247	2313	2380	2447	2513	2580	2647	2713	2780	2847
门刀结构 / Door Vane Structure	集成轿门锁同步门刀, 门刀有效长度320mm / Integrated Door Lock Synchronous Door Cam, Effective length of door cam 320mm																						
安装方式 / Installation Mode	直梁安装+轿顶安装 / Straight Beam Installation Mode And Car Top Installation Mode																						

LD-3S136A旁开三折层门系 / LD-3S136A Side Open Three Panel Landing Door System

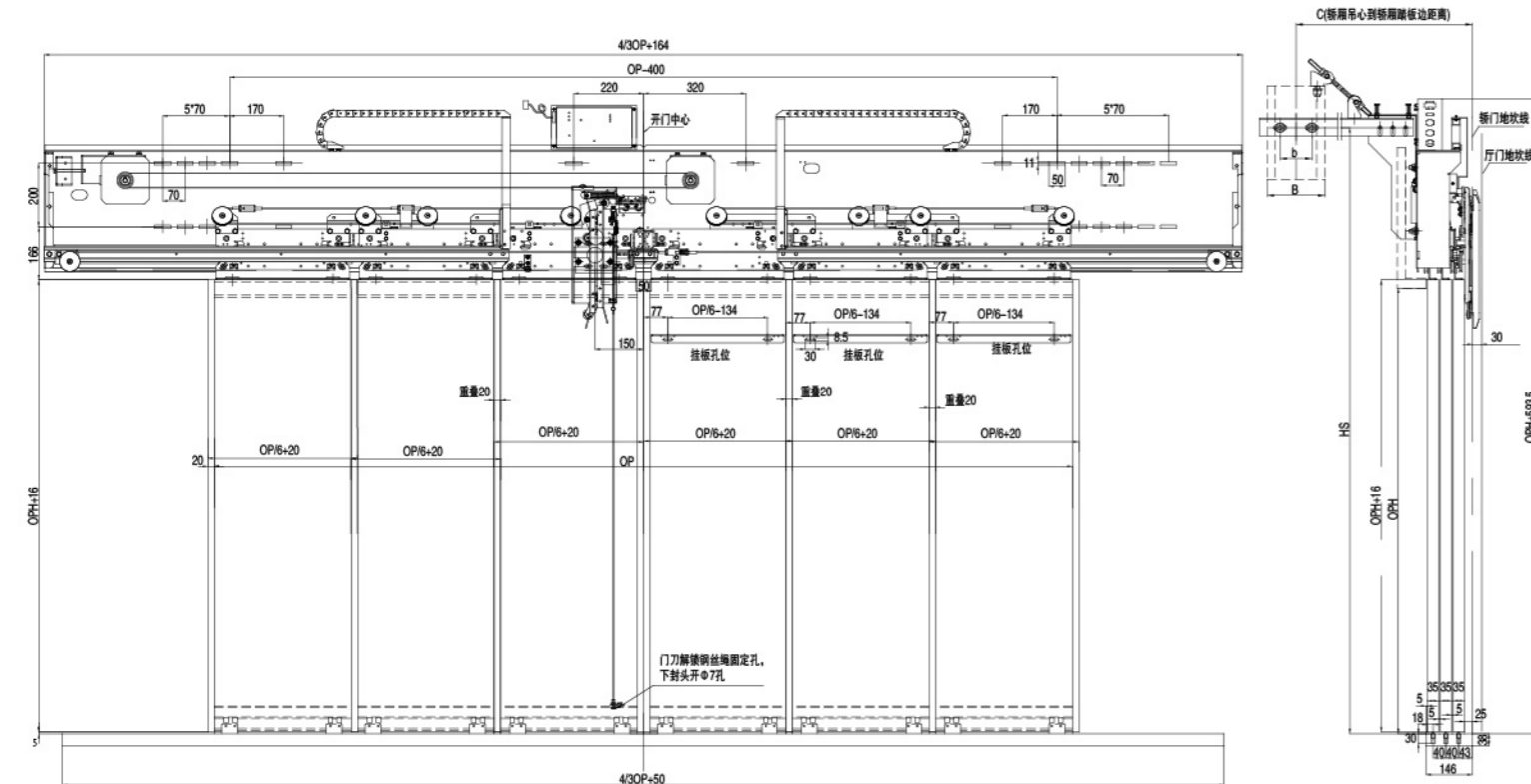


参考尺寸表 / Data Sheet

单位 / Unit: mm

OP (净开门宽度 / Clear Opening Width)	900	950	1000	1050	1100	1150	1200	1250	1300	1350	1400	1450	1500	1550	1600	1650	1700	1750	1800	1850	1900	1950	2000
OPH	2000-3000																						

JC-6C146EA中分三折门系统 / JC-6C146EA Center Open Six Panel Door System

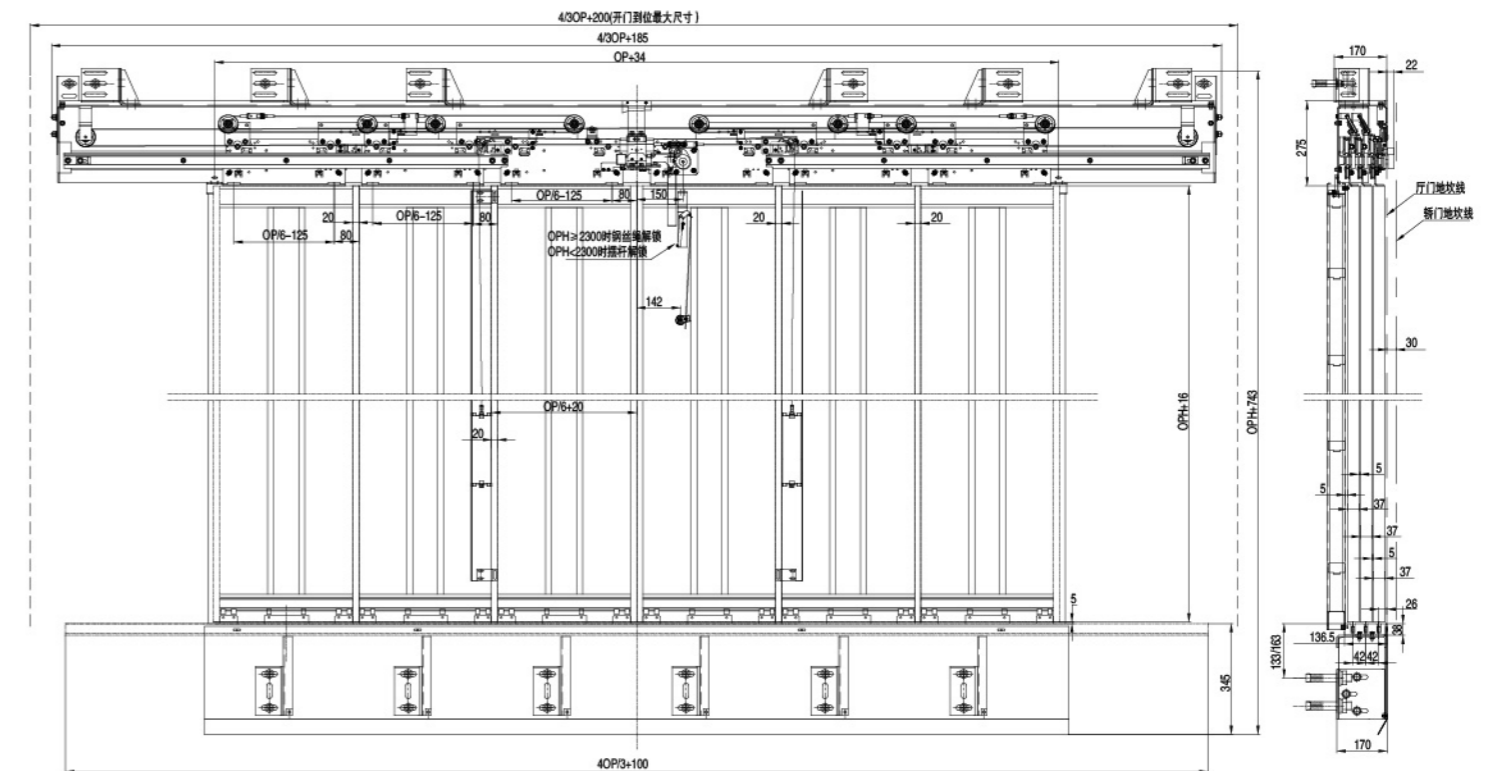


参考尺寸表 / Data Sheet

单位 / Unit: mm

OP (净开门宽度 / Clear Opening Width)	1800	1900	2000	2100	2200	2300	2400	2500	2600	2700	2800	2900	3000	3100	3200	3300	3400	3500	3600	3700	3800	3900	4000
L	2564	2697	2831	2964	3097	3231	3364	3497	3631	3764	3897	4031	4164	4297	4431	4564	4697	4831	4964	5097	5231	5364	5497
门刀结构 / Door Vane Structure	集成轿门锁同步门刀, 门刀有效长度320mm / Integrated Door Lock Synchronous Door Cam, Effective length of door cam 320mm																						
安装方式 / Installation Mode	直梁安装+轿顶安装 / Straight Beam Installation Mode And Car Top Installation Mode																						

LD-6C136A中分三折层门系统 / LD-6C136A Side Open Three Panel Landing Door System



参考尺寸表 / Data Sheet

单位 / Unit: mm

OP (净开门宽度 / Clear Opening Width)	1800	1900	2000	2100	2200	2300	2400	2500	2600	2700	2800	2900	3000	3100	3200	3300	3400	3500	3600	3700	3800	3900	4000
OPH												2000-3000											