

XIO LIFT 西奥电梯
HANGZHOU XIO LIFT CO.,LTD.

☎ SERVICE LINE
服务热线 /400-826-9998

地址: 中国·杭州余杭经济开发区宏达路 168 号
电话: 0571-86099898 传真: 0571-86992133
网址: www.xiolift.com

Add: No.168 Hongda Road, Yuhang Eco-Development Area,
Hangzhou, P.R. China
Tel: 0571-86099898 Fax: 0571-86992133
Web: www.xiolift.com



杭州西奥电梯有限公司版权 (C) 所有

- 本宣传册中的产品技术参数、规格及图形反映了截稿时止 (见封底版本号) 电梯型号的技术特点及配置情况, 我们保留随时改变产品技术参数、选型和颜色的权利。
- 本宣传册只提供一般信息, 并不作为合同文件, 具体配置参数以正式合同约定为准。

HANGZHOU XIO LIFT CO.,LTD. All right reserved

- The technical parameters, specifications and graphics of this product in this brochure reflect the technical characteristics and configuration of the elevator model when the deadline is closed (see the back cover version number). We reserve the right to change the product's technical parameters, selection and color at any time.
- This brochure only provides general information, not as a contract document, the specific configuration parameters to the formal contract shall prevail.

版本号: 2021.04A版
印刷号:



钢带无机房客梯 STEEL BELT MRL
XO-GMEIII ELEVATORS





XO-GMEIII

钢带无机房客梯

STEEL BELT MRL ELEVATORS



杭州西奥电梯积极研究市场需求，为客户提供性能更佳，更适应建筑体系的产品，推出了全新的XO-GMEIII钢带无机房客梯，以其创新的曳引技术、优异的运行效果、对各类型场所高度的适应性等特点，广泛适用于住宅、商场、写字楼等各类型场所。

By research market demand, Hangzhou XIOLIFT decide to provide products to our customers which has better performance, more adapt to building system. XO-GMEIII steel belt MRL elevators has been introduced with innovative traction technology, excellent running performance, has been wide used in residential, shopping malls, office buildings and other kinds of places.



扫一扫，查看电子样本

行业首创的双面曳引技术

Pioneering double-sided traction technology



杭州西奥XO-GMEIII钢带无机房客梯采用双面钢带作为曳引媒介，分别与主机曳引系统和轿厢导向系统构成行业首创的双面曳引技术，既能防止曳引力过剩，延长使用寿命，又能有效防止钢带跑偏，使得运行平稳舒适。

Hangzhou XIOLIFT XO-GMEIII steel belt MRL elevator using double-sided steel as hoisting media, this pioneering double-sided traction technology constitutes with the traction machine and the hoisting system, to avoid excessive traction, extend service life, and effectively stop belt deviation, makes riding more smooth and comfortable.

平面曳引

Plane traction

主机侧采用平面曳引，与主机曳引轮接触的是钢带的平面侧，表面光滑，与齿面曳引相比，平面曳引摩擦力适中，可以避免曳引力过剩，减少钢带在长时间使用过程中无效的磨损，最大限度延长钢带使用寿命。

The steel belt MRL elevator's host uses the plane traction, the plane side of steel belt in contact with the traction sheave. Plane traction friction can offer some improvements over the tooth surface traction, such as better traction, reduce loss of traction when using of steel belt, maximize the service life of steel belt.

齿面导向

Tooth surface traction

轿厢侧采用齿面导向，与轿厢轿顶轮接触的是钢带的齿面侧，表面的界面为齿型，该设计方式能够防止钢带跑偏，使轿厢运行平稳舒适，同时减小运行噪音。

Tooth surface traction has been used to lift the car, the tooth surface of the belt is coordinated with overhead sheave, in order to avoid the steel belt deviation, makes riding more smooth and comfortable, and minimize the running noise at same time.



全新复合钢带

New composite steel belt



免维护

聚氨酯高分子材料，无需润滑

Maintenance free polyurethane polymer materials without lubrication

高寿命

寿命是传统钢丝绳的2-3倍

Long-lasting lifetime lifetime is 2-3 times than the traditional wire rope

高效能

更易弯曲，接触面积大，更高效节能

Highly efficient more flexible, the contact area is large, more energy efficient

XO-GMEIII钢带无机房客梯采用的双面钢带由德国原装进口，结构上创新的采用双面曳引设计，增大接触面积，驱动力强，防止打滑，同时与普通钢带一样，由聚氨酯高分子形成表面，无需润滑，免维护，节约日常维护成本，并且寿命是常规钢丝绳的2-3倍。

The double-side steel belt which used in XO-GMEIII steel belt MRL elevators is imported from Germany, the double-side design increase the contact area, the better driving force also used to prevent sliding. Same as the ordinary steel belt, belt surface is formed by polyurethane polymer, with no lubrication required, save the maintenance costs, and lifetime is 2-3 times than the traditional wire rope.

六大钢带保护功能

钢带寿命保护(标配) Steel belt life protection(standard)	记录并存储钢带的寿命，当钢带的使用寿命达到设定值，电梯进入保护状态 Record and store the service life of the steel belt. When it reaches the set value, the elevator will enter the protection state
钢带折弯次数保护(标配) Steel belt bending times protection(standard)	计算任意一段钢带的折弯次数，当任意一段钢带的最大折弯次数达到设定值，电梯进入保护状态 Calculate the bending times of any section of steel strip. When the maximum bending times reaches the set value, the elevator will enter the protection state
钢带滞留检测功能(标配) Steel belt retention detection function(standard)	通过检测装置监测轿厢是否发生滞留，当出现滞留时，电梯进入保护状态 The detection device monitors whether the car is detained. If so, the elevator will enter the protection state
钢带断带检测功能(选配) Steel belt breaking detection function(optional)	通过检测装置监测钢带是否断裂，当钢带出现断裂时，电梯进入保护状态 The detection device monitors whether the steel belt is broken. If so, the elevator will enter the protection state
钢带磨损检测功能(选配) Steel belt abrasion detection function(optional)	通过检测装置监测钢带是否磨损，当钢带磨损达到一定程度时，电梯进入保护状态 The detection device monitors whether the steel belt is abrasion. If so, the elevator will enter the protection state
钢带张力保护(选配) Steel belt tension protection(optional)	通过检测装置监测钢带的涨紧力，当涨紧力超过一定值后，电梯进入保护状态，直至涨紧力恢复 The tension force of the steel strip is monitored by the detection device. When it exceeds a certain value, the elevator will enter the protection state until the tension force is restored

永磁同步无齿轮钢带主机

Permanent magnet synchronous gearless steel belt host

与复合钢带配合的是永磁同步无齿轮钢带主机，此款主机是为XO-GMEIII钢带无机房客梯系列单独研发的专用主机，我们对主机结构、制动器等多项技术和结构进行了全新设计，使该主机具有安全、高效、小巧等特点。

Cooperate with composite steel belt is the Permanent magnet synchronous gearless steel belt host, this host is dedicated designed for XO-GMEIII steel belt MRL elevators, we have made a number of technical and structure improvements, such as a host structure, brakes, etc. to make the host more safe, more efficiency, and smaller.



安全

卧式结构，双轴承支撑，受力更均匀合理，稳定性更高

Safe

Horizontal structure and double bearing support make the host more stable and uniform.

小巧

结构紧凑，体积缩小30%，重量减轻25%，便于安装维护

Small

Compact structure, 30% smaller and 25% lighter, easy to install and maintain.

舒适

制动器双摩擦面受力结构，制动扭振小，舒适感好，噪音降低15%以上

Comfortable

The brake has double friction surface and low torsional vibration, noise reduction by 15%.

注：因载重、速度等规格不同，实物和效果图可能存在差异，以实物为准。

轿厢装潢 Car Decoration



S 标准轿厢装潢配置 Standard car decoration configuration



XO-Z3311(L)

标准吊顶 Standard ceiling

宽波纹 (膜法金属板) + LED灯具
Hairline stainless steel+ LED lamps and lanterns

标配轿厢 Standard Car

- 吊 顶: XO-Z3311(L)宽波纹 (膜法金属板) + LED灯具
- 轿 壁: 发纹不锈钢
- 轿 门: 发纹不锈钢
- 地 面: XO-Z0471 (PVC)
- Ceiling: XO-Z3311(L)(hairline stainless steel+LED lamps and lanterns)
- Wall: Hairline stainless steel
- Car door: Hairline stainless steel
- Floor: XO-Z0471 (PVC)



O 可选轿厢装潢
Optional car decoration



XO-Z1231

轿壁XO-Z1231J: 后、侧壁: 木饰面贴膜(PW121)+香槟金抗指纹短发纹不锈钢嵌条, 下部木饰面贴膜(PW102)+LED灯
前壁: 香槟金抗指纹短发纹不锈钢
吊顶XO-Z1231D(L): 白镜面不锈钢+乳白色透光板
地坪XO-Z1231P: 大理石(云朵拉灰)

Wall XO-Z1231J: Rear & side wall: Wood veneer (PW121)+Champagne gold anti fingerprint short hairline stainless steel inlay+wood veneer (PW102)+LED
Front wall: champagne gold anti fingerprint short hairline stainless steel
Ceiling XO-Z1231D(L): White mirror stainless steel+Milky white transparent plate
Floor XO-Z1231P: Marble (Yundora grey)



XO-Z1232

轿壁XO-Z1232J: 后壁: 中间新西米黄大理石+古铜镜面不锈钢嵌条+LED灯, 木饰面贴膜(NW084)
侧壁: 白镜面蚀刻不锈钢(XO-Z0981)+古铜镜面不锈钢嵌条+木饰面贴膜(NW084)
前壁: 古铜镜面不锈钢
吊顶XO-Z1232D(L): 白镜面不锈钢+乳白色亚克力
扶手XO-Z1232F: 两侧, 古铜镜面不锈钢圆管扶手
地坪XO-Z1231P: 大理石(云朵拉灰)

Wall XO-Z1232J: Rear wall: New West beige marble, Bronze mirror stainless steel inlay+Wood veneer (NW084)+LED
Side wall: White mirror etched stainless steel(XO-Z0981)+Bronze mirror stainless steel inlay+Wood veneer (NW084)
Front wall: Bronze mirror stainless steel
Ceiling XO-Z1232D(L): White mirror stainless steel+Milky acrylic
Handrail XO-Z1232F: On both sides, bronze mirror stainless steel tube handrail
Floor XO-Z1231P: Marble (Yundora grey)



O 可选轿厢装潢
Optional car decoration



XO-Z1233

轿壁XO-Z1233J: 后壁: 木饰面贴膜(PW110)+香槟金抗指纹和纹不锈钢嵌条, LED灯带
侧壁: 白镜面蚀刻不锈钢(XO-Z0979)+香槟金抗指纹和纹不锈钢嵌条+木饰面贴膜(PW110), LED灯带
前壁: 香槟金抗指纹和纹不锈钢
吊顶XO-Z1232D(L): 白镜面不锈钢+乳白色亚克力
扶手XO-Z1233F: 两侧, 香槟金镜面不锈钢圆管扶手
地坪XO-Z1233P: 大理石(新西米黄)

Wall xo-Z1233J: Rear wall: Wood veneer (PW110)+Champagne gold anti fingerprint stainless steel inlay, LED light band
Side wall: White mirror etched stainless steel (XO-Z0979)+Champagne gold anti fingerprint stainless steel inlay+Wood veneer (PW110), LED light band
Front wall: Champagne gold anti fingerprint stainless steel.
Ceiling xo-Z1232D(L): White mirror stainless steel+Milky acrylic
Handrail xo-Z1233F: On both sides, champagne gold mirror stainless steel tube handrail
Floor xo-Z1233P: Marble (Yundora grey)



XO-Z1234

轿壁XO-Z1234J: 后壁: 抗指纹雾面不锈钢, LED灯
侧壁: 中间白镜面不锈钢+抗指纹雾面不锈钢嵌条, 两侧抗指纹雾面不锈钢, LED灯
前壁: 抗指纹雾面不锈钢
吊顶XO-Z1234D(L): 钢板喷粉(RAL9022)+乳白色透光板+LED筒灯
地坪XO-Z1233P: 大理石(新西米黄)

备注: 效果图仅适用于轿厢净深≤1750mm

Wall o-Z1234J: Rear wall: Anti fingerprint fog surface stainless steel, LED
Side wall: White mirror stainless steel+Anti fingerprint fog surface stainless steel inlay, Anti fingerprint fog surface stainless steel on both sides, LED
Front wall: Anti fingerprint fog surface stainless steel
Ceiling xo-Z1234D(L): Powder sprayed steel plate(RAL9022)+Milky white transparent plate+LED downlight
Floor xo-Z1233P: Marble (Yundora grey)

标准人机界面

Standard human-computer interface recommendation



XHB15-A
无底盒外召唤
Bottomless calling box

召唤盒 Call

▶ 标配显示
Standard Display



4.3"BND-LEDW
黑屏液晶显示
Black screen LEDW

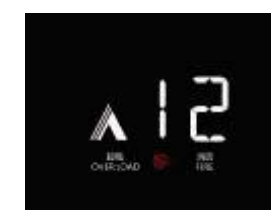
▶ 标配按钮
Standard button



BR36D
发纹不锈钢盲文按钮
Hairline stainless steel braille button

操纵箱 Operation box

▶ 标配显示
Standard Display



视窗放大型
windows enlarged
6.4"BND-LEDW
白色段码显示
6.4"BND-LEDW
White LED segment display

▶ 标配按钮
Standard button

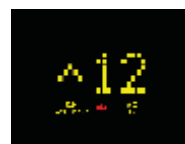


BR36D
微亮型发纹不锈钢盲文按钮
Shimmery hairline stainless steel braille button

COP2
6.4"BND-LEDW+BR36D
Integrated operation panel

Optional human-computer interface recommendation 选配人机界面推荐

可选显示 Optional Display



放大型视窗
Windows enlarged
6.4" EOD-LEDY
LED黄色点阵显示
Yellow LED dot matrix display



C201
*7.0" TFT-LCD
炫彩液晶显示
Colorful liquid crystal display



C202
*7.0" TFT-LCD
炫彩液晶显示
Colorful liquid crystal display

可选按钮 Optional button



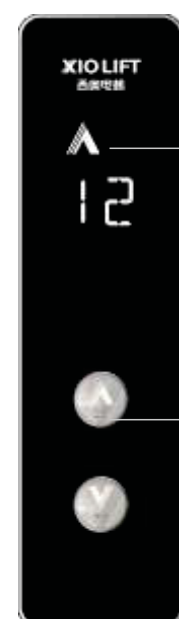
BS34D
微亮型发纹不锈钢盲文按钮
Shimmery hairline stainless steel braille button



BR34B
微亮型白镜面不锈钢盲文按钮
Shimmery white mirror stainless steel braille button

可选召唤盒 Optional Call

XHB17-A无底盒外召唤
Bottomless calling box



4.3" BND-LEDW
黑底白字显示
Black screen



BR34B
白镜面不锈钢盲文按钮
White mirror stainless steel braille button

XHB15-A 无底盒外召唤
Bottomless calling box

可选显示
Optional Display

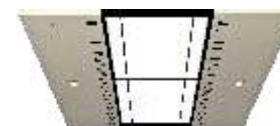


4.3" EOD-LEDY
LED黄色点阵显示
Yellow LED dot matrix display

* 喷涂钢板轿厢标配COP1分体式操纵箱, 其余材质轿厢不可选该操纵箱
Spray the car comes standard with COP1 split steel control box, the rest of the material can not be selected in the control box car

Optional car recommendation 选配轿厢推荐

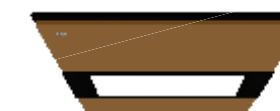
可选吊顶 Optional ceiling



XO-Z3301(L)
两侧边框喷粉钢板 (RAL1013) +LED筒灯,
中间框架喷粉钢板 (RAL9004) +LED照明
+丝印亚克力透光板
Powder injection steel plates in both sides (RAL1013)+LED down lamp; Powder injection steel plates in central frame(RAL9004)+LED lighting+silk-screen acrylic light-passing board



XO-Z0213D(L)
304发纹不锈钢框架, 中间白色亚克力
304 hairline stainless steel frame, White acrylic in the middle



XO-Z3312(L)
前后喷粉钢板 (RAL 1011), 中间喷粉钢板 (RAL 9004) +LED灯具
Before and after the powder steel plate (RAL 1011), the middle powder steel plate (RAL 9004) + LED lamps



XO-Z0211D(L)
304发纹不锈钢框架, 中间白色亚克力
304 hairline stainless steel frame, White acrylic in the middle

*具体可选整体装潢详见装潢样本
The overall decoration decoration for optional sample

可选地坪 Optional Floor

大理石 (Marble serie)



XO-Z0182P



XO-Z0183P



XO-Z0194P



XO-Z0206P

PVC (PVC optional)



XO-Z0470



XO-Z0474



XO-Z0475



XO-Z0237P

可选扶手 Optional barre



XO-Z0506A
圆型白镜面不锈钢扶手
Round white mirror stainless steel handrail



XO-Z0509
扁型不锈钢扶手
Flat stainless steel



Basic function 基本功能

↑ - 运行功能 Run function

全集选控制 Full collective operation	在信号控制的基础上把呼梯信号集合起来进行有选择的应答 In the automatic operation state, the elevator will automatic response the signal from instructions, operation direction etc
满载直驶 Load non stop	轿厢满载时, 不响应外呼信号, 执行轿内信号 When the cabin is fully loaded, the elevator does n't response the hall calling signal, executes the car-internal signal
自动返回基站 Auto-return to main floor	当轿厢在设定时间内无外呼和内选时, 电梯将自动返回设定楼层(基站) If no registration of calls or operations after preset timeout, the car will return to preset main stop and wait there
错误指令取消 Cancel error calls	当电梯未运行时, 可以通过连续双击该楼层的内招按钮, 取消该已登记的信号 Before the car starts, the registration of a call or operation can be canceled by double click of this button
楼层间距自学习 Hoistway floor space self learning	系统自动记录各层高度, 在电梯运行时进行精确的距离控制 The system automatically record each floor height when the elevator normal operation, it can win precisedistance control, so as to realize the dock directly
锁梯开关 Key switch	锁梯开关动作后, 系统不再响应外召指令, 待电梯响应完轿内所有指令后, 自动返回基站 Lock key moves, the system cancel all call signals, after the elevator response the car call instruction signals, automatically returns to base floor
开关门按钮 Door opening button Door closing button	轿内设置开、关门按钮, 电梯未运行时, 可以按开门按钮, 使电梯开门; 按关门按钮, 可以取消开门等待时间, 立刻关门, 提高运行效率 Door open and close button are set up Inside of the cabin, when the elevator is not running, you can press the open button to open the door, press the close button to cancel the open waiting time, close the door at once. improve the running efficiency
厅外、轿内开门时间分别控制 Door opening closing adjusting	系统可以根据需要, 设置厅外、轿内召唤时, 不同的开门等待时间 Rise the system performance by adjusting the door hold time for both car door and landing door separately
自动校正运行 Auto-correct operation	当电梯失去位置时, 电梯自动进行校正运行, 找到电梯的正确位置 When elevator lose position, elevator auto-correct operation to the right position
就近平层功能 Nearby layer function	当电梯丢失平层位置时, 无需到底层位置, 到就近楼层停靠, 纠正位置, 节约乘客等待时间 When the elevator miss the leveling location, needless to move to bottom layer for replacement, only stop at the nearby floor, save the passenger's time
关门等待取消 Door closing cancel	可以通过按下轿内的关门按钮, 使电梯立刻关门 Through clicking the close button to close the elevator immediately
本层厅外重开门 Re-opening for landing door	当电梯在本层时, 可以通过按下电梯运行方向同向的外召按钮, 使电梯重新开门 In normal closed process, when pressing the hall button, if the running direction of hall call button is the same with the elevator running direction, the elevator will be open again
无称重力矩补偿 Torque compensation without weighing	电梯启动时, 不需要增加称重开关, 系统自动根据轿厢当前的重量, 进行力矩补偿, 达到良好的启动舒适感 When elevator starts, system would compensate torque due to car current weighing without adding weigh button, to create good starting comfort
末站换向预指示 Terminal Station inverting preindication	电梯运行至目的层之前, 计算得知响应完该目的层后, 已无相同方向的指令和方向时, 显示方向提前换向 Before the elevator operates to the target layer, the calculation of the response after the objective layer, instruction and direction have no the same direction, the display direction advance commutation
司机服务 Attendant service	轿箱内配置有司机开关时, 动作此开关电梯进入司机服务, 由司机决定电梯的开门、关门 The Attendant Operation feature allows semi-automatic operation with manual control
独立服务 Independent service	轿厢内配置独立服务开关, 此开关动作时, 电梯脱离群控, 不响应外召指令 This function is designed for meeting customers' special needs. When switched on independent service the elevator will only answer any registered car call deviating from group control, regardless of the hall calls while opening or closing the door by manual control and operating according to customers' registered signals

+ - 安全功能 Security features

端站保护 End protection	当电梯行驶至终端楼层时, 未降至系统设定的速度时, 保护装置将强制减速, 保证安全 If the speed is not slowed to the preset value while the car reach the end floor, a forced deceleration will be carried out by system in order to protect the safety of the car
故障自诊断 Error self-diagnosis function	系统可以自动诊断并记录电梯的故障信号, 使用专用工具可以迅速排除故障 The system can automatically diagnose and record the elevator errors signal, use the special tool quickly eliminating errors
驱动设备过热保护 Drive overheat protection	如电机温度超过限定值, 电梯将完成当次运行后, 进入待机状态, 温度恢复后自动恢复正常工作 Self-protection mode will be achieved if the temp of the motor exceeds the preset value due to the heat made by motor itself or the high temp in the environment. The car stops at the nearest floor, unload and shut down the light and ventilation; once the temp falls down to the preset value, the car will recover
钢带滑动自检功能 Steel beltsliding self-test function	实时监测曳引钢带滑动相对位移量 Real-time monitoring of relative displacement of traction steel belt
关门力矩保护 Close torque protection	如轿厢门关闭时发生机械卡阻, 当力矩超过预定值时, 电梯门将重新打开 If the resistance torque reached the preset value, the door will reopen
速度异常检测功能 Speed anomaly detection	系统通过对编码器反馈信号与系统给定速度进行比较, 对电梯运行速度进行控制, 一旦两者偏差超出系统允许的范围, 系统进入保护, 电梯停止运行 By monitoring and comparing the encoder feedback speed signal and system preset speed value. The system can master the elevator running speed. Once both difference value is beyond the scope of the system allows, the system into the protection of state, the car stop running
接触器异常检测功能 Contactor anomaly detection	系统根据接触器控制命令状态检测主接触器、抱闸接触器的反馈, 如发现异常, 系统进入保护, 电梯停止运行 According to the contact device control command system detecting state main contactor feed-back, if discovery is unusual, the system will enter a state of protection, the elevator stops running
电网异常检测功能 Power grid anomaly detection	电网波动幅度超过一定的安全范围, 错相、缺相时, 系统进入保护状态, 电梯停止运行 Power grid volatility by over a certain safety margin, the system into the protection of state, the elevator will stop running
光幕门保护 Light curtain proection	在电梯入口形成光幕防护网, 每一扫描循环内有154束红外线, 反应时间少于0.1秒 Light curtain protection fence is set up in the entrance of elevator, every scan loop has 154 bunches infrared rays, reaction time of 1 second
超载报警 Overload protection	当电梯内的乘客超过电梯额定负载后, 蜂鸣器响, 发出超载报警信号, 提醒乘客离开, 取消已登记轿内指令 When the load of the car exceeds rated capacity, Overload operations is triggered, this operation opens the door, sounds the buzzer, and illuminations the overload lamp. The overload conditions is removed when the weight of the car falls below the rated load
轿厢开、关门延时保护 Delayed car protection	当电梯到达某一层开门时, 由于阻力等原因在设定时间内没有开门到位时, 电梯会进入开门保护状态, 在本层尝试开门三次还不成功后, 则运行到下一层开门; 当电梯关门过程中遇到阻力等原因在设定时间内没有关门到位时, 电梯进入关门保护状态, 不响应呼梯指令 When the elevator reaches a floor layer, the door isn't opened completely in the established time because of obstacle or other reasons, the elevator will enter the open protected mode, after try to open the door unsuccessfully in this layer three times, and runs to the next layer to open the door; When the door isn't closed completely in the established time because of obstacle or other reasons, the elevator will enter the close protected mode, no response to the command for calling
抱闸异常检测功能 Break anomaly detection	当系统发出运行命令时, 检测到抱闸未打开时; 或者系统未发出运行命令, 却检测到抱闸打开信号, 电梯都将保护, 不能运行 Real-time detection system brake arm action state, if different is discovered between the actual state; And control command, the system will state into protection status, the elevator stops running
紧急消防返基站 Emergency fire return to the base landing	大楼发生火灾时, 系统在接收到火警信号后, 将取消所有指令和召唤信号, 驱动电梯直接返回消防层, 开门疏散乘客 When fire broke out in the building, after the system receive the fire alarm, the elevator will cancel all the commands and calling signals, drive the elevator return to the fire-fighting layer, open the door and evacuate the passengers
厅门自学习 Landing door self-learning function	当增加层站时, 必须进行厅门自学习, 确保安全后方可正常运行 When add the layer stop, carry out the landing door self-learning, after make sure the safety, the elevator can operate normally
安全救助功能 Security rescue function	当电梯监测到异常时, 在保证安全的前提下, 进入安全救助运行模式, 发出语音安抚和提示, 并就近楼层停靠开门释放乘客, 释放乘客后根据实际情况智能判断电梯是否可再运行 When the elevator monitors the abnormal, under the premise of ensuring security, it enters into the security rescue operation mode, issues voice message to appease and prompt, and stops at the nearest floor to open the door and release passengers, after which, according to the actual situation after the accident, determines whether the elevator can run again.

Basic function 基本功能

应急功能 Emergency functions

五方对讲 Five sides interphone	轿厢、轿底、轿顶、机房和监控室之间的一个对讲系统 There is an interphone around car, car bottom, car roof, machine room and monitor room
轿厢警铃 Alarm bell	发生紧急情况, 乘客可按动轿内操纵箱上报警按钮, 向外报警 In case of emergency, the alarm bell will be activated by pressing the alarm button in operating panel
机房紧急电动运行 Emergency electric operation in machine room	控制柜内设有机房紧急电动运行装置, 发生紧急情况时, 可由专业人员在机房进行操作 An emergency operation with electric device is installed in machine room, when an emergency happens, the professional maintenance staff operate the device rapidly to rescue operations in the machine room
轿厢内应急照明 Emergency light	轿厢内设有应急照明装置 Emergency light in the car will start whenever there is a power cut

节能功能 Energy-saving features

轿厢照明风扇自动控制 Lighting & Fan control in car	在规定时间内无呼梯信号, 轿厢内照明及风扇会自动关闭以节约能源 The elevator in standby mode, if the lift don't receive any instructions within the preset time, the elevator, automatically shut off the car lighting and fan, in order to save energy
显示节能 Display energy saving	当长时间没有呼梯信号后, 显示屏自动进入节能模式 After a preset timeout without hall call registration, display will turn off for energy saving

人机界面 Man-machine interface

轿厢到站钟 Passing chime in car	当电梯运行到站时, 轿厢到站钟会发出响亮的钟声提醒乘客 When the elevator operates arrive station, the car will remind the passengers with a loud bell
厅外及轿厢方向指示 Hall & Car direction Indicator	在电梯运行时, 在外召和轿内显示都会显示电梯的运行方向 Both car and hall screen will display the elevator running direction
轿内、厅外显示 Car & Hall screen	操纵箱和外召显示配备显示器, 显示楼层及电梯运行方向等信息 The indicator in the car operation panel or in the hall call panel will display the elevator floor position and running direction by arrow signals
个性化楼层显示设置 Creative floor display	可以根据客户的需求, 设置不同的楼层显示信息, 该信息可设数字0-9, 字母A-Z或者任意两个字符的组合, 也可设置以1开头的3位显示如13A等。仅限TFT、EOD显示器。注: 段码显示器不能区分数字0与字母O, 数字5与字母S。 The elevator can be based on customer demand, you can set a different floor display information, this information can be a combination of letters numbers 0-9, A-Z or any of the two characters, but also can be set to 1 at the beginning of the 3 shows such as 13A etc. TFT, EOD display only. Note: segment display can not distinguish the number 0 and the letter O, the letter S and number 5.
轿内消防状态提醒显示 Fire state show inside the car	当发生火灾时, 通过轿内显示, 提醒乘客退出电梯、不要乘坐电梯 When fire broke out by means of show on the inside of car, remind the passenger to leave the elevator, don't take the elevator
按钮微亮 luminous button	轿厢内指令按钮未登记时微亮(约全亮的10%), 登记指令后全亮。电梯按钮清晰明亮, 仅限BR36D和BS34D按钮。 When the command buttons in the car are not registered, keep Shimmery(account for 10 percent of total bright), after finish the command, the light will be bright totally, the buttons of elevator are vivid and bright, BR36D and BS34D buttons only.

智能 Intelligence

通讯自动监测保护 Communication automatic monitoring protection	实时监测控制系统和轿内通讯状态, 当检测到轿内通讯中断后, 在电梯允许开门的情况下自动开门, 并发出语音安抚, 提示乘客离开轿厢 Real-time monitoring of the communication status and control system and the car, when detecting communication outage within the car, automatically opens the door if the elevator allows to open the door, and issues voice message to appease and remind passengers to leave the car
层站召唤智能登记 Landing call intelligent registration	群控模式下, 当一台电梯未能接走所有等待的乘客, 该层站按钮将自动再登记并保持呼梯状态, 系统将自动派遣另一台电梯来服务 In the group control mode, when an elevator fails to pick up all the passengers waiting, the landing button will automatically re-register and keep the call state, and the system will automatically send another elevator to serve
开门保持时间智能调节 Door opening time intelligent adjustment	电梯系统根据层站出入口人流情况, 以及按照轿内指令、厅外指令的不同自动对开门保持时间进行自动调整。 The elevator system automatically adjusts the opening time of the door according to the different flow of the entrance and exit of the landing station and according to the car instructions and the hall instructions.
控制系统温度监测 Control system temperature monitoring	实时监测控制系统温度情况, 在检测出有过温趋势时, 提前转入安全救助模式运行, 防止停梯困人 Real-time monitoring of the temperature of the control system, in the detection of over-temperature trend, transfer into the security rescue mode operation in advance to prevent people from getting stuck
智能舒适运行 Intelligent and comfortable operation	控制系统根据不同目的层间距自动计算最优运行曲线, 使电梯平稳舒适运行 The control system automatically calculates the optimal running curve according to the spacing of different target floors, so that the elevator operates smoothly and comfortably
按钮粘连自动识别 Button sticking automatic identification	控制系统可以自动识别出厅外召唤按钮的粘连或卡住情况, 自动去除该粘连或卡住的召唤指令, 避免电梯由于外召按钮的粘连或卡住情况而无法关门运行。 The control system can automatically identify the sticking or jamming of the hall call buttons, automatically remove the call command stuck or jammed, to avoid the failure of closing the door and operation of the elevator due to the sticking or jamming of the hall call buttons.

特殊运行 Special run

防捣乱保护 Anti- nuisance car call protection	为避免空梯运行, 在一个较短的时间内如同时按下三个及以上按钮, 则会被视为捣乱操作, 同时取消轿厢内所有召唤 In order to avoid empty running, if three or more buttons are pressed in a very short time, it will be regarded as a disruptive operation. Meanwhile, all calls in the car will be canceled.
自动泊梯 Parking	电梯将运算不同的楼层信息, 并控制各台电梯自动泊梯在不同楼层, 提高效率 Elevators in a same group will park on different floors once spare in order to shorten the response time
厅外呼梯切除开关 Hall call cancel	主板上设置开关, 只需通过拨码, 就可以取消外呼指令, 方便调试、检修等专业人员操作 If personnel want to adjust and maintain elevator, they could dial up on the button of main panel to cancel outside call
静态定位功能 Statics location function	电梯安装时, 无需将钢带从主机上脱开, 进行主机角度定位, 方便工地安装 When the elevator is installed, without take the steel belt away from the main machine, Host angle positioning, convenient to install for worksite.
轿顶检修 Top of car inspection	轿顶设置检修开关, 可以方便检修人员, 在井道内进行检修等操作, 此时, 机房检修开关无效 Set up the repair switch in the top of car, convenient for maintainer, When the maintainers are repairing or other operations in the wellhole, the repair switch is invalid at this time
静音模式 Silent mode	针对酒店、公寓等场所设计, 可以在特定的时间段(例如夜晚), 自动关闭到站钟等发生装置的声音, 为楼宇住户提供安静的休息空间; 其他时间段, 到站钟等发生装置自动恢复声音, 为电梯使用者提供声音提醒 At the hotel, apartments and other places, in a specific period of time (e.g. night), automatically close the station clock generator sound, keep rest space building tenants quiet; at other times, the station clock generator automatically restores the voice, for the elevator to provide voice reminder
语音安抚 Pacifying Voice	电梯处于特殊状态时语音安抚乘客情绪 When the elevator locates in the specific position, the voice will comfort passengers' feeling
斜线撤电流 Skew-line interrupt the electric current	电梯在停止时, 驱动器撤销电流成斜线方式, 提高电梯停止舒适感 When meet the elevator stop operating, the drive interrupt the electric current, become a mode of skew-line, improve the comfort level of elevator lay off



检修零速停车 Repair zero speed stop	检修运行时，零速停车。提高主机抱闸的运行寿命 Under the repair,elevator stop operating with zero speed,increase the service life of main machine braking
免调试功能 Adjust-free function	通过控制板上的拨码与检修开关组合，自动运行后完成调试 By the toggle and repire switch in control plate,after the elevator operating automaticly,complete the debug

— 钢带保护功能 Steel belt protection features

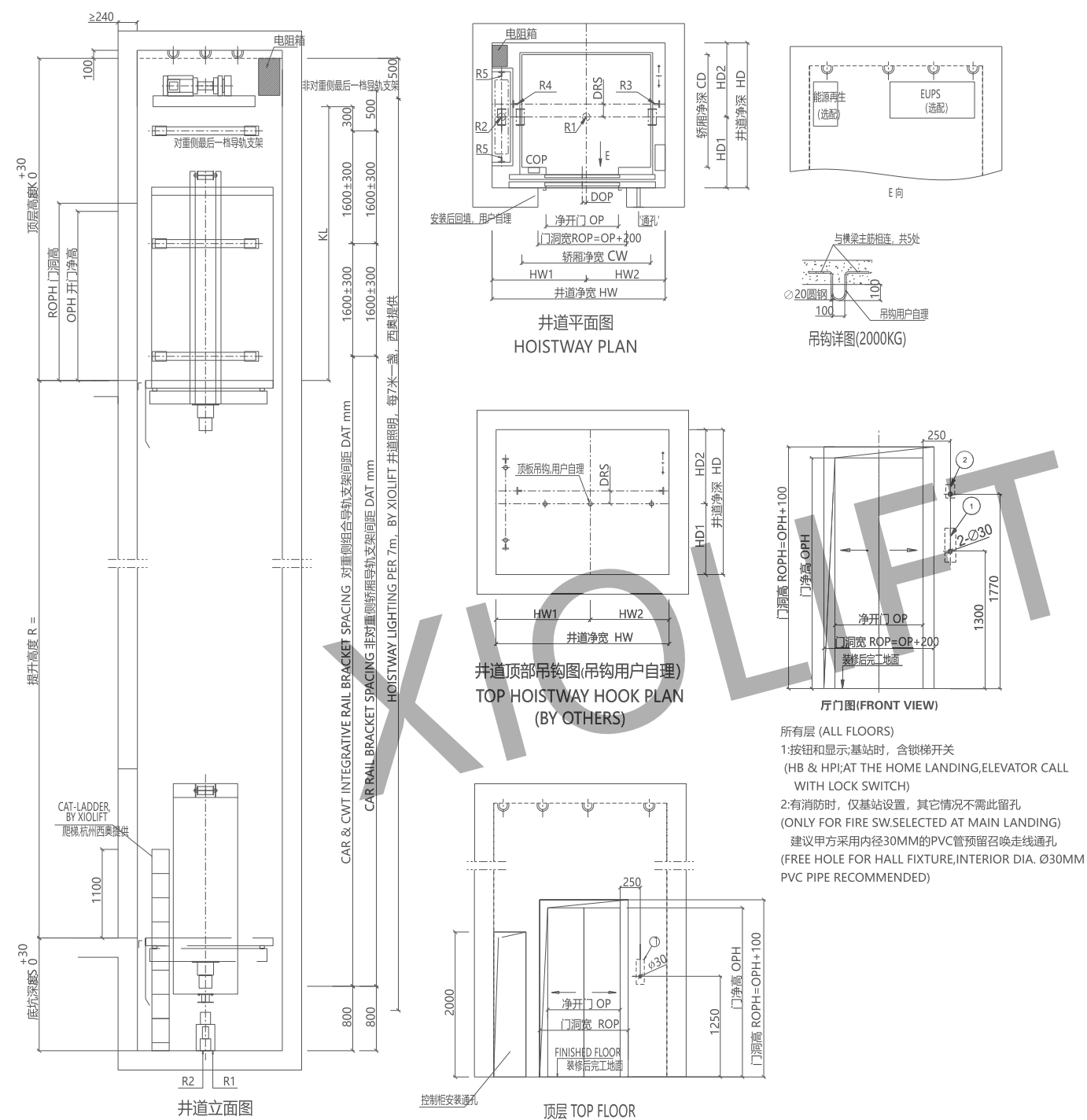
钢带寿命保护 (标配) Steel belt life protection (standard)	记录并存储钢带的寿命，当钢带的使用寿命达到设定值，电梯进入保护状态 Record and store the service life of the steel belt. When it reaches the set value, the elevator will enter the protection state
钢带折弯次数保护 (标配) Steel belt bending times protection (standard)	计算任意一段钢带的折弯次数，当任意一段钢带的最大折弯次数达到设定值，电梯进入保护状态 Calculate the bending times of any section of steel strip. When the maximum bending times reaches the set value, the elevator will enter the protection state
钢带滞留检测功能 (标配) Steel belt retention detection function (standard)	通过检测装置监测轿厢是否发生滞留，当出现滞留时，电梯进入保护状态 The detection device monitors whether the car is detained. If so, the elevator will enter the protection state
钢带断带检测功能 (选配) Steel belt breaking detction function (optional)	通过检测装置监测钢带是否断裂，当钢带出现断裂时，电梯进入保护状态 The detection device monitors whether the steel belt is broken. If so, the elevator will enter the protection state
钢带磨损检测功能 (选配) Steel belt abrasion detction function (optional)	通过检测装置监测钢带是否磨损，当钢带磨损达到一定程度时，电梯进入保护状态 The detection device monitors whether the steel belt is abrasion. If so, the elevator will enter the protection state
钢带张力保护 (选配) Steel belt tension protection (optional)	通过检测装置监测钢带的涨紧力，当涨紧力超过一定值后，电梯进入保护状态，直至涨紧力恢复 The tension force of the steel strip is monitored by the detection device. When it exceeds a certain value, the elevator will enter the protection state until the tension force is restored

Optional function 可选功能

开门待机 Door open standby	改变普通电梯的关门待机功能，通过设置参数使其开门待机，保持电梯内空气流通 Change the door close standby function in usual elevator ,by set up the parameters to make the eaevator open the door and standby,maintain the air to circulate
司机直驶 Attendant non-stop	当司机开关动作时，由司机按下司机直驶开关，可旁路所有的外召，待关闭直驶开关后，再响应外召指令 Press the non-stop bottom, elevator will move straightly to instruction floor
开门保持按钮 Door hold button	轿厢内配置开门保持开关，此开关动作时，电梯不关门，在设定的保持开门时间内，电梯不关门，超过等待时间后，自动关门。 开门等待过程中，按下关门按钮，可取消开门保持等待，立刻关门 The cabin is configurated the opening-keeper .when the switch action, the elevator is not closed, in the setting of the hold open time, the elevator is not closed, more than waiting time, automatic door.Open the door waiting for the process, press the close button, the door can be closed immediately cancel keep waiting
并联/群控功能 Duplex/Group control	当有两台电梯时可选择并联功能，三台电梯时可选择群控功能。并联或者群控时，系统根据优先级排序，派最快的可达到的电梯，服务外呼指令，减少乘客等待时间。 Two elevators could choose duplex control, three elevators could choose group control. In duplex or group control, the system will dispatch the fastest accessible elevator according to the priority order, serve the outbound call instruction, shorten the system response.
语音报站 Voice ring	配备语音报站装置，可准确告诉乘客电梯的当前停靠楼层、门的状态等信息 The elevator is equipped with voice broadcast device,tells the passangers the layer that elevator is stopping,the state of door and other informations

厅外到站钟 Hall chime	一般在外召显示器上集成厅外到站钟，给乘客以提示 General in the call and display integrated Hall station clock, for passengers to prompt
紧急消防员服务 Emergency fireman service	当轿厢内预设的钥匙开关被启动时，电梯取消所有召唤信号，电梯只能应答轿内指令，配合消防员灭火，此功能需配合消防电梯使用 When the key switch that be preinstalled in car is started,the elevator cancel all the call signaling,respond the signal from inside of car only,coordinate with fireman to put out the fires,this function need to coordinate with the fire elevator
消防迫降成功反馈 Fireman landing success feedback	选配消防功能时，系统可提供无源的开关触点，反馈消防迫降的成功信号给小区的消防系统 Isolation button touch could feedback fireman landing success signal to area fireman system
停电自动应急疏散功能 Automatic rescue device	当选配该装置时，电梯停电时，可自动切换到应急救援状态，就近楼层停靠，开门放人，运行过程中有语音安抚 This device is used for rescue operation in case of power shutdown, it is powered by a rechargeable battery, when a sudden power cut happens, a sound signal will comfort the trapped passengers, then the car will move towards to the near floor, keep the door open to the passengers
反向指令不登记 Reverse order cannot register	在向上或向下运行时，对于与当前运行方向相反的指令不能登记 Under the operate upward and downward,the command that reversal of the direction of operate cannot be registered
小区监测系统 Area elevator system	小区监测系统是由微机在小区范围内实现对电梯进行全面监测的智能化管理系统，可为大楼智能管理提供数据 (BA) Computers carry out district monitor system. This function can provide computed monitoring for all the elevators in this district and offer the BA for the computed management of the building
楼宇电梯监视接口 Building elevator supervisory interface	电梯可以为用户的大楼智能管理系统提供离散型电梯运行状态信号，主要信号为：运行方向、楼层信息、安全信息等 The elevator provide the discrete type running state singals for the building intelligent management system,main singals : running direction、floor information、safety information
远程监控功能 (杭州地区必选) Remote supervisory function (essential for HangZhou)	可通过互联网实现远程监测中心对用户电梯的24小时全程监护，电梯发生故障或关人时，会自动实时向中心报警 By the internet to achieve the remote monitoring center 24 hours whole-course ward for users,when the elevator operate wrongly , elevator can give an real-time alarm to the center
视频电缆接口预留 (含视频电缆) Reserve the vision cable interfaces (include vision cable)	为电梯轿厢内安装视频监控预留电缆接口 (含视频电缆) Cable interfaces are reserved for the installation of video monitor .(include vision cable)
提前开门功能 Advanced door opening	启用该功能，可使电梯在进入门区时，电梯速度降到设定值时开门，提高运行效率 (≥2.0m/s时，该功能为基本功能) Start the function,it can make the elevator speed slow down to the set-value and open the door when the elevator enters the area of door,improve the operating efficiency(when speed ≥2.0m/s,the function is basic function
会议优先模式 Conference priority mode	群控模式下，如果某一层由于会议结束或其他情况而产生大客流现象，可以通过专用开关手动触发或传感器自动触发进入此模式，此时其他电梯将会自动到此层服务。 In the group control mode, if there is a large passenger flow in a certain floor due to the closing of a meeting, this mode can be manually triggered by a dedicated switch or by automatic triggering of the sensor, then the other elevators will automatically come to this floor to serve.
IC卡功能 IC card	用户IC卡刷卡后，自动登记楼层指令，或开放相应楼层登记权限，允许乘客手动登记指令 After swiping the IC card, automatically register the floor instruction, or open the corresponding floor registration authority to allow passengers to manually register the instruction
到站按钮提醒 Arrival button pre-remind	根据自动计算的最优曲线，提前预告电梯下一个停靠楼层，其对应楼层按钮闪烁 According to the optimal curve automatically calculated, pre-remind the next landing floor of the elevator, and the corresponding floor button flashes
VIP优先服务 VIP priority service	当某层VIP乘客希望电梯能立即或优先到达他们所在的楼层，通过开关进入此状态，系统将自动派遣一台电梯相应优先外呼，此时此台电梯的召唤全部取消，并第一时间到达此层载客，只响应轿内指令而不应答层站服务，此时享有电梯使用的优先权。 When VIP passengers want the elevator to arrive at their floor immediately of preferentially, after enter this state through the switch, the system will send an elevator to respond to the priority to the instructions in the car instead of responding to the service of the floor station. At this time, they have the priority of using the elevator.
自动再平层 Auto re-leveling	当电梯开门时,由于人员的进入,钢丝绳的伸缩导致电梯平层位置发生变化.此时电梯会以缓慢的速度,自动纠正平层位置. R≥30m或V≥2.0m/s时,该功能为基本功能 When the elevator door opening, because the personnel to enter, telescopic wire rope leads to elevator leveling position changes, the elevator will be at a slow speed, automatic correcting flat layer position. R≥30m or ≥2.0m/s, this function as basic function

XO-GME III 钢带无机房客梯
teel belt inorganic tenant ladder



注：此图不按比例，除非另有规定。 Note: do not scale this drawing, unless otherwise stated.

◎ 业主和土建承包商应完成的工作

- 井道内一切建筑必须达到防火要求，不得装设与电梯无关设备、电源等及无关孔洞。
- 井道必须垂直，井道水平尺寸为最小净空尺寸，且垂直误差0~+25mm/0~30m、0~+30mm/30m~60m、0~+50mm/60m以上。
- 当底坑底面下有人能达到的空间存在，则对重缓冲器安装在一直延伸到坚固地实心桩墩上，或安装在对重安全钳，并增大井道净尺寸，具体事宜向电梯厂家询问。
- 电梯安装之前，所有层门洞必须设有高度不小于1.2米的安全防护围封，并确保有足够的强度。
- 封闭式井道根据需要设通风孔（一般在井道顶部和底部），其面积不得小于井道水平面积的1%，通风孔需设防护网。
- 电梯厅门、呼梯显示预留洞及其他预留孔洞在电梯安装完毕时需进行回填装修。
- 电梯井道最好为混凝土结构。如果井道为框架结构，在导轨支架安装处应设置300mm高的混凝土圈梁，并在每层厅门洞洞上沿和下沿均设300mm高与井道同宽的混凝土梁。如果井道为实心承重砖墙结构，应在每层厅门洞洞上沿和下沿均设300mm高与井道同宽的混凝土梁。
- 当井道为满足导轨支架的安装需要增加辅助混凝土圈梁结构，要求其混凝土强度至少应达到C20等级。
- 当两相邻层门地坎间距超过11米时，其间应设置一不得向井道内开启的安全门，安全门的尺寸不得小于350mm宽1800mm高。
- 底坑内应防水，若有积水坑，应设在墙角处。
- 根据技术参数表中的要求，把电源拉到机房并设带保护的开关且上锁，电源波动范围不应超过±7%。电源零线和接地线应分开，且接地电阻值不大于4Ω。
- 图中标明的所有载荷，井道墙和底坑的强度必需能承受各力。
- 图中标明的用户自理（预埋钢板、吊钩等），需预先设置。
- 机房中的温度应保持在5~40℃，机房应平整且必须能承受不小于7.0KN每平方米的楼面标准值均布活荷载。当机房地面高度不一且相差大于500mm时，应设置楼梯或台阶，并设置护栏。
- 用户需设立救援值班室，并每台铺设通往机房的一根6芯电缆（推荐使用屏蔽/两两双绞线，每芯至少0.5平方毫米，或用五类线替代）。
- 钢带电梯的机器空间和井道应具有小于2%透射比的防护措施，如钢化夹胶玻璃或玻璃贴膜。注：紫外线透射比的测试方法参照JC/T 2393-2017标准执行。

◎ Done by owner or builder

- The hoistway should be exclusively used for the lift. It shouldn't contain cables or devices etc. other than for the lift. Hoistway and all parts attached to it should meet the requirements for the fire protection.
- The well should be vertical. The minimum clearance dimensions is the dimension of the well. And the error is above 0~+25mm/0~30m、0~+30mm/30m~60m、0~+50mm/60m.
- If accessible spaces do exist below the car and the counterweight working stroke should be placed on solid pile pier or install a counterweight safety.
- Safety protection barrier with enough strength should with enough height is not less than 1.2m should be placed in front of all entrance of hoistway before lift installation.
- Enclosed hoistway should be provided with performed ventilation opening in the upper or lower hoistway, and the ventilation opening should be at least 1% of the available hoistway area.
- The reserved hole for landing door, hall call units etc. should be filled in after installation.
- We prefer concrete hoistway. If you adopt brick structure, concrete beam of 300mm in height should be made in the hoistway wall where the guide brackets will be fixed in. Meanwhile, there should be concrete girders of 300mm in height with the same width as the hoistway's, locating upper and lower the edge of landing door hole.
- If auxiliary concrete ring beam structure is needed to ensure safety of guide rail installation, the strength of concrete should be at least C20.
- When the distance between adjacent landing doorsills exceeds 11m, emergency exit should be needed which should not be open towards inside of the hoistway. The size should be not less than 350mm width and 1800mm height.
- The pit should be impervious to infiltration of water. If there is a splash, it should be installed in the corner of the pit.
- According to requirement of the technical parameters, the power supply should be placed in the switch box with protection switch and locked off. The fluctuation of the power supply should be less than ±7%. The neutral conductor and the protection conductor should always be separated, and the ground resistance should be no more than 4Ω. If add electricity leakage protection function, the suggested rated residual current should be 500mA.
- All the force marked in the drawing has included the impact factor except special notes. The hoistway wall and pit strength should bear the force marked.
- The matter (bearing plate etc.) prepared by users shown in the layout should be pre-embedded.
- The temperature in the machine room should be maintained between 5~40°C. Machine room floor should be approximately level and withstand average load of 7.0KN per square meter. When the machine room floor is not flat, the higher and lower level varies over 500mm; step or ladder and barrier should be set.
- Users should establish security room. Each lift should be provided with 6-wiring shield cable used as interphone cable (each wiring is not less than 0.5mm²). CAT-5 cable is acceptable if the above cable is not available.
- The machine space and hoistway of steel belt elevator should have preventive measures to keep UV transmittancy lower than 2%, such as toughened laminated glass or glass film. Note: Test method of UV transmittancy is given in JC/T 2393-2017.

重量 (kg)	速度 (m/s)	轿厢净尺寸 宽CW x 深CD (mm)	开门净尺寸 宽OP x 高OPH (mm)	井道净尺寸 宽HW x 深HD (mm)	HW1 (mm)	HW2 (mm)	HD1 (mm)	HD2 (mm)	底坑深度 S (mm)	顶层高度 K (mm)	其它定位 尺寸 (mm)			导轨及底坑支反力 (KN)					最大层站数 (层)	最大提升高度 (m)
											DRS (mm)	DOP (mm)	DAT (mm)	R1	R2	R3	R4	R5		
400	1.0	1000X1100	700X2100	1600X1500	895	705	730	770	1300	3800	160	50	2500	50	42	23	23	17	16	50
550	1.0	1000X1400	700X2100	1600X1800	895	705	880	920	1300	3800	160	50	2500	64	53	26	26	18	16	50
630	1.0	1100X1400	700X2100	1750X1800	945	755	880	920	1300	3800	160	0	2500	68	55	27	27	19	16	50
	1.0									3800				73	59	28	30	20	16	50
680	1.5	1200X1400	800X2100	1900X1800	995	855	880	920	1300	3900	0	0	2500	73	59	33	35	25	24	75
	1.75									3950				73	59	35	37	27	32	90
	1.0									3800				86	70	32	33	22	16	50
800	1.5	1350X1400	800X2100	2000X1800	1070	880	880	920	1300	3900	0	0	2500	86	70	36	38	26	24	75
	1.75									3950				86	70	39	40	29	32	90
	1.0									3800				92	74	33	35	23	16	50
900	1.5	1450X1400	800X2100	2050X1800	1120	930	880	920	1300	3900	0	0	2500	92	74	37	39	27	24	75
	1.75									3950				92	74	40	42	29	32	90
	1.0									3800				98	78	35	36	23	16	50
1000	1.5	1600X1400	900X2100	2200X1800	1195	1005	880	920	1300	3900	0	0	2500	98	78	39	40	28	24	75
	1.75									3950				98	78	42	43	30	32	90
	1.0									3800				98	78	35	36	23	16	50
	1.5	1100X2100	900X2100	2100X2500	1050	1050	1230	1270	1300	3900	0	0	2500	98	78	39	40	28	24	75
	1.75									3950				98	78	42	43	30	32	90
	1.0									1400	4050			112	89	54	57	30	16	50
1150	1.5	1900X1400	1100X2100	2550X1800	1350	1200	880	920	1500	4200	0	0	2000	112	89	66	68	36	24	75
	1.75									1550	4250			112	89	72	75	40	32	90
	1.0									1400	4050			126	99	58	60	31	16	50
1350	1.5	2000X1550	1100X2100	2700X1950	1450	1250	955	995	1500	4200	0	0	2000	126	99	69	71	37	24	75
	1.75									1550	4250			126	99	76	78	41	32	90
	1.0									1400	4050			140	108	61	63	33	16	50
1600	1.5	2000X1750	1100X2100	2700X2150	1450	1250	1055	1095	1500	4200	0	0	2000	140	108	73	74	39	24	75
	1.75									1550	4250			140	108	79	81	43	32	90